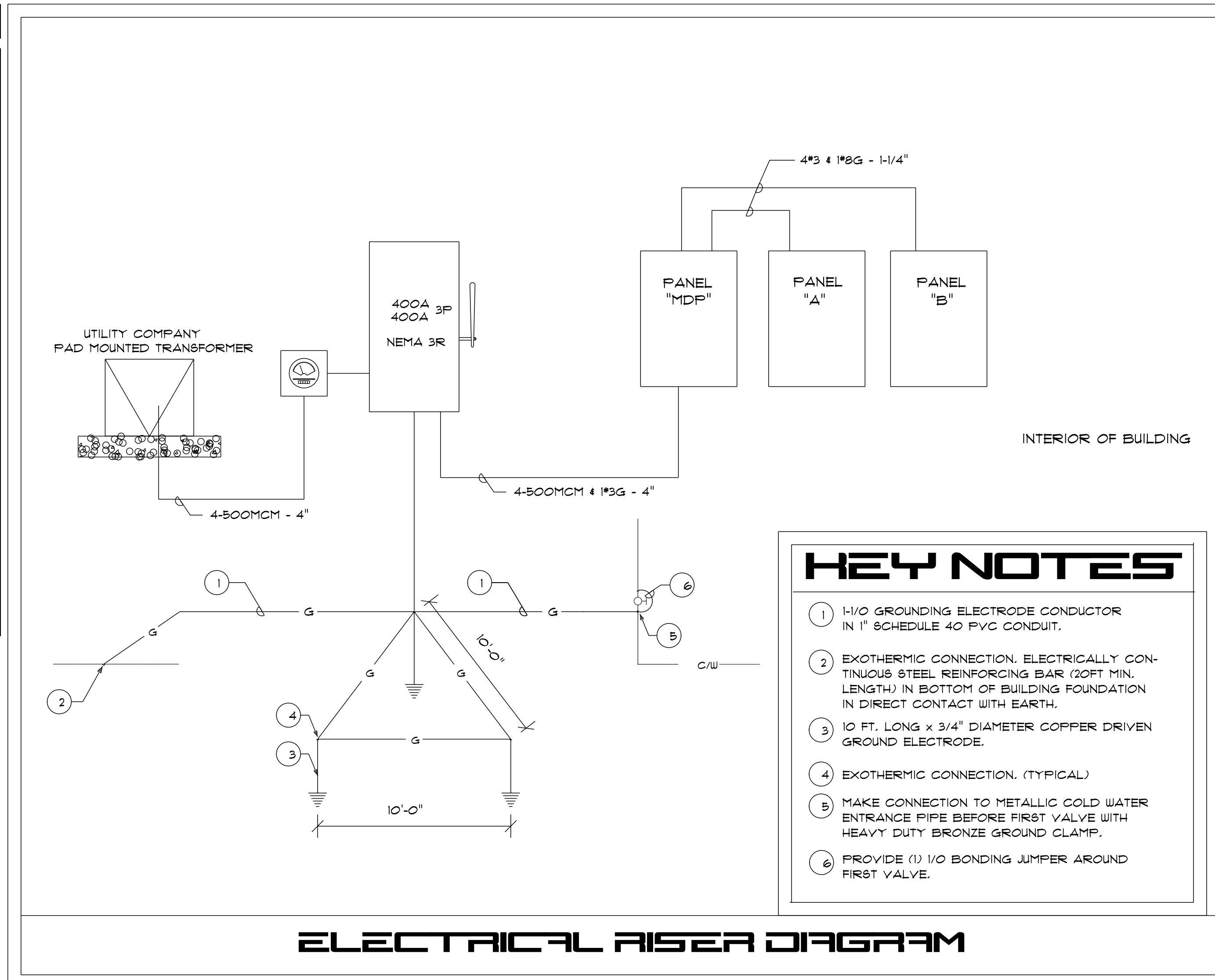


SCHEDULE OF BRANCH CIRCUIT PANEL "A"														
MAIN: 100 AMP / 2 POLE MAIN CIRCUIT BREAKER					VOLTAGE: 120/240V, (3) #1 AND (1) #6									
SPEC: SQUARE D TYPE "QO"					AIC SYM: 10,000 AIC RATED									
MOUNTING: FLUSH														
DESCRIPTION	WIRE	GRND.	COND.	TRIP	CKT.	A PHASE W	B PHASE W	CTK.	TRIP	COND.	GRND.	WIRE	DESCRIPTION	
DINING RECEPTACLES	#12	#12	1/2"	20	1	2000	1500	2	20	1/2"	#12	#12	SERVER PREP RECEPTACLES	
CASHIER RECEPTACLES	#12	#12	1/2"	20	3	1200	2000	4	20	1/2"	#12	#12	ICE MACHINE	
COMMERCIAL REF	#12	#12	1/2"	20	5	2200	800	6	20	1/2"	#12	#12	RESTROOM RECEPTACLES	
KITCHEN RECEPTACLES	#12	#12	1/2"	20	7	1500	1200	8	20	1/2"	#12	#12	KITCHEN RECEPTACLES	
EXTERIOR RECEPTACLES (WP)	#12	#12	1/2"	20	9	1200	1800	10	20	1/2"	#12	#12	EXTERIOR RECEPTACLES (WP)	
ENTRY LIGHTING	#12	#12	1/2"	20	11	400	400	12	20	1/2"	#12	#12	FOYER LIGHTING	
SIGNAGE LIGHTING (FUTURE)	#12	#12	1/2"	20	13	1200	1200	14	20	1/2"	#12	#12	DINING LIGHTING	
DINING LIGHTING	#12	#12	1/2"	20	15	1000	800	16	20	1/2"	#12	#12	SERVER PREP LIGHTING	
BR HALL/MENS RR LIGHTING	#12	#12	1/2"	20	17	1500	1200	18	20	1/2"	#12	#12	WOMENS RR LIGHTING	
KITCHEN LIGHTING	#12	#12	1/2"	20	19	800	1500	20	20	1/2"	#12	#12	EXTERIOR LIGHTING	
SECURITY LIGHTING	#12	#12	1/2"	20	21	400	1500	22	20	1/2"	#12	#12	EMERGENCY LIGHTING	
SPARE					23			24					SPARE	
SPARE					25			26					SPARE	
SPARE					27			28					SPARE	
SPARE					29			30					SPARE	
SUB "A" PHASE						13,400	SUB "B" PHASE							
TOTAL DEMAND:						27,300 W								
FIRST 10,000 @ 100%:						10,000 W								
REMAINDER @ 40%:						6,920 W								
TOTAL DEMAND:						16,920 W								
TOTAL NON-DEMAND:						0 W								
TOTAL LOAD:						16,920 W								
TOTAL LOAD/240 V =						71	AMPS REQUIRED		100 AMPS PROVIDED					

SCHEDULE OF BRANCH CIRCUIT PANEL "B"														
MAIN: 100 AMP / 2 POLE MAIN CIRCUIT BREAKER					VOLTAGE: 120/240V, (3) #1 AND (1) #6									
SPEC: SQUARE D TYPE "QO"					AIC SYM: 10,000 AIC RATED									
MOUNTING: FLUSH														
DESCRIPTION	WIRE	GRND.	COND.	TRIP	CKT.	A PHASE W	B PHASE W	CTK.	TRIP	COND.	GRND.	WIRE	DESCRIPTION	
RECEPTION RECEPTACLES	#12	#12	1/2"	20	1	1500	1500	2	20	1/2"	#12	#12	OFFICE #1 RECEPTACLES	
OFFICE #2 RECEPTACLES	#12	#12	1/2"	20	3	1200	2000	4	20	1/2"	#12	#12	CONFERENCE RECEPTACLES	
OFFICE #3 RECEPTACLES	#12	#12	1/2"	20	5	1500	1800	6	20	1/2"	#12	#12	OFFICE #4 RECEPTACLES	
EXTERIOR LIGHTING	#12	#12	1/2"	20	7	800	1400	8	20	1/2"	#12	#12	RECEPTION LIGHTING	
OFFICE #1 LIGHTING	#12	#12	1/2"	20	9	800	800	10	20	1/2"	#12	#12	OFFICE #2 LIGHTING	
GENERAL LIGHTING	#12	#12	1/2"	20	11	1800	800	12	20	1/2"	#12	#12	OFFICE #3 LIGHTING	
OFFICE #4 LIGHTING	#12	#12	1/2"	20	13	800	2000	14	20	1/2"	#12	#12	POINT OF USE WH	
SPARE					15			16					SPARE	
SPARE					17			18					SPARE	
SPARE					19			20					SPARE	
SPARE					21			22					SPARE	
SPARE					23			24					SPARE	
SPARE					25			26					SPARE	
SPARE					27			28					SPARE	
SPARE					29			30					SPARE	
SUB "A" PHASE						8,400	SUB "B" PHASE							
TOTAL DEMAND:						18,700 W								
FIRST 10,000 @ 100%:						10,000 W								
REMAINDER @ 40%:						3,480 W								
TOTAL DEMAND:						13,480 W								
TOTAL NON-DEMAND:						0 W								
TOTAL LOAD:						13,480 W								
TOTAL LOAD/240 V =						56	AMPS REQUIRED		100 AMPS PROVIDED					

SCHEDULE OF DISTRIBUTION PANEL "MDP"														
MAIN: 400 AMP / 2 POLE MAIN CIRCUIT BREAKER					VOLTAGE: 120/240V, (3) 3/0 AND (1) #4									
SPEC: SQUARE D TYPE "QO"					AIC SYM: 65,000 AIC RATED									
MOUNTING: FLUSH														
DESCRIPTION	WIRE	GRND.	COND.	TRIP	CKT.	A PHASE W	B PHASE W	CTK.	TRIP	COND.	GRND.	WIRE	DESCRIPTION	
MDP-1 (PANEL "A")	3#1	#6	1 1/4"	100	1	24000	24000	2	100	1 1/4"	#6	3#1	MDP-2 (PANEL "B")	
AHU - 1	2#10	#10	3/4"	30	3	4300	5800	4	40	3/4"	#10	2#8	ACU - 1	
AHU - 2	2#10	#10	3/4"	30	5	4300	5800	6	40	3/4"	#10	2#8	ACU - 2	
AHU - 3	2#10	#10	3/4"	30	7	4300	5800	8	40	3/4"	#10	2#8	ACU - 3	
AHU - 4	2#10	#10	3/4"	30	9	4300	5800	10	40	3/4"	#10	2#8	ACU - 4	
EWB	2#10	#10	3/4"	30	11	5000	3000	12	30	3/4"	#10	2#10	ANSUL HOOD	
SUB "A" PHASE						46,200	SUB "B" PHASE							
TOTAL DEMAND:						96,400 W								
FIRST 10,000 @ 100%:						10,000 W								
REMAINDER @ 40%:						34,560 W								
TOTAL DEMAND:						44,560 W								
TOTAL NON-DEMAND:						40,000 W								
TOTAL LOAD:						84,560 W								
TOTAL LOAD/240 V =						352	AMPS REQUIRED		400 AMPS PROVIDED					



WRITTEN DIMENSIONS ON THESE DOCUMENTS SHALL TAKE PRECEDENCE OVER ALL SCALED DIMENSIONS. CONTRACTORS ARE TO VERIFY AND BE RESPONSIBLE FOR ALL DIMENSIONAL SETBACKS & CONDITIONS AT THE JOB SITE. DESIGNER/ENGINEER SHALL BE NOTIFIED OF ANY VARIATIONS IN DIMENSIONS, SETBACKS AND/OR CONDITIONS BEFORE SAID CONSTRUCTION IS AUTHORIZED. SHOP DRAWINGS SHALL BE MARKED "REVIEWED BY THE ENGINEER/DESIGNER" BEFORE FABRICATION OF PARTS IS APPROVED.

ELECTRICAL CERTIFICATION:
PER ANY REVIEW THESE PLANS FOR THE PROPOSED RENOVATIONS ARE IN CONFORMANCE WITH F.B.C. 2010, AND 2011 NATIONAL ELECTRIC CODE (NFPA-70)

BY: _____
CONTRACTOR PRINTED NAME
FLORIDA LICENSE NUMBER _____

SHEET DETAILS

- PANEL SCHEDULES
- RISER DIAGRAM
- KEY NOTES

REVISION DATE:

CLIENT:
MCHARDY INVESTMENTS
432 SE MLK BLVD
STUART, FL 34994
PIN# 04-38-41-013-009-00010-0

PROJECT:
M.C.'S GRILLE & OFFICE

DRAWN
S.M.K.

CHECKED
JK

DATE
April 18, 2014

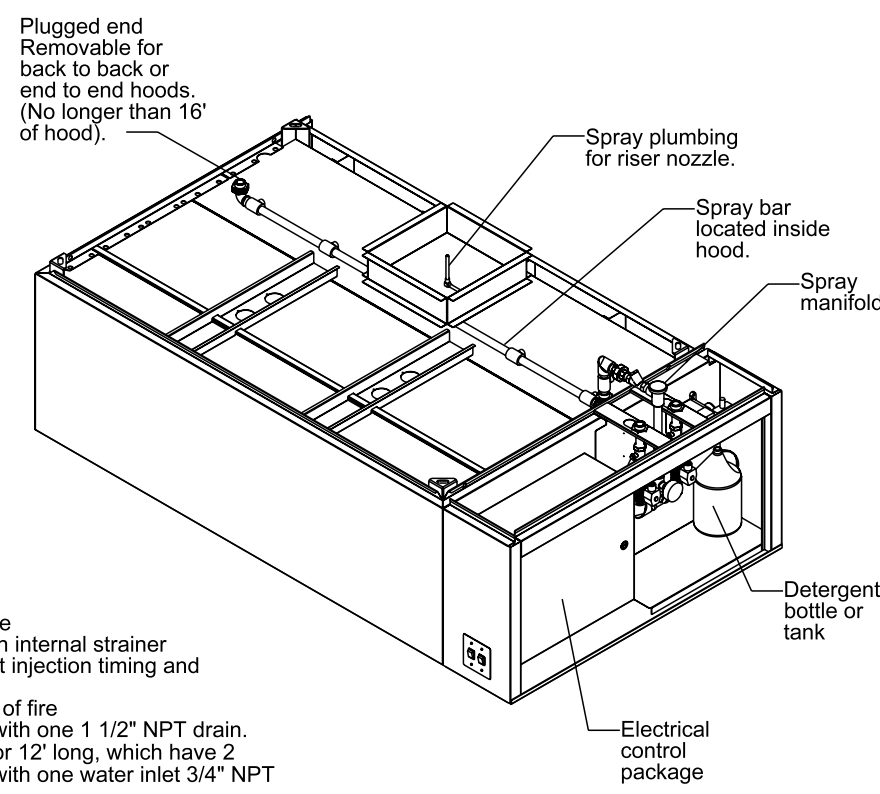
SCALE
AS NOTED

JOB NO.
MCH-2013-48

SHEET
E-2

GENERAL NOTE:

THIS DETAIL HAS BEEN PROVIDED AS REFERENCE. OWNER/CONTRACTOR TO COORDINATE PURCHASE AND INSTALLATION OF HOOD SYSTEM W/ CAPTIVEAIRE REPRESENTATIVE. CAPTIVEAIRE TO SUPPLY SHOP DRAWINGS AND CALCULATIONS TO ENGINEER OF RECORD AND FIRE MARSHALL FOR APPROVAL PRIOR TO PURCHASE AND/OR INSTALLATION OF SYSTEM. CONTRACTOR TO COORDINATE INSTALLATION OF HOOD SYSTEM W/ HVAC CONTRACTOR PRIOR TO PURCHASE FOR PROPER IDENTIFICATION AND INSTALLATION OF REQUIRED VENTING AND OUTSIDE AIR INTAKE REQUIREMENTS.



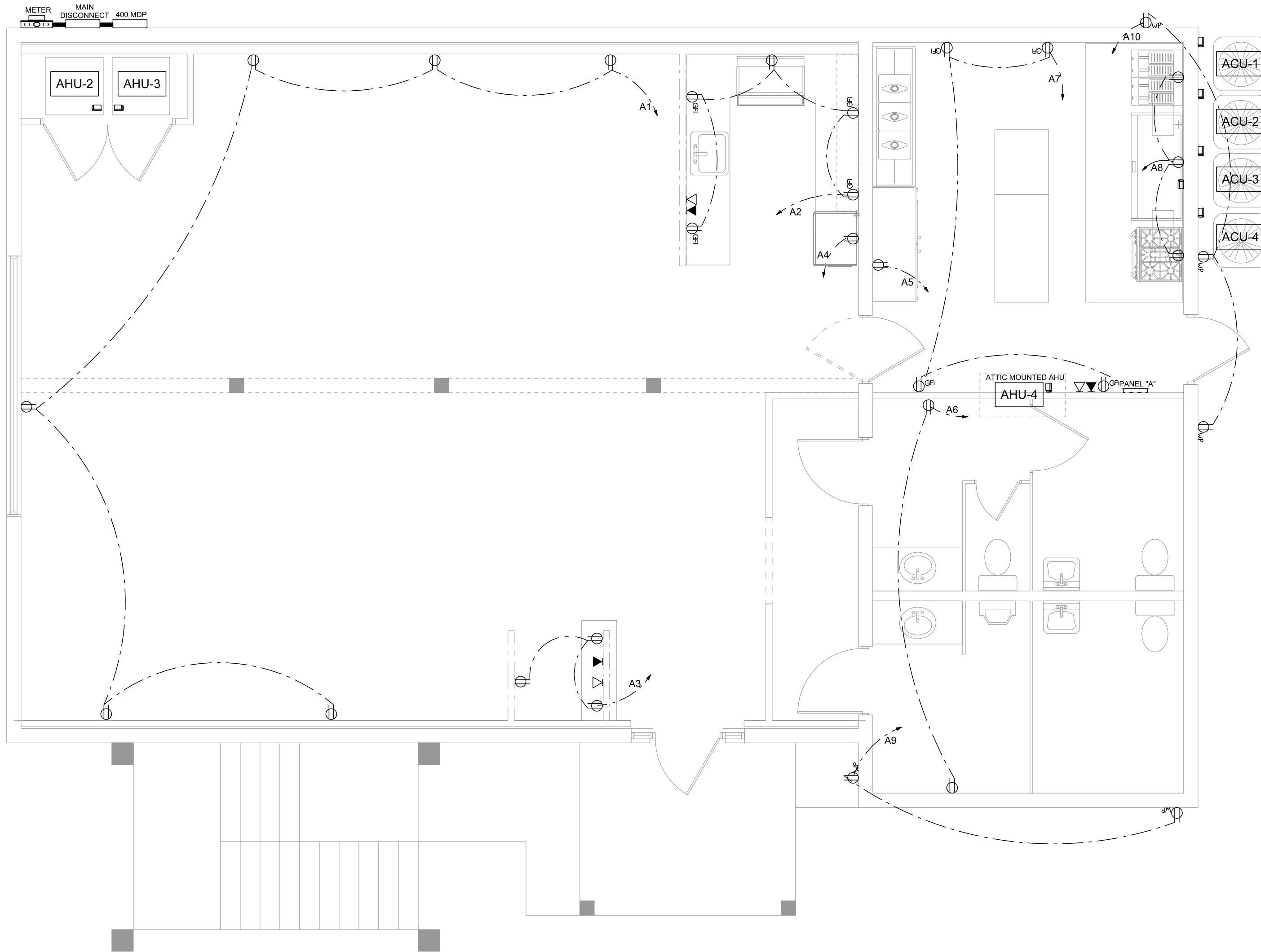
- Features:**
- Easy serviced
 - Automatic operation
 - Backflow prevention
 - Adjustable wash time
 - Dripless nozzles with internal strainer
 - Adjustable detergent injection timing and quantity
 - Auto shutoff in case of fire
 - All hoods standard with one 1 1/2" NPT drain. Except 30" tall and/or 12' long, which have 2
 - All hoods standard with one water inlet 3/4" NPT

Note:
Filters must be installed for proper system operation. Filters can be removed once the system is off.

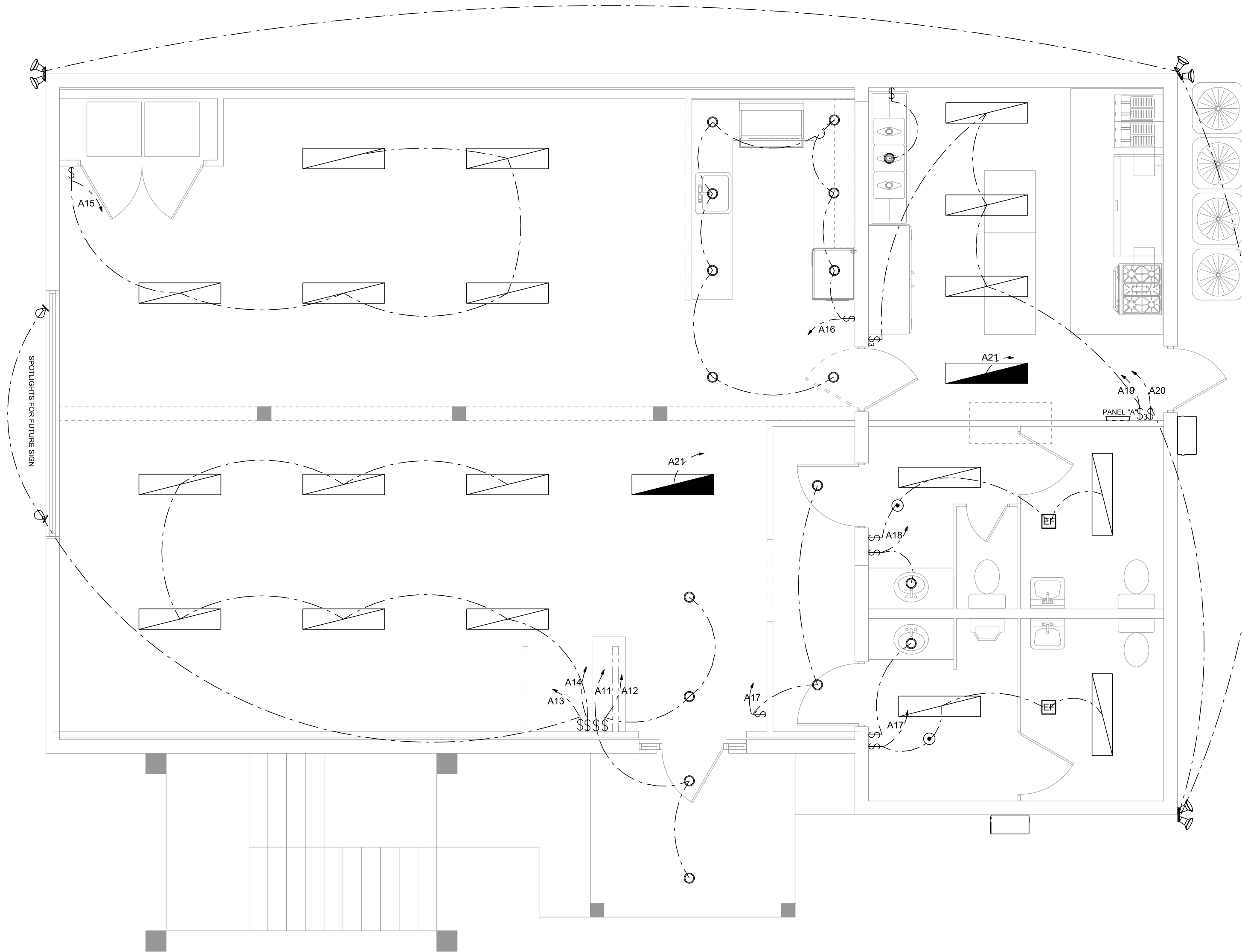
The Fully Integrated Self Cleaning System has the following options.

1. **Hot Water Fully Integrated Self Cleaning System (W1).**
The hot water fully integrated self cleaning system uses the basic manifold with the addition of a detergent pump and timers to control the system. When the fan power switch is turned off, the system sprays and injects detergent into the plenum for cleaning. The length of the wash cycle and detergent injection are adjustable. It is recommended that the wash time be 3 minutes and detergent injection is 1 second every 1 minute.
Water Pressure = 30 to 50 PSI
Water Temp = 140° to 170° F
2. **Cold Water Fully Integrated Self Cleaning System (W2).**
The cold water fully integrated self cleaning system uses the basic manifold without a detergent pump or timers. When the fan switch is turned on, the system begins to spray cold water into the plenum. The spray stops once the fans are turned off. Water pressure regulator is supplied by others.
Water Pressure = 20 to 40 PSI
3. **Hot And Cold Fully Integrated Self Cleaning System (W3).**
The hot and cold fully integrated self cleaning system uses both systems above with one change. It has two water inlets versus the previous systems one. This system combines the functionality of the above systems.

TYPICAL CAPTIVEAIRE HOOD SYSTEM
SCALE: N.T.S.



1ST FLOOR POWER PLAN
SCALE: 1/4" = 1'-0"



1ST FLOOR LIGHTING PLAN
SCALE: 1/4" = 1'-0"

WRITTEN DIMENSIONS ON THESE DOCUMENTS SHALL TAKE PRECEDENCE OVER ALL SCALED DIMENSIONS. CONTRACTORS ARE TO VERIFY AND BE RESPONSIBLE FOR ALL DIMENSIONS, SETBACKS & CONDITIONS AT THE JOB SITE. DIMENSIONS/CONDITIONS SHALL BE NOTIFIED OF ANY VARIATIONS IN DIMENSIONS, SETBACKS AND/OR CONDITIONS BEFORE SAID CONSTRUCTION IS AUTHORIZED. SHOP DRAWINGS SHALL BE MARKED "REVIEWED BY THE ENGINEER/DESIGNER" BEFORE FABRICATION OF PARTS IS APPROVED.

ELECTRICAL CERTIFICATION:
PER ANY REVIEW THESE PLANS FOR THE PROPOSED RENOVATIONS ARE IN CONFORMANCE WITH F.B.C. 2010, AND 2011 NATIONAL ELECTRIC CODE (NFPA-70)

BY: _____ CONTRACTOR PRINTED NAME _____ SIGNATURE _____ FLORIDA LICENSE NUMBER _____

SHEET DETAILS

- 1ST FLOOR POWER PLAN
- 1ST FLOOR LIGHTING PLAN
- CAPTIVEAIRE DETAIL

REVISION DATE:

CLIENT:

MCHARDY INVESTMENTS
432 SE MLK BLVD
STUART, FL 34994
PIN# 04-38-41-015-009-00010-0

PROJECT:

M.C.'S GRILLE & OFFICE

DRAWN

S.M.K.

CHECKED

JK

DATE

April 18, 2014

SCALE

AS NOTED

JOB NO.

MCH-2013-48

SHEET

E-3