

ORION LULA ELEVATOR SPECIFICATIONS	
Load Capacity	1400 lb (635 kg)
Rated Speed	30 fpm (0.15 mps)
Power Supply (circuit by others)	208 Volt, three-phase, 30 Amps, 60 Hz or 240 Volt, single-phase, 40 Amps, 60 Hz
Lighting Supply (circuit by others)	115 Volt, 15 Amps, 60 Hz
Drive System	1/2 cable hydraulic with slack cable safety device 5 1/8" diameter motor Two 3/4" diameter steel aircraft cables Rose wedge sockets
Cab Size	W48" x H54" (1219 mm x 1371 mm) Type 1, 2, 3, 4 W42" x L50" x H54" (1067 mm x 1264 mm x 1371 mm), Type 1, 2, 3, 4 W57" x L54" x H54" (1438 mm x 1380 mm x 1371 mm), Type 1, 2, 3, 4
Cab Panel Finish	Steel panel cab with optional laminates
Maximum Travel	16 inches (457 mm) to 26 feet (7.6 m) ANSI, up to 40 feet residential and CSA
Control System	Automatic user interface; Programmable Logic Controller (PLC)
Noise level (typical installation)	73.2 dBA; measured at a height of 1m, distance of 1m, in front of tank, in closed machine room
Maximum machine room temperature	120 degrees F (49 degrees C); tank generating - 3200 BTU/HR to 6400 BTU/HR
Levels and Openings	Up to 8 stops (maximum 3 landing doors on all cab types)
Pit Depth Required	14 inches (355 mm) minimum up to 96 inches (2438 mm)
Minimum Overhead Clearance	120 inches (3048 mm) for existing construction, 134 inches (3404 mm) for new construction
Hall Station and Control Panel Finish	Rectangular stainless steel (standard) or brass (optional)
Standard Features	8 ft ft. or 16 foot T-rail system Anti-creep device Architectural white coating Automatic cab ON/OFF lighting Car top stop switch and car top (where required) Data plates, capacity tags and rope tags Digital floor and directional indicator Emergency manual lowering; stop key switch and alarm buttons Emergency battery backup for lighting, alarm and emergency lowering Floor specific battery lowering Illuminated cab operating buttons Limited warranty covers the repair or replacement of any defective parts for a period of 36 months from date of shipment. Magnetic floor selection, stopping and re-leveling Manual reset slack rope safety switch Maintenance pit props Pit switch Pit clearance switch Presentation drawings Pump run timer Rail extenders (8" standard or 16 ft optional) Recessed incandescent down lights in stainless steel or brass color Recessed plywood floor Two 12 V, 4 AH, sealed no maintenance batteries with 24 V, 4 Amp Smart Charge™ battery charger Variable speed pressure compensated valve with manual lowering Upper and lower terminal links
Options	2 speed sliding doors for drywall or masonry hoistway finish 2 speed steel doors with infrared clearing sensors in back, architectural white or stainless steel Steel panels with plastic laminate in a variety of colors 90 degree entry/exit cab Automatic cab gate operator and automatic hoistway door operator Automatic hoistway landing to pre-selected floor Brass COP, hall call stations, handrail and recessed down lights sliding car door with electromechanical interlocks, obstruction sensor, and automatic re-open system. Conductor cable for hoistway to pump wiring, 40 ft (12.19 m), 60 ft (18.29 m) or 80 ft (24.38 m) Fire rated manual or automatic swing doors with automatic or manual accordion style cab gates (dependent on applicable code year) Heighter service - phase 1 and 2 (dependent on applicable code year) Flow control, overspeed valve and pipe rupture valve Hands-free telephone Overspeed governor Fire recall service Raised plastic laminated panels in a choice of 7 colors Recessed stainless steel or brass telephone cabinet

The Orion meets the requirements of multiple ASME/ANSI code years for a LULA Elevator. Contact sales for further information.  
Part No. 000682 15-03-2015 Orion Planning Guide

### SPECIFICATIONS FOR PART 5.3 COMPLIANCE

#### PART 1 GENERAL

##### 1.01 SUMMARY

A. The product described herein, manufactured by Savaria is an elevator designed and dimensioned to provide Limited Use/Limited Application (LULA) elevator to suit individual building requirements for use by persons with disabilities.

##### 1.2 REFERENCES

- Elevator shall be designed, manufactured and installed in accordance with the following standards:
  - American National Standards Institute (ANSI).
  - American Society of Mechanical Engineers (ASME).
  - National Electrical Code (NEC) Canadian Electrical Code (CEC)
  - American Society for Testing Materials (ASTM).
  - American Welding Society (AWS).
  - Canadian Welding Bureau (CWB)

##### 1.3 SYSTEM DESCRIPTION

A. 8 hp submersed motor and pump with electronic proportional valve assembly, Programmable logic controller with collective operation, 1/2 roped hydraulic single stage cylinder with line rupture valve.  
 B. Number of Stops: (specify) Two to Four.  
 C. Car Configuration: (specify) straight thru, 90° side end or enter/exit same side.  
 D. Maximum Travel: (specify) Up to 26' (7.62 m)  
 E. Rated Load: (specify) 1400 lbs. (635 kg)  
 F. Rated Speed: 30 fpm (1.5m/s)  
 G. Car Size:  
 1. 48" x 54" (1219 mm x 1372 mm) platform (standard)  
 2. 84" (2134 mm) high ceiling  
 H. Car Walls: (specify) Steel panels (black or architectural white) with (optional) raised plastic laminate panels (contact Savaria for colors).  
 I. Car Ceiling: White panel.  
 J. Car Lighting: Four recessed lights.  
 K. Operating Features:  
 1. Car Operating Panel: (specify) Brushed stainless steel or brushed brass panel with illuminated automatic controls, keyed light switch, emergency stop switch and alarm button.  
 2. Hall Stations: (specify) Brushed stainless steel or brushed brass panel with illuminated automatic controls, keyed light switch, emergency stop switch and alarm button.  
 3. Car Door(s): Fully automatic, side opening, sliding car door with electromechanical interlocks, obstruction sensor, and automatic re-open system.  
 4. Hoistway Doors: 1 1/2 hour fire rated fully automatic side opening, sliding hoistway doors with two side opening panels in steel frame with electromechanical interlocks.  
 5. Handrail: (specify) Stainless steel or brass.  
 6. Pit Switch

##### 1.4 QUALITY ASSURANCE

A. Manufacturer: Provide elevator manufactured by a firm with a minimum of 10 years experience in fabrication of elevators equivalent to those specified.  
 B. All designs, clearances, workmanship and material, unless specifically accepted, shall be in accordance with all codes having legal jurisdiction.  
 C. All load ratings and safety factors shall meet or exceed those specified by all governing agencies with jurisdiction and shall be certified by a professional engineer.  
 D. Elevator shall be subject to applicable state, local and city approval prior to installation and subject to inspection after installation. Determination of and adherence to these regulations is the responsibility of the elevator contractor.  
 E. Welders certified in accordance with requirements of AWS D1.1 or CWB shall perform all welding of all parts.  
 F. Substitutions: No substitutions permitted.

##### 1.5 WARRANTY

A. Warranty: Manufacturer shall warrant component parts of the Orion elevator for a period of 36 months from shipping date. This warranty only applies to products installed and maintained by a Savaria Authorized Dealer in conformance with all applicable local and national codes. The warranty is void if regular inspection and maintenance of product is not being carried out by an Authorized Savaria Dealer in accordance with the recommendations contained in the Owner's Manual. It is the Owner's responsibility to keep records of all such service.

### PART 2 PRODUCT

#### 2.1 MANUFACTURER

Provide the Orion Commercial LULA Elevator manufactured by Savaria.  
 Toll Free Number (800) 861-5112  
 Phone (905) 781-5555  
 Fax (905) 781-2222  
 Web site: http://www.savaria.com

#### 2.2 MATERIAL

- Guide Rail: Dual 8 lbs./ft. machined steel T-rail system.
- Wire Rope: Two 3/8" diameter 7 x 19 ga. IWRC aircraft cables with rope wedge sockets.
- Slip: Structural and formed steel plates with guide shoes.
- Platform Floor: Unfinished plywood flooring.

#### 2.3 FINISHES

A. Components shall be prepared with  
 1) pre-treatment,  
 2) alkaline detergent wash,  
 3) clear water rinse,  
 4) iron phosphate coating,  
 5) clear water rinse and finished with electrostatically applied and baked thermosetting powder coat finish. Standard color is architectural white.

#### 2.4 ELECTRICAL SYSTEMS

A. The electrical contractors shall provide:  
 1. 208V three phase 30 AMP 60 Hz or 230 V single phase 40 AMP 60 Hz source in the machine area with manually operated fused line disconnect.  
 2. 115 VAC, single phase, 15 amp, 60 Hz, single phase power source with manually operated fused line disconnect for car lighting and a light outlet inside the hoistway.  
 3. Telephone circuit in the machine area.

#### PART 3 EXECUTION

##### 3.1 ACCEPTABLE INSTALLERS

A. Installers shall be experienced in performing work of this section who have specialized in work comparable to that required for this project.  
 B. Installers shall be certified and trained by the manufacturer.

##### 3.2 EXAMINATION

A. Use field dimensions and approved manufacturer's shop drawings to examine substrates, supports and other conditions under which this work is to be performed. Do not proceed with work until unsatisfactory conditions are corrected.

##### 3.3 INSTALLATION

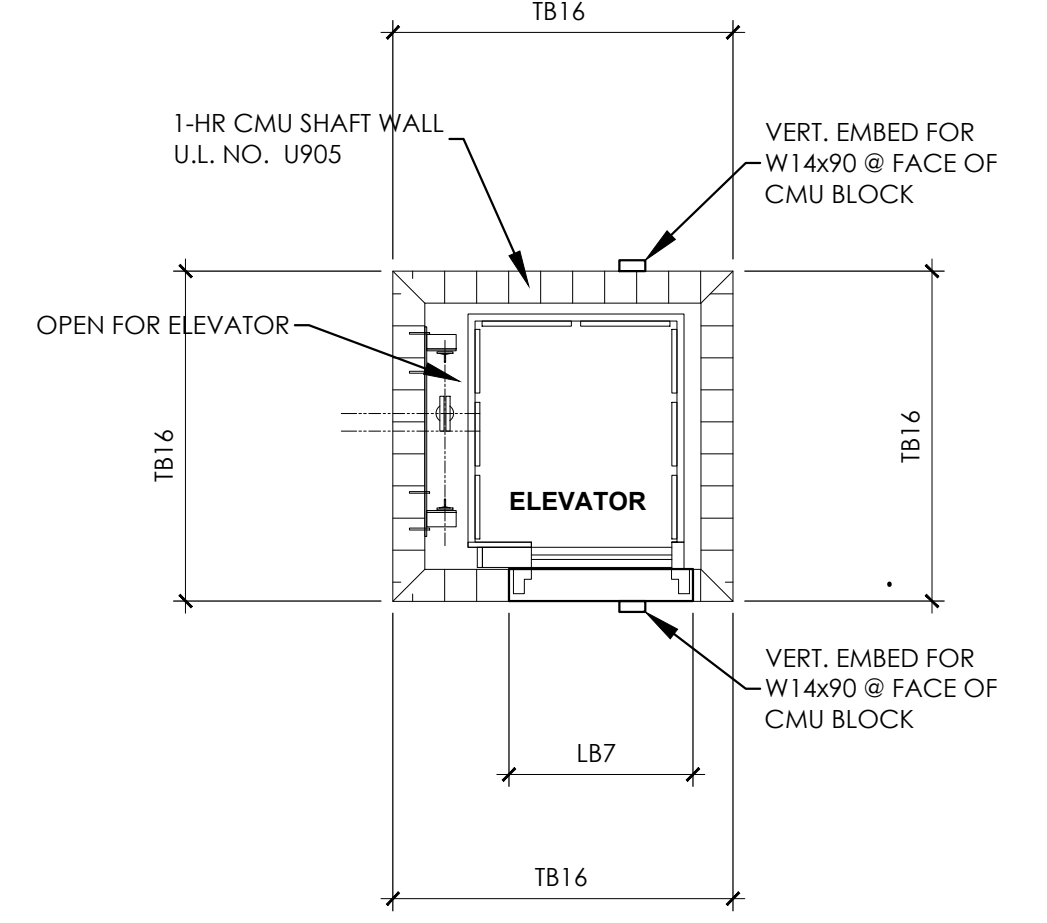
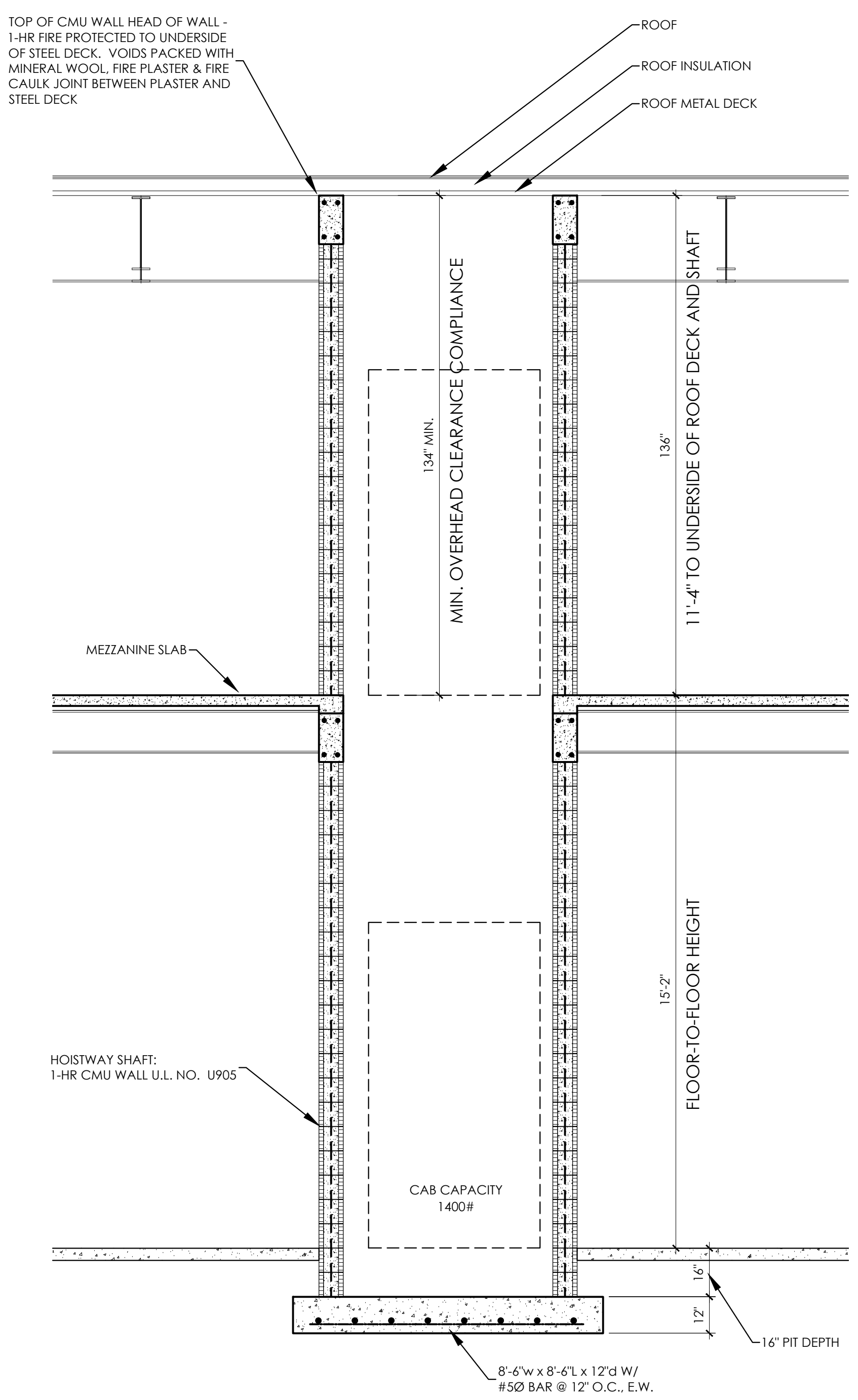
A. The Orion elevator shall be installed in accordance with manufacturer's instructions and as specified and approved by architect.

##### 3.4 DEMONSTRATION

A. The elevator contractor shall make a final check of the elevator's operation with the Owner or Owner's representative present prior to turning the elevator over for use. The elevator contractor shall determine that operating and safety devices are functioning properly.

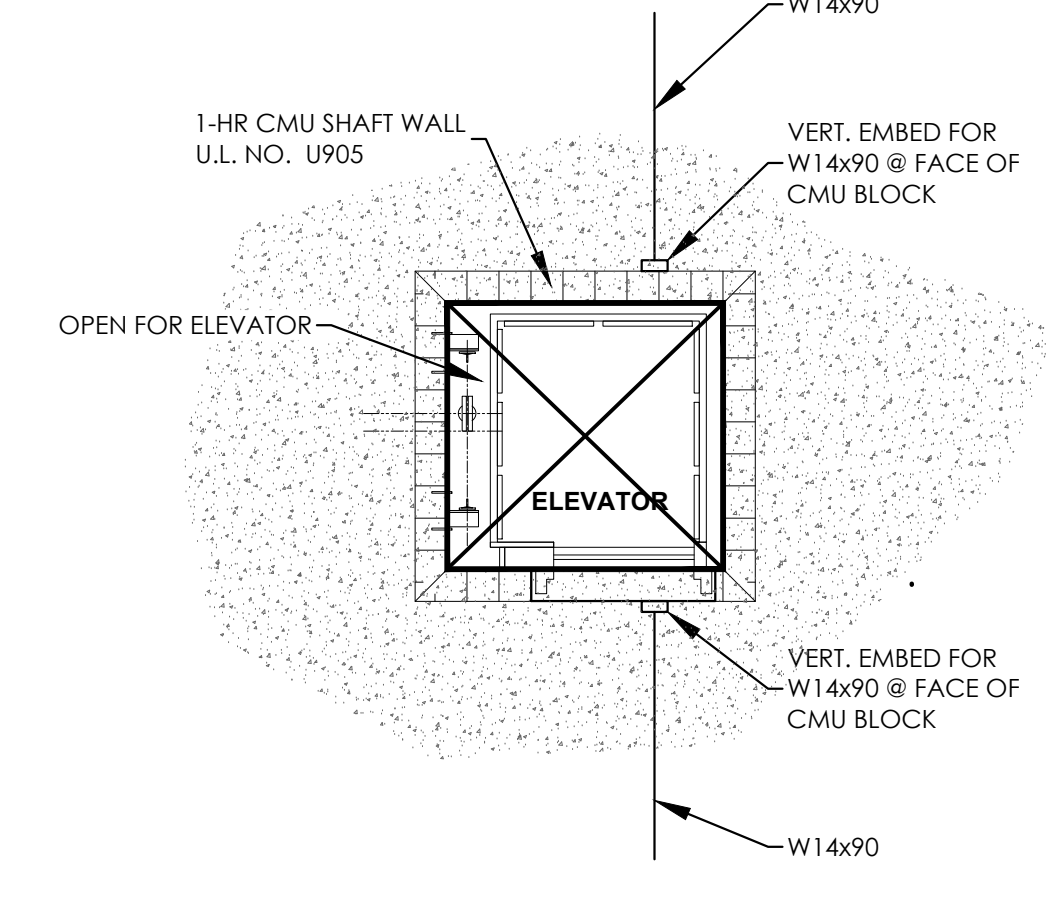
#### END OF SECTION

Intent of specification is to broadly outline equipment required but does not cover details of design and construction. Dimensions and specifications are subject to constant change and continually evolving codes and product applications. For additional technical information, contact Savaria at (800) 861-5112 or www.savaria.com.



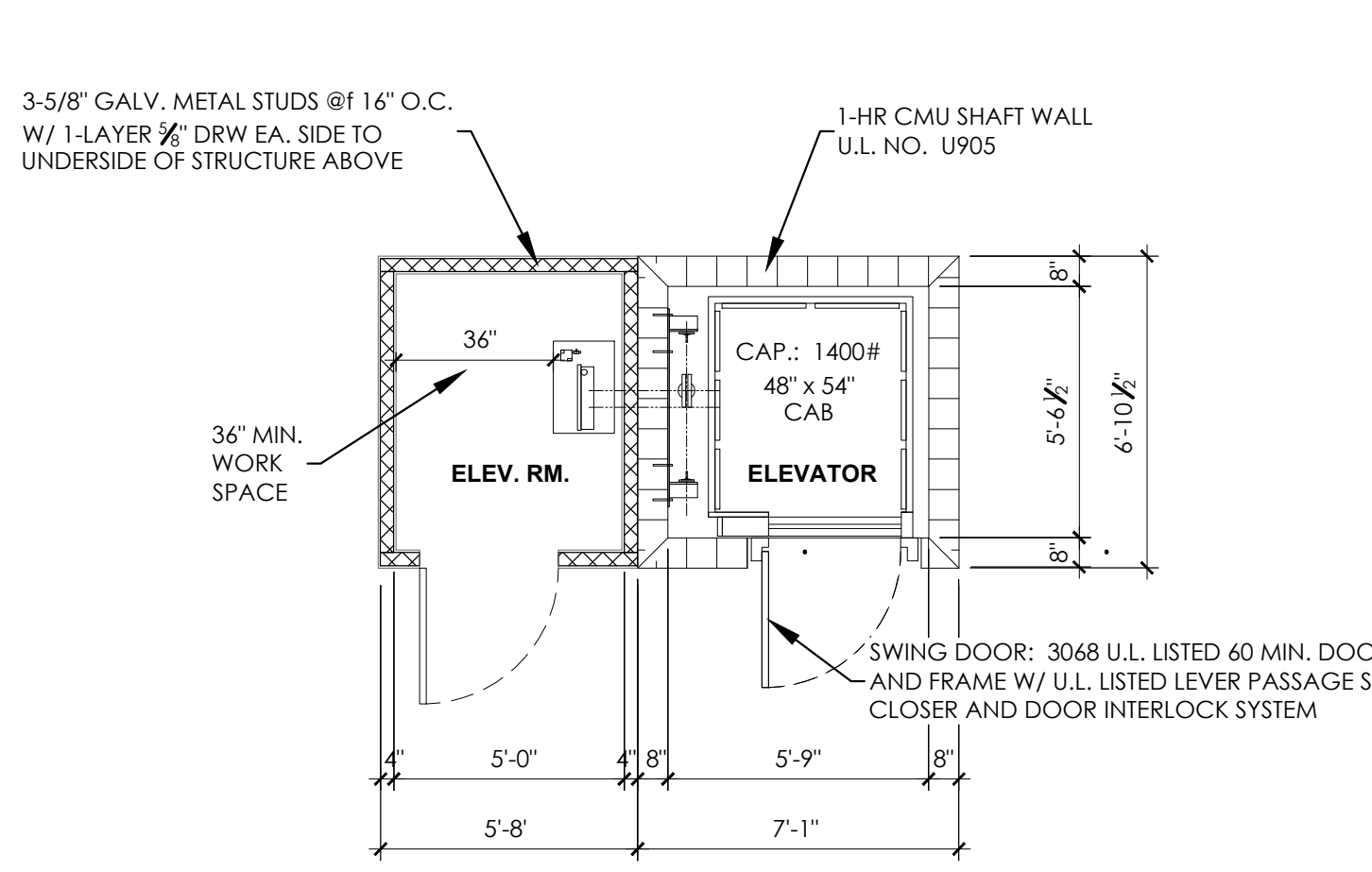
NOTE: SEE SHEET S-3 FOR ADDITIONAL INFORMATION.

6 TIE BEAM • 2ND FLOOR SCALE: 1/4" = 1'-0"



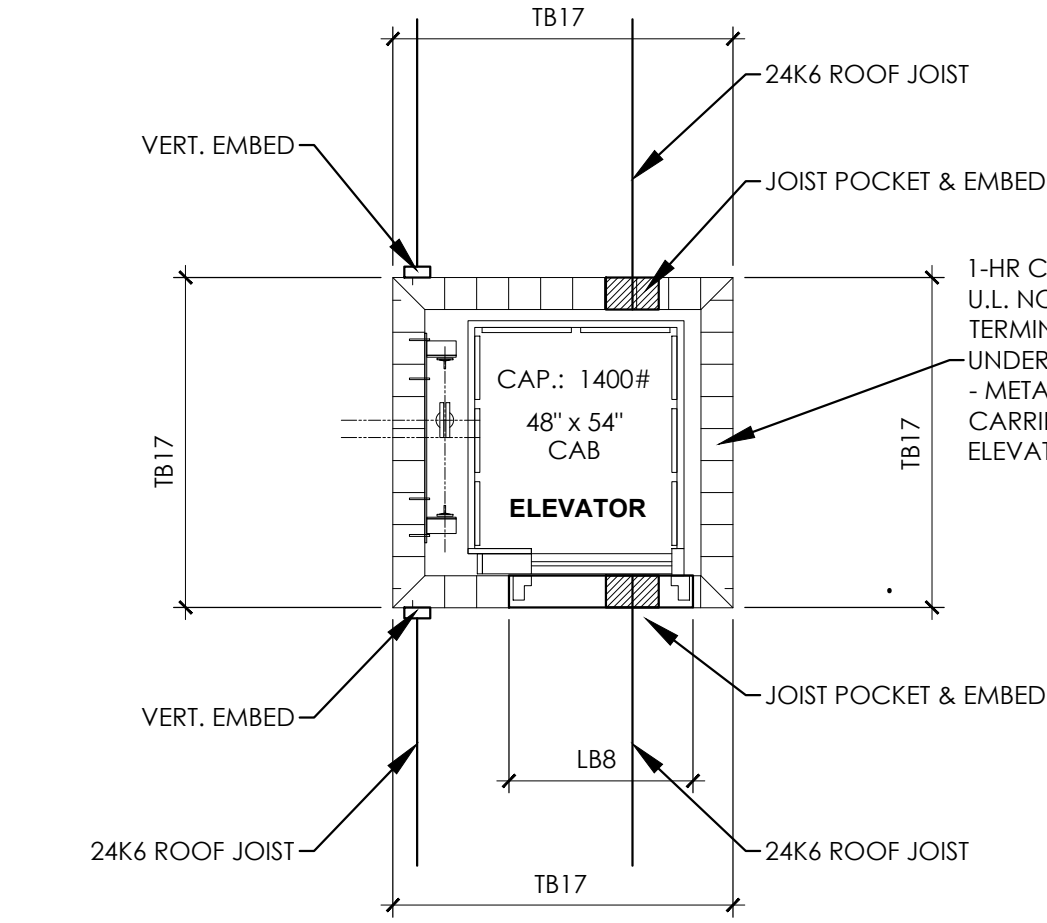
NOTE: SEE SHEET S-2 FOR ADDITIONAL INFORMATION.

4 FRAMING PLAN • 2ND FLOOR SCALE: 1/4" = 1'-0"



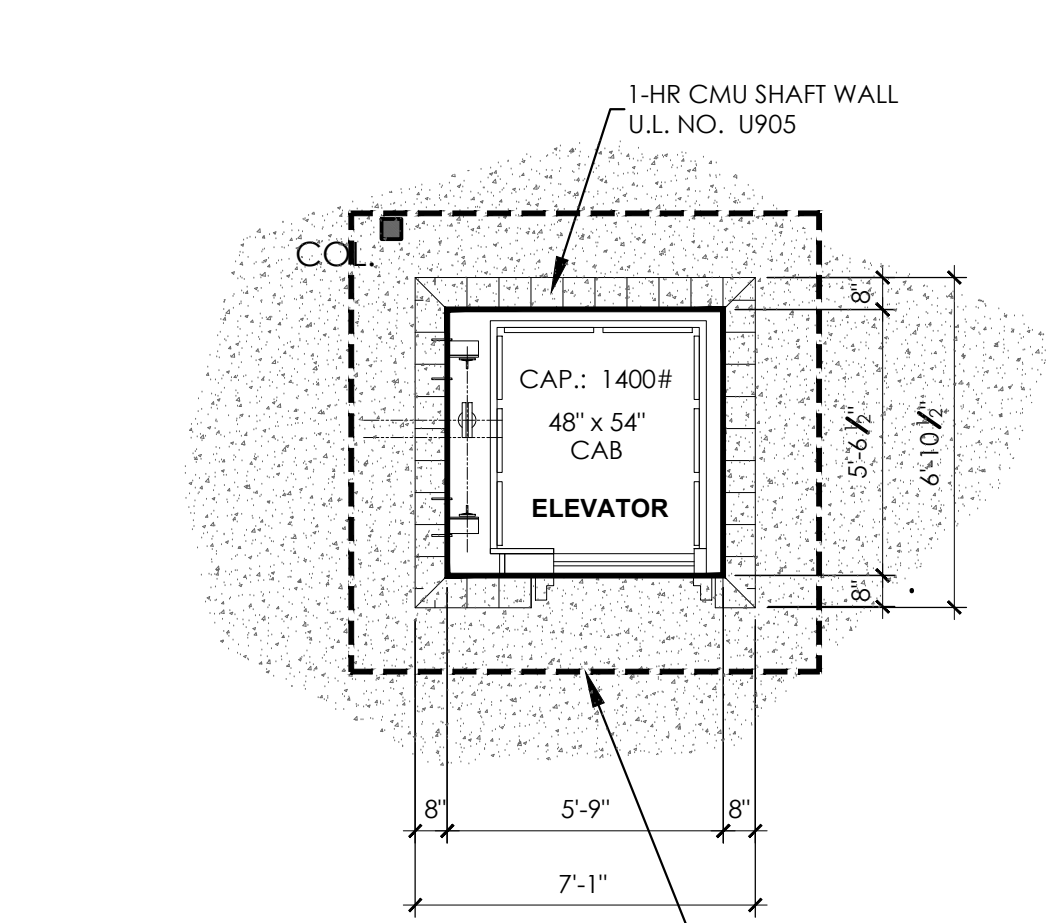
NOTE: SEE SHEETS E-1 AND E-2 FOR ADDITIONAL INFORMATION.

2 ELEVATOR PLAN • 2ND FLOOR SCALE: 1/4" = 1'-0"



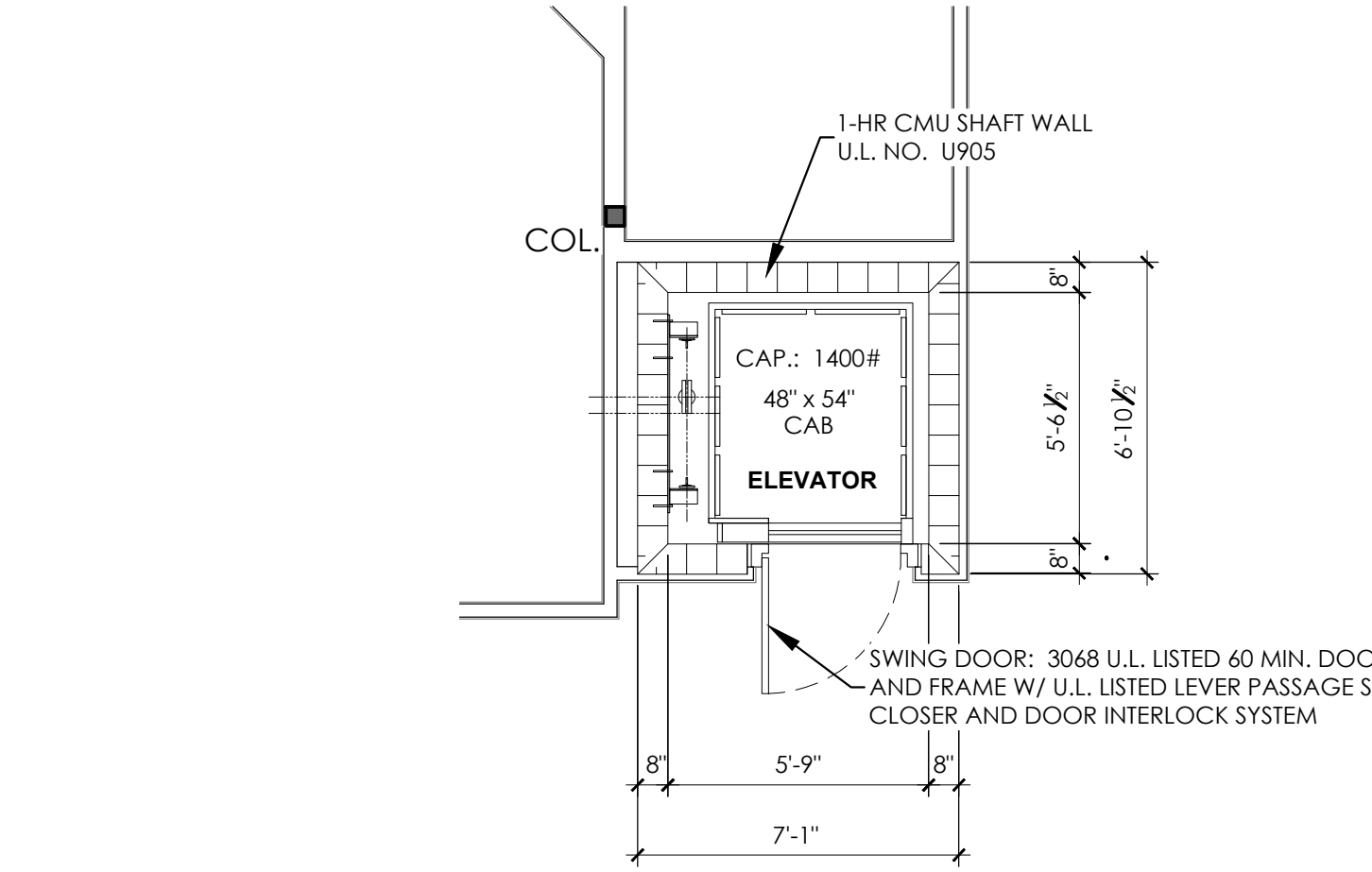
NOTE: SEE SHEET S-4 FOR ADDITIONAL INFORMATION.

5 TIE BEAM • ROOF LEVEL SCALE: 1/4" = 1'-0"



NOTE: SEE SHEET S-1 FOR ADDITIONAL INFORMATION.

3 FOUNDATION PLAN SCALE: 1/4" = 1'-0"



NOTE: SEE SHEETS E-1 AND E-2 FOR ADDITIONAL INFORMATION.

1 ELEVATOR PLAN • 1ST FLOOR SCALE: 1/4" = 1'-0"

7 ELEVATOR SHAFT DETAIL SCALE: 3/8" = 1'-0"

COMPLIANCE STATEMENT:  
 H.C. ACCESSIBILITY SHALL COMPLY W/  
 2012 FLORIDA ACCESSIBILITY CODE, SECT. 408.

600 PRESIDENTIAL COURT  
SUITE 400  
FT. MYERS, FLORIDA 33909  
PHONE 239-437-1900  
FAX 239-437-1905

Gensdorf & Gensdorf, Inc.  
Architects  
AIA 0003209

REVISION

1 04-10-15  
PER CITY  
COMMENT

NORTH TRAIL RV CENTER  
5270 ORANGE RIVER BLVD., FORT MYERS, FL 33905

ELEVATOR DETAILS  
SCALE: PER PLAN

PRINTED FOR PERMIT: MAR. 11, 2015

GREGORY W. GENSDOFF  
ARCHITECT  
FLORIDA REG. NO. 00010597

PROJECT FILE: 13-5330

A-7  
SHEET ADDED: