

EAST ELEVATION

PRESSURE CALCULATIONS

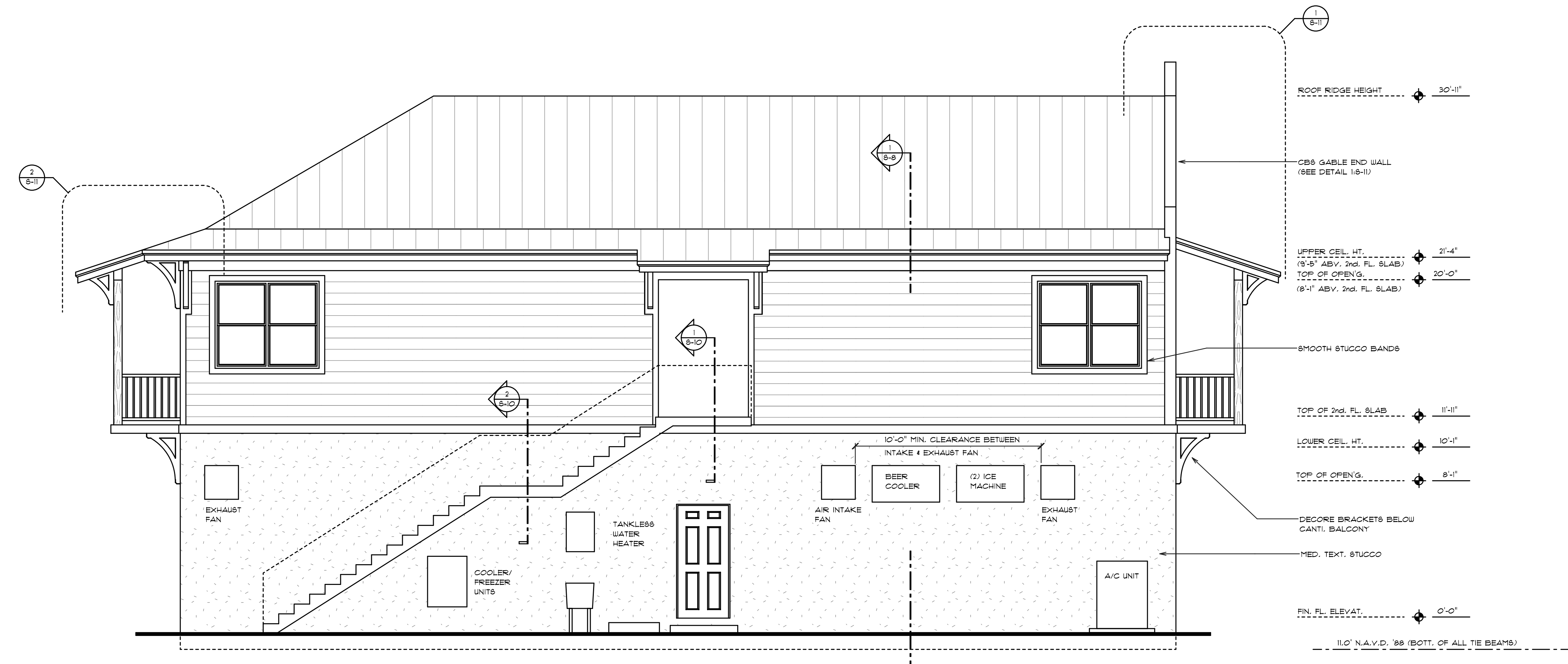
BASIC DESIGN PARAMETERS:

CODE:	F.B.C. 2010 + ASCE 7-10
WIND SPEED:	170 M.P.H. (ULT.) 132 M.P.H. (NOMINAL)
EXPOSURE CATEGORY:	D
RISK CATEGORY:	II
INTERNAL PRESS. COEFF.:	0.18 +/-
BUILDING CATEGORY:	ENCLOSED
MEAN ROOF HEIGHT ABV. GROUND LEVEL:	20 ft.
V ult (ULTIMATE DESIGN WIND VELOCITY):	170 M.P.H.
V des (NOMINAL DESIGN WIND VELOCITY):	V ult (1.15) = 131.1 M.P.H.

OPENING TYPE: (WORST CASE)	DESIGN PRESSURE (psf): + (POSITIVE) - (NEGATIVE)
OPERABLE WINDOWS + FIXED GLASS (10 sq. ft.)	+ 48.4 psf - 64.8 psf
SLING DOORS (20 sq. ft.)	+ 46.3 psf - 60.6 psf
DOUBLE SLING DOOR (50 sq. ft.)	+ 43.4 psf - 55.3 psf
SLIDING GLASS DOORS (100 sq. ft.)	+ 40.9 psf - 50.4 psf

NOTE:
DESIGN WIND PRESSURES LISTED ABOVE ARE BASED ON ASCE 7-10, CHAPTER 30

VELOCITY PRESSURE = $0.00256 K_z K_{zt} K_d V^2$
DESIGN PRESSURE = $qH/GCp - (GCpi) / (psf)$



WEST ELEVATION

REVISIONS	BY

SHORELINE DESIGN INC.
RICHARD A. DAVIS A.I.B.D.
341 ALT. A-1-A, SUITE E
JUPITER, FLORIDA, 33411
(561) 744-4973

A.I. MEMBER OF THE AMERICAN INSTITUTE OF BUILDING DESIGN
SOFTPLAN
ARCHITECTURAL DESIGN SOFTWARE

STRUCTURAL ENGINEERING
"STRUCTURAL REVIEW ONLY"
ROBERT J. CUTCHER P.E.
18001 S.E. FEDERAL HIGHWAY
TEQUESTA, FL. 33469

SQUARE GROUPE
TIKI BAR / FORT PIERCE
PARCEL B, SEAWAY DRIVE, FORT PIERCE, FL.
MAIN BUILDING

DRAWN	T. BERNDT
CHECKED	R. DAVIS A.I.B.D.
DATE	May 08, 2015
SCALE	1/4" = 1'-0"
JOB NO.	