

ELLIOTT
MARSHALL
INNES
P.A.



ARCHITECTURE
PLANNING
INTERIORS

LICENSE # 5
AA C000409
IB C000153

251 E. 7TH AVE.
TALLAHASSEE
FLORIDA 32303
(850) 222-7442
FAX 222-7446

NOTE:
11" x 17" SHEETS ARE PLOTTED AT 1/2
THE SCALE NOTED ON THESE DRAWINGS.

**WALTON MIDDLE
SCHOOL**
Defuniak Springs, FL

**New Construction,
Renovation & Site
Development**

REV	DATE	DESCRIPTION
1	2014 06 27	ADDENDUM #02

PROJECT PHASE 100% CONSTRUCTION DOCUMENTS	
DATE 23 JULY 2014	DRAWN BY EP
PROJECT NO 56100	CHECKED BY BI/WFD
SHEET TITLE MASTER PLAN	

SHEET NO A110	REV NO △
-------------------------	-------------

MASTER PLAN
1/8" = 1'-0"
NORTH

. 1 OF 5

CONSTRUCTION NOTES:

- 1 DUAL ELECTRIC WATER COOLER, ONE OF THE WATER COOLERS SHALL HAVE ITS SPOUT NO HIGHER THAN 36" AFF MEASURED FROM THE FLOOR TO THE SPOUT OUTLET.
- 2 6'-0" W x 4'-0" H MARKERBOARD @ 3'-0" AFF.
- 3 4'-0" W x 4'-0" H TACKBOARD (MOUNT @ 3'-0" AFF)
- 4 PROVIDE ACOUSTICAL WALL PANELS ON ALL WALLS AS SHOWN ON INTERIOR ELEVATIONS.
- 5 EXTEND WALLS TO UNDERSIDE OF ROOF.
- 6 FLAT SCREEN TV (N.I.C.)
- 7 COUNTER FOR COMPUTER STATIONS. PROVIDE A 3" GROMMET AT EACH COMPUTER STATION.
- 8 PROVIDE FIRE EXTINGUISHER AND FIRE EXTINGUISHER CABINET (MOUNT WITH TOP OF CABINET AT 54" AFF)
- 9 PROVIDE BRACKET MOUNTED FIRE EXTINGUISHER. (MOUNT WITH TOP AT 48" AFF)
- 10 PROVIDE WALL FINISH, FLOORING AND BASE AS SCHEDULED.
- 11 5'-0" W x 4'-0" H TACKBOARD (MOUNT @ 3'-0" AFF)
- 12 PROVIDE HC ACCESSIBLE PLUMBING FIXTURES - COORDINATE WITH MEP.
- 13 TEACHER AV CABINET (O.F.O.I.)
- 14 PROVIDE PLASTIC SHELVING UNIT WITH (4)SHELVES-18" DEEP X 31" WIDE
- 15 MICROWAVE (N.I.C.)
- 16 REFRIGERATOR (N.I.C.)
- 17 PROVIDE CASEWORK AS SPECIFIED. SEE INTERIOR ELEVATIONS.
- 18 SERVICE FLOOR SINK WITH BROOM AND MOP HOLDER ON WALL ABOVE.
- 19 FILE CABINETS (N.I.C.)
- 20 PROVIDE COMBINATION OF (2) 2-TIER 12"W x 15"D x 36"H AND (4) 6-TIER 12"W x 15"D x 12"H P.E. LOCKERS
- 21 PROVIDE 2-TIER METAL LOCKER SYSTEM 24"W x 21"D x 72"H (VARSITY LOCKERS)
- 22 WASHER/DRYER (N.I.C.)
- 23 ACTIVE BOARD (O.F.O.I.)
- 24 PROVIDE ALUMINUM CANOPY SYSTEM.
- 25 "MAXIMUM OCCUPANCY" SIGN. SEE SIGN SCHEDULE.
- 26 6'-0" HIGH BLACK VINYL CHAIN LINK FENCE AND GATE.
- 27 PROVIDE STEEL SHELVING UNIT WITH ADJUSTABLE STEEL SHELVES 24" DEEP (5 SHELVES MINIMUM)
- 28 LOCKER BENCHES
- 29 PROVIDE (2) 24" W x 36"H BULLETIN BOARD WITH GLASS DOOR AND ALUMINUM FRAME (MOUNT @ 3'-4" AFF).
- 30 CEILING MOUNTED PROJECTOR. REFER TO TEL COMMUNICATION SHEETS
- 31 LAUNDRY SINK
- 32 EXISTING MILLWORK TO REMAIN.
- 33 PROVIDE BUILT-IN TROPHY CASE.
- 34 8'-0" W x 4'-0" H MARKERBOARD AND 6'-0" W x 4'-0" H TACKBOARD. (U.O.N.)
- 35 MECHANICAL EQUIPMENT YARD (TYP.).
- 36 ICE MACHINE (N.I.C.)
- 37 4" WIDE STEEL TROWEL FINISHED EDGE.
- 38 COPIER (N.I.C.)
- 39 8'-0" W x 4'-0" H TACKBOARD (MOUNT @ 3'-0" AFF)
- 40 STACKED WASHER/DRYER
- 41 TEACHER DEMONSTRATION DESK
- 42 LOCKABLE METAL CLAY DRY CABINET
- 43 SCHOOL SUPPLY DISPLAY CASE.
- 44 PROVIDE NEW COUNTER TOP TO MATCH ADJACENT EXISTING COUNTER.
- 45 WOOD ATHLETIC FLOORING. SEE SHEET A-620 FOR GYM STRIPING PLAN.
- 46 6'-0" W x 4'-0" H MARKERBOARD (MOUNT @ 3'-0" AFF)
- 47 PROVIDE CUBICLE CURTAIN. COORDINATE WITH REFLECTED CEILING PLAN.
- 48 CURTAIN AT PROSCENIUM ARCH.
- 49 CURTAINS, WEIGHTS PER SPECIFICATIONS. REFER TO THEATER DRAWINGS.
- 50 LOCKABLE METAL CLAY DRY CABINET
- 51 WHIRLPOOL N.I.C.
- 52 PATIENT BED (N.I.C.)
- 53 PROVIDE ACOUSTICAL CEILING PANELS PER REFLECTED CEILING PLAN.
- 54 CLAY TURN WHEELS BUILT-IN TO CABINET
- 55 MOBILE CART (N.I.C.)
- 56 BOOK DETECTION SYSTEM & ELECTRONIC CONTROL UNIT
- 57 3'-0" W x 4'-0" H TACKBOARD (MOUNT @ 3'-0" AFF)
- 58 PROVIDE GYPSUM WALLED CEILING WITH EPOXY PAINT.
- 59 2-HANDICAPPED WHEELCHAIR SEATING CUT OUTS, COMPLY WITH ADA REQUIREMENTS.
- 60 STAINLESS STEEL ROLLING COUNTER DOOR MOUNTED BETWEEN JAMBS WITH INTEGRAL FRAME AND SILL (COORDINATE WITH FOOD SERVICE).
- 61 12'-0" W x 4'-0" H TACKBOARD
- 62 EPOXY WALL PAINT IN AREAS AS INDICATED
- 63 EMERGENCY SHOWER, EYEWASH, AND F.D.
- 64 COORDINATE OPENING SIZE IN WALL WITH FOOD SERVICE EQUIPMENT CLEARANCES.
- 65 BOLLARD, DTL M/AS03
- 66 METAL P.E. STORAGE LOCKERS 36"W x 36"D x 90"H
- 67 ACCENT WALL PAINT (SEE FINISH SCHEDULE FOR COLOR LISTING).
- 68 N/A
- 69 PROVIDE CONCRETE BASE UNDER LOCKERS
- 70 PROVIDE STEEL SHELVING UNIT WITH ADJUSTABLE STL SHELVES 24" DEEP X 48"W (5 SHELVES MINIMUM)
- 71 PROVIDE STEEL SHELVING UNIT WITH ADJUSTABLE STL SHELVES 24" DEEP X 48"W (5 SHELVES MINIMUM)
- 72 GYM DIVIDER CURTAIN SUSPENDED FROM STRUCTURE ABOVE.
- 73 STACKING BLEACHERS
- 74 SWING GLASS BACK BOARD
- 75 PROTECTIVE RAILINGS
- 76 RECESSED VOLLEYBALL SLEEVE
- 77 WALL PADDING
- 78 POPCORN MACHINE (N.I.C.)
- 79 SODA DISPENSER (N.I.C.)
- 80 NEW CMU WALL
- 81 PAINT WALLS AS SCHEDULED. PATCH AS NEEDED. PROTECT EXISTING SURFACES/ITEMS TO REMAIN.
- 82 ROLL UP SECURITY GRILLE.
- 83 PROVIDE RECESSED MOTORIZED PROJECTION SCREEN WITH ENCLOSURE-REFER TO SECTION
- 84 SEE FOOD SERVICE DRAWINGS.
- 85 PROVIDE TWO TIER 12"W x 36"H x 15"D METAL LOCKERS.
- 86 CAN WASH
- 87 PAPER TOWEL DISPENSER
- 88 INSTRUMENT STORAGE CABINETS - SEE INTERIOR ELEVATIONS. (BASIS OF DESIGN: WENGER)
- 89 (2) 6'-0" W x 4'-0" H MARKERBOARD (MOUNT @ 3'-0" AFF)
- 90 PLACE BATT INSULATION OVER THE ACOUSTICAL CEILING.
- 91 PROVIDE STEEL SHELVING UNIT WITH ADJUSTABLE STEEL SHELVES 12" DEEP X 36"W (5 SHELVES MINIMUM)
- 92 PROVIDE A BULLET PROOF WINDOW AND SURROUNDING WALL.
- 93 GARAGE STYLE GLASS OVER HEAD DOOR
- 94 SCORE BOARD
- 95 POWERED COMPUTER TABLES (N.I.C.)
- 96 BUILT-IN BENCH
- 97 BOLLARD- SEE DETAIL M/AS03
- 98 TERMINATION ABOVE GRADE-EMERGENCY OVERFLOW DRAIN SCUPPER W/ CONC. SPLASH BLOCK.
- 99 NEW HANDRAILS
- 100 EXISTING EMERGENCY EYE-WASH/SHOWER TO REMAIN.
- 101 PROVIDE TOILET COMPARTMENT/ URINAL SCREEN SYSTEM.
- 102 6'-0" W x 4'-0" H TACKBOARD (MOUNT @ 3'-0" AFF)
- 103 NEW CONCRETE STOOP
- 104 TYP. CONNECT DOWNSPOUT TO STORMWATER SYSTEM.
- 105 PROVIDE BUS SAFETY RAILING.
- 106 WALK-OFF MAT- N.I.C. (FTE)
- 107 SAW CUT SLAB AS NECESSARY FOR INSTALLATION OF NEW SLAB SYSTEM FOR NEW OR RELOCATED FLOOR DRAIN PIPING.
- 108 REPAIR EXISTING WALL / FLOOR TO MATCH ADJACENT EXISTING MATERIAL WHERE PLUMBING IS REMOVED.
- 109 PROVIDE CARD READER- RESTRICTED ACCESS.
- 110 COORDINATE SLAB AND WALL CUTS W/MECH SHEETS. PATCH LEVEL AND MATCH EXISTING MATERIALS.
- 111 PROVIDE NEW DOWNSPOUT (MATCH EXISTING SIZE) AND NEW DOWNSPOUT BOOT; AND CONNECT TO STORMWATER DRAINAGE SYSTEM.
- 112 EXISTING DOWNSPOUTS TO REMAIN.

ELLIOTT MARSHALL INNES P.A.



ARCHITECTURE
PLANNING
INTERIORS

LICENSE # s
AA C000409
IB C000153

251 E. 7TH AVE.
TALLAHASSEE
FL ORDA 32303
(850) 222-7442
FAX 222-7446

NOTE:
11" x 17" SHEETS ARE PLOTTED AT 1/2
THE SCALE NOTED ON THESE DRAWINGS.

WALTON MIDDLE SCHOOL
Defuniak Springs, FL

**New Construction,
Renovation & Site
Development**

REV	DATE	DESCRIPTION

PROJECT PHASE
100% CONSTRUCTION DOCUMENTS

DATE
23 JULY 2014

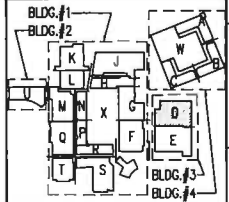
PROJECT NO
58100

SHEET TITLE
**FLOOR PLAN-
ZONE 'D'**

SHEET NO
A114

REV NO

KEYPLAN



BUILDING FLOOR PLAN GENERAL NOTES:

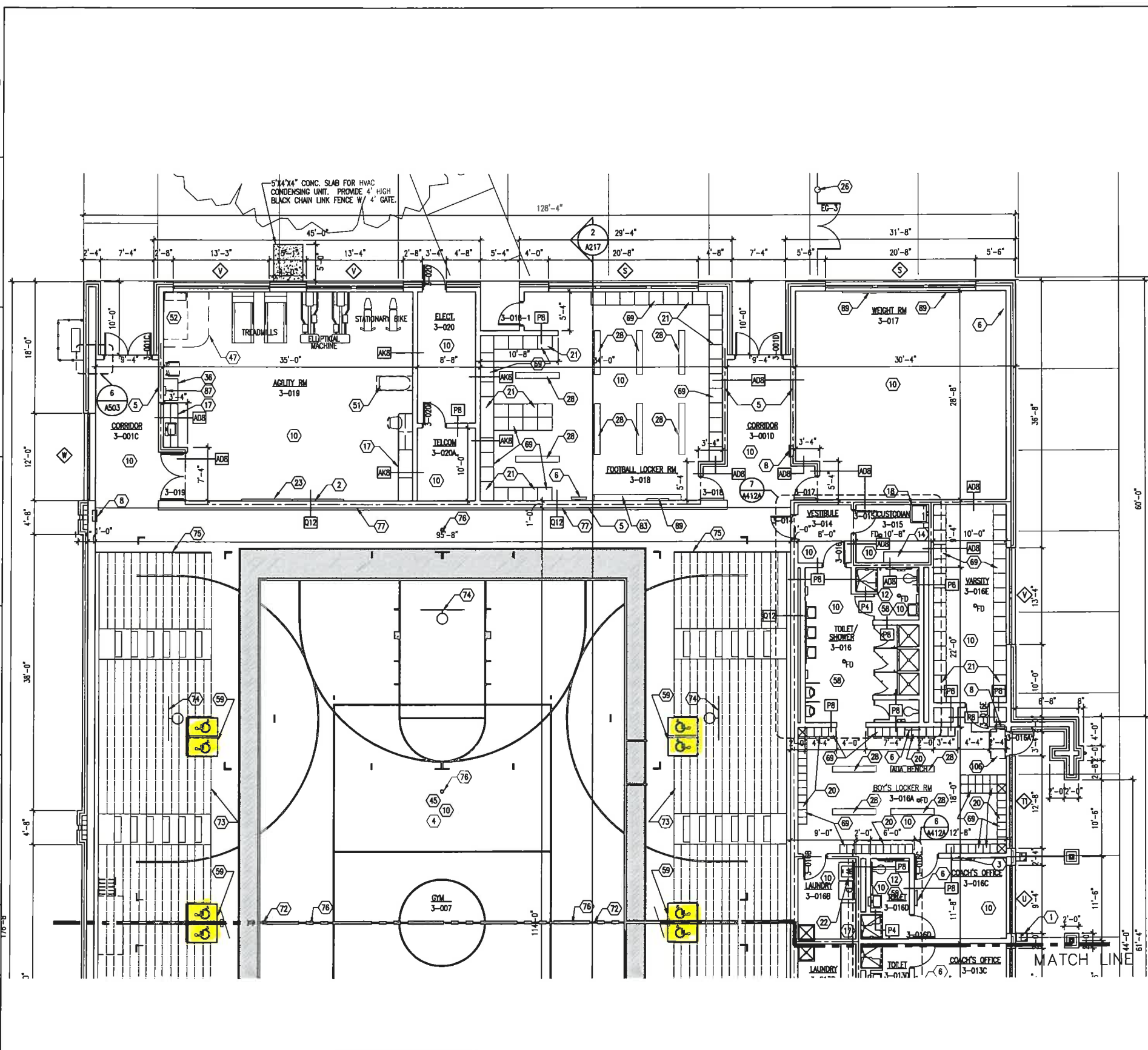
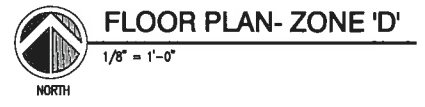
1. EXIT ACCESS CORRIDOR PARTITIONS SHALL BE TYPE "C" UNLESS SPECIFICALLY NOTED OTHERWISE.
2. PARTITIONS ENCLOSING EXIT STAIRWELLS SHALL BE TYPE "M" UNLESS SPECIFICALLY NOTED OTHERWISE.
3. REFER TO SHEET A401 FOR ENLARGED, TYPICAL CLASSROOM FLOOR PLANS. FOR THOSE CLASSROOMS THAT DIFFER, REFER TO THE FLOOR PLAN SHEETS FOR ADDITIONAL DIMENSIONS AND NOTES.
4. SEE ELECTRICAL DRAWINGS FOR EXIT SIGN LOCATIONS.
5. INTERIOR FINISHES TO BE CLASS B OR C EXCEPT IN CAFETERIA, STAGE, GYM AND CORRIDOR SPACES SHALL BE CLASS A.

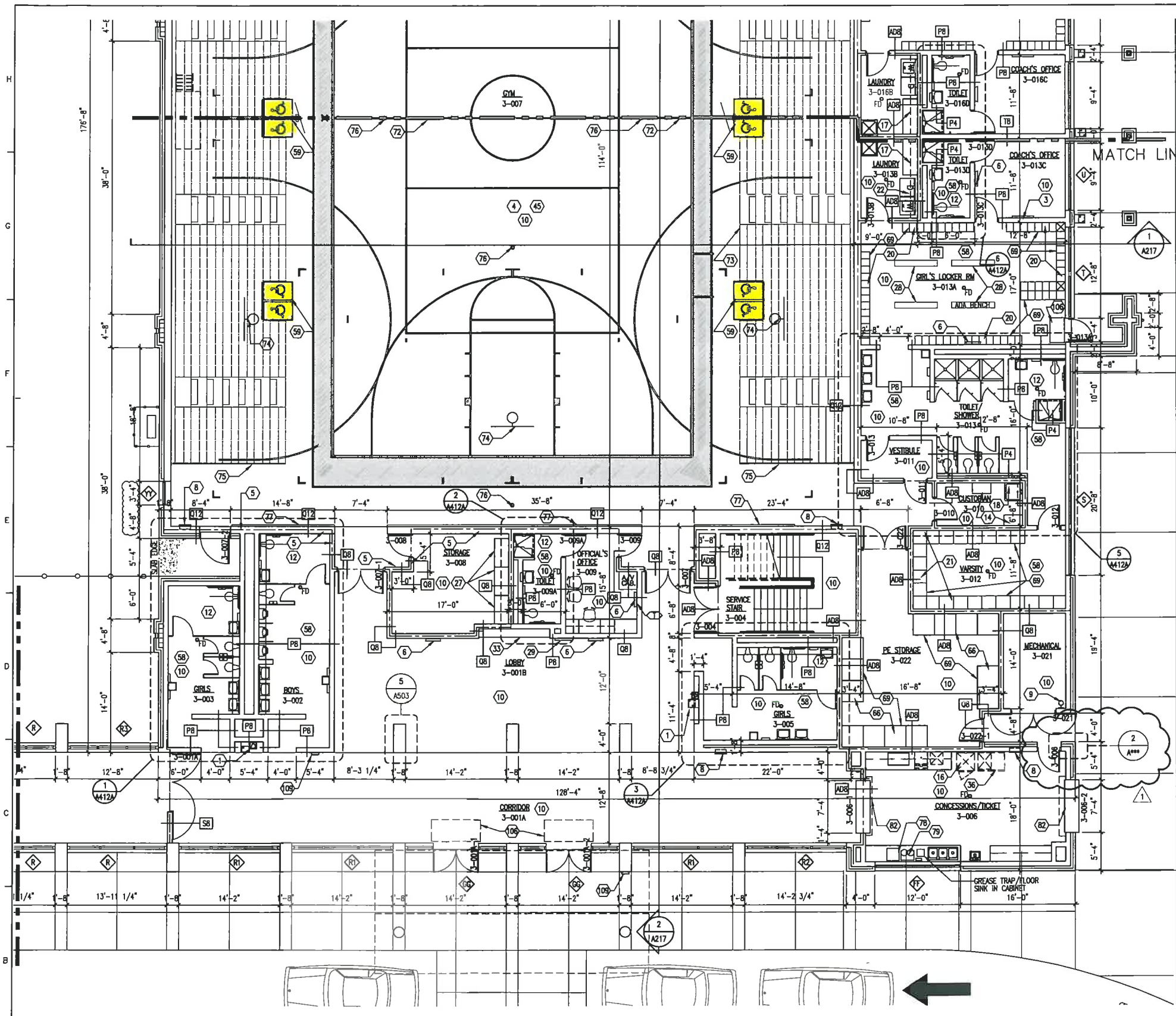
6. REFER TO SHEET A601 FOR DOOR SCHEDULE.
7. PROVIDE ALUMINUM THRESHOLD WITH VINYL SEAL AT ALL EXTERIOR DOORS.
8. DOORS ARE TO BE LOCATED 4" MIN. OFF ADJACENT WALL UNLESS NOTED OTHERWISE.
9. FOR PARTITION TYPES REFER TO WALL TYPES ON SHEETS G104, G105 AND G106 FOR INFORMATION.
10. N/A

11. N/A
12. F.E. INDICATES FIRE EXTINGUISHER, MOUNT AS INDICATED ON SHEET FIRE EXTINGUISHER LOCATION DIMENSIONS SHALL BE THE SAME ON ALL FLOORS.
13. REFER TO ELECTRICAL SHEETS FOR FIRE ALARM, PULL, CONTROL PANEL, SIGNALS, HORN LOCATIONS AND EXIT SIGNS.
14. BUILDINGS ARE DESIGNED AND SHALL BE CONSTRUCTED TO MEET WIND LOADS PER STRUCTURAL DRAWINGS. CONSTRUCTION TO COMPLY WITH THE REQUIREMENTS FOR HURRICANE RESISTANT CONSTRUCTION AND/OR SECTION 1806 OF F.B.C. REFER TO STRUCTURAL SHEETS FOR FRAMING CONNECTION DETAILS.

15. CONTRACTOR SHALL MAKE AVAILABLE TO THE BUILDING INSPECTOR ANY INSTALLATION DOCUMENTATION NECESSARY TO VERIFY THAT ALL PRODUCTS REQUIRING PRODUCT APPROVAL PER FS 553.842 ARE IN COMPLIANCE.

.2 OF 5





CONSTRUCTION NOTES:

1. DUAL ELECTRIC WATER COOLER. ONE OF THE WATER COOLERS SHALL HAVE ITS SPOUT NO HIGHER THAN 36" AFF, MEASURED FROM THE FLOOR TO THE SPOUT OUTLET.
2. 6'-0" W x 4'-0" H MARKERBOARD @ 3'-0" AFF.
3. 4'-0" W x 4'-0" H TACKBOARD (MOUNT @ 3'-0" AFF)
4. PROVIDE ACOUSTICAL WALL PANELS ON ALL WALLS AS SHOWN ON INTERIOR ELEVATIONS.
5. EXTEND WALLS TO UNDERSIDE OF ROOF.
6. FLAT SCREEN TV (N.I.C.)
7. COUNTER FOR COMPUTER STATIONS. PROVIDE A 3" GROMMET AT EACH COMPUTER STATION.
8. PROVIDE FIRE EXTINGUISHER AND FIRE EXTINGUISHER CABINET (MOUNT WITH TOP OF CABINET AT 54" AFF)
9. PROVIDE BRACKET MOUNTED FIRE EXTINGUISHER. (MOUNT WITH TOP AT 48" AFF)
10. PROVIDE WALL FINISH, FLOORING AND BASE AS SCHEDULED.
11. 5'-0" W x 4'-0" H TACKBOARD (MOUNT @ 3'-0" AFF)
12. PROVIDE HC ACCESSIBLE PLUMBING FIXTURES -COORDINATE WITH MEP.
13. TEACHER AV CABINET (O.F.O.I.)
14. PROVIDE PLASTIC SHELVING UNIT WITH (4)SHELVES-18" DEEP X 31" WIDE
15. MICROWAVE (N.I.C.)
16. REFRIGERATOR (N.I.C.)
17. PROVIDE CASEWORK AS SPECIFIED. SEE INTERIOR ELEVATIONS.
18. SERVICE FLOOR SINK WITH BROOM AND MOP HOLDER ON WALL ABOVE.
19. FILE CABINETS (N.I.C.)
20. PROVIDE COMBINATION OF (21) 2-TIER 12"W x 15"D x 36"H AND (42) 6-TIER 12"W x 15"D x 12"H P.E. LOCKERS
21. PROVIDE 2-TIER METAL LOCKER SYSTEM 24"W x 21"D x 72"H (VARSITY LOCKERS)
22. WASHER/DRYER (N.I.C.)
23. ACTIVE BOARD (O.F.O.I.)
24. PROVIDE ALUMINUM CANOPY SYSTEM.
25. "MAXIMUM OCCUPANCY" SIGN. SEE SIGN SCHEDULE.
26. 6'-0" HIGH BLACK VINYL CHAIN LINK FENCE AND GATE.
27. PROVIDE STEEL SHELVING UNIT WITH ADJUSTABLE STEEL SHELVES 24" DEEP (5 SHELVES MINIMUM)
28. LOCKER BENCHES
29. PROVIDE (2) 24" W x 36" H BULLET BOARD WITH GLASS DOOR AND ALUMINUM FRAME (MOUNT @ 3'-4" AFF).
30. CEILING MOUNTED PROJECTOR. REFER TO TEL COMMUNICATION SHEETS
31. LAUNDRY SINK
32. EXISTING MILLWORK TO REMAIN.
33. PROVIDE BUILT-IN TROPHY CASE.
34. 8'-0" W x 4'-0" H MARKERBOARD AND 6'-0" W x 4'-0" H TACKBOARD. (U.O.N.)
35. MECHANICAL EQUIPMENT YARD (TYP.).
36. ICE MACHINE (N.I.C.)
37. 4" WIDE STEEL TROWEL FINISHED EDGE.
38. COPIER (N.I.C.)
39. 8'-0" W x 4'-0" H TACKBOARD (MOUNT @ 3'-0" AFF)
40. STACKED WASHER/DRYER
41. TEACHER DEMONSTRATION DESK
42. LOCKABLE METAL CLAY DRY CABINET
43. SCHOOL SUPPLY DISPLAY CASE.
44. PROVIDE NEW COUNTER TOP TO MATCH ADJACENT EXISTING COUNTER.
45. WOOD ATHLETIC FLOORING. SEE SHEET A-620 FOR GYM STRIPING PLAN.
46. 6'-0" W x 4'-0" H MARKERBOARD (MOUNT @ 3'-0" AFF)
47. PROVIDE CURTAIN. COORDINATE WITH REFLECTED CEILING PLAN.
48. CURTAIN AT PROSCENIUM ARCH.
49. CURTAINS, WEIGHTS PER SPECIFICATIONS. REFER TO THEATER DRAWINGS.
50. LOCKABLE METAL CLAY DRY CABINET
51. WHIRLPOOL (N.I.C.)
52. PATIENT BED (N.I.C.)
53. PROVIDE ACOUSTICAL CEILING PANELS PER REFLECTED CEILING PLAN.
54. CLAY TURN WHEELS BUILT-IN TO CABINET
55. MOBILE CART (N.I.C.)
56. BOOK DETECTION SYSTEM & ELECTRONIC CONTROL UNIT
57. 3'-0" W x 4'-0" H TACKBOARD (MOUNT @ 3'-0" AFF)
58. PROVIDE GYPSUM WALLED CEILING WITH EPOXY PAINT.
59. 2-HANDICAPPED WHEELCHAIR SEATING CUT OUTS, COMPLY WITH ADA REQUIREMENTS.
60. STAINLESS STEEL ROLLING COUNTER DOOR MOUNTED BETWEEN JAMBS WITH INTEGRAL FRAME AND SILL (COORDINATE WITH FOOD SERVICE).
61. 12'-0" W x 4'-0" H TACKBOARD
62. EPOXY WALL PAINT IN AREAS AS INDICATED
63. EMERGENCY SHOWER, EYEWASH, AND F.D.
64. COORDINATE OPENING SIZE IN WALL WITH FOOD SERVICE EQUIPMENT CLEARANCES.
65. BOLLARD, DTL. M/A/AS03
66. METAL P.E. STORAGE LOCKERS 36"W x 36"D x 80"H.
67. ACCENT WALL PAINT (SEE FINISH SCHEDULE FOR COLOR LISTING).
68. N/A
69. PROVIDE CONCRETE BASE UNDER LOCKERS
70. PROVIDE STEEL SHELVING UNIT WITH ADJUSTABLE STL SHELVES 24" DEEP X 48"W (5 SHELVES MINIMUM).
71. PROVIDE STEEL SHELVING UNIT WITH ADJUSTABLE STL SHELVES 24" DEEP X 48"W (5 SHELVES MINIMUM).
72. GYM DIVIDER CURTAIN SUSPENDED FROM STRUCTURE ABOVE.
73. STACKING BLEACHERS
74. SWING GLASS BACK BOARD
75. PROTECTIVE RAILINGS
76. RECESSED VOLLEYBALL SLEEVE
77. WALL PADDING
78. POPCORN MACHINE (N.I.C.)
79. SODA DISPENSER (N.I.C.)
80. NEW CMU WALL
81. PAINT WALLS AS SCHEDULED, PATCH AS NEEDED. PROTECT EXISTING SURFACES/ITEMS TO REMAIN.
82. ROLL UP SECURITY GRILLE.
83. PROVIDE RECESSED MOTORIZED PROJECTION SCREEN WITH ENCLOSURE-REFER TO SECTION
84. SEE FOOD SERVICE DRAWINGS.
85. PROVIDE TWO TIER 12"W x 36"H x 15"D METAL LOCKERS.
86. CAN WASH
87. PAPER TOWEL DISPENSER
88. INSTRUMENT STORAGE CABINETS - SEE INTERIOR ELEVATIONS. (BASES OF DESIGN: WENGER).
89. (2) 6'-0" W x 4'-0" H MARKERBOARD (MOUNT @ 3'-0" AFF)
90. PLACE BATT INSULATION OVER THE ACOUSTICAL CEILING.
91. PROVIDE STEEL SHELVING UNIT WITH ADJUSTABLE STEEL SHELVES 12" DEEP X 36"W (5 SHELVES MINIMUM)
92. PROVIDE A BULLET PROOF WINDOW AND SURROUNDING WALL.
93. GARAGE STYLE GLASS OVER HEAD DOOR
94. SCORE BOARD
95. POWERED COMPUTER TABLES (N.I.C.)
96. BUILT-IN BENCH
97. BOLLARD- SEE DETAIL M/A/AS03
98. TERMINATION ABOVE GRADE-EMERGENCY OVERFLOW DRAIN SCUPPER W/ CONC. SPLASH BLOCK.
99. NEW HANDRAILS
100. EXISTING EMERGENCY EYE-WASH/SHOWER TO REMAIN.
101. PROVIDE TOILET COMPARTMENT/ URINAL SCREEN SYSTEM.
102. 6'-0" W x 4'-0" H TACKBOARD (MOUNT @ 3'-0" AFF).
103. NEW CONCRETE STOOP
104. TYP. CONNECT DOWNSPOUT TO STORMWATER SYSTEM.
105. PROVIDE BUS SAFETY RAILING.
106. WALK-OFF MAT- N.I.C. (FFE)
107. SAW CUT SLAB AS NECESSARY FOR INSTALLATION OF NEW SLAB SYSTEM FOR NEW OR RELOCATED FLOOR DRAIN PIPING.
108. REPAIR EXISTING WALL /FLOOR TO MATCH ADJACENT EXISTING MATERIAL WHERE PLUMBING IS REMOVED.
109. PROVIDE CARD READER- RESTRICTED ACCESS.
110. COORDINATE SLAB AND WALL CUTS W/TELOCOM SHEETS. PATCH LEVEL AND MATCH EXISTING MATERIALS.
111. PROVIDE NEW DOWNSPOUT (MATCH EXISTING SIZE) AND NEW DOWNSPOUT BOOT, AND CONNECT TO STORMWATER DRAINAGE SYSTEM.
112. EXISTING DOWNSPOUTS TO REMAIN.

ELLIOTT MARSHALL INNES P.A.



ARCHITECTURE
PLANNING
INTERIORS

LICENSE # s
AA C000409
IB C000153

251 E. 7TH AVE.
TALLAHASSEE
FLORIDA 32303
(850) 222-7442
FAX 222-7446

NOTE:
11" x 17" SHEETS ARE PLOTTED AT 1/2
THE SCALE NOTED ON THESE DRAWINGS.

WALTON MIDDLE SCHOOL
Defuniak Springs, FL

**New Construction,
Renovation & Site
Development**

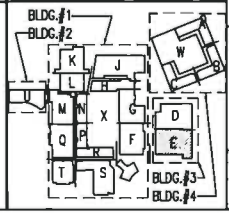
REV	DATE	DESCRIPTION
Δ	2014 08 11	ADDENDUM #1

PROJECT PHASE 100% CONSTRUCTION DOCUMENTS	
DATE 23 JULY 2014	DRAWN BY EP
PROJECT NO 56100	CHECKED BY BI/WFD
SHEET TITLE FLOOR PLAN- ZONE 'E'	
SHEET NO A115	REV NO Δ

BUILDING FLOOR PLAN GENERAL NOTES:

1. EXIT ACCESS CORRIDOR PARTITIONS SHALL BE TYPE "C" UNLESS SPECIFICALLY NOTED OTHERWISE.
2. PARTITIONS ENCLOSING EXIT STAIRWELLS SHALL BE TYPE "M" UNLESS SPECIFICALLY NOTED OTHERWISE.
3. REFER TO SHEET A401 FOR ENLARGED, TYPICAL CLASSROOM FLOOR PLANS. FOR THOSE CLASSROOMS THAT DIFFER, REFER TO THE FLOOR PLAN SHEETS FOR ADDITIONAL DIMENSIONS AND NOTES.
4. SEE ELECTRICAL DRAWINGS FOR EXIT SIGN LOCATIONS.
5. INTERIOR FINISHES TO BE CLASS B OR C EXCEPT IN CAFETERIA, STAGE, GYM AND CORRIDOR SPACES SHALL BE CLASS A.
6. REFER TO SHEET A601 FOR DOOR SCHEDULE.
7. PROVIDE ALUMINUM THRESHOLD WITH VINYL SEAL AT ALL EXTERIOR DOORS.
8. DOORS ARE TO BE LOCATED 4" MIN. OFF ADJACENT WALL UNLESS NOTED OTHERWISE.
9. FOR PARTITION TYPES REFER TO WALL TYPES ON SHEETS G104, G105 AND G106 FOR INFORMATION.
10. N/A
11. N/A
12. F.E. INDICATES FIRE EXTINGUISHER, MOUNT AS INDICATED ON SHEET FIRE EXTINGUISHER LOCATION DIMENSIONS SHALL BE THE SAME ON ALL FLOORS.
13. REFER TO ELECTRICAL SHEETS FOR FIRE ALARM, PULL, CONTROL PANEL, SIGNALS, HORN LOCATIONS AND EXIT SIGNS.
14. BUILDINGS ARE DESIGNED AND SHALL BE CONSTRUCTED TO MEET WIND LOADS PER STRUCTURAL DRAWINGS. CONSTRUCTION TO COMPLY WITH THE REQUIREMENTS FOR HURRICANE RESISTANT CONSTRUCTION AND/OR SECTION 1606 OF F.B.C. REFER TO STRUCTURAL SHEETS FOR FRAMING CONNECTION DETAILS.
15. CONTRACTOR SHALL MAKE AVAILABLE TO THE BUILDING INSPECTOR ANY INSTALLATION DOCUMENTATION NECESSARY TO VERIFY THAT ALL PRODUCTS REQUIRING PRODUCT APPROVAL PER FS 553.842 ARE IN COMPLIANCE.

KEYPLAN



3 OF 5

FLOOR PLAN- ZONE 'E'
1/8" = 1'-0"
NORTH

ELLIOTT
MARSHALL
INNES
P.A.

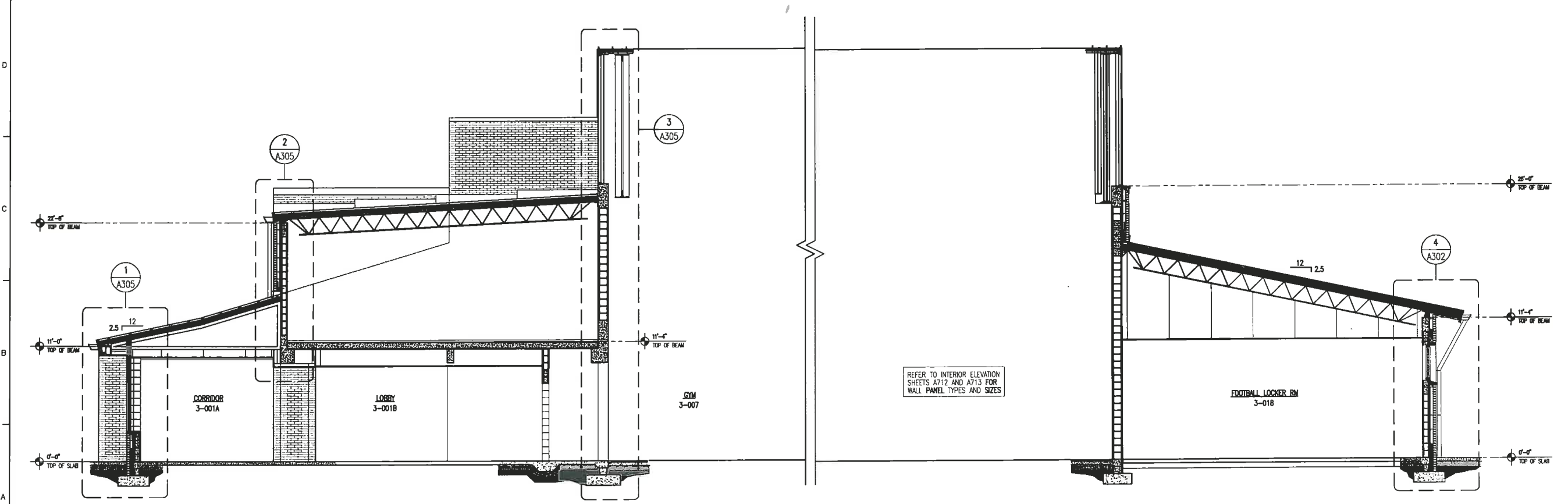
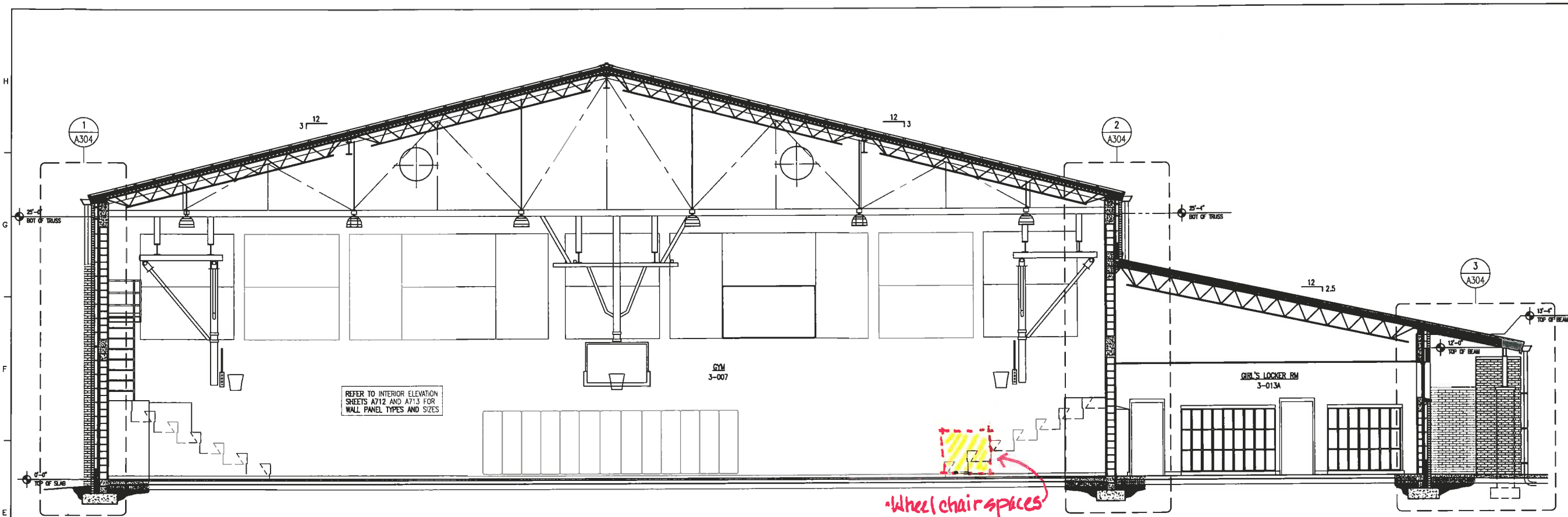


ARCHITECTURE
PLANNING
INTERIORS

LICENSE # 8
AA C000409
IB C000153

251 E. 7TH AVE.
TALLAHASSEE
FLORIDA 32303
(850) 222-7442
FAX 222-7446

NOTE:
11" x 17" SHEETS ARE PLOTTED AT 1/2
THE SCALE NOTED ON THESE DRAWINGS.



.4 OF 5

WALTON MIDDLE SCHOOL
Defuniak Springs, FL

**New Construction,
Renovation & Site
Development**

REV	DATE	DESCRIPTION

PROJECT PHASE 100% CONSTRUCTION DOCUMENTS	
DATE 23 JULY 2014	DRAWN BY SKC
PROJECT NO 56100	CHECKED BY BI

SHEET TITLE
BUILDING SECTIONS

SHEET NO A217	REV NO
-------------------------	--------

ELLIOTT
MARSHALL
INNES
P.A.

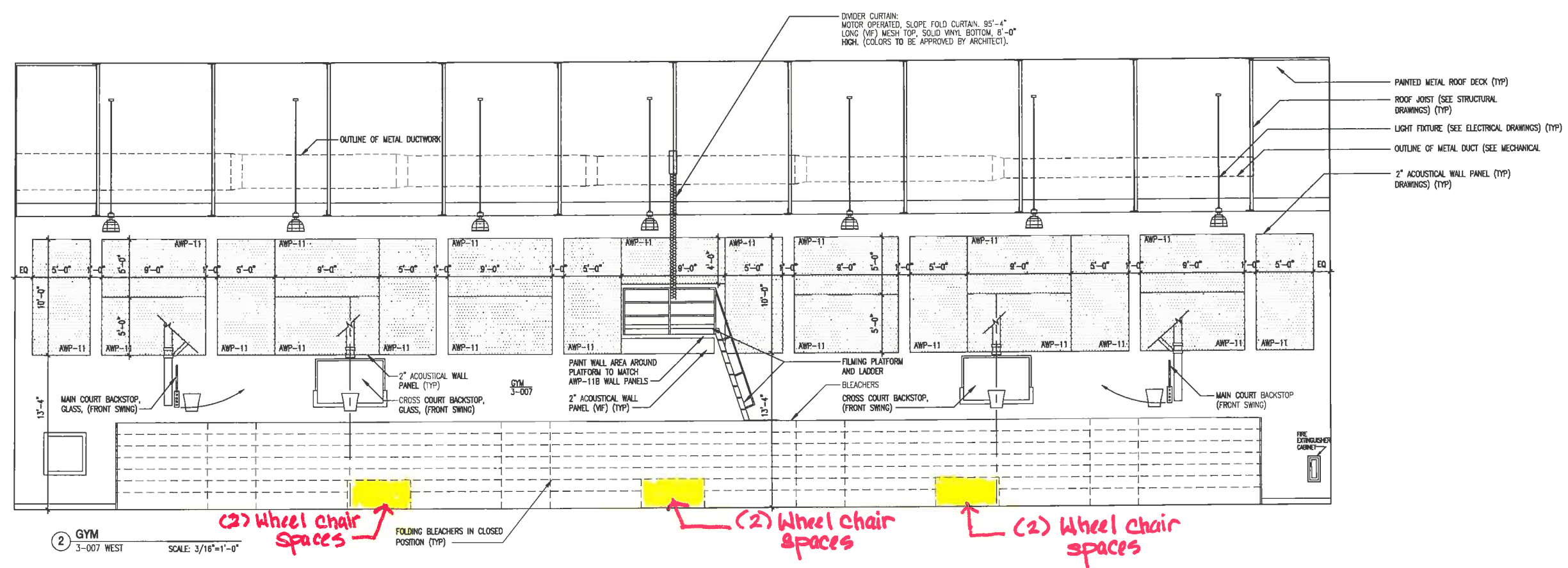
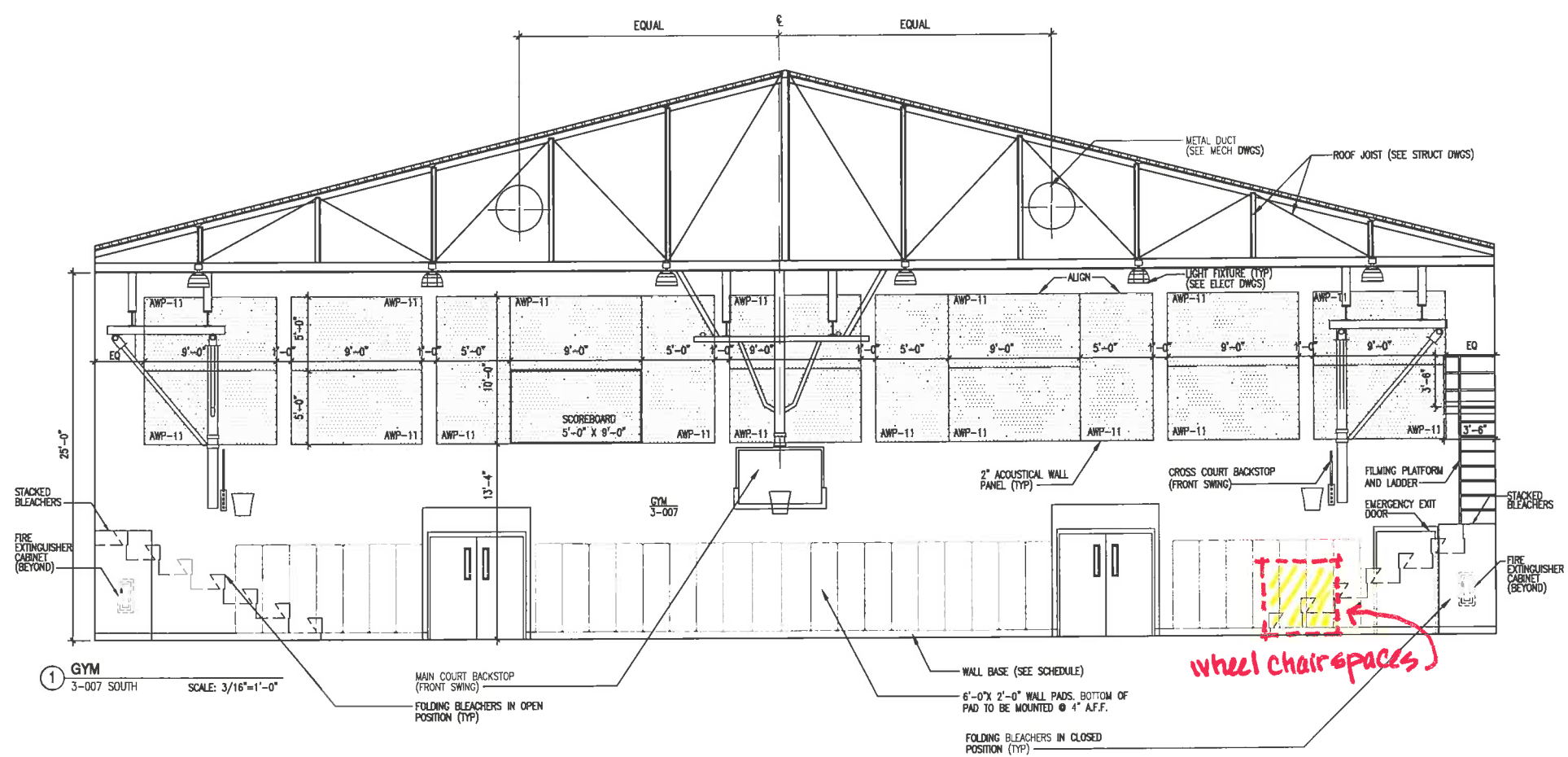
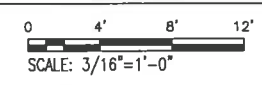


ARCHITECTURE
PLANNING
INTERIORS

LICENSE # s
AA C000409
IB C000153

251 E. 7TH AVE.
TALLAHASSEE
FLORIDA 32303
(850) 222-7442
FAX 222-7446

NOTE:
11" x 17" SHEETS ARE PLOTTED AT 1/2
THE SCALE NOTED ON THESE DRAWINGS.



WALTON MIDDLE SCHOOL
Defuniak Springs, FL

**New Construction,
Renovation & Site
Development**

REV	DATE	DESCRIPTION

PROJECT PHASE
100% CONSTRUCTION DOCUMENTS

DATE
23 JULY 2014

DRAWN BY
CMD

PROJECT NO
56100

CHECKED BY
BI

SHEET TITLE
INTERIOR ELEVATIONS

SHEET NO
A713

REV NO

. 5 OF 5