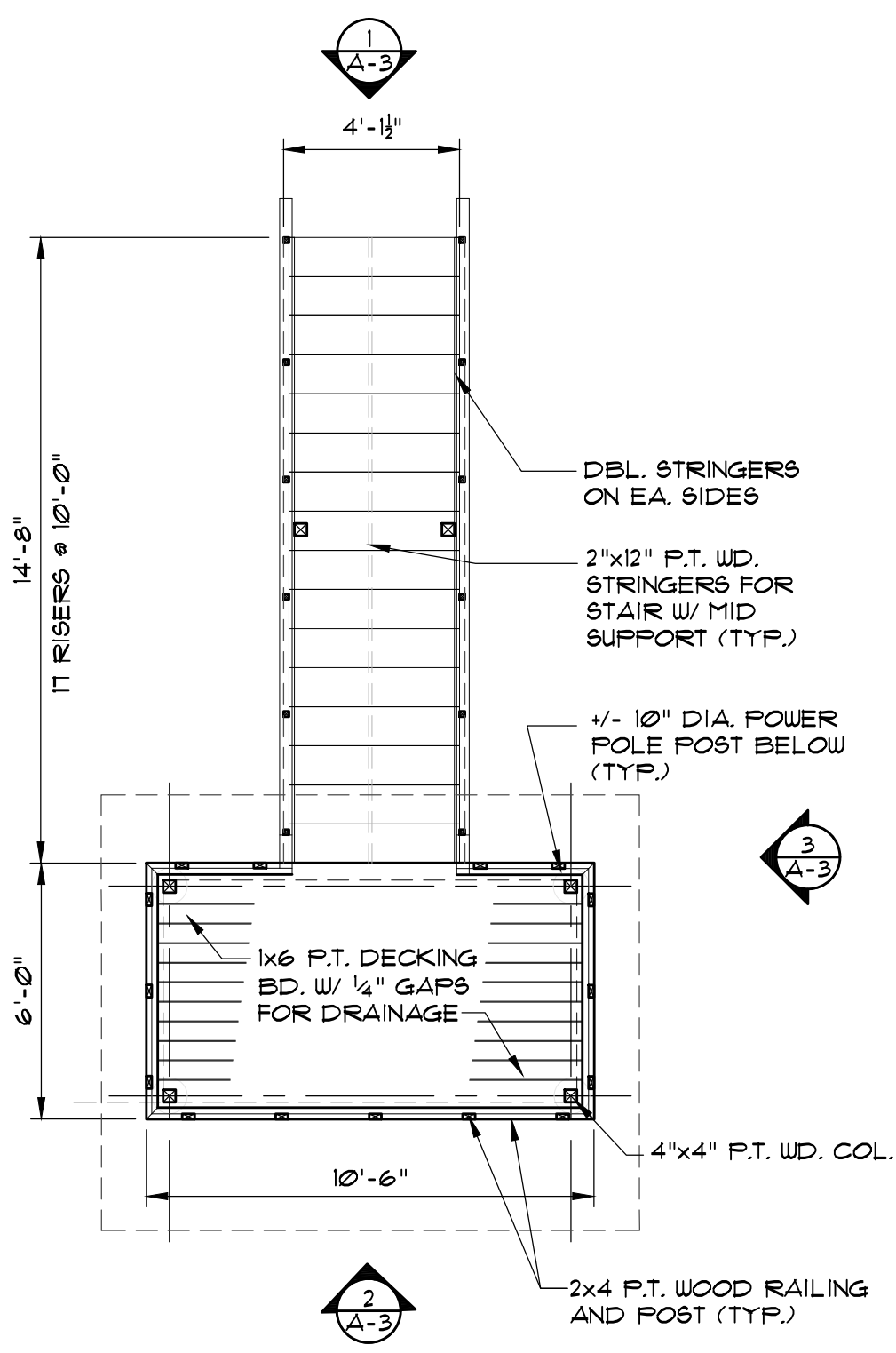
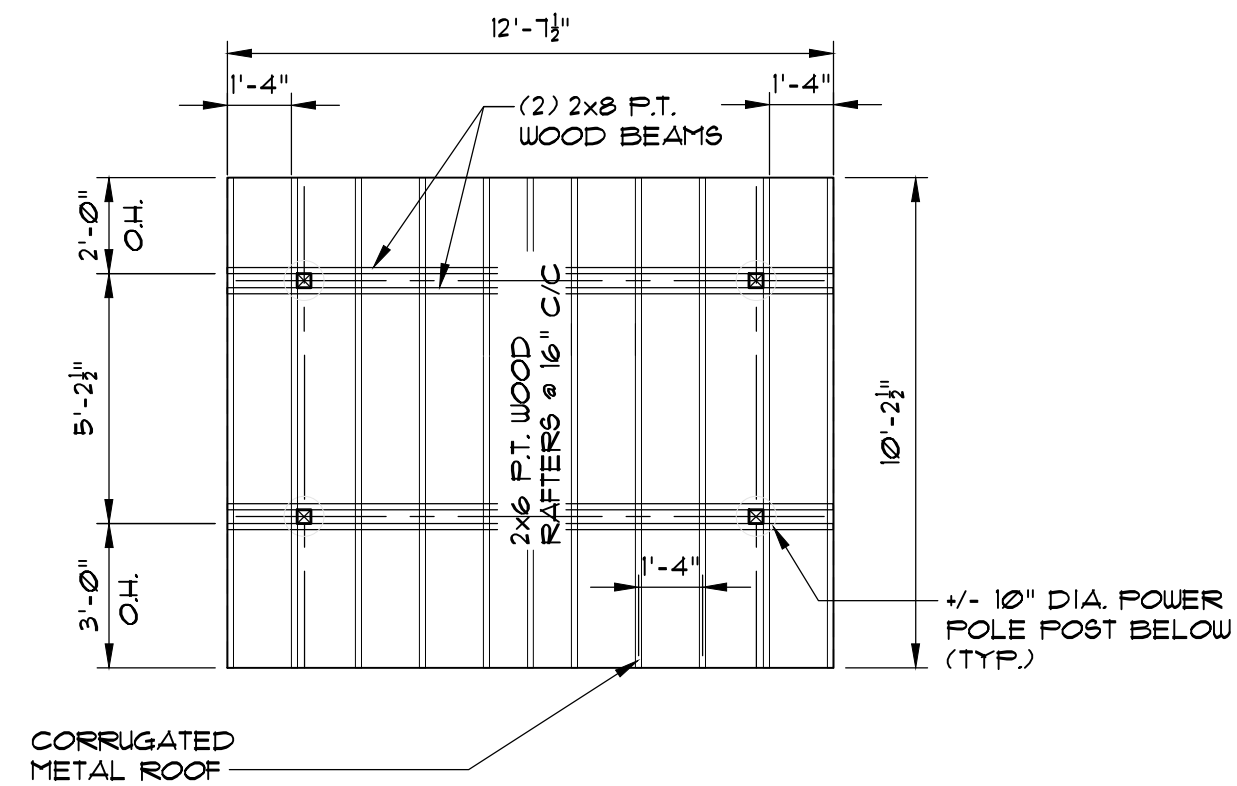


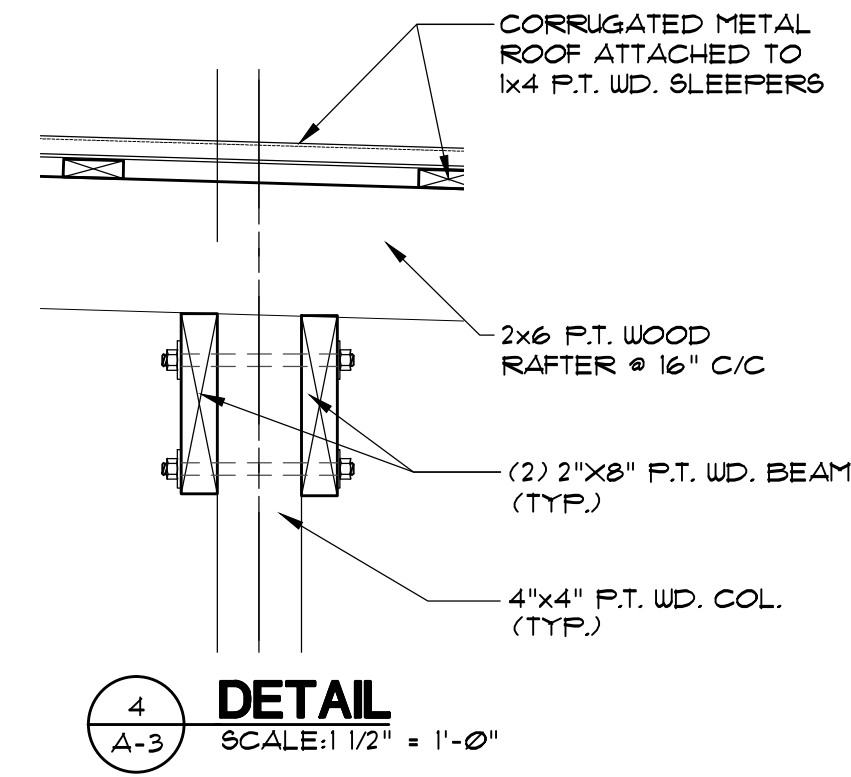
TOWER STAND 1-4 FLOOR FRAMING PLAN
SCALE: 1/4" = 1'-0"



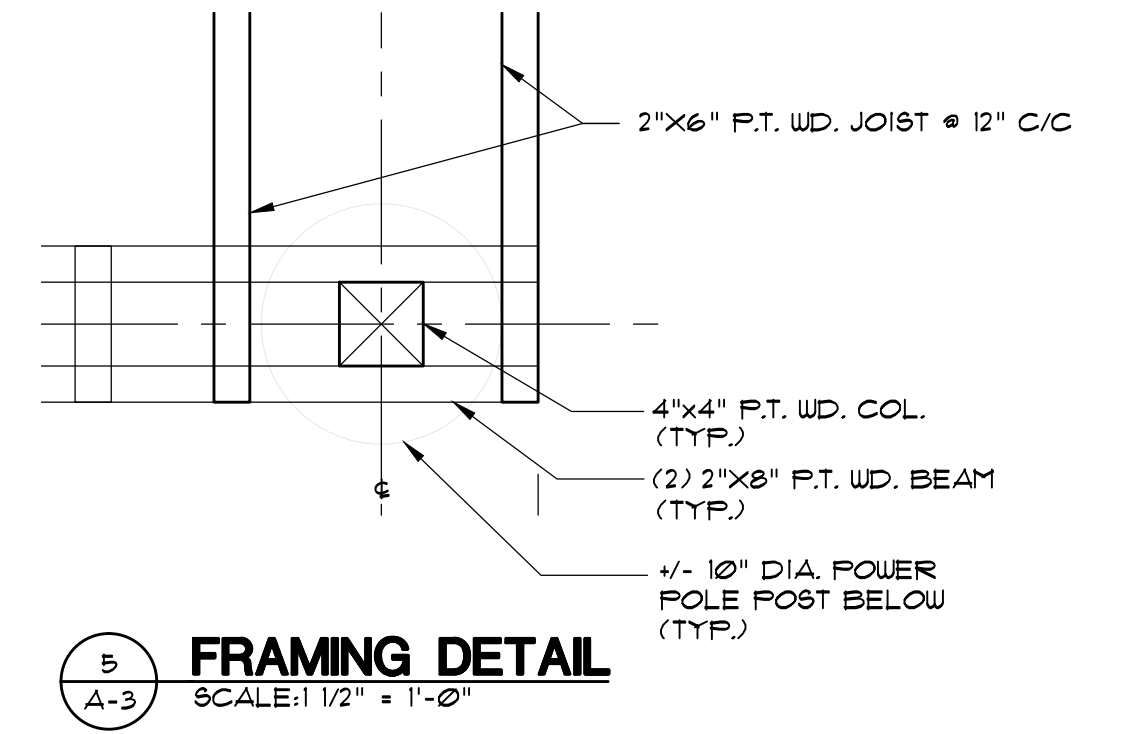
TOWER STAND 1-4 FLOOR FRAMING PLAN
SCALE: 1/4" = 1'-0"



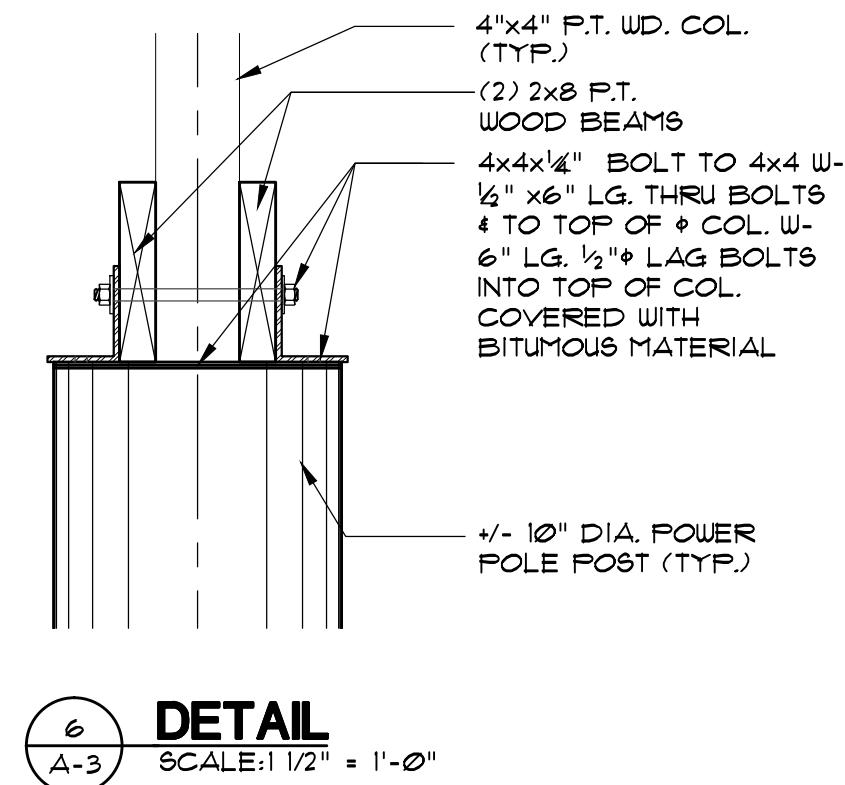
TOWER STAND 1-4 ROOF FRAMING PLAN
SCALE: 1/4" = 1'-0"



4 DETAIL
SCALE: 1/2" = 1'-0"

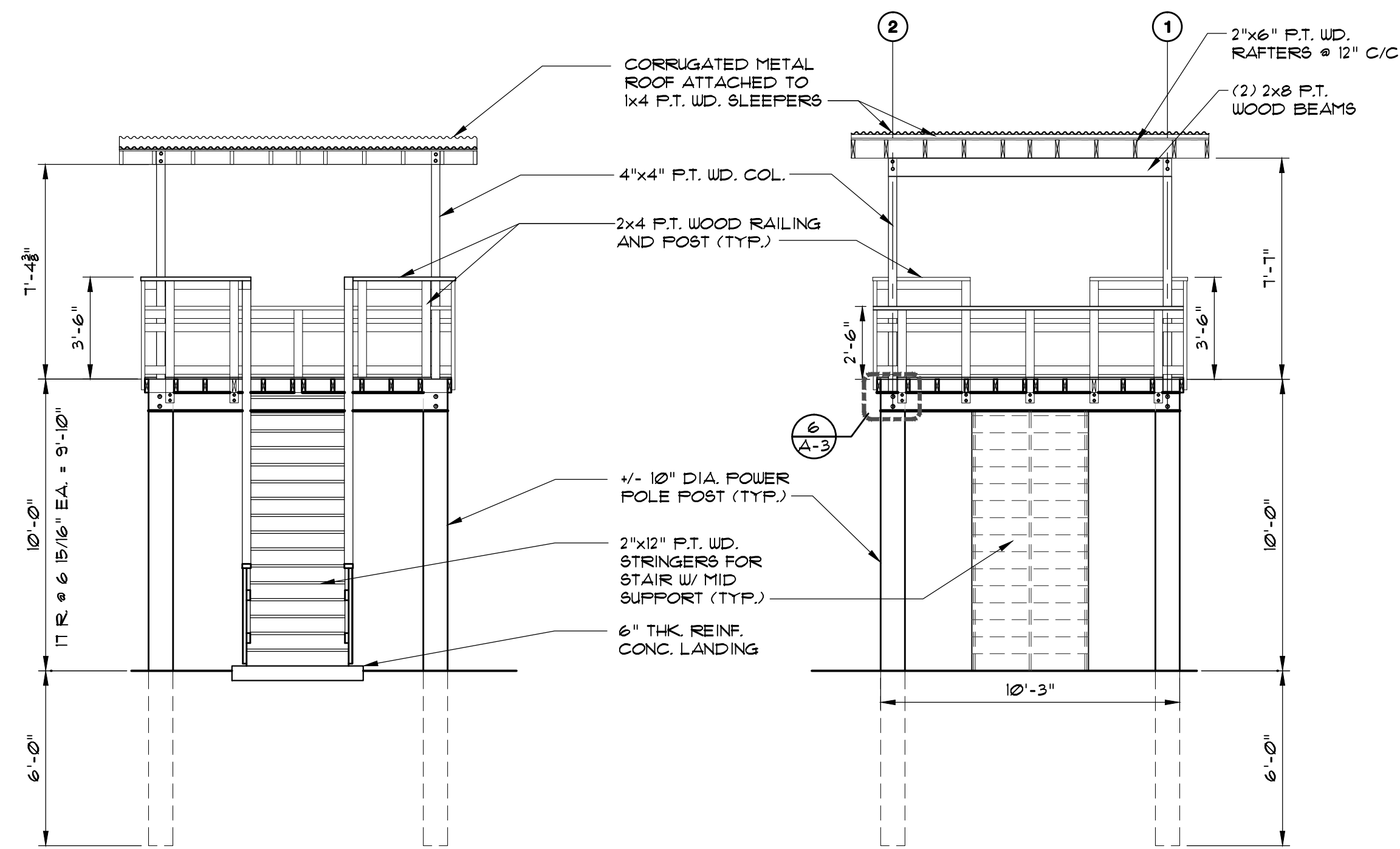


5 FRAMING DETAIL
SCALE: 1/2" = 1'-0"

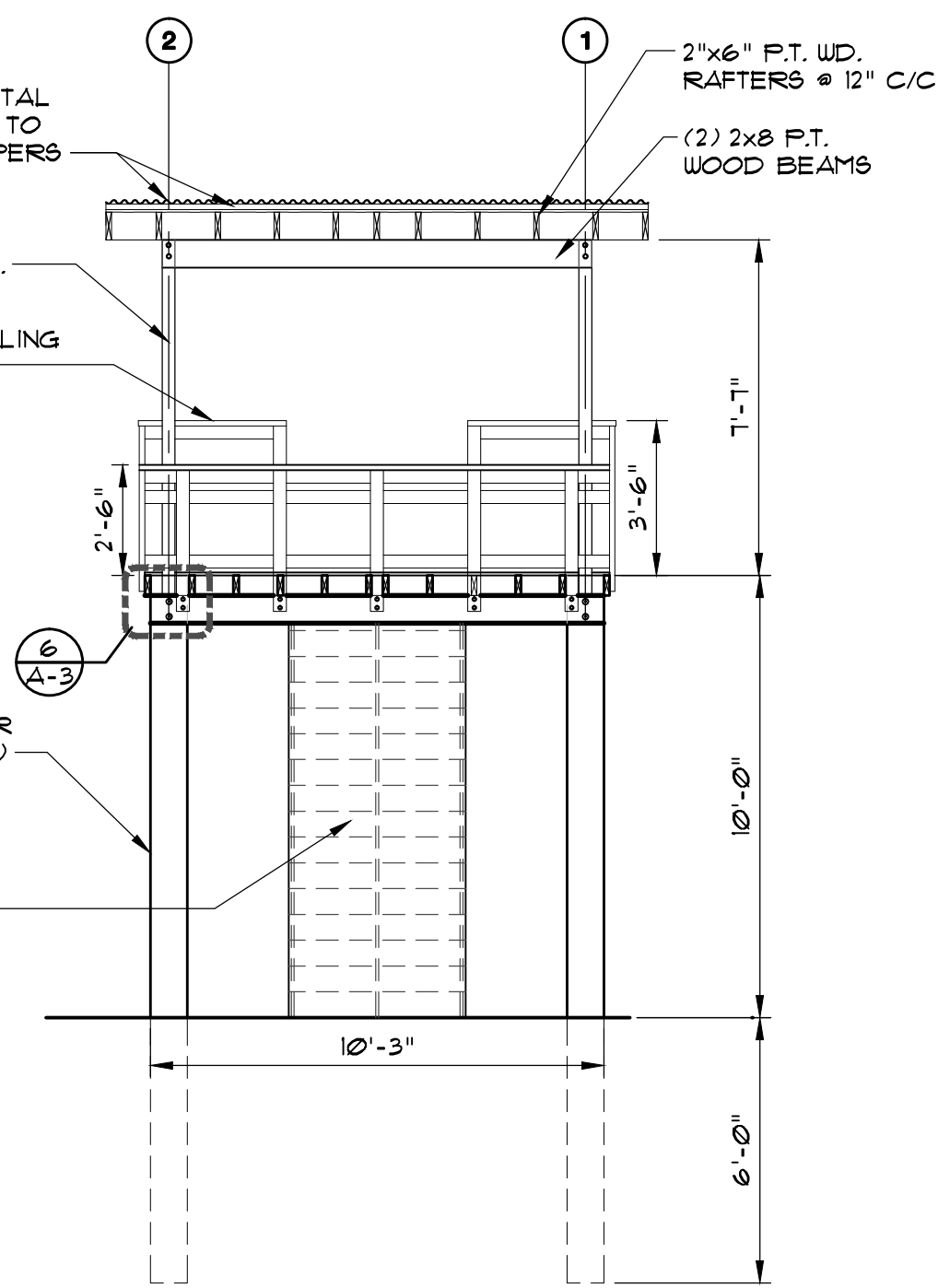


6 DETAIL
SCALE: 1/2" = 1'-0"

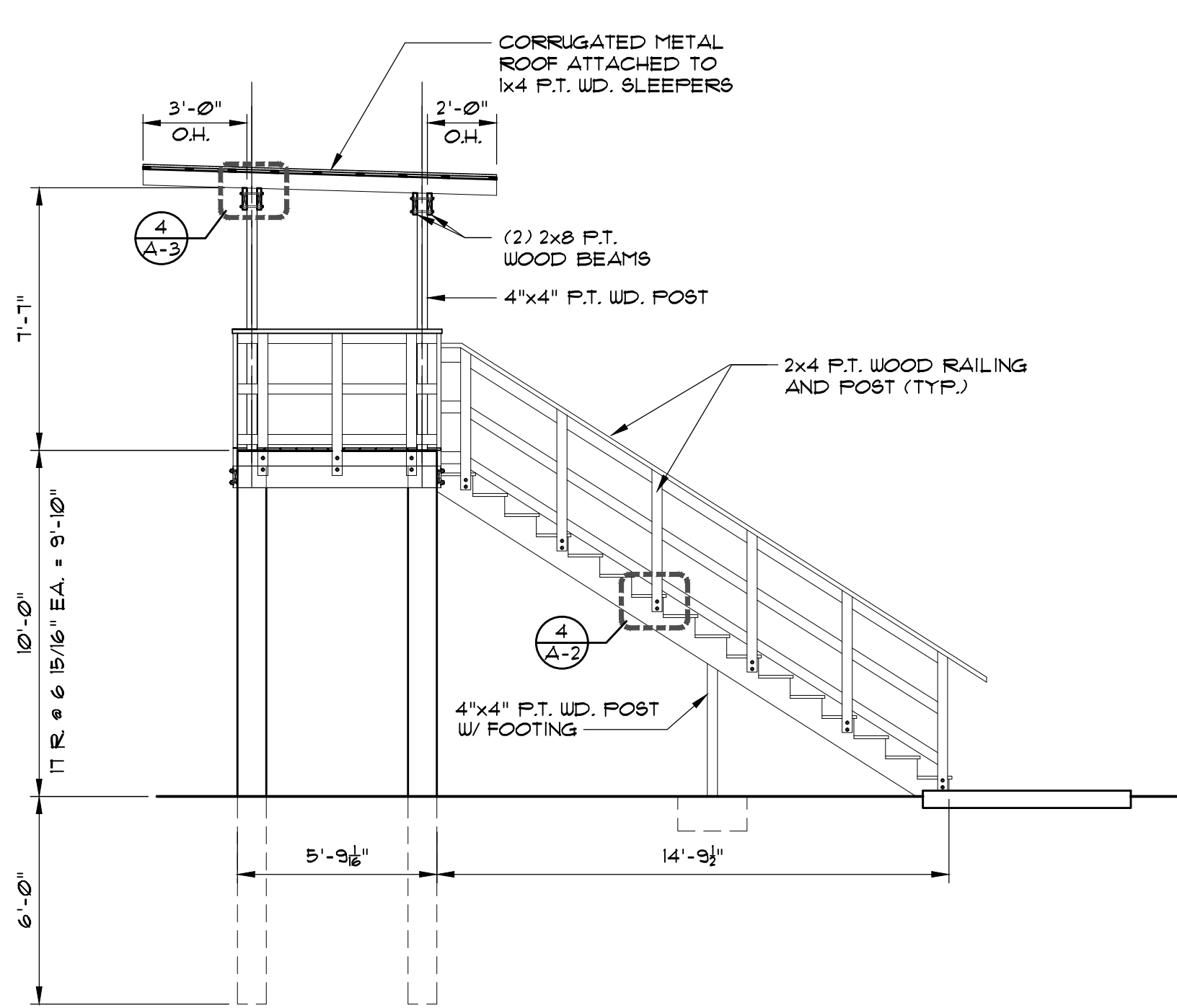
NOTE
TOWER STANDS 1-4 ARE ELEVATED SHOOTING STATIONS ONLY. THERE IS NO GROUND SHOOTING STATIONS AT TOWER STANDS 1-4



TOWER STAND 1-4 FRONT ELEVATION
SCALE: 1/4" = 1'-0"



TOWER STAND 1-4 REAR ELEVATION
SCALE: 1/4" = 1'-0"



TOWER STAND 1-4 SIDE ELEVATION
SCALE: 1/4" = 1'-0"

DATE	REVISION	DATE	REVISION

FRED M. HUMPHREY & ASSOCIATES, INC. AAC-001482 ARCHITECTS
809 S. ORLANDO AVENUE, SUITE C, WINTER PARK, FLORIDA 32789 • OFFICE: (407) 261-3200 • FAX: (407) 261-3202

SHEET TITLE
FLOOR & FRAMING PLANS & ELEVATIONS AND DETAILS

PROJECT TITLE
3-D ARCHERY COURSE, AND RANGE, OSTEEN

COMM. NUMBER
1524

ISSUED
6/8/15
DRAWN
UJA
CHECKED
FMH
SHEET NO.
A-3