

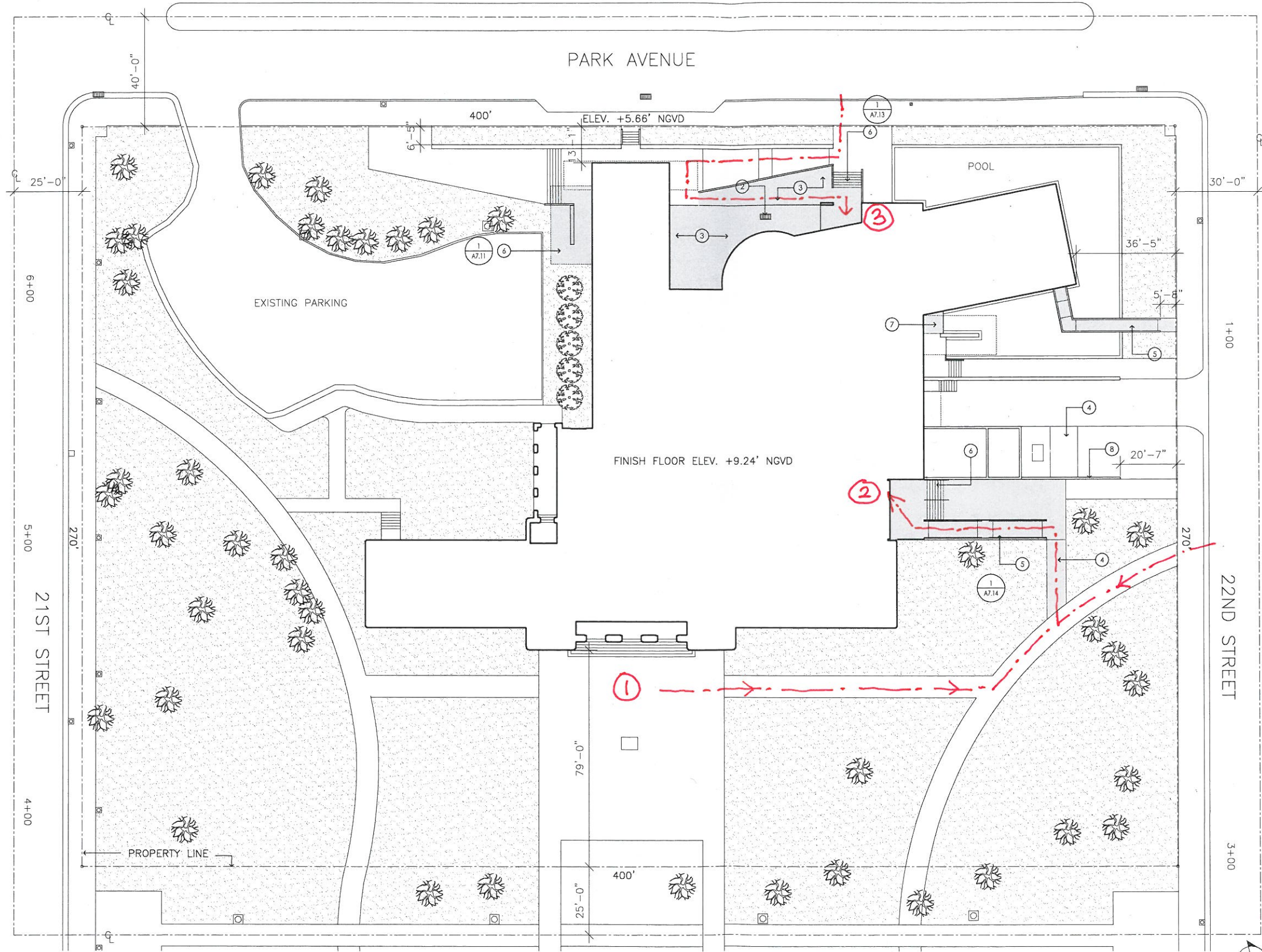
LEGEND:

NEW SITE WORK

KEYNOTES:

- ①
- ② RELOCATE STORM DRAIN
- ③ NEW CONCRETE TERRACE, SEE DETAIL AND STRUCTURAL DRAWINGS FOR ADDITIONAL SPECIFICATIONS
- ④ NEW CONCRETE WALK, SEE DETAIL AND STRUCTURAL DRAWINGS FOR ADDITIONAL SPECIFICATIONS
- ⑤ NEW CONCRETE RAMP, SEE DETAIL AND STRUCTURAL DRAWINGS FOR ADDITIONAL SPECIFICATIONS. SEE DETAILS
- ⑥ NEW CONCRETE STAIR, SEE DETAIL AND STRUCTURAL DRAWINGS FOR ADDITIONAL SPECIFICATIONS
- ⑦ NEW CONCRETE LANDING, SEE STRUCTURAL DRAWINGS. COLOR TO MATCH ADJACENT EXISTING CONCRETE.
- ⑧ NEW CMU AND PLASTER WALL

- ① MAIN ENTRY (NOT ACCESSIBLE)
- ② ADA ENTRY (NEW RAMP & INTERCOM)
- ③ EDUCATION ENTRY (EXISTING RAMP)



Architect
 DAVID GAULD ARCHITECT, PLLC
 337 Broome Street, New York, NY 10002
 Tel 212- 627-0110

Issue Date
 05/01/2015 Design Development

SCALE 1"=40'

SITE PLAN

Sheet No.

