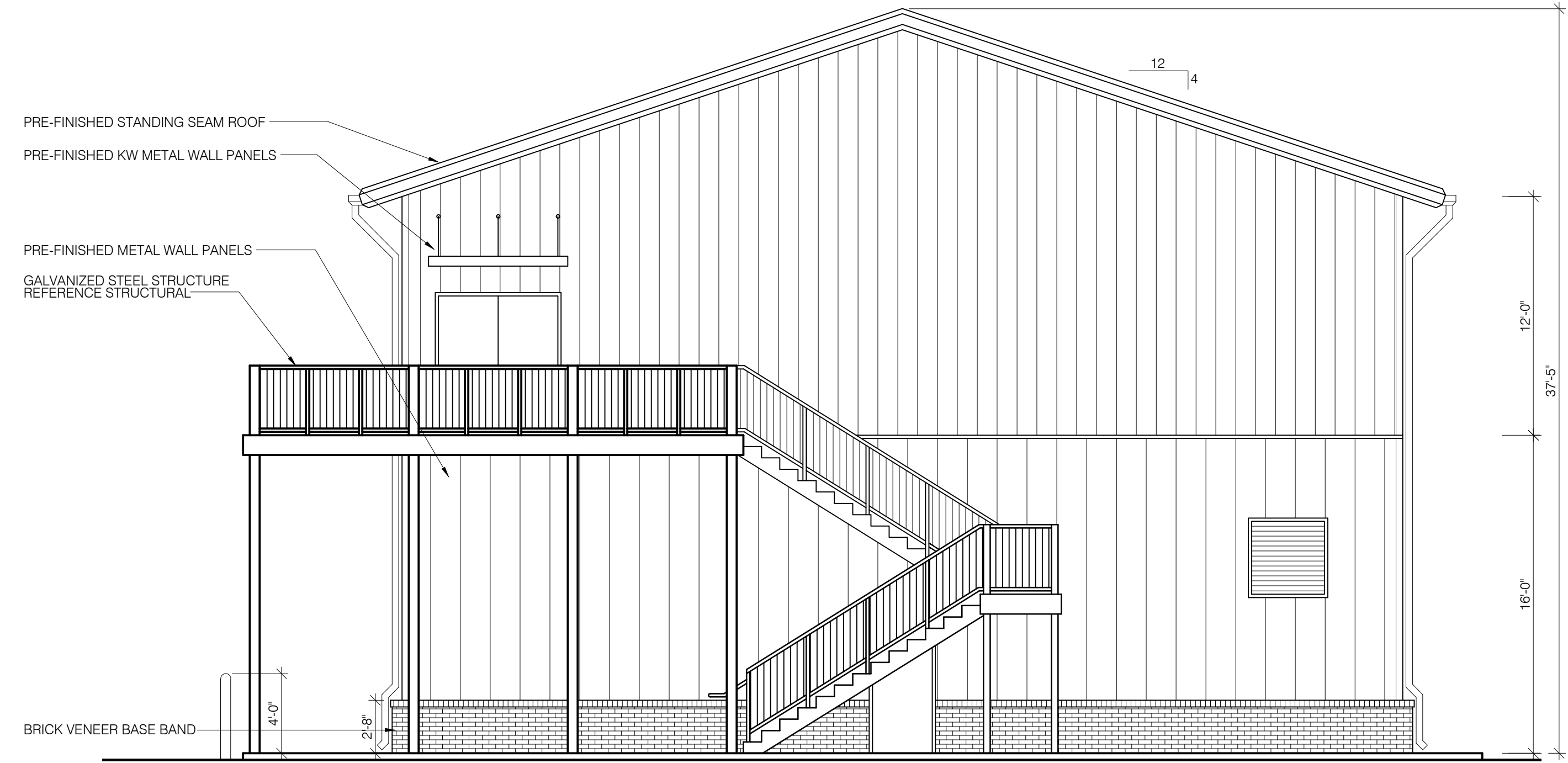
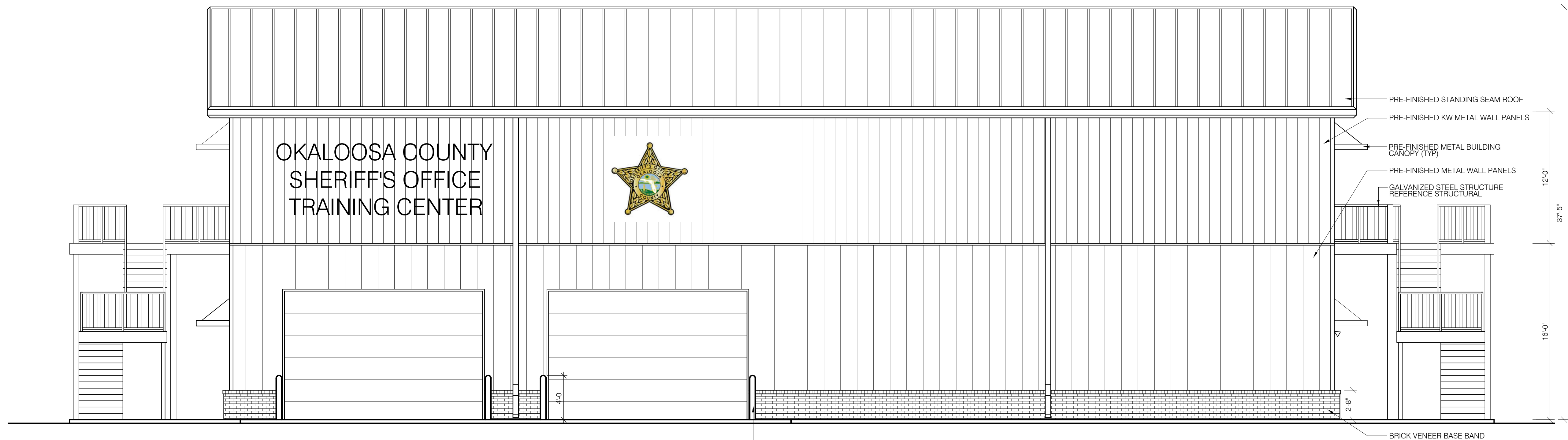


C:\USERS\JDF\ARCHITECTURE\DOCUMENTS\+ JDF ARCHITECTURE\1819 - SHERIFF TRAINING BUILDING\03 - CONSTRUCTION DOCUMENTS\02 - DRAWINGS\A2.01 - ELEVATIONS.DWG 8/29/2019 9:47 AM



1 SOUTH BUILDING ELEVATION
SCALE: 3/16" = 1'-0"



2 EAST BUILDING ELEVATION
SCALE: 3/16" = 1'-0"

6" STEEL BOLLARD FILLED W/ CONCRETE PRIME & PAINT, TYP.

AVCON, INC.
ENGINEERS & PLANNERS
320 BAYSHORE DRIVE, SUITE A
NICEVILLE, FL 32578-2425
OFFICE: (850) 678-0050
CORPORATE CERTIFICATE OF
AUTHORIZATION NUMBER: 8057
WWW.AVCONINC.COM



jdf+ architecture
JDF ARCHITECTURE, LLC
201 HOLLYWOOD BLVD, NE
FT WALTON BEACH, FLORIDA 32548
(850) 496-2166

NO.	DATE	REVISION	BY

BUILDING ELEVATIONS

OCSD TRAINING FACILITY
PREPARED FOR
OKALOOSA COUNTY SHERIFF'S DEPARTMENT

DESIGNED BY: JDC
DRAWN BY: VMB
CHECKED BY: TDN
APPROVED BY: VCL
PROJECT NO: 18.0125.04
DATE: SEPTEMBER 2019

SHEET NUMBER
A2.02

THIS DOCUMENT CONTAINS PRIVILEGED AND PROPRIETARY INFORMATION. ALL OF WHICH IS EXPRESSLY PROVIDED BY AVCON, INC. FOR USE BY THE INTENDED RECIPIENT, AND FOR A SPECIFIC PURPOSE. WITHOUT THE EXPRESS WRITTEN CONSENT OF AVCON, INC. ANY DISTRIBUTION, REPRODUCTION, OR OTHER USE OF THIS DOCUMENT, IN WHOLE OR IN PART, IS STRICTLY PROHIBITED.