



# **ADVANCED MODULE CEU'S**

**ADA; AND MAJOR CODE CHANGES**

# ACCESSIBILITY CODE

Florida accessibility code for construction is based on the Federal ADA with Florida amendments.

Gray boxes in code represent Florida changes

Waivers can only be granted to Florida changes



# EFFECTIVE DATE

- March 15, 2012
- Designers can choose to use the new Florida Accessibility Code from July 1, 2011 to the effective date.



## SCOPE SECTION 201.1

- All new or altered *public buildings and facilities, private buildings and facilities, places of public accommodation and commercial facilities* subject to this code shall comply with this code.



## SCOPE CONTINUED SECTION 201.1

- This code applies to: All areas of newly designed and newly constructed *buildings and facilities*;
- portions of altered *buildings and facilities* as determined by the ADA Standards for Accessible Design;
- *buildings and facilities* where the original construction or any former *alteration* or renovation was carried out in violation of applicable permitting law.



## SCOPE CONTINUED SECTION 202.3

- Where existing *elements* or *spaces* or common areas are altered, each altered *element space* or area shall comply with the applicable requirements of Chapter 2



## Tolerances Advisory Section 104.1.1

- Where the requirement states a specified range, such as in Section 609.4 where grab bars must be installed between 33 inches and 36 inches above the floor, the range provides an adequate tolerance and therefore no tolerance outside of the range at either end point is permitted.



## DRINKING FOUNTAINS

- **211.2 Minimum Number.** No fewer than two drinking fountains shall be provided. One drinking fountain shall comply with 602.1 through 602.6 and one drinking fountain shall comply with 602.7.
- **EXCEPTION:** Where a single drinking fountain complies with 602.1 through 602.6 and 602.7, it shall be permitted to be substituted for two separate drinking fountains.







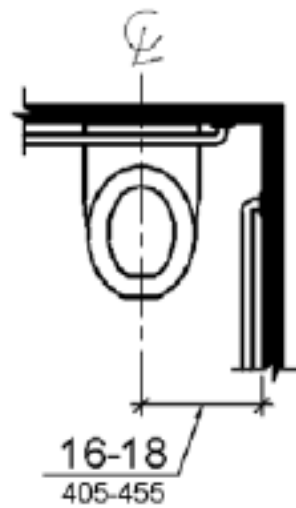
## TOILET ROOMS SECTION 213.2

- Where toilet rooms are provided, each toilet room shall comply with 603.

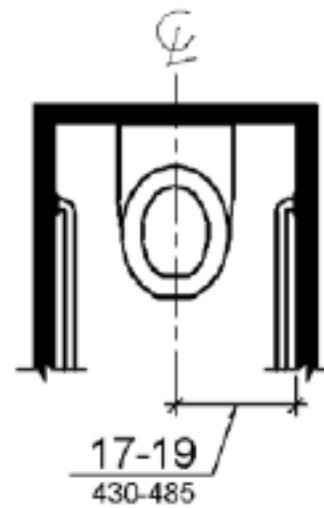


# WATER CLOSET LOCATION

## FIGURE 604.2



(a)  
wheelchair  
accessible  
water closets



(b)  
ambulatory  
accessible water  
closets



## TOILET COMPARTMENTS SECTION 213.3.1

- Where toilet compartments are provided, at least one toilet compartment shall comply with 604.8.1.
- Lavatory is still required in the stall



## URINALS

- **Advisory 605.1 General.** Stall-type urinals provide greater accessibility for a broader range of persons, including people of short stature.

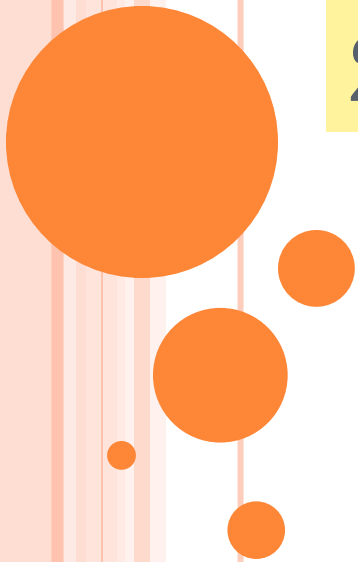


## URINALS REFERENCE 605.2

- Urinals shall be the stall-type or the wall-hung type with the rim 17 inches maximum above the finish floor or ground.
- Urinals shall be 13 1/2 inches deep minimum measured from the outer face of the urinal rim to the back of the fixture.



**SOME OF THE MAJOR  
CHANGES IN THE 2010  
PLUMBING CODE  
EFFECTIVE MARCH 15,  
2012**



- 3 year cycle
- The 2010 Florida Plumbing Code is based on the 2009 International Plumbing Code
- Each code is on a 3 year cycle for revisions





# SIGNIFICANT CHANGES

- This presentation is intended to highlight significant changes from the 2007 Florida Plumbing Code



# DEFINITIONS

THE TERM "BALL COCK" WAS DELETED AND REPLACED WITH THE TERM "FILL VALVE".

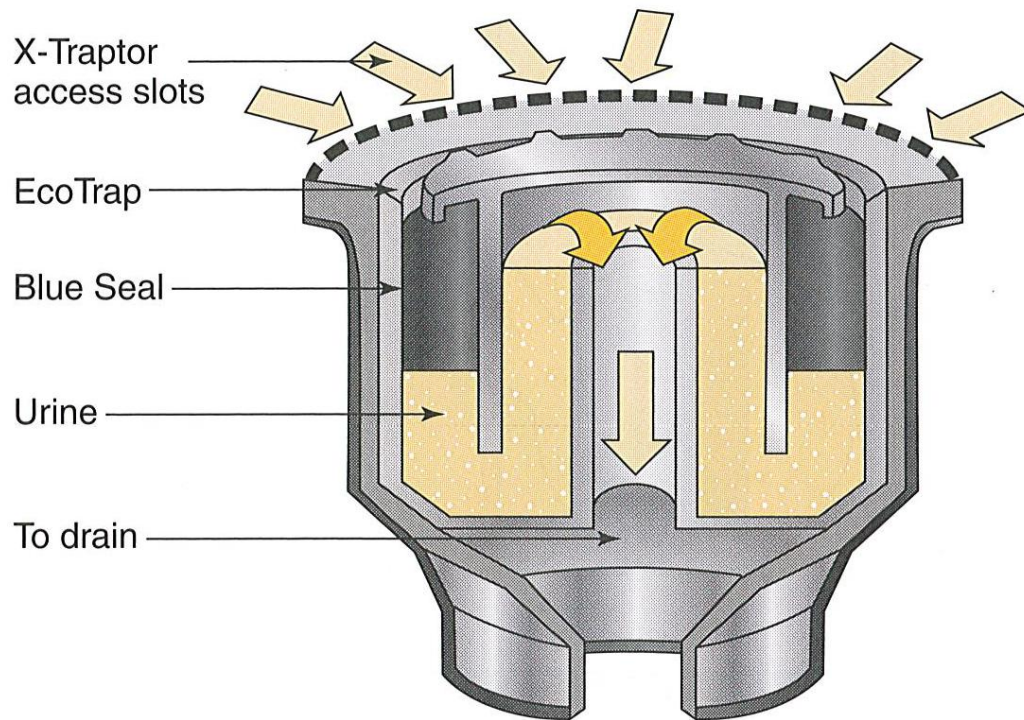
**Ball Cock (Definition)**



The term "fill valve" is the accurate terminology used to identify the device formerly called a ball cock. Courtesy Watts Regulator



# APPROVED MECHANICAL AIR ADMITANCE VALVE



Approval (urinals)





**SOME OF THE MAJOR  
CHANGES IN THE  
MECHANICAL CODE**

**EFFECTIVE MARCH 15, 20112**

# CHAPTER 2 DEFINITIONS

**AIR DISTRIBUTION SYSTEM.** Any system of ducts, plenums and air-handling *equipment* that circulates air within a space or spaces and includes systems made up of one or more air-handling units.

**BREATHING ZONE.** The region within an occupied space between planes 3 and 72 inches (76 and 1829 mm) above the floor and more than 2 feet (610 mm) from the walls of the space or from fixed air-conditioning *equipment*.

**BREATHING ZONE.** The region within an occupied space between planes 3 and 72 inches (76 and 1829 mm) above the floor and more than 2 feet (610 mm) from the walls of the space or from fixed air-conditioning *equipment*.

# CHAPTER 2 DEFINITIONS CONTINUED ADDED WORDAGE

**HOOD.** An air intake device used to capture by entrapment, impingement, adhesion or similar means, grease, moisture, heat and similar contaminants before they enter a duct system.

**Type I.** A kitchen hood for collecting and removing grease vapors and smoke. Such hoods are equipped with a fire suppression system.

**Type II.** A general kitchen hood for collecting and removing steam, vapor, heat, odors and products of combustion.



# CHAPTER 2 NEW DEFINITION

**ZONE.** One *occupiable space* or several occupiable spaces with similar *occupancy* classification (see Table 403.3), occupant density, zone air distribution effectiveness and zone primary airflow rate per unit area.



# CHAPTER 3 GENERAL REGULATIONS

- THERE ARE NUMEROUS PLACES WHERE ONE OR TWO WORD CHANGES TAKE PLACE. EXAMPLE OF THESE ARE 1.5 INCHES IS REPLACED WITH 1-1/2 INCHES. ANOTHER IS THE ADD OF A FIXTURE SUCH AS A “WATER HEATER”. REFERENCE TO FLORIDA BUILDING CODE, OR “UL” LISTINGS. THESE MINOR CHANGES WILL BE NOTED IN THIS SLIDE. PLEASE LOOK FOR THESE MINOR CHANGES.



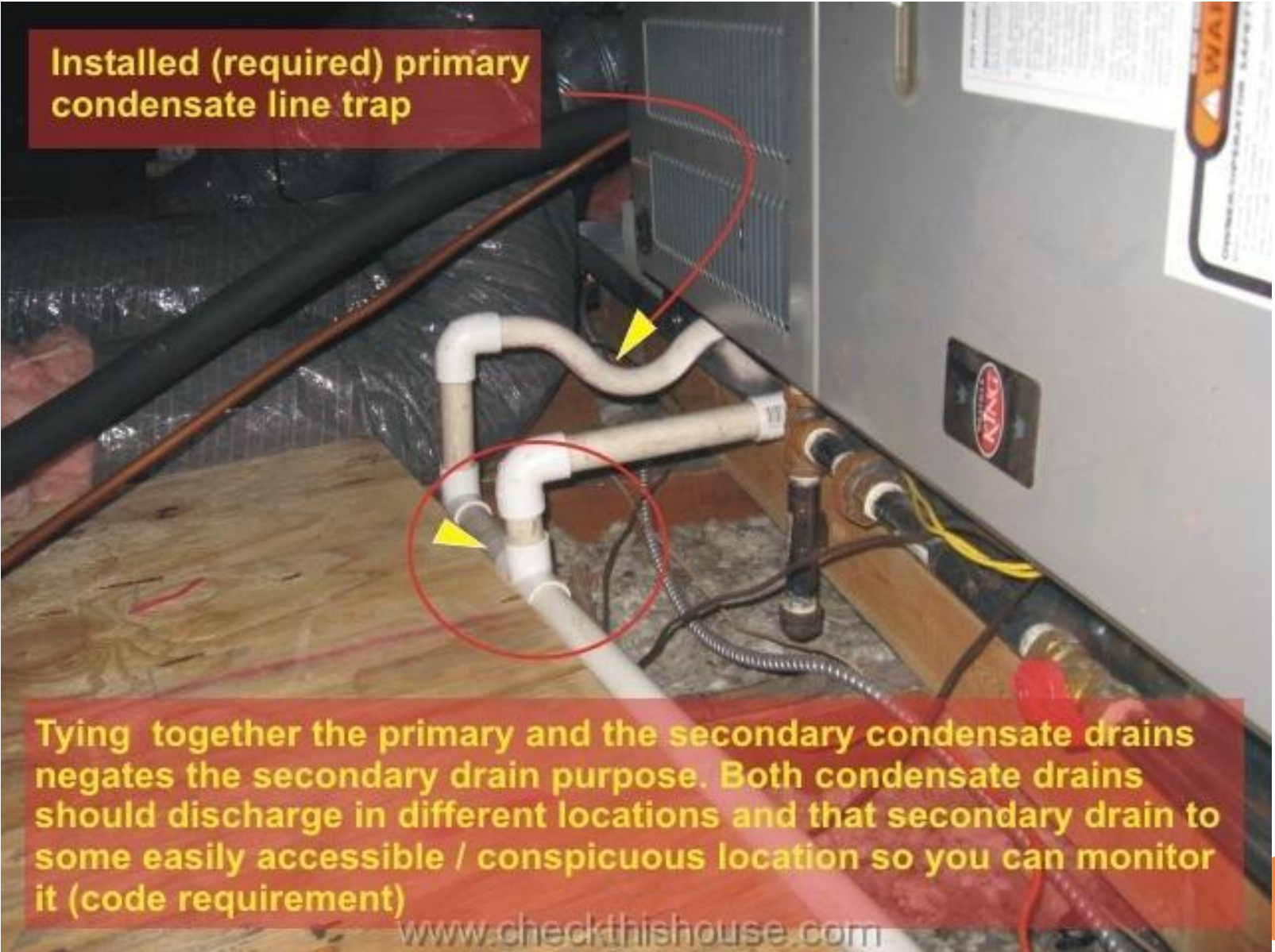


# CONDENSATE DISPOSAL

**307.2.1 Condensate disposal.** Condensate from all cooling coils and evaporators shall be conveyed from the drain pan

outlet to an *approved* place of disposal. Such piping shall maintain a minimum horizontal slope in the direction of discharge of not less than one-eighth unit vertical in 12 units horizontal (1-percent slope). Condensate shall not discharge into a street, alley or other areas so as to cause a nuisance.





**Installed (required) primary condensate line trap**

**Tying together the primary and the secondary condensate drains negates the secondary drain purpose. Both condensate drains should discharge in different locations and that secondary drain to some easily accessible / conspicuous location so you can monitor it (code requirement)**

[www.checkthishouse.com](http://www.checkthishouse.com)

# CHAPTER 4 VENTILATION

- MINOR CHANGES SUCH AS 1.5 INCHES TO 1-1/2 INCHES AND REFERENCES TO OTHER CODES WILL NOT BE NOTED. PLEASE WATCH FOR THESE MINOR CHANGES THROUGH OUT THE CODE BOOK.



# SECTION 401 CHANGES

**401.1 Scope.** This chapter shall govern the ventilation of spaces within a building intended to be occupied. Mechanical exhaust systems, including exhaust systems serving clothes dryers and cooking appliances; hazardous exhaust systems; dust, stock and refuse conveyor systems; subslab soil exhaust systems; smoke control systems; energy recovery ventilation systems and other systems specified in Section 502 shall comply with Chapter 5.

**401.2 Ventilation required.** Every occupied space shall be ventilated by natural means in accordance with Section 402 or by mechanical means in accordance with Section 403.

■ In lieu of compliance with Section 403.1 through Section 403.3, mechanical ventilation may be implemented in compliance with ASHRAE 62.1.



# ADDED WORDAGE TO THIS SECTIONS

**403.7 Balancing.** The *ventilation air* distribution system shall be provided with means to adjust the system to achieve at least the minimum ventilation airflow rate as required by Sections 403.3 and 403.4. Ventilation systems shall be balanced by an *approved* method. Such balancing shall verify that the ventilation system is capable of supplying and exhausting the airflow rates required by Sections 403.3 and 403.4.

**404.2 Minimum ventilation.** Automatic operation of the system shall not reduce the ventilation airflow rate below 0.05 cfm per square foot ( $0.00025 \text{ m}^3/\text{s} \cdot \text{m}^2$ ) of the floor area and the system shall be capable of producing a ventilation airflow rate of 0.75 cfm per square foot ( $0.0038 \text{ m}^3/\text{s} \cdot \text{m}^2$ ) of floor area.



# ○ CHAPTER 5 EXHAUST SYSTEMS



# CHAPTER 5 SECTION 501

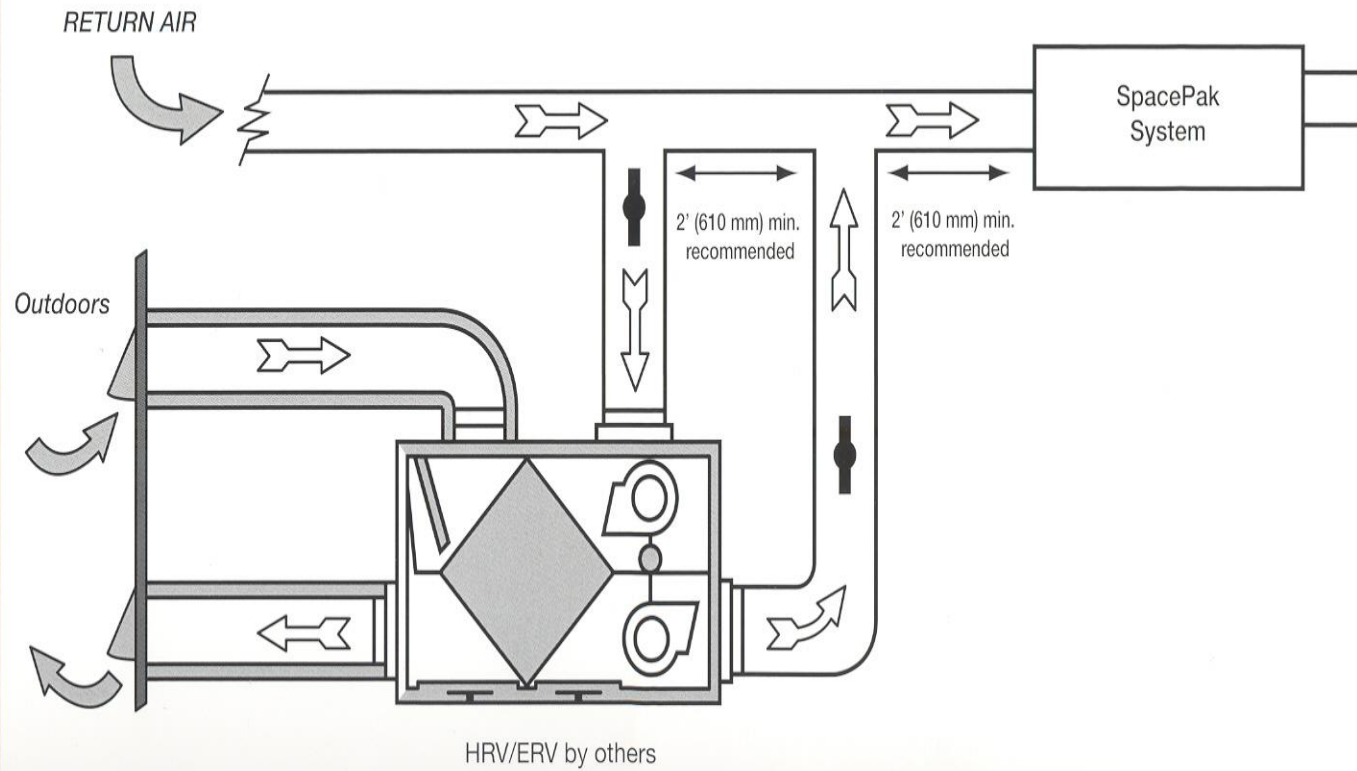
## WORD CHANGES

### SECTION 501 GENERAL

**501.1 Scope.** This chapter shall govern the design, construction and installation of mechanical exhaust systems, including exhaust systems serving clothes dryers and cooking appliances; hazardous exhaust systems; dust, stock and refuse conveyor systems; subslab soil exhaust systems; smoke control systems; energy recovery ventilation systems and other systems specified in Section 502.



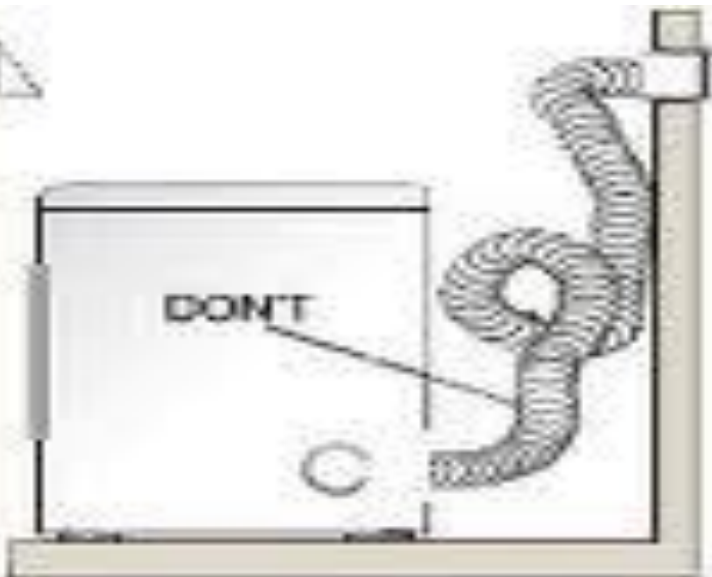
## TYPICAL HRV/ERV SPACEPAK SYSTEM INSTALLATION



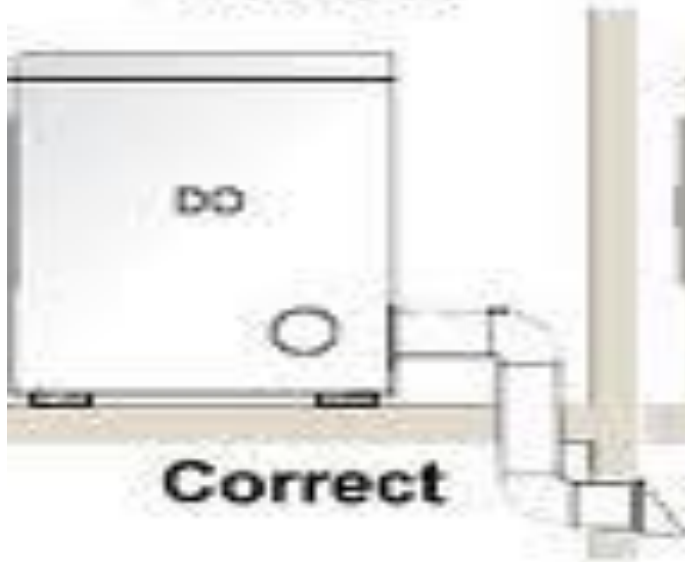




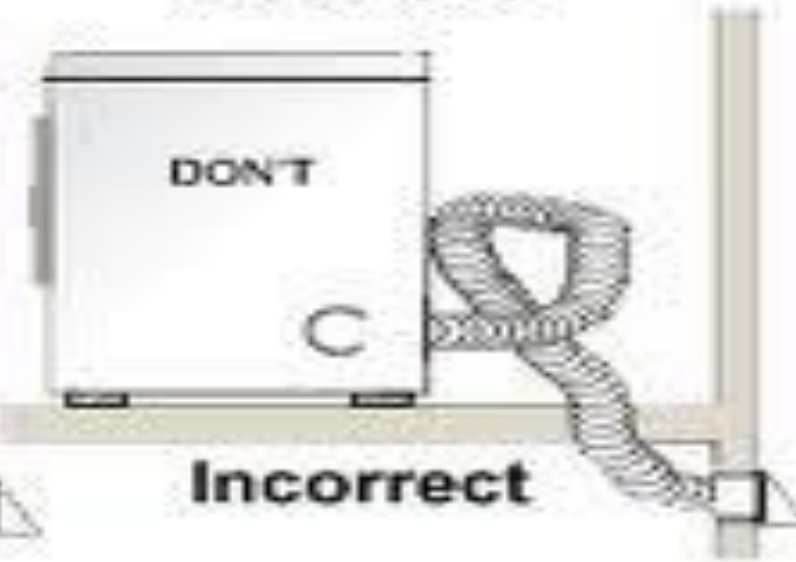
**Correct**



**Incorrect**



**Correct**



**Incorrect**

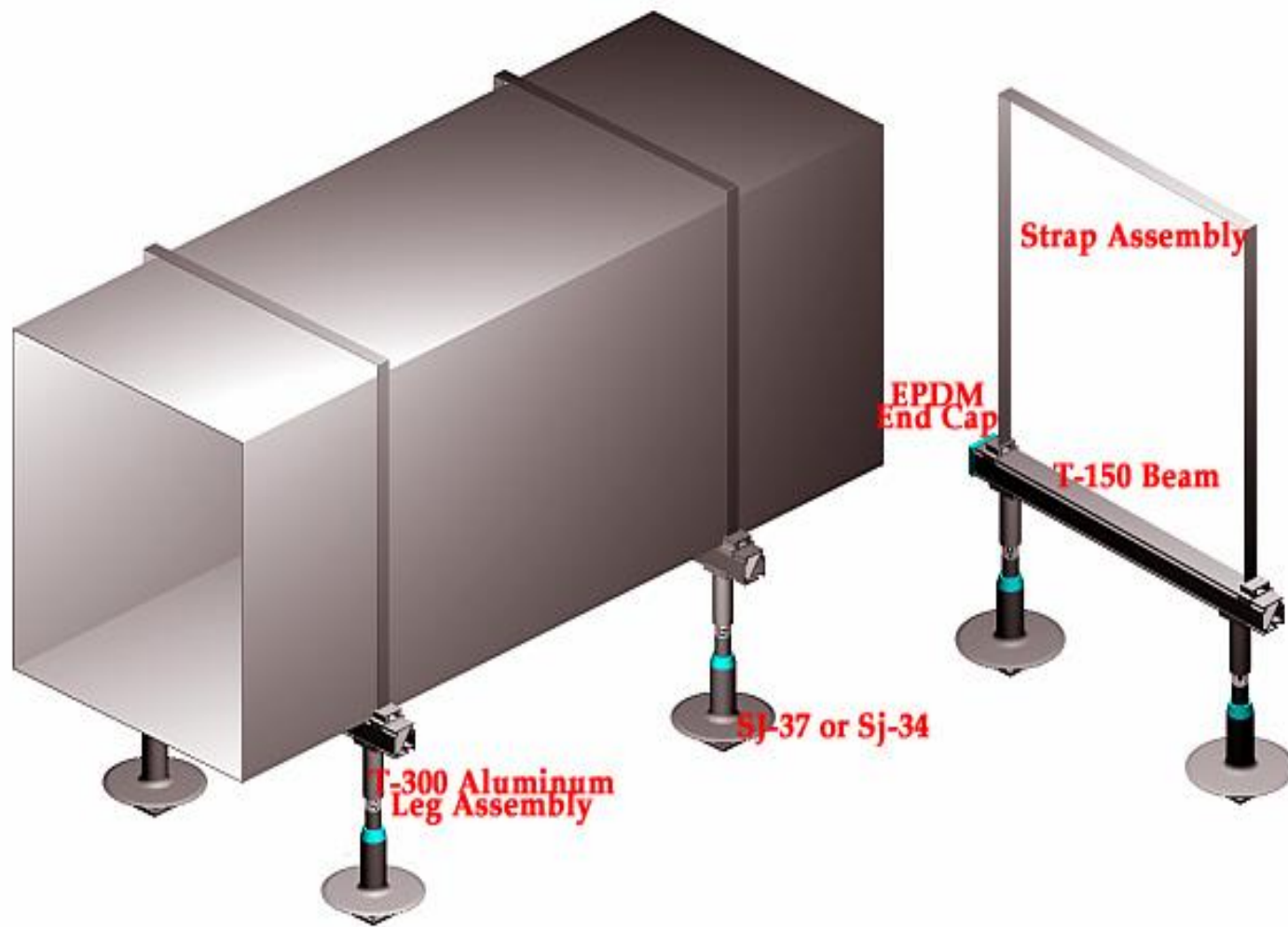


# SECTIONS 506.3.3 SUPPORTS & 506.3.4 AIR VELOCITY

**506.3.3 Grease duct supports.** Grease duct bracing and supports shall be of noncombustible material securely attached to the structure and designed to carry gravity and seismic loads within the stress limitations of the *Florida Building Code, Building*. Bolts, screws, rivets and other mechanical fasteners shall not penetrate duct walls.

**506.3.4 Air velocity.** Grease duct systems serving a Type I hood shall be designed and installed to provide an air velocity within the duct system of not less than 1,500 feet per minute (7.6 m/s) and not greater than 2,500 feet per minute (13 m/s).





# EXTRA HEAVY DUTY TYPE I

**507.2.4 Extra-heavy-duty.** Type I hoods for use over *extra-heavy-duty cooking appliances* shall not cover *heavy-, medium- or light-duty appliances*. Such hoods shall discharge to an exhaust system that is independent of other exhaust systems.



# CLEARANCE FOR TYPE 1 HOODS

**507.9 Clearances for Type I hood.** A Type I hood shall be installed with a *clearance* to combustibles of not less than 18 inches (457 mm).

**Exception:** *Clearance* shall not be required from gypsum wallboard or  $\frac{1}{2}$ -inch (12.7 mm) or thicker cementitious wallboard attached to noncombustible structures provided that a smooth, cleanable, nonabsorbent and noncombustible material is installed between the hood and the gypsum or cementitious wallboard over an area extending not less than 18 inches (457 mm) in all directions from the hood.



# SECTION 504.5 LANGUAGE CHANGES

**504.5 Makeup air.** Installations exhausting more than 200 cfm (0.09m<sup>3</sup>/s) shall be provided with *makeup air*. Where a closet is designed for the installation of a clothes dryer, an opening having an area of not less than 100 square inches (0.0645 m<sup>2</sup>) shall be provided in the closet enclosure or *makeup air* shall be provided by other *approved* means.

**504.6 Domestic clothes dryer ducts.** Exhaust ducts for domestic clothes dryers shall conform to the requirements of Sections 504.6.1 through 504.6.7.

**504.6.1 Material and size.** Exhaust ducts shall have a smooth interior finish and shall be constructed of metal a minimum 0.016 inch (0.4 mm) thick. The exhaust duct size shall be 4 inches (102 mm) nominal in diameter.

**504.6.2 Duct installation.** Exhaust ducts shall be supported at 4-foot (1219 mm) intervals and secured in place. The insert end of the duct shall extend into the adjoining duct or fitting in the direction of airflow. Ducts shall not be joined with screws or similar fasteners that protrude into the inside of the duct.



# COMMERCIAL MAKEUP AIRKITCHEN

## SECTION 508 COMMERCIAL KITCHEN MAKEUP AIR

**508.1 Makeup air.** *Makeup air* shall be supplied during the operation of commercial kitchen exhaust systems that are provided for *commercial cooking appliances*. The amount of *makeup air* supplied to the building from all sources shall be approximately equal to the amount of *exhaust air* for all exhaust systems for the building. The *makeup air* shall not reduce the effectiveness of the exhaust system. *Makeup air* shall be provided by gravity or mechanical means or both. Mechanical *makeup air* systems shall be automatically controlled to start and operate simultaneously with the exhaust system. *Makeup air* intake opening locations shall comply with Section 401.4.

**508.1.1 Makeup air temperature.** Reserved.









○ REMEMBER; THE  
NUMBER SEQUENCE ARE  
NOT THE SAME, SO YOU  
WILL NEED TO REVIEW  
THE SECTIONS CLOSELY.



***THE END***

