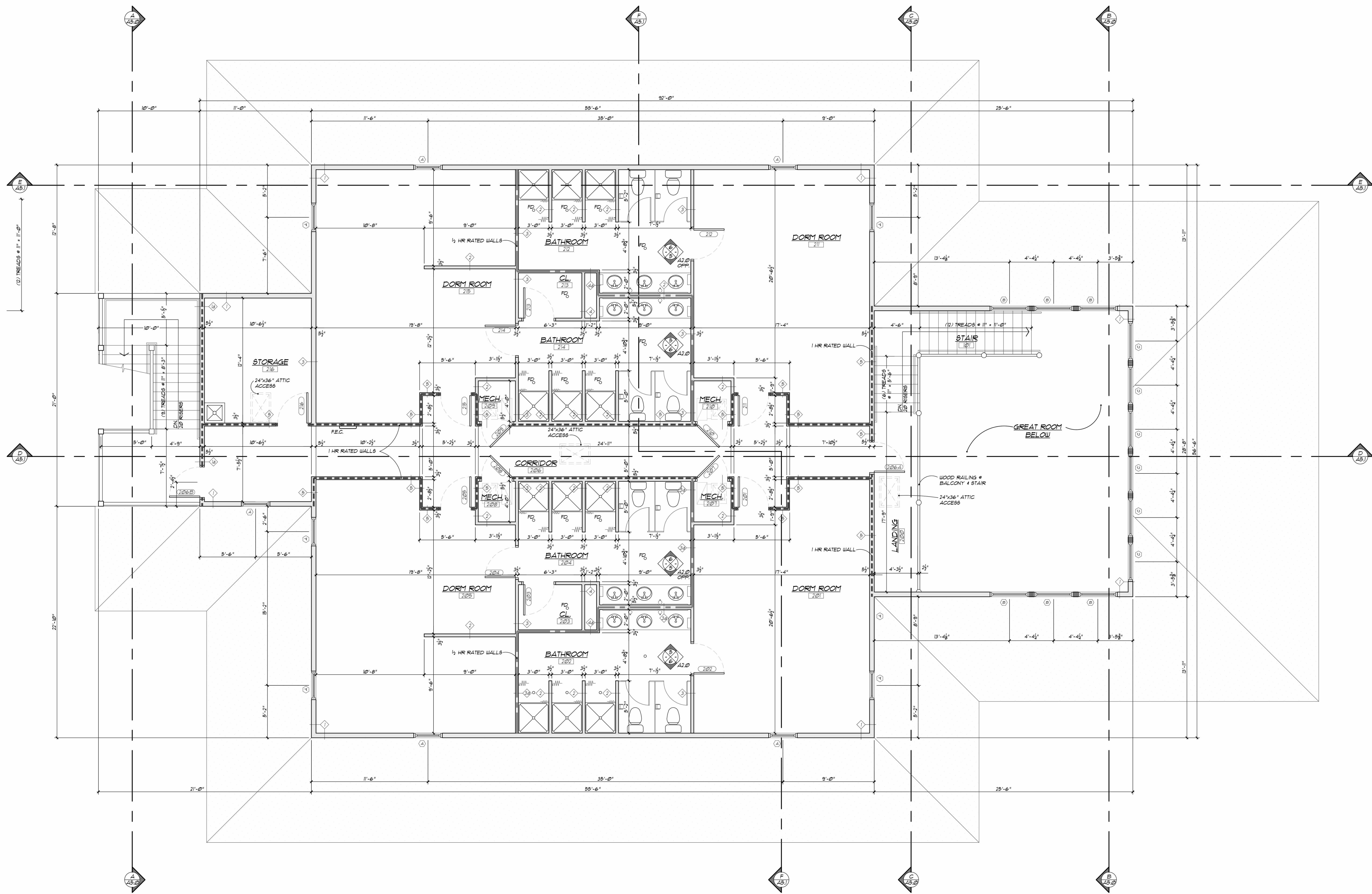




**Proposed New Dorm for  
Young Life - Southwind**  
18115 SE 95th Street Rd., Ocklawaha, FL 32179

WALL TYPES LEGEND					
<p>◇ TYPICAL EXTERIOR WALL SIDING (TYPE VARIES - REFER TO ELEVATION): AIR INFILTRATION BARRIER 1" EXTERIOR GRADE SHEATHING 2x6 STUDS @ 16" O.C. R-21 INSULATION 1/2" GYPSUM BOARD VAPOR BARRIER PRIMER (2 COATS)</p>		<p>◇ TYPICAL SOUND ATTENUATION WALL (1/2 HOUR FIRE RATING): 1/2" GYPSUM BOARD 2x STUDS @ 16" O.C. (SEE PLAN FOR SIZE) 3/4" SOUND ATTENUATION BATT (2) LAYERS 1/2" GYPSUM BOARD</p>		<p>◇ TYPICAL SHAFT WALL - UL DESIGN 514 (OR EQUIV.): (1/2 HOUR FIRE RATING) 1/2" GYPSUM BOARD 2x4 STUDS @ 16" O.C. 1/2" GYPSUM BOARD</p>	
<p>◇ TYPICAL EXTERIOR WALL - UL DESIGN 410/519 (OR EQUIV.): (1 HOUR FIRE RATING) 1/4" THICK FIBER CEMENT SIDING AIR INFILTRATION BARRIER 1/2" TYPE X EXTERIOR GYPSUM SHEATHING 2x6 STUDS @ 16" O.C. R-21 INSULATION 1/2" GYPSUM BOARD VAPOR BARRIER PRIMER (2 COATS)</p>		<p>◇ TYPICAL SOUND ATTENUATION WALL - UL DESIGN 410/414 (OR EQUIV.): (1/2 HOUR FIRE RATING) 1/2" GYPSUM BOARD 2x STUDS @ 16" O.C. (SEE PLAN FOR SIZE) 3/4" SOUND ATTENUATION BATT (2) LAYERS 1/2" GYPSUM BOARD</p>		<p>◇ FIRE SEPARATION BARRIER - 1 HOUR RATING - U302 1/2" TYPE X GYPSUM BOARD 1/2" EXTERIOR GRADE SHEATHING 2x STUDS @ 16" O.C. (SEE PLAN FOR SIZE) 3/4" SOUND ATTENUATION BATT (2) LAYERS TYPE X 1/2" GYPSUM BOARD</p>	
<p>◇ TYPICAL INTERIOR WALL 1/2" GYPSUM BOARD 2x STUDS @ 16" O.C. (SEE PLAN FOR SIZE) 1/2" GYPSUM BOARD</p>		<p>◇ TYPICAL SHAFT WALL 1/2" GYPSUM BOARD 2x4 STUDS @ 16" O.C.</p>			

NOTES:  
1. USE MOISTURE RESISTANT GYPSUM BOARD IN ALL BATHROOMS  
2. SEE ROOM FINISH SCHEDULE FOR WALL FINISHES



**UPPER LEVEL FLOOR PLAN**  
1/4" = 1'-0" NORTH

ARCHITECT OF RECORD:  
Dean DeKryger - License # ARS7456

DRAWN BY:  
K. Taylor, B. King

DATE ISSUED:  
November 17, 2015 Permits and Construction

SHEET NUMBER:  
**A1.1**

PROJECT NUMBER:  
15101