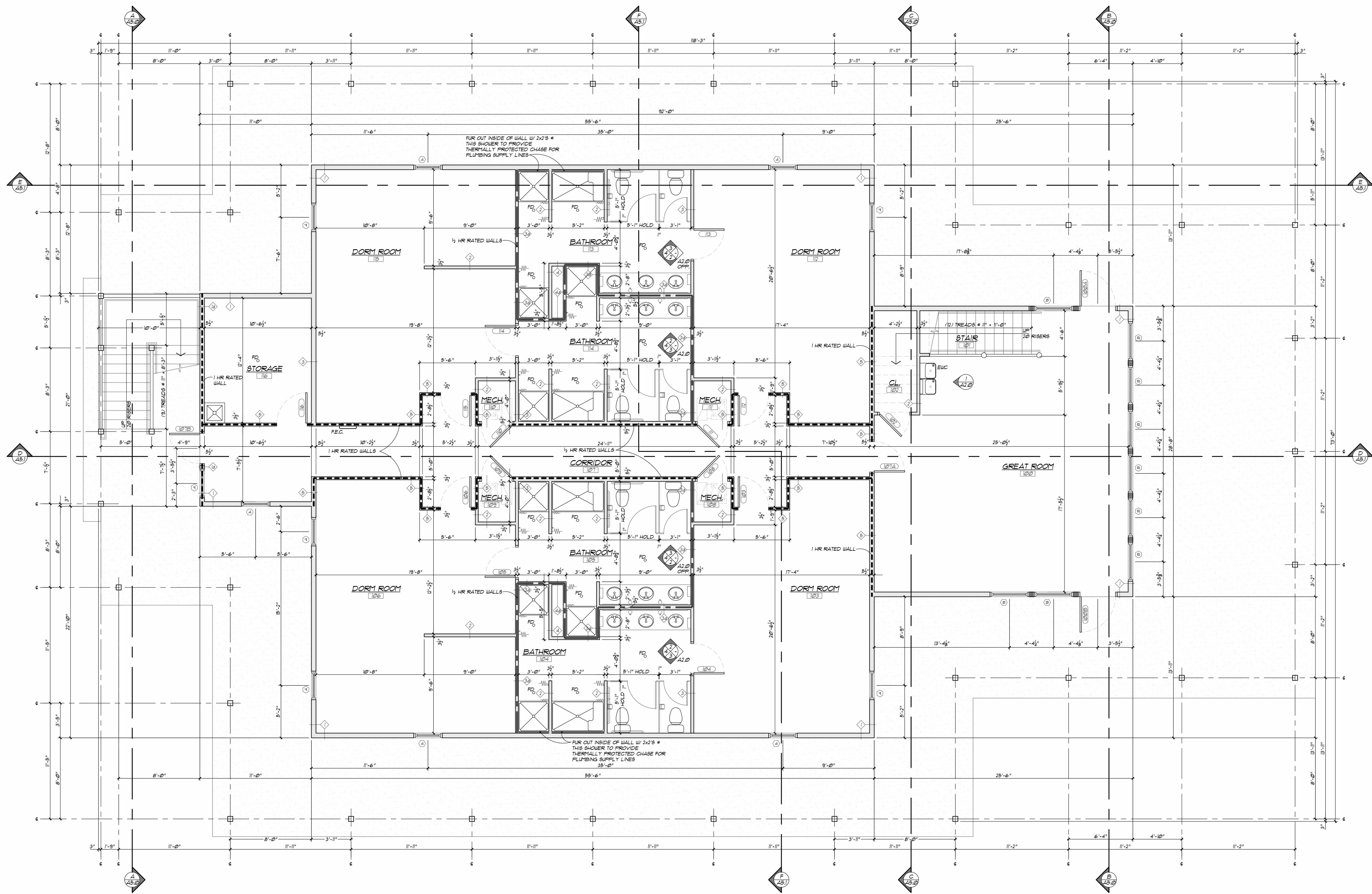




WALL TYPES LEGEND					
<p>◇ TYPICAL EXTERIOR WALL SIDING (TYPE VARIES - REFER TO ELEVATION) AIR INFILTRATION BARRIER 1/2" EXTERIOR GRADE SHEATHING 2x6 STUDS @ 16" O.C. R-21 INSULATION 5/8" GYPSUM BOARD VAPOR BARRIER PRIMER (2 COATS)</p>		<p>◇ TYPICAL SOUND ATTENUATION WALL - U.L. DESIGN 5104 (or equal) 5/8" GYPSUM BOARD 2x STUDS @ 16" O.C. (SEE PLAN FOR SIZE) 3/4" SOUND ATTENUATION BATT (2) LAYERS 5/8" GYPSUM BOARD</p>		<p>◇ TYPICAL SHAFT WALL - U.L. DESIGN 5104 (or equal) 1/2" HOUR FIRE RATING 5/8" GYPSUM BOARD 2x4 STUDS @ 16" O.C. 5/8" GYPSUM BOARD</p>	
<p>◇ TYPICAL EXTERIOR WALL - U.L. DESIGN 5103 (or equal) (1) HOUR FIRE RATED) 1" THICK FIBER CEMENT SIDING AIR INFILTRATION BARRIER 1" TYPE X EXTERIOR GYPSUM SHEATHING 2x6 STUDS @ 16" O.C. R-21 INSULATION 5/8" GYPSUM BOARD VAPOR BARRIER PRIMER (2 COATS)</p>		<p>◇ TYPICAL SOUND ATTENUATION WALL - U.L. DESIGN 5104 (or equal) 1/2" HOUR FIRE RATING 5/8" GYPSUM BOARD 2x STUDS @ 16" O.C. (SEE PLAN FOR SIZE) 3/4" SOUND ATTENUATION BATT (2) LAYERS 5/8" GYPSUM BOARD</p>		<p>◇ FIRE SEPARATION BARRIER - 1 HOUR RATING - U305 5/8" TYPE X GYPSUM BOARD 1/2" EXTERIOR GRADE SHEATHING 2x STUDS @ 16" O.C. (SEE PLAN FOR SIZE) 3/4" SOUND ATTENUATION BATT (2) LAYERS TYPE X 5/8" GYPSUM BOARD</p>	
<p>◇ TYPICAL INTERIOR WALL 5/8" GYPSUM BOARD 2x STUDS @ 16" O.C. (SEE PLAN FOR SIZE) 5/8" GYPSUM BOARD</p>		<p>◇ TYPICAL SHAFT WALL 5/8" GYPSUM BOARD 2x4 STUDS @ 16" O.C.</p>			

NOTES:
1. USE MOISTURE RESISTANT GYPSUM BOARD IN ALL BATHROOMS
2. SEE ROOM FINISH SCHEDULE FOR WALL FINISHES



MAIN LEVEL FLOOR PLAN
1/4" = 1'-0" NORTH

ARCHITECT OF RECORD: Dean DeKryger - License # ARS7456
DRAWN BY: K. Taylor, B. King
DATE ISSUED: November 17, 2015 Permits and Construction
SHEET NUMBER: A1.0
PROJECT NUMBER: 15101