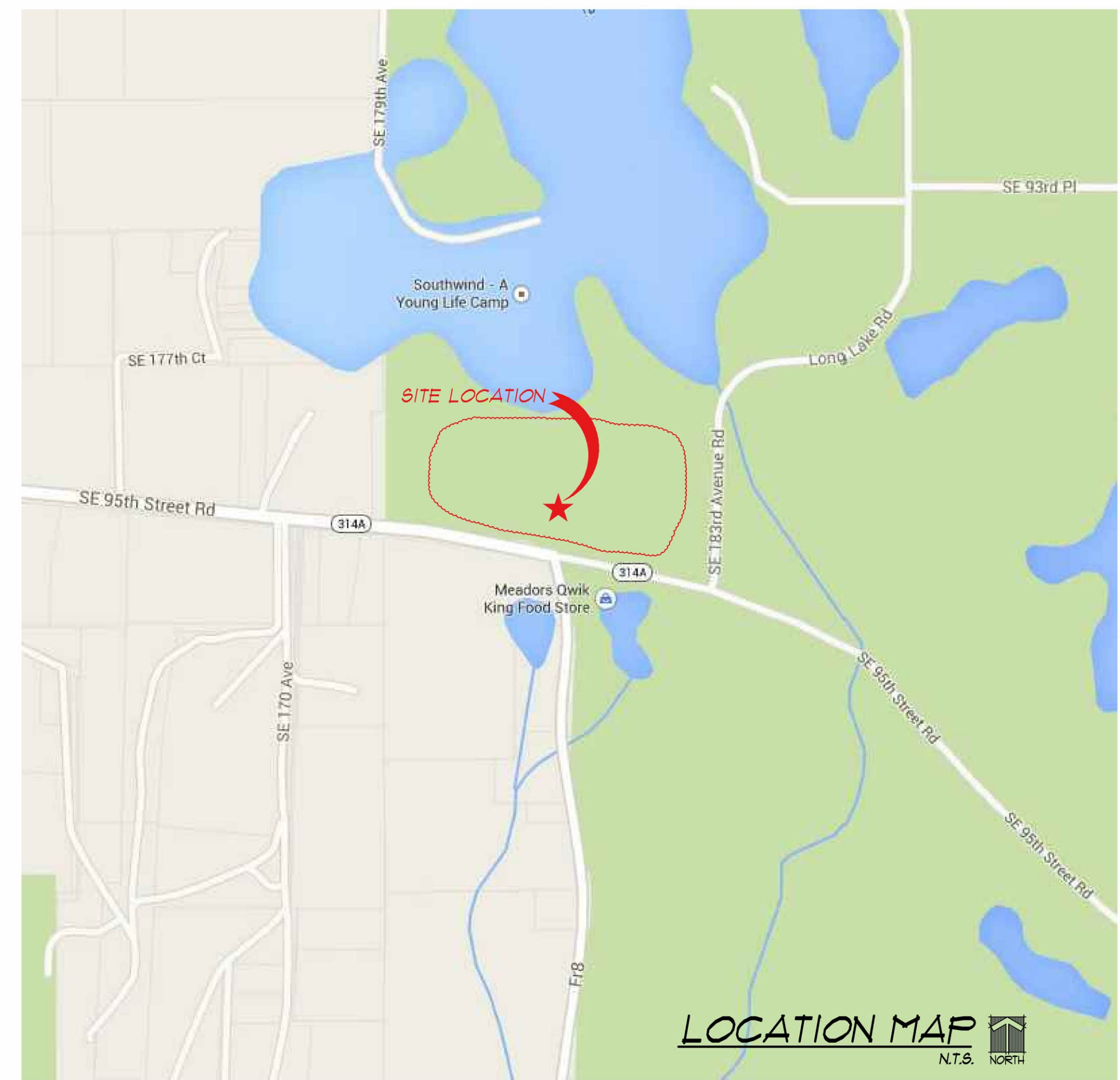


Proposed New Dorm for: Young Life - Southwind

18115 SE 95th Street Rd., Ocklawaha, FL

Code Study	
Jurisdiction:	Marion County, Florida
Code Enforced:	2010 Florida Building Code 2010 Florida Building Code Energy Conservation 2010 Florida Building Code Fuel Gas 2010 Florida Building Code Plumbing 2010 Florida Building Code Mechanical 2011 National Electrical Code
Construction Type:	VB (FBC Section 602 & Table 601)
Use Group:	R-1, Residential (FBC Section 310), Primarily transient in nature A-3, Assembly (FBC Section 303), Accessory use to Residential, separated mixed use, 1 hour separation (Table 508.4)
Allowable Area without increases:	6,000 sf/floor (Table 503)
Area increase due to fire suppression:	Increase 200% (FBC Section 506.3)
Area increase for open perimeter:	Increase 50% (FBC Section 506.2)
Allowable Area with increases:	$A_3 = [A_1 + (A_1 \times A_2) + (A_1 \times A_3)]$ $6000 + (6000 \times .5) + (6000 \times 2) = 21,000 \text{ sf}$ (FBC Section 506.1)
Actual Area:	4,097 s.f. footprint w/o covered porch 7,218 s.f. footprint w/ covered porch
Allowable Height without increases:	1 Stories, 40' (Table 503)
Allowable Height with increases:	2 Stories, 60' (FBC Section 504.2)
Actual Height:	2 Stories, (32' +/- above grade)
Occupant Load:	Main Level Residential - 1,714 sf / 200 = 9 Great Room - 596 sf / 15 = 40 Storage - 144 sf / 300 = 1 Mechanical - 76 sf / 300 = 1 Restrooms - = 0 Upper Level Residential - 1,714 sf / 200 = 9 Storage - 144 sf / 300 = 1 Mechanical - 76 sf / 300 = 1 Restrooms - = 0 TOTAL: = 62 people
Actual occupant load based on bed count:	Main Level - 52 Upper Level - 52 Total - 104 people <i>Note:</i> Assembly area accessory to Residential and to be used by occupants staying in this facility.
Required Separations:	Residential to Assembly, 1-hour (Table 508.4) Corridor must have a 1 hour enclosure (Table 1018.1) Sleeping unit to Sleeping unit, 1/2 hour (Section 709.3)
Allowed travel distance:	200'-0" (Table 1016.1)
Actual travel distance:	±100' MAX.
Fire suppression system required:	(FBC Section 903.2.8)
Fire suppression system shall be installed per:	NFPA 13R (FBC Section 903.3.1.2 & 903.3.1.2.1) for the Residential Occupancy NFPA 13 for the Assembly Occupancy
Fire alarm & fire detection required:	(FBC Section 907)
Means of egress lighting of 1 foot candle with 90 minutes of emergency power shall be provided:	(FBC, Section 1006)
Illuminated exit signs with 90 minutes of emergency power shall be provided:	(FBC, Section 1011)
Tactile exit signs stating "EXIT" and complying with ICC/ANSI A117.1 shall be provided adjacent to each door to an egress stairway, an exit passageway and the exit discharge:	(FBC Section 1011.3)
Minimum number of exits:	Main Level: 52 occupants = 2 exits (FBC, Table 1021.1) Upper Level: 52 occupants = 2 exits (FBC, Table 1021.1)
Exterior Stairway:	Permitted by FBC Section 1026.1
Exterior Stairway Protection:	No Separation required, (FBC, Section 1026.6)
Unenclosed Exits:	Allowed, (FBC, Section 1016.1, Exception 3)



INDEX OF DRAWINGS

T	CODE DATA, LOCATION MAP, SHEET INDEX
C1.0	SITE LOCATION PLAN
S0.1	STRUCTURAL NOTES
S1.0	FOUNDATION PLAN, DETAILS & SCHEDULE
S2.0	UPPER FLOOR / PORCH ROOF FRAMING PLAN & SCHEDULE
S3.0	UPPER ROOF FRAMING PLAN & SCHEDULE
S4.0	FRAMING DETAILS
A1.0	MAIN LEVEL FLOOR PLAN & WALL SCHEDULE
A1.1	UPPER LEVEL FLOOR PLAN & WALL SCHEDULE
A2.0	ROOM/DOOR SCHEDULES, DETAILS & INT. ELEVATIONS
A3.0	EXTERIOR ELEVATIONS
A3.1	EXTERIOR ELEVATIONS
A4.0	ROOF PLAN, MAIN AND UPPER LEVEL REFLECTED CEILING PLANS
A5.0	BUILDING SECTIONS
A5.1	BUILDING SECTIONS
A6.0	WALL SECTIONS
A6.1	WALL SECTIONS & DETAILS
A7.0	ARCHITECTURAL SPECIFICATIONS
A7.1	ARCHITECTURAL SPECIFICATIONS
P1.0	MAIN LEVEL DOMESTIC WATER SUPPLY AND SANITARY PLAN
P1.1	UPPER LEVEL DOMESTIC WATER SUPPLY AND SANITARY PLAN
P2.0	PLUMBING FIXTURE SCHEDULE & SPECIFICATIONS
M1.0	MAIN LEVEL MECHANICAL PLAN
M1.1	UPPER LEVEL MECHANICAL PLAN
M2.0	MECHANICAL SCHEDULES & SPECIFICATIONS
E1.0L	MAIN LEVEL LIGHTING PLAN
E1.1L	UPPER LEVEL LIGHTING PLAN
E1.0P	MAIN LEVEL POWER PLAN
E1.1P	UPPER LEVEL POWER PLAN
E2.0	ELECTRICAL LEGEND, GENERAL NOTES & TELEPHONE DETAILS
E2.1	ELECTRICAL PANELS, LIGHT FIXTURE SCHEDULE & RISER DIAGRAM

**Proposed New Dorm for
Young Life - Southwind**
 18115 SE 95th Street Rd., Ocklawaha, FL 32179

ARCHITECT OF RECORD:
Dean DeKryger - License # ARS7456
DRAWN BY:
K. Taylor, B. King

DATE ISSUED:
June 23, 2015 Permits and Construction

SHEET NUMBER:
T

PROJECT NUMBER:
15101