

ESPAZIO DESIGN CORP.

6303 Blue Lagoon Drive
 Suite 400
 Miami, Florida 33126
 Tel: 305.537.4234
 www.espaziodesign.com

AA26002938

**HARDING SUITES HOTEL
 BOUTIQUE: HOTEL CONVERSION**

8040 HARDING AVENUE
 MIAMI BEACH, FL 33141

Project No. 214.01

CLIENT:
 CAURUS LLC
 P.O. BOX 191862
 MIAMI BEACH, FL 33119

**ISSUED FOR:
 VERTICAL ACCESSIBILITY WAIVER**

NO. DATE REVISION

DRAWN APPROVED
 AC AC
 DATE SCALE
 02-29-16 AS SHOWN

CONSULTANTS:

SEALED SIGNATURE

N. ALEXANDRA CARDENAS-BARRERO
 F.A. LEED AP
 P.A.R. 0094540

The drawing is the property of
 Espazio Design Corp. and is not to be reproduced or
 copied in whole or part, it is
 not to be used on any other
 project without the written
 permission of Espazio Design
 on request.

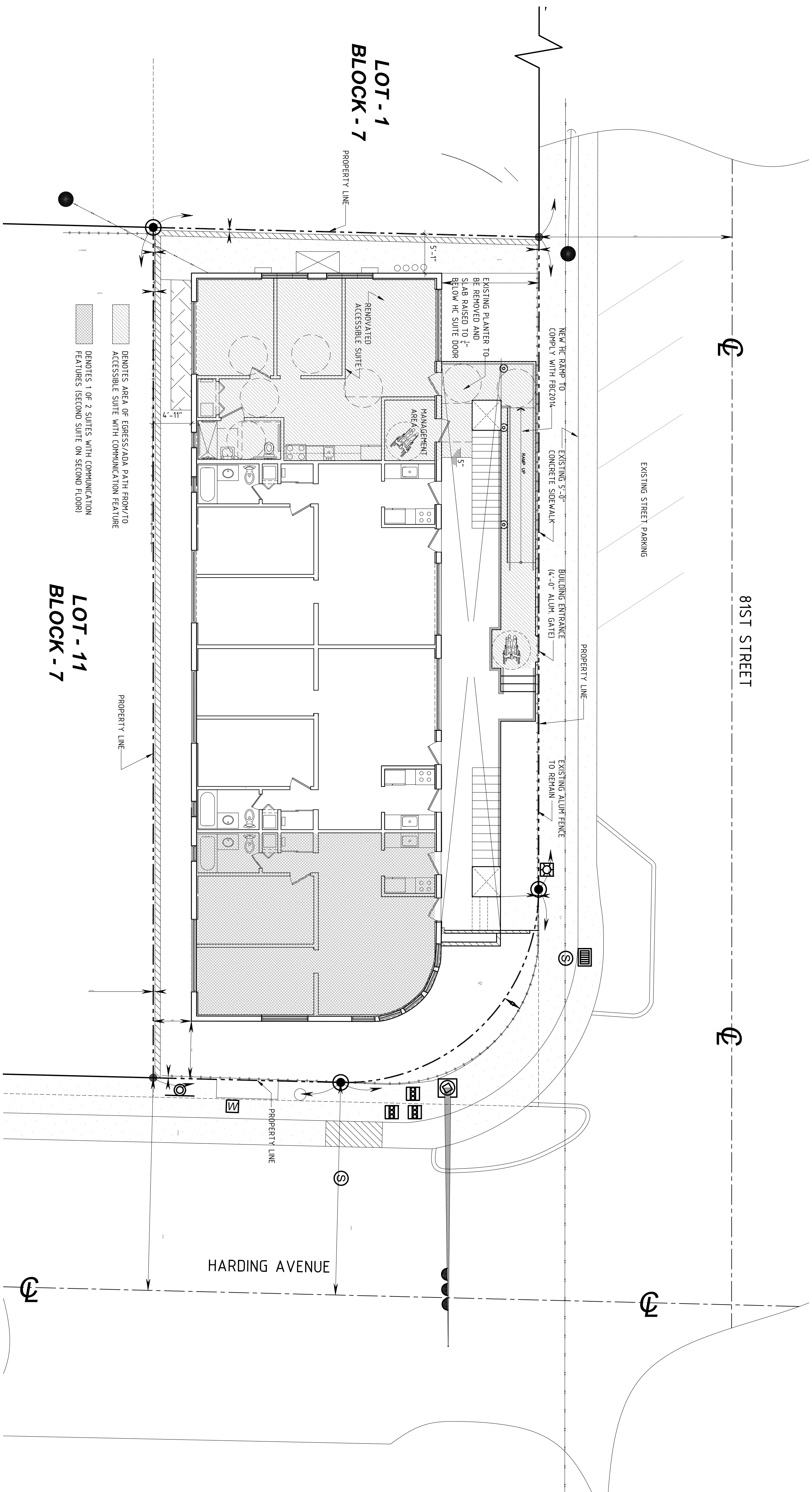
Copyright 2016

SHEET TITLE

SITE PLAN

SHEET NUMBER

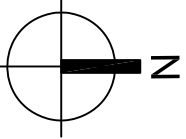
A-01



1 SITE PLAN

A-01

SCALE: 1/8" = 1'-0"



MOBILITY/COMMUNICATION FEATURE ANALYSIS			
	REQUIRED	EXISTING CONDITION	PROPOSED
GUEST ROOMS WITH MOBILITY FEATURES PER FBC2011 ACCESSIBILITY TABLE 224.2	1-25 ROOMS = 1 REQUIRED	0 EXISTING	1 PROPOSED
GUEST ROOMS WITH MOBILITY & COMMUNICATION FEATURES PER FBC2011 ACCESSIBILITY TABLE 224.5	AT LEAST ONE GUESTROOM REQUIRED TO PROVIDE MOBILITY FEATURES SHALL ALSO PROVIDE COMMUNICATION FEATURES	0 EXISTING	0 EXISTING
GUEST ROOMS WITH COMMUNICATION FEATURES PER FBC2011 ACCESSIBILITY TABLE 224.4	2-25 ROOMS = 2 REQUIRED	0 EXISTING	2 PROPOSED

NOTE: 1 MOBILITY & COMMUNICATION ACCESSIBLE SUITE AND 2 SUITES WITH COMMUNICATION FEATURES TO BE DISPersed AMONG THE VARIOUS CLASSES OF GUESTROOMS PER FBC 2011 ACCESSIBILITY TABLE 224.5