

© 2014 JOHN W. AHERN, ARCHITECT  
 ALL DRAWINGS AND MATERIAL SPECIFICATIONS HEREON ARE THE PROPERTY OF JOHN W. AHERN, ARCHITECT, AND THE SCALE OR ANY PART THEREOF USED IN ANY MANNER WITHOUT THE WRITTEN CONSENT OF THE ARCHITECT SHALL BE VOID. THE ARCHITECT'S LIABILITY IS LIMITED TO THE AMOUNT OF THE FEE RECEIVED FOR THIS SERVICE.

**ARCHITECTURAL ELEMENTS:-**

1. PREDOMINANTLY VERTICAL, RECTANGULAR WINDOW.
2. BALUNYA SHUTTERS AT WINDOW.
3. STANDING BEAM METAL ROOF.
4. ENTRY PORCHICO.

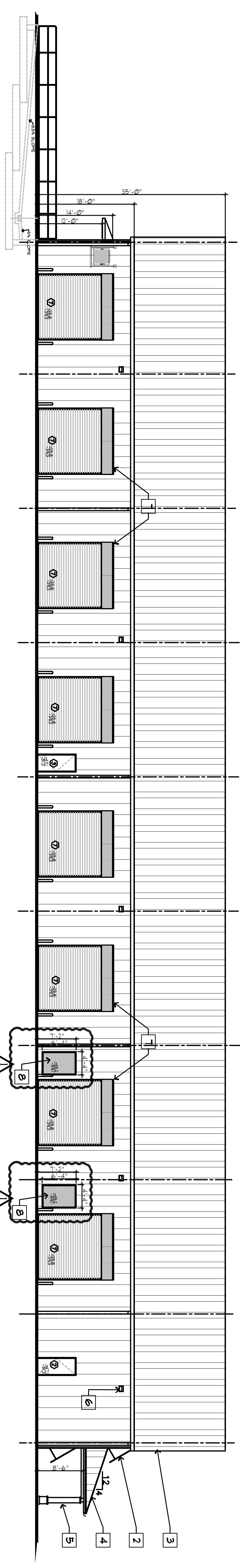
5. 12" x 12" SQUARE ORNAMENTAL COLUMNS WITH 16" x 16" x 20" FEDERSTAL BASE AT ENTRY PORCHICO.
6. EXTERIOR LIGHTING (STYLERS PER OWNER).

7. ORNAMENTAL BALUNYA CANOPIES ABOVE LEAD DOORS (EXTERIOR ARCHITECT).

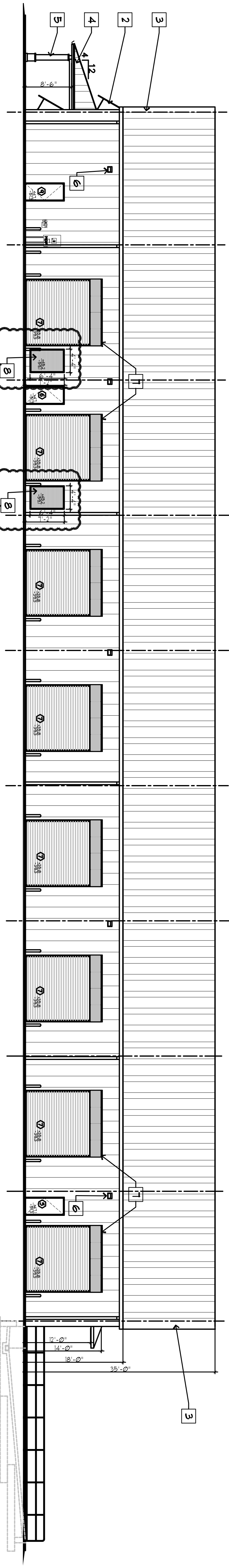
8. ALUMINUM WINDOW FINISH (PREFERRED FINISH PER OWNER) (SEE PRODUCT APPROVAL ON SHEET A-5.1)

**ARCHITECTURAL EXTERIOR COLORS:-**

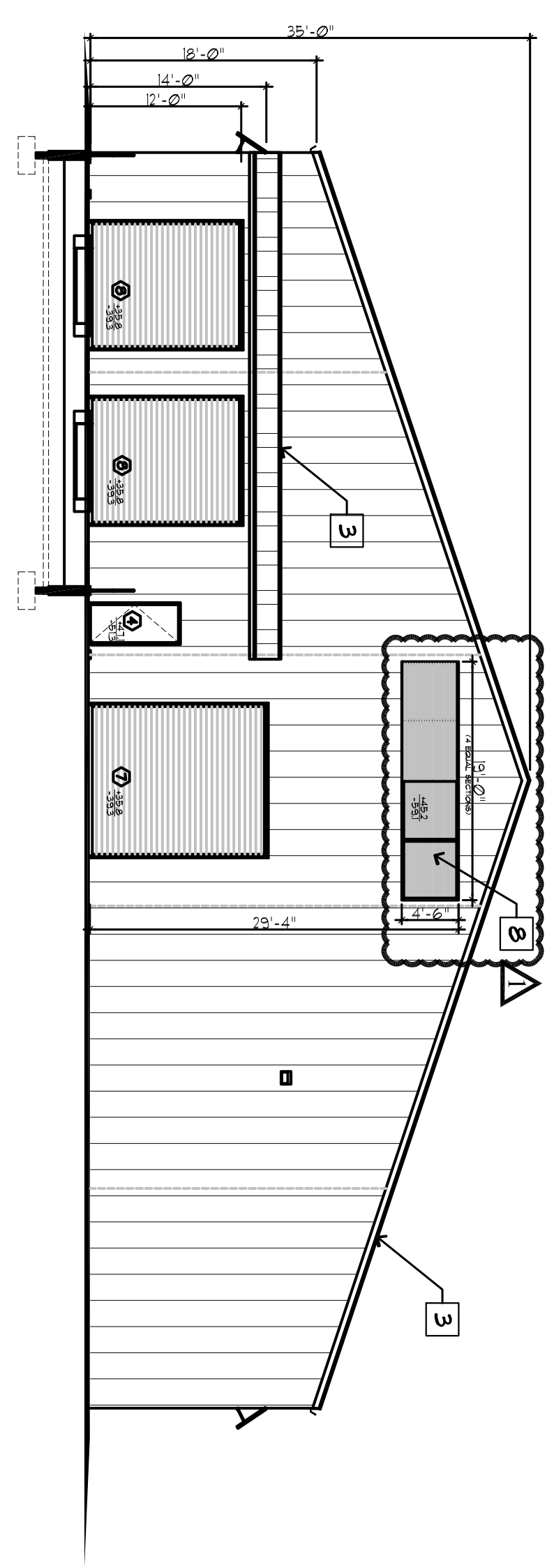
- A. STANDING BEAM METAL ROOF ALUMINUM ZINC COATING SYSTEM ALUMINUM 99% 1Z, R4, T1
- B. METAL WALLS, POLAR WHITE, 99% 1Z, R4, 25
- C. METAL FASCIA & TRIM, NICOR 99% COOL COATING SYSTEM AZTEC BLUE, 99% 2Z, R4, 25



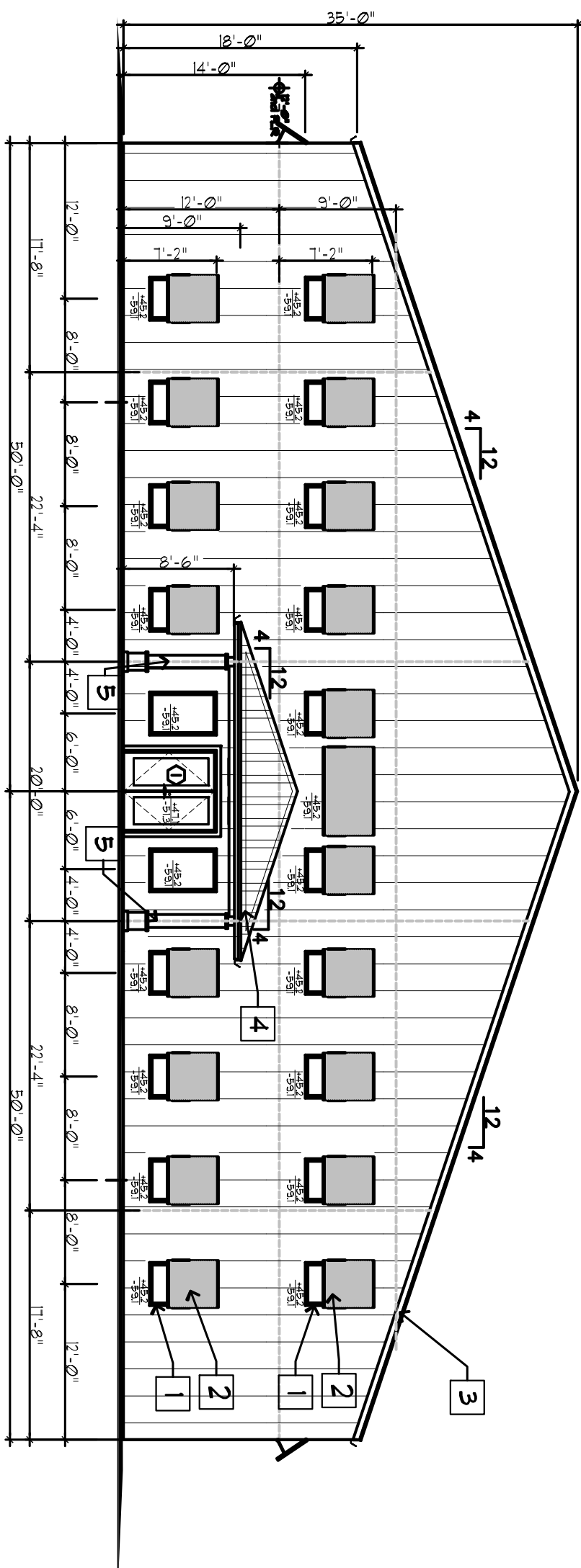
**PRELIMINARY EXTERIOR ELEVATION - EAST**  
SCALE: 3/32" = 1'-0"



**PRELIMINARY EXTERIOR ELEVATION - WEST**  
SCALE: 3/32" = 1'-0"



**PRELIMINARY EXTERIOR ELEVATION - SOUTH**  
SCALE: 3/32" = 1'-0"



**PRELIMINARY EXTERIOR ELEVATION - NORTH**  
SCALE: 3/32" = 1'-0"

**PROJECT TITLE**  
**EXPERT**  
**SHUTTER SERVICES**  
**BUILDING**

1626 SW BILTMORE STREET  
 FORT ST. LUCIE, FLORIDA 34964

27-MAY-2015  
 REV. DATE

PROJECT ISSUED  
 14-1822 17-MAR-2015

SHEET  
**A-5.1**