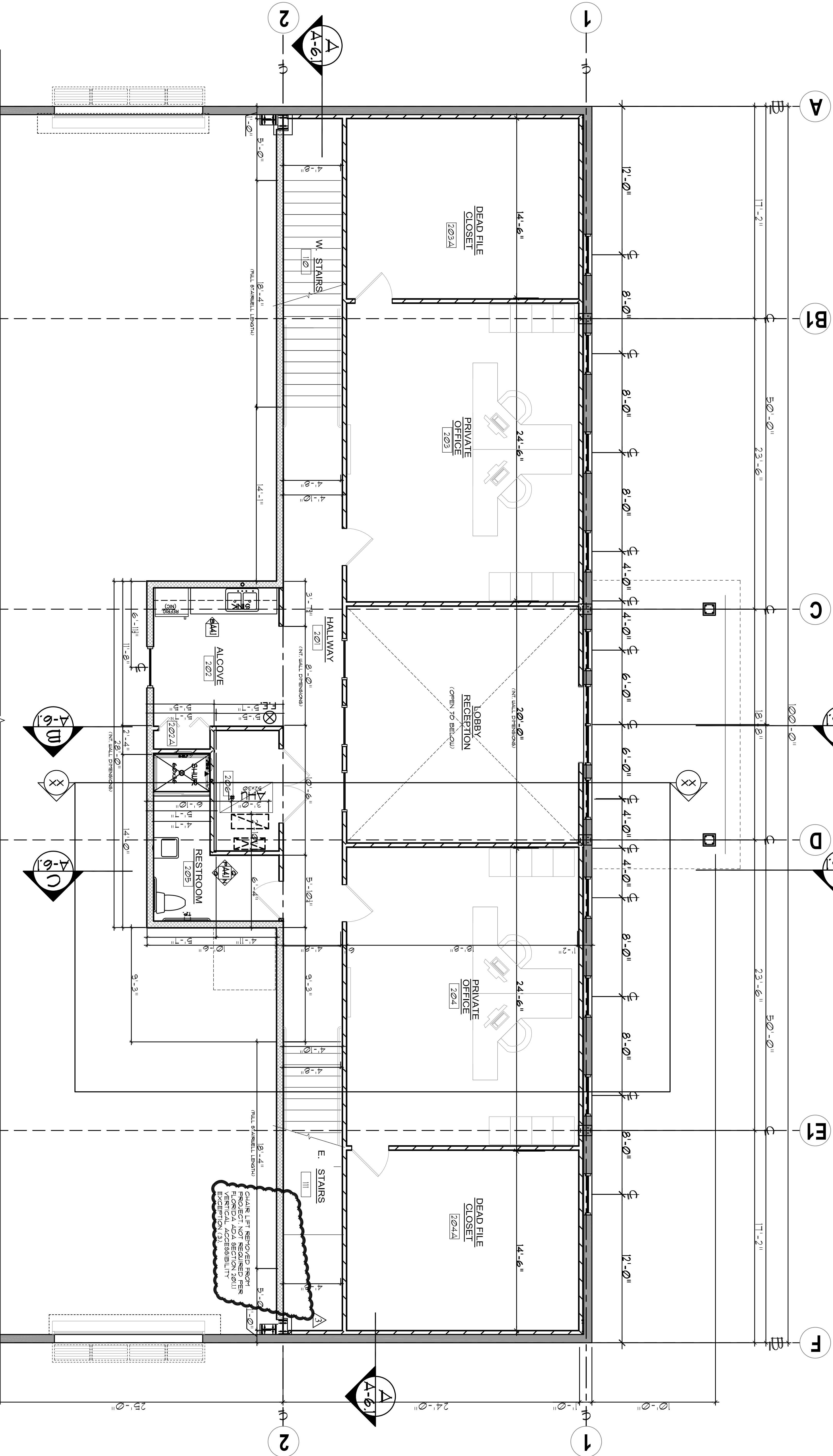


**CONSTRUCTION NOTES**

- 1 FIRE EXTINGUISHER CABINETS, #5A/B/C PER LOCAL CODE - 5 LOCATIONS
- 2 ADA-COMPLIANT H-I-O DRINKING FOUNTAIN W/PLAT CUP DISPENSER (MOUNTED 44" AFF TO CUP) PER CHAPTER 11, SECTION 1103.4.1.2
- 3 GRADE BARS TO SUPPORT 250 LB. LIVE LOAD (MOUNTED PER MANUFACTURER SPECIFICATIONS)
- 4 SHOULDER WITH GRADE BARS 7' FLEX WITH 200# FBC QUARTER 11-6092 QUONER SLAB TO ACCOMMODATE ADA ROLL-IN REQUIREMENT (MAX 1/2" THRESHOLD)
- 5 SOUND INSULATE ALL RESTROOM & AHU CLOSET WALLS.
- 6 57x11x88 STEEL SINKS (SINGLE & DOUBLE BOWL) w/ GOOSENECK FRONT DRAWING (TOP) SINK & FAUCET (VEEPY MODEL NUMBER ON MEP DRAWING #011)
- 7 24" DEEP BASE CABINET w/ COUNTERTOP & 34" HEP (SEE SHEET A41) (STYLE COLOR AND FINISH PER OWNER)
- 8 24" DEEP BASE CABINET w/ COUNTERTOP COLOR AND FINISH PER OWNER
- 9 2" x 2" ACCESS SCUTTLE (LOCATION PER OWNER)
- 10 HVAC COMPRESSOR UNITS FOR 99" PLT SYSTEMS (SEE DETAILS ON MEP DRAWINGS MECH. (11) SHEETS 1 & 211)
- 11 60" x 60" CLEAR FLOOR SPACE IN FRONT OF DOORS FOR ADA COMPLIANCE.



**OFFICE FLOOR PLAN - 2nd LEVEL**  
 SCALE: 1/4" = 1'-0"

**PROJECT TITLE**  
**EXPERT SHUTTER SERVICES BUILDING**

1626 SW BILTKOPE STREET  
 FORT ST. LUCIE, FLORIDA 34964

6-JAN-2016  
 20-NOV-2015  
 27-MAY-2015

PROJECT ISSUED  
 14-1822 17-MAR-2015

SHEET  
**A-2.3**