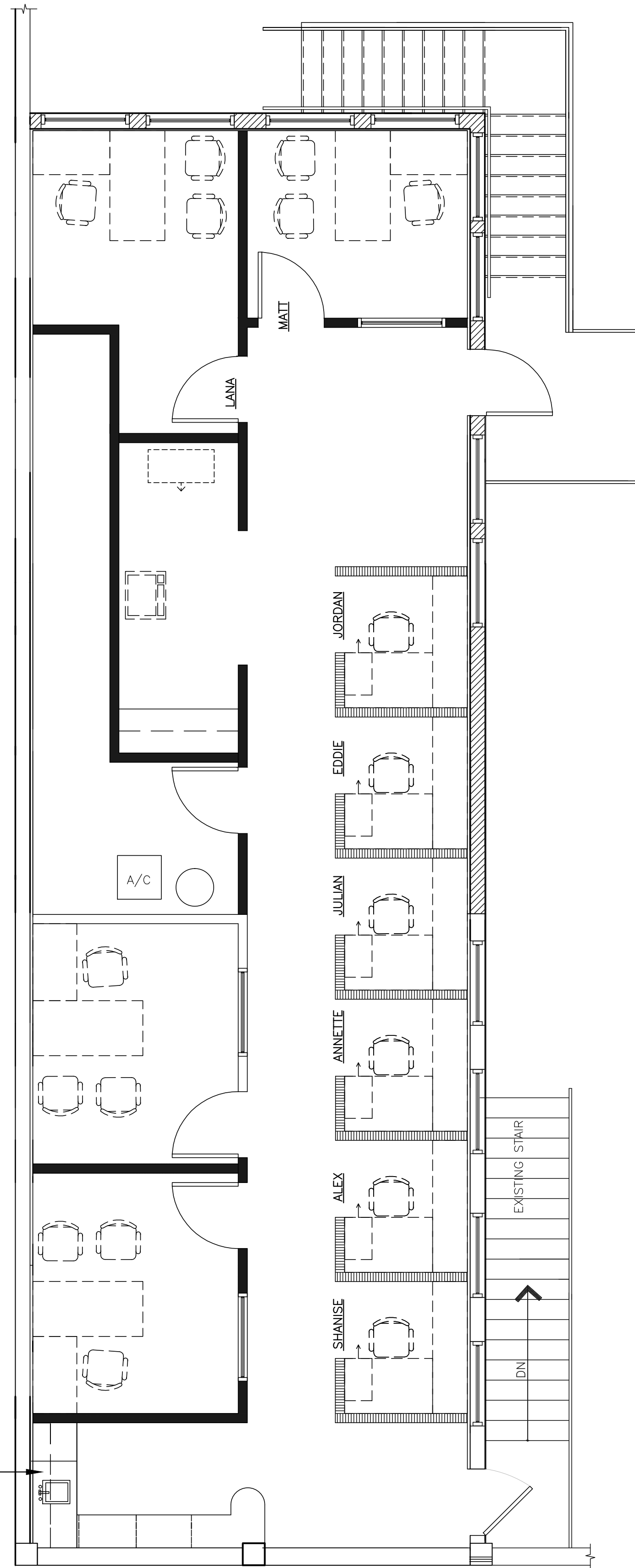


GENERAL DEMOLITION NOTES:

- 1 REMOVE EXISTING WINDOW.
- 2 REMOVE EXISTING DOOR.
- 3 REMOVE EXISTING EQUIPMENT (NOT APPLICABLE THIS SHEET).
- 4 REMOVE EXISTING WOOD GUARD RAIL.
- 5 REMOVE EXISTING CABINETRY/ MILLWORK.
- 6 REMOVE EXISTING NON LOAD BEARING PARTITIONS.

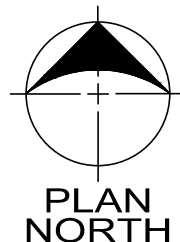


COFFEE MINI-FRIDGE, DISPOSAL & MICROWAVE

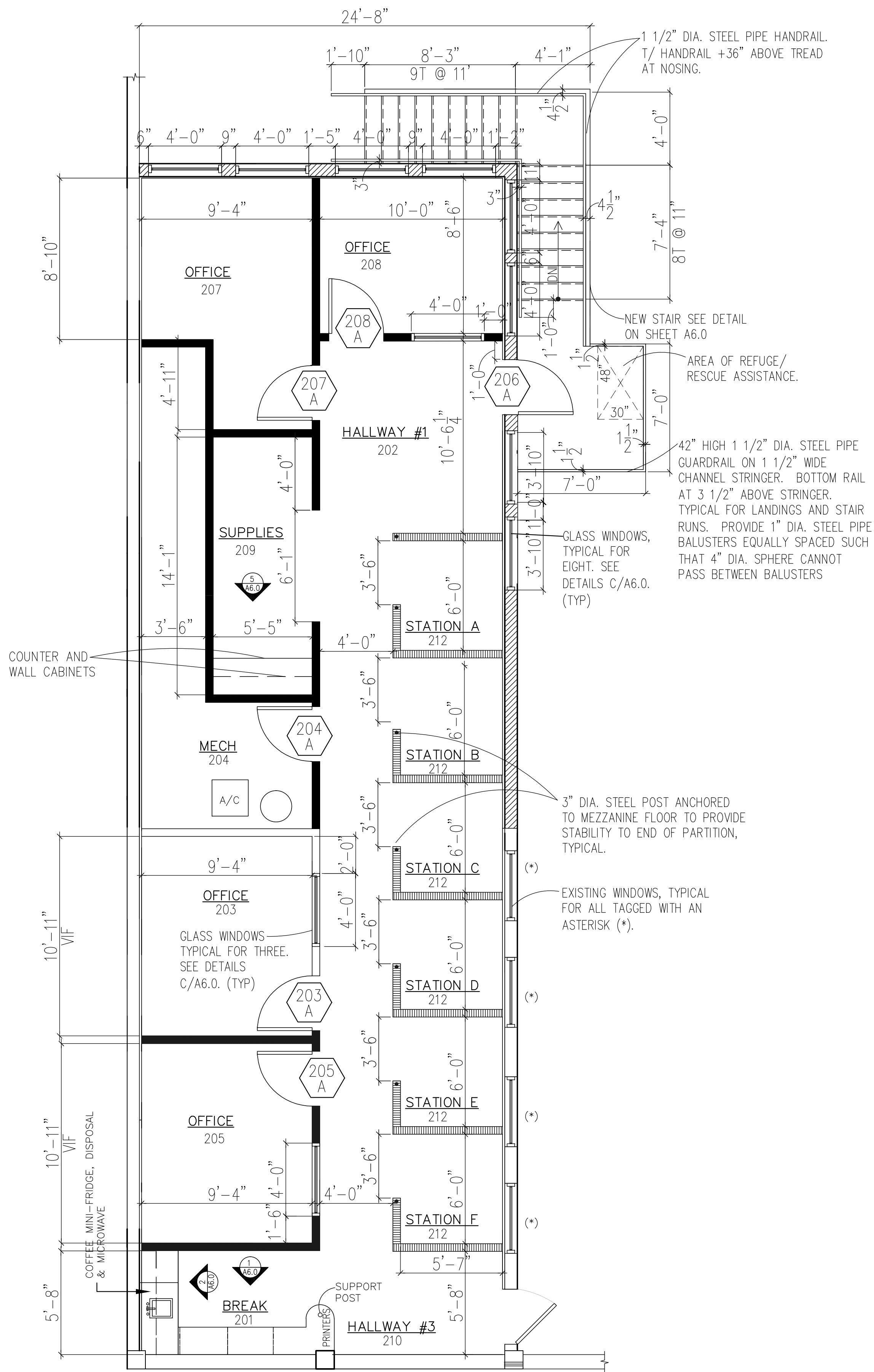
FURNITURE PLAN

SCALE: 1/4"=1'-0"

ALL ITEMS SHOWN DASHED ARE FURNITURE ITEMS SUPPLIED BY CITY MATTRESS AND INSTALLED BY THE G.C.



- PARTITION LEGEND**
- NEW PARTITION-SEE DETAIL A/A6.0
 - NEW PARTITION-SEE DETAIL B/A6.0
 - NEW 48" HIGH PARTITION-SEE DETAIL B/A6.0 (SIM)
 - EXISTING WALL CONSTRUCTION
 - EXISTING WALL TO BE REMOVED



1 1/2" DIA. STEEL PIPE HANDRAIL T/ HANDRAIL +36" ABOVE TREAD AT NOSING.

NEW STAIR SEE DETAIL ON SHEET A6.0

AREA OF REFUGE/ RESCUE ASSISTANCE.

42" HIGH 1 1/2" DIA. STEEL PIPE GUARDRAIL ON 1 1/2" WIDE CHANNEL STRINGER. BOTTOM RAIL AT 3 1/2" ABOVE STRINGER. TYPICAL FOR LANDINGS AND STAIR RUNS. PROVIDE 1" DIA. STEEL PIPE BALUSTERS EQUALLY SPACED SUCH THAT 4" DIA. SPHERE CANNOT PASS BETWEEN BALUSTERS

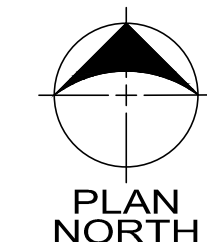
GLASS WINDOWS, TYPICAL FOR EIGHT. SEE DETAILS C/A6.0. (TYP)

3" DIA. STEEL POST ANCHORED TO MEZZANINE FLOOR TO PROVIDE STABILITY TO END OF PARTITION, TYPICAL.

EXISTING WINDOWS, TYPICAL FOR ALL TAGGED WITH AN ASTERISK (*).

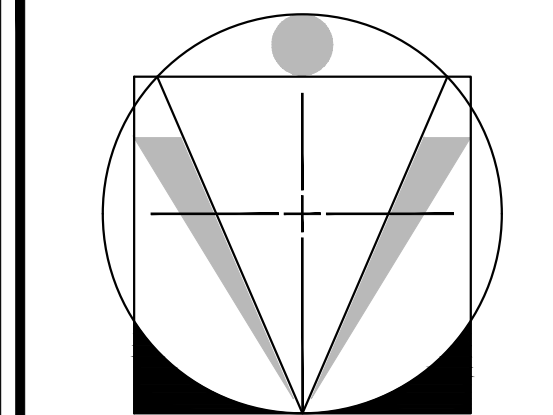
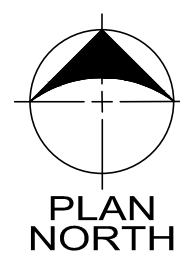
MEZZANINE FLOOR PLAN

SCALE: 1/4"=1'-0"



DEMOLITION/
EXISTING MEZZANINE FLOOR PLAN

SCALE: 1/4"=1'-0"

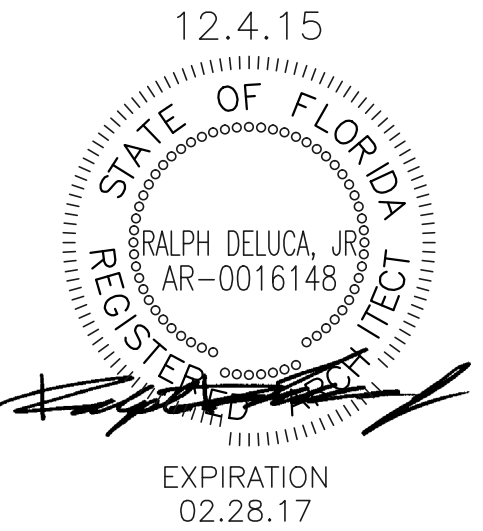


D.Z.A.
ASSOCIATES, INC.
FL. LIC. #AA0003104

258 S.E. 6th Avenue Suite 3
Delray Beach, Florida 33483
Phone 561-330-0826 Fax 561-330-9707
2625 Butterfield Road Suite 233N
Oak Brook, Illinois 60523
Phone-630-230-1020 www.dzarch.com

© 2016 D.Z.A. ASSOCIATES, INC. THE ARCHITECT SHALL BE DEEMED THE AUTHOR OF THESE DOCUMENTS AND SHALL RETAIN ALL COMMON LAW, STATUTORY AND OTHER RIGHTS, INCLUDING COPYRIGHT.

Rev. No.	Description	Date
▲	VERTICAL ACCESSIBILITY WAIVER	2/26/16



REMODELING OF EXISTING
BREAK ROOM AND
MEZZANINE OFFICES
FOR:

CITY MATTRESS

2255 PALM BEACH
LAKES BOULEVARD
WEST PALM BEACH, FL 33401

MEZZANINE FLOOR PLANS

Date: 2/26/16	Drawn By: K.B.	Sheet No.:
Project No.:	Rev'd By:	A4.0
15.081	R.D.	