

REVISIONS	DATE

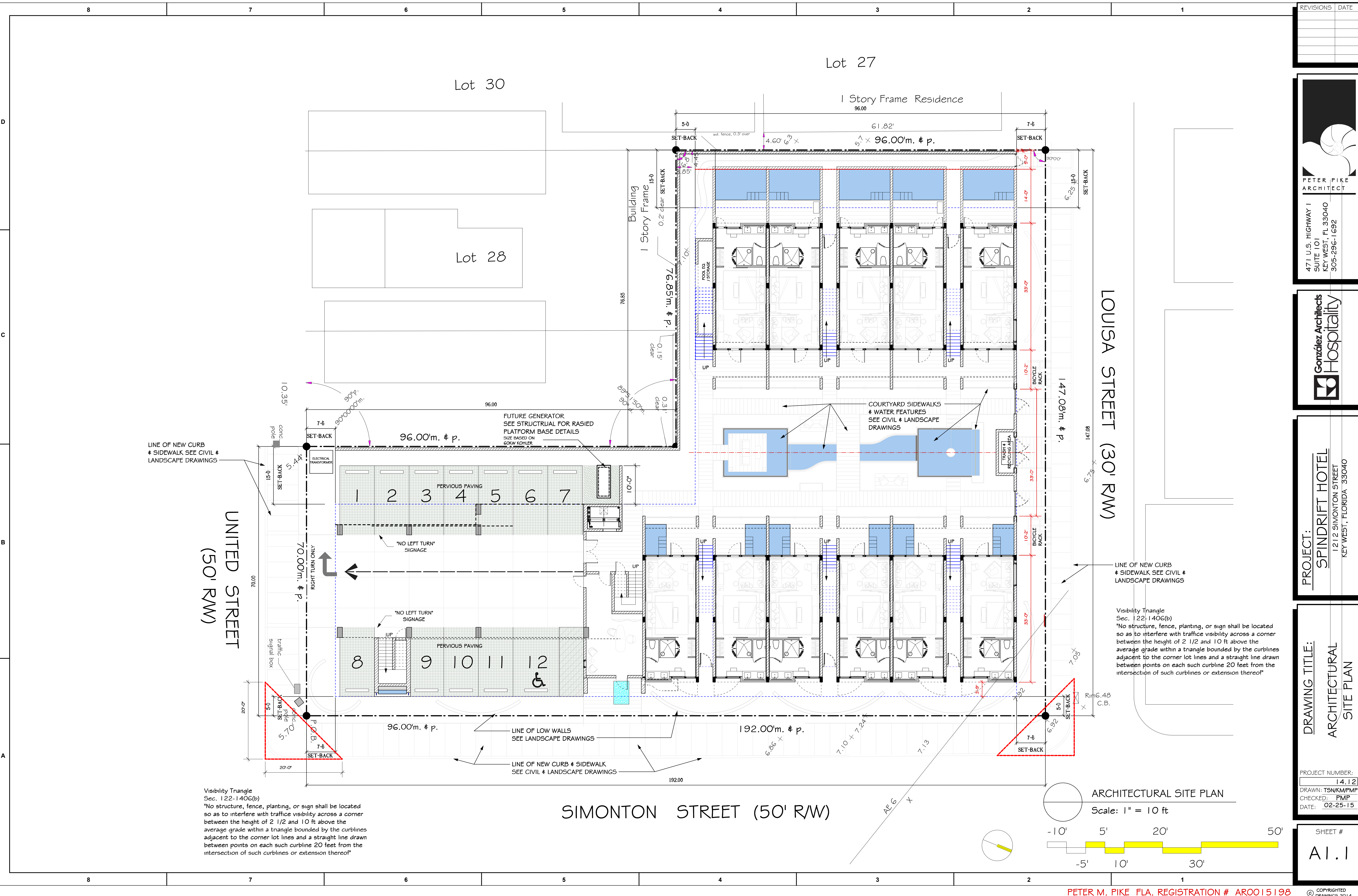
PETER PIKE ARCHITECT
 471 U.S. HIGHWAY 1
 SUITE 101
 KEY WEST, FL 33040
 305-296-1692

González Architects Hospitality
 PROJECT: **SPINDRIFT HOTEL**
 1212 SIMONTON STREET
 KEY WEST, FLORIDA 33040

DRAWING TITLE:
ARCHITECTURAL SITE PLAN

PROJECT NUMBER:
 14.1.2
 DRAWN: TSN/KM/PMP
 CHECKED: PMP
 DATE: 02-25-15

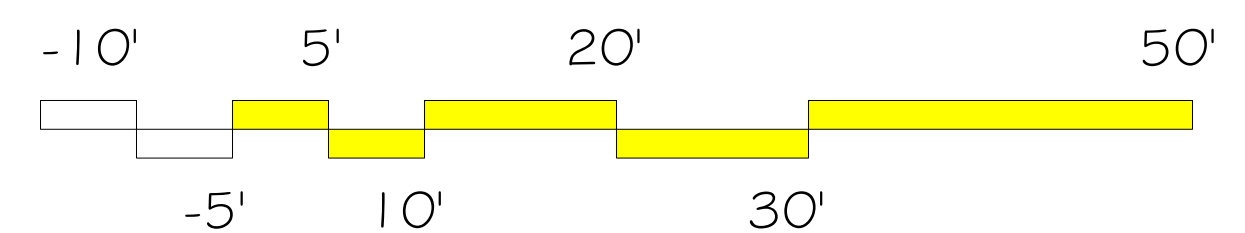
SHEET #
A1.1

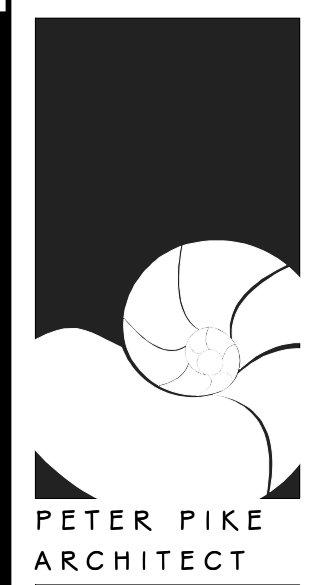


Visibility Triangle
 Sec. 122-140G(b)
 "No structure, fence, planting, or sign shall be located so as to interfere with traffic visibility across a corner between the height of 2 1/2 and 10 ft above the average grade within a triangle bounded by the curb lines adjacent to the corner lot lines and a straight line drawn between points on each such curbline 20 feet from the intersection of such curb lines or extension thereof"

Visibility Triangle
 Sec. 122-140G(b)
 "No structure, fence, planting, or sign shall be located so as to interfere with traffic visibility across a corner between the height of 2 1/2 and 10 ft above the average grade within a triangle bounded by the curb lines adjacent to the corner lot lines and a straight line drawn between points on each such curbline 20 feet from the intersection of such curb lines or extension thereof"

ARCHITECTURAL SITE PLAN
 Scale: 1" = 10 ft





PETER PIKE ARCHITECT
471 U.S. HIGHWAY 1
SUITE 101
KEY WEST, FL 33040
305-296-1692

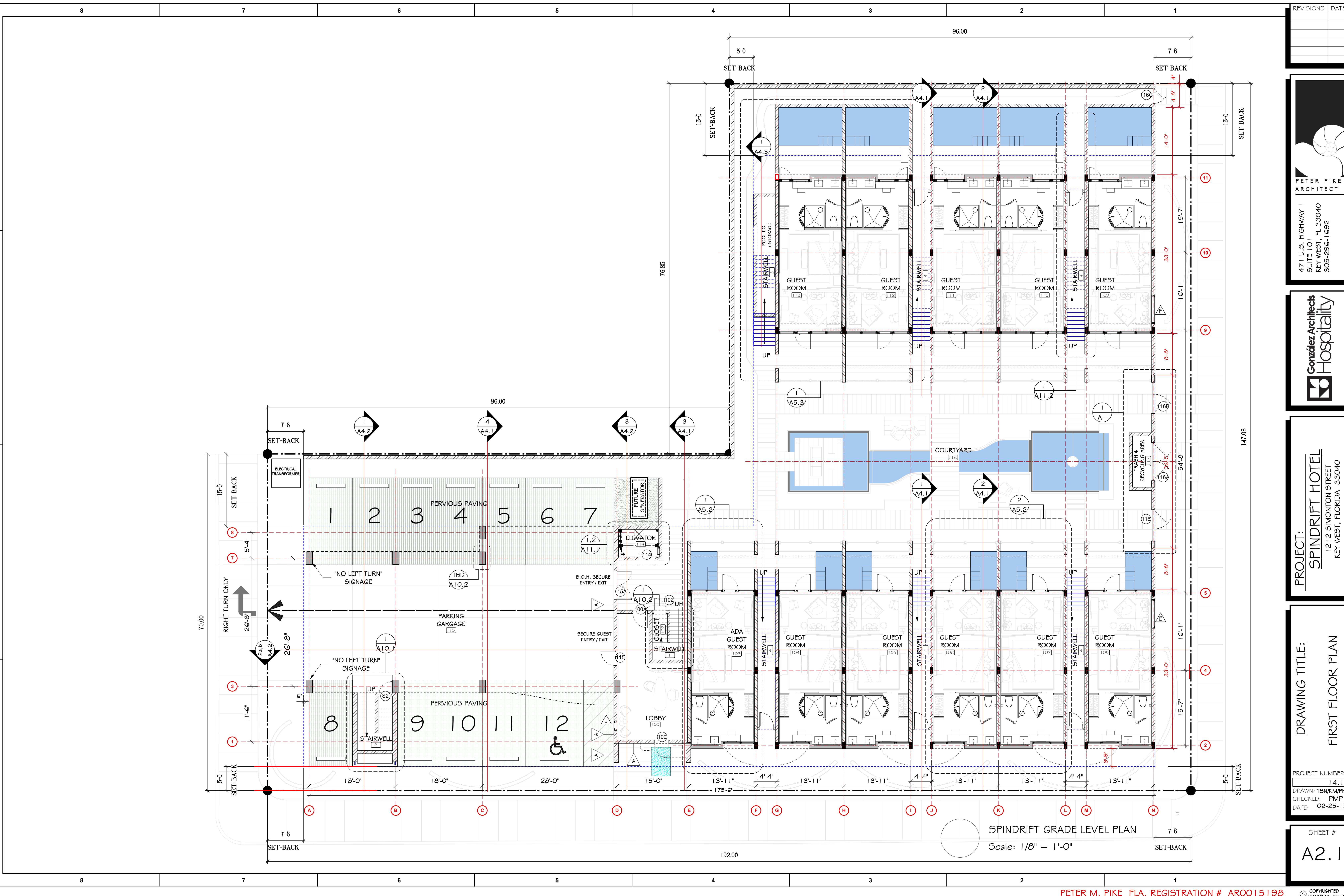


PROJECT:
SPINDRIFT HOTEL
1212 SIMONTON STREET
KEY WEST, FLORIDA 33040

DRAWING TITLE:
FIRST FLOOR PLAN

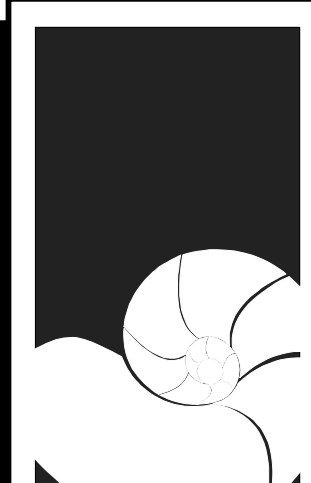
PROJECT NUMBER:
14.12
DRAWN: TSN/KMP/MP
CHECKED: PMP
DATE: 02-25-15

SHEET #
A2.1



SPINDRIFT GRADE LEVEL PLAN
Scale: 1/8" = 1'-0"

REVISIONS	DATE



PETER PIKE
ARCHITECT

471 U.S. HIGHWAY 1
SUITE 101
KEY WEST, FL 33040
305-296-1692

Conzález Architects
Hospitality

PROJECT:
SPINDRIFT HOTEL
1212 SIMONTON STREET
KEY WEST, FLORIDA 33040

DRAWING TITLE:
SECOND FLOOR PLAN

PROJECT NUMBER:
14.1.2
DRAWN: TSN/KM/PMP
CHECKED: PMP
DATE: 02-25-15

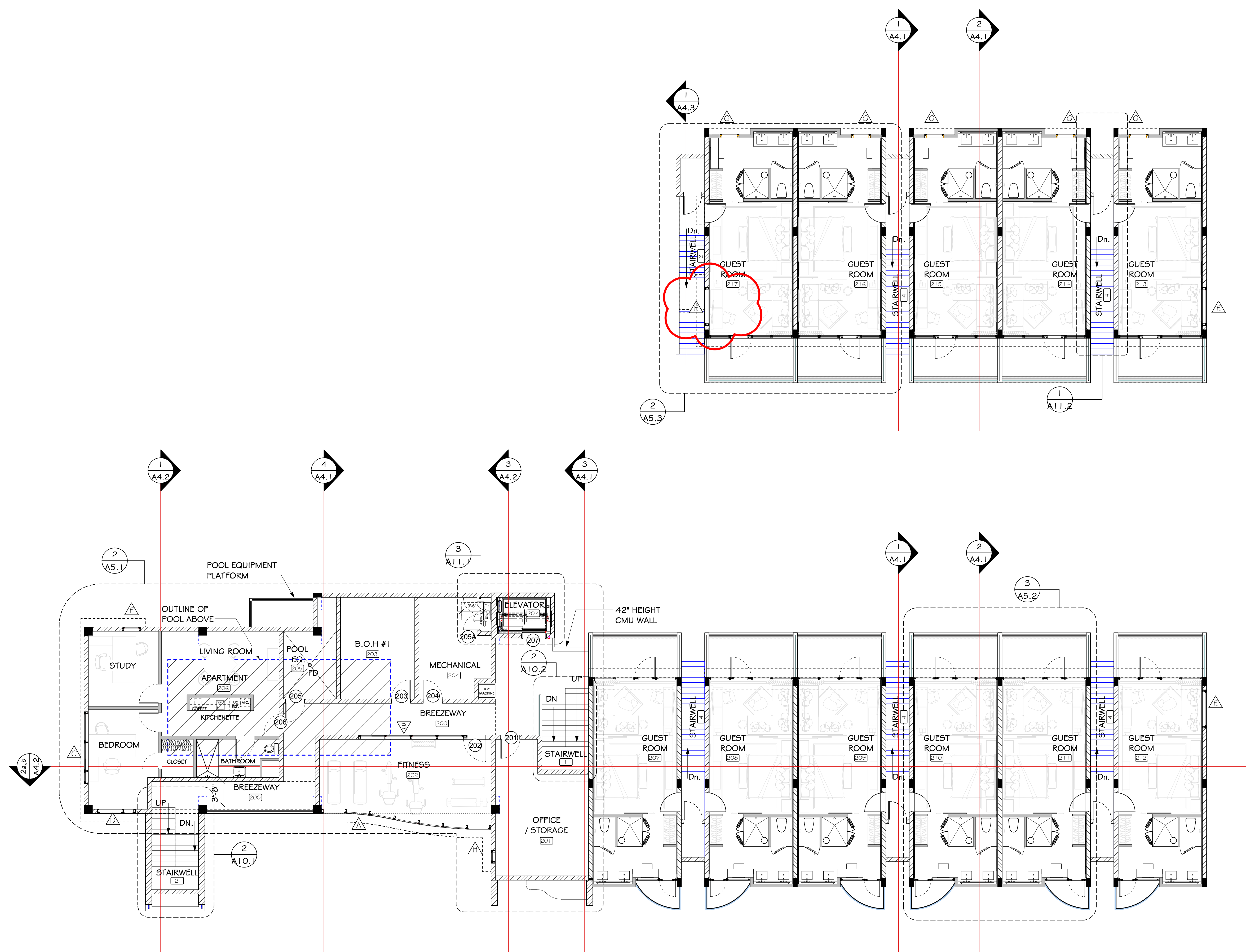
SHEET #
A2.2

D

C

B

A



SPINDRIFT 2ND LEVEL PLAN
Scale: 1/8" = 1'-0"

REVISIONS	DATE

PETER PIKE ARCHITECT
 471 U.S. HIGHWAY 1
 SUITE 101
 KEY WEST, FL 33040
 305-296-1692

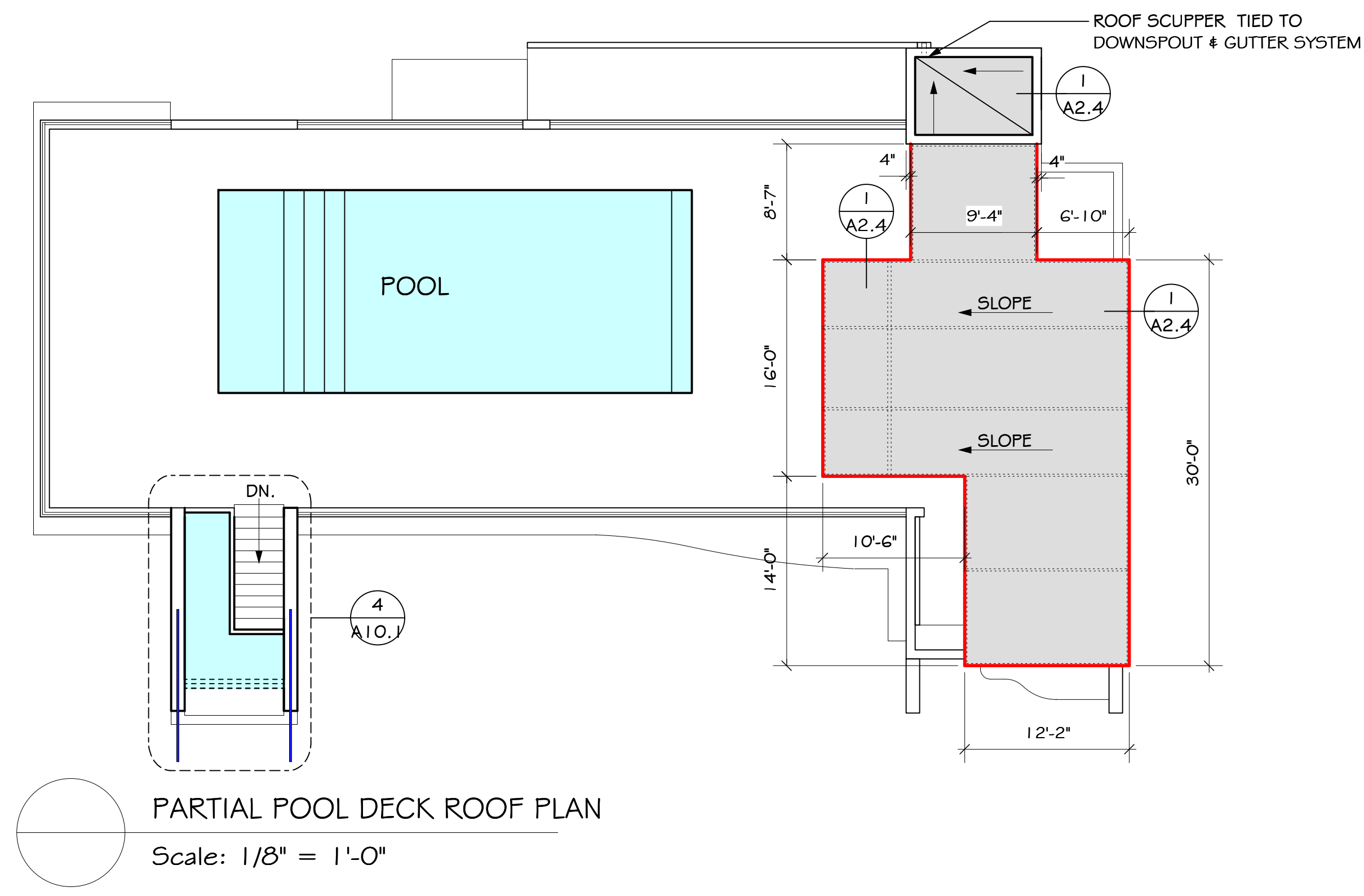
González Architects
 Hospitality

PROJECT:
SPINDRIFT HOTEL
 1212 SIMONTON STREET
 KEY WEST, FLORIDA 33040

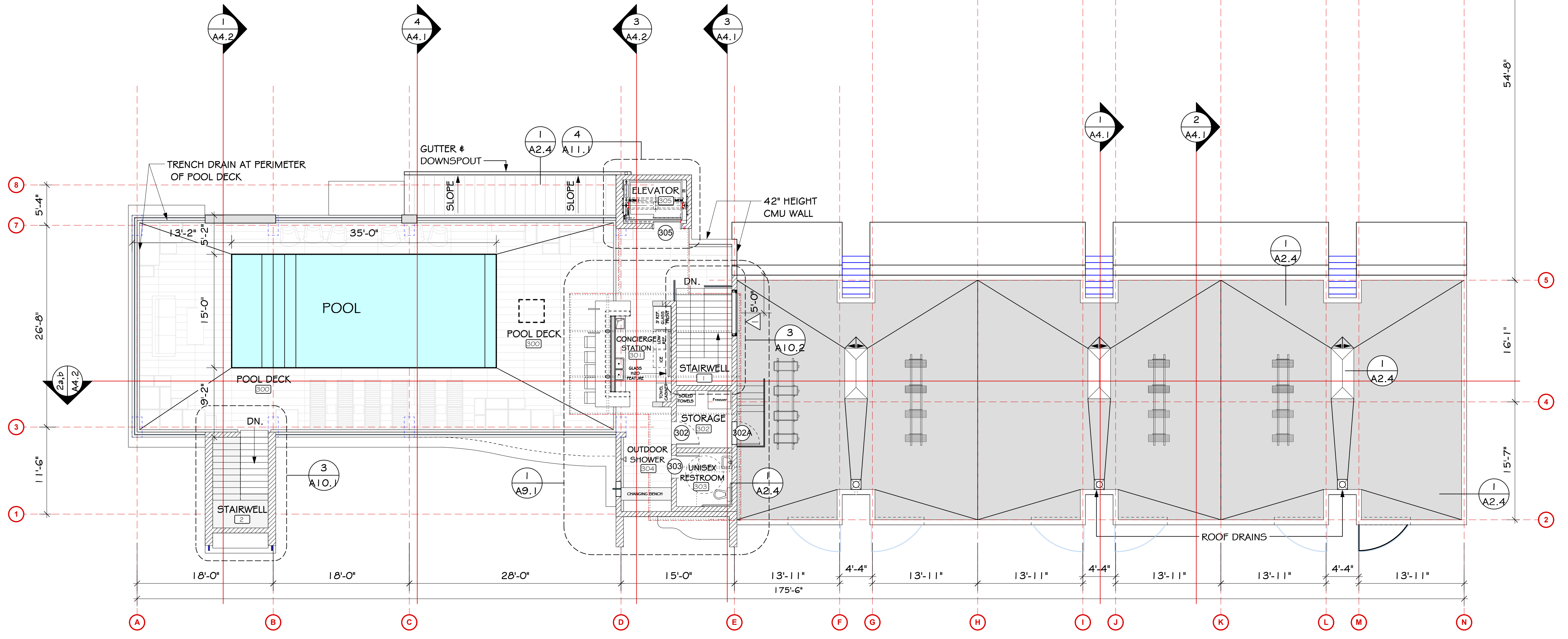
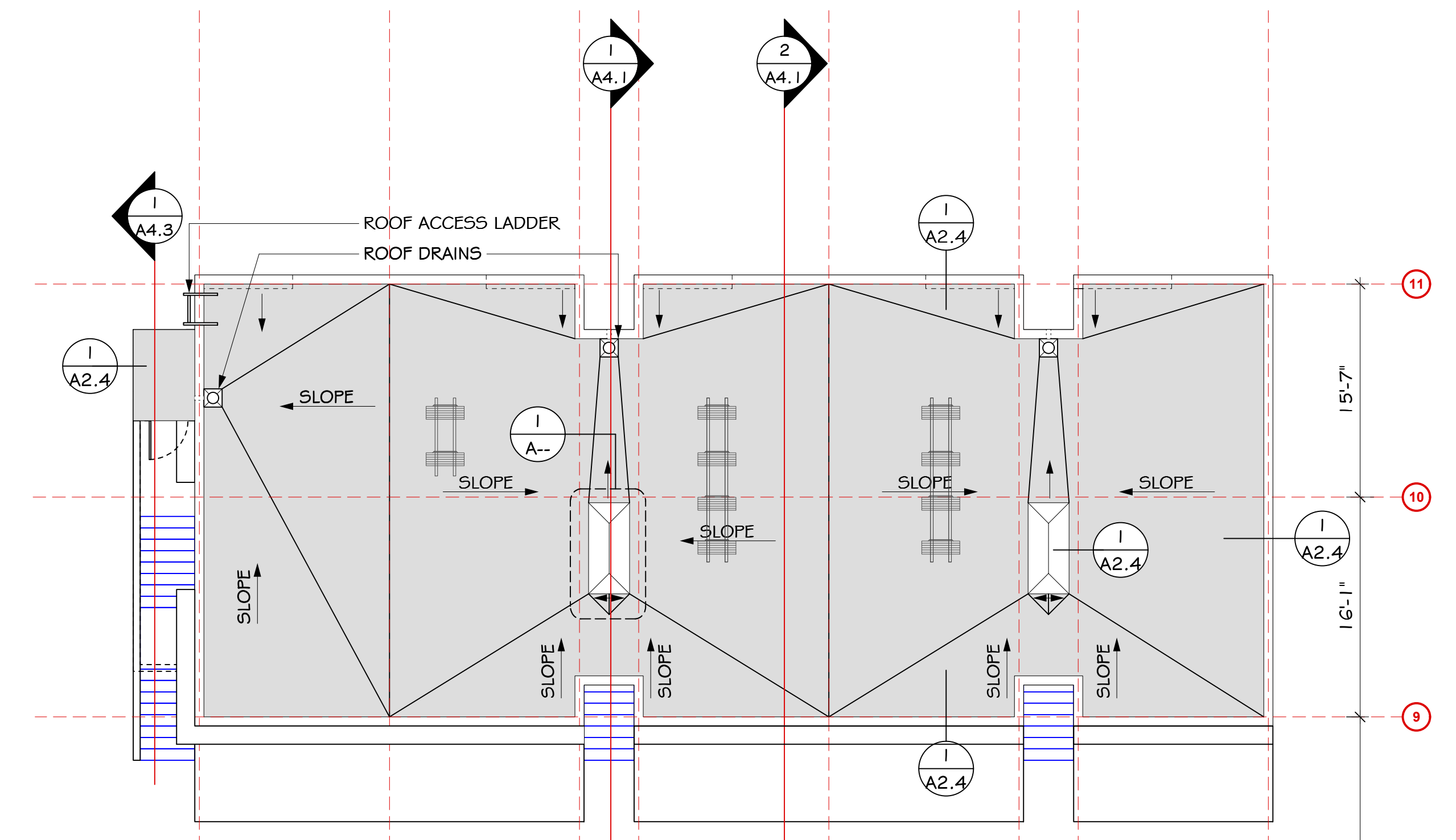
DRAWING TITLE:
**ROOF DECK PLAN &
 ROOF PLANS**

PROJECT NUMBER:
 14.12
 DRAWN: TSN/KMP/MMP
 CHECKED: PMP
 DATE: 02-25-15

SHEET #
A2.3

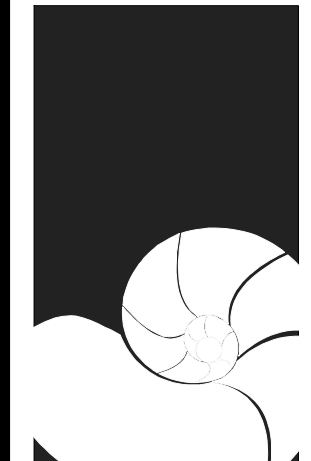


PARTIAL POOL DECK ROOF PLAN
 Scale: 1/8" = 1'-0"



SPINDRIFT 3RD LEVEL PLAN & PARTIAL ROOF PLAN
 Scale: 1/8" = 1'-0"

REVISIONS	DATE



PETER PIKE ARCHITECT
 471 U.S. HIGHWAY 1
 SUITE 101
 KEY WEST, FL 33040
 305-296-1692

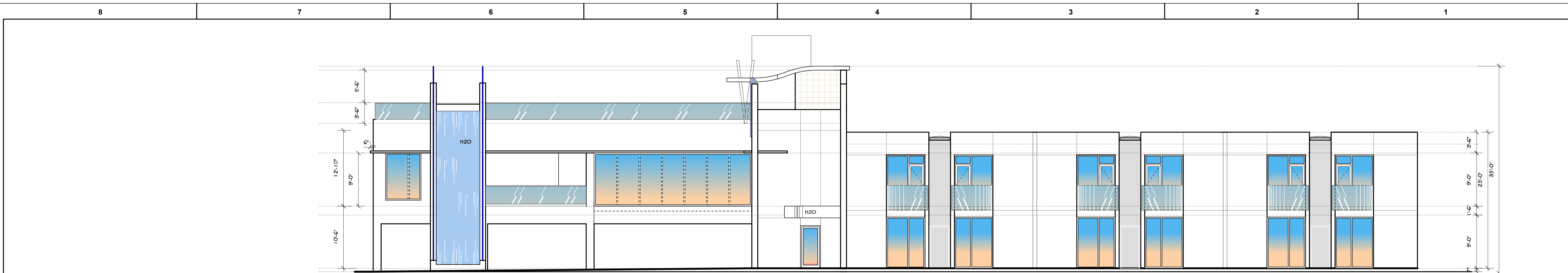
González Architects Hospitality

PROJECT: SPINDRIFT HOTEL
 1212 SIMONTON STREET
 KEY WEST, FLORIDA 33040

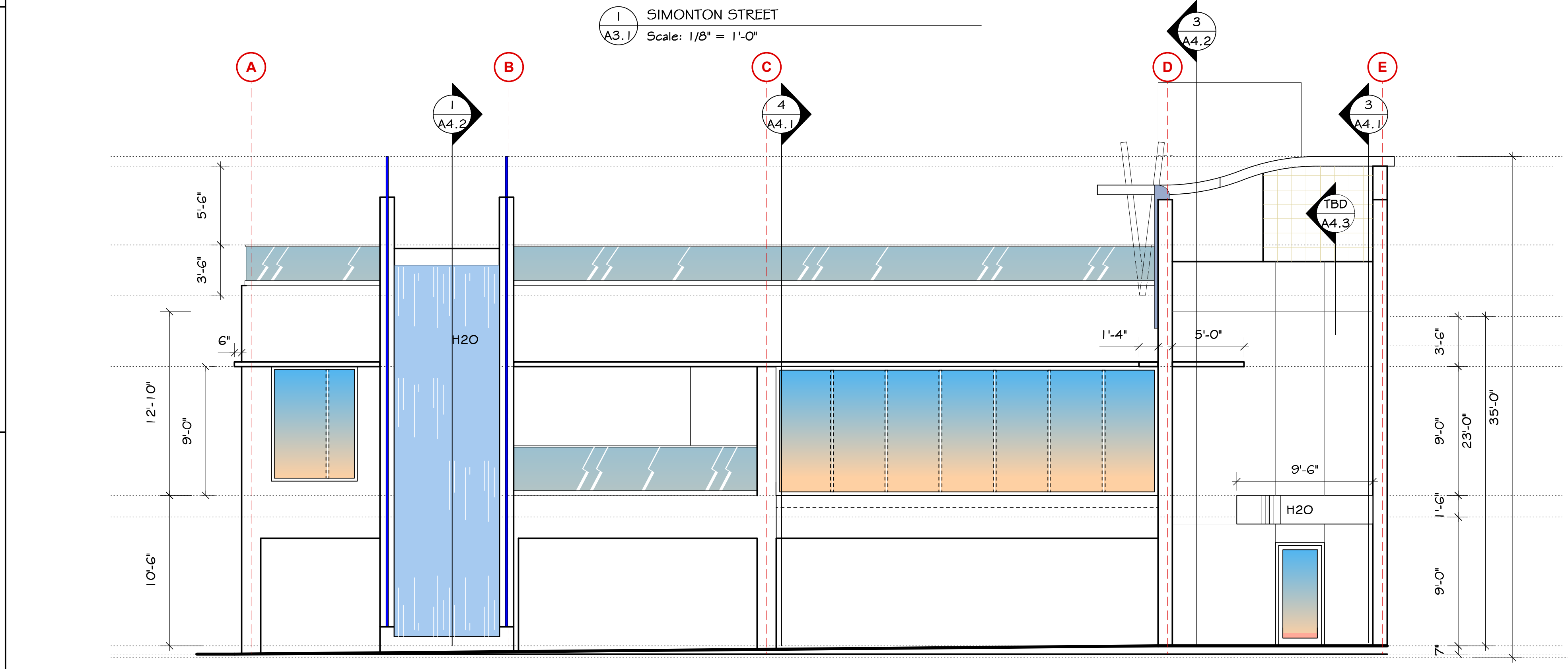
DRAWING TITLE: ELEVATIONS

PROJECT NUMBER: 14.1.2
 DRAWN: TSN/KMP/MMP
 CHECKED: PMP
 DATE: 02-25-15

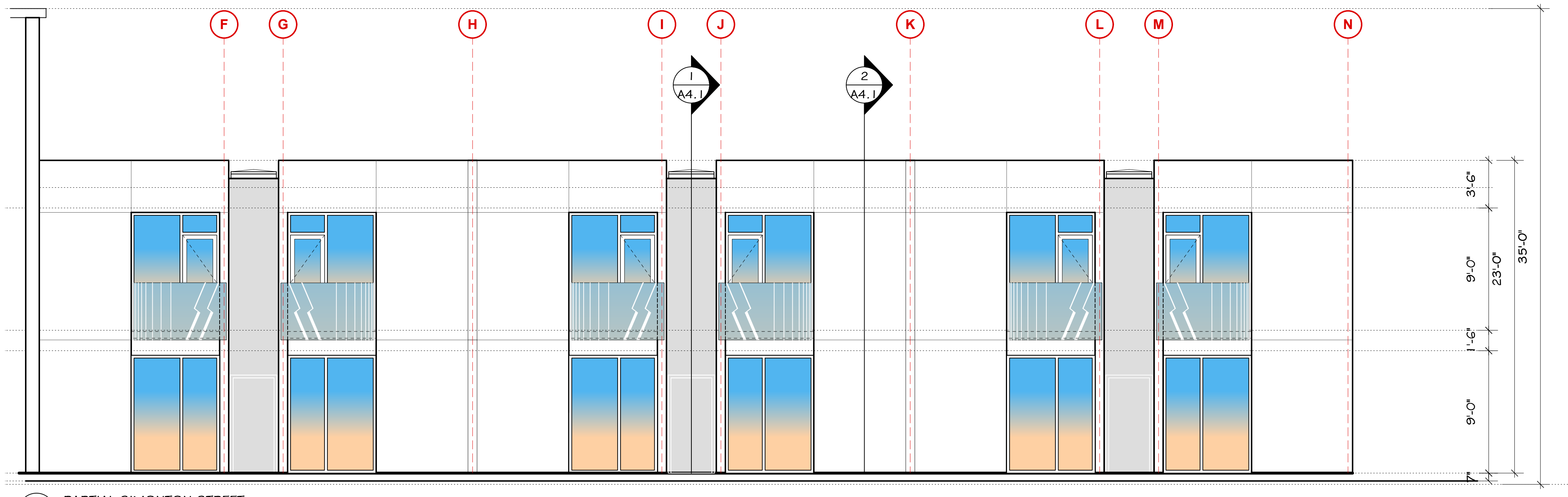
SHEET #
A3.1



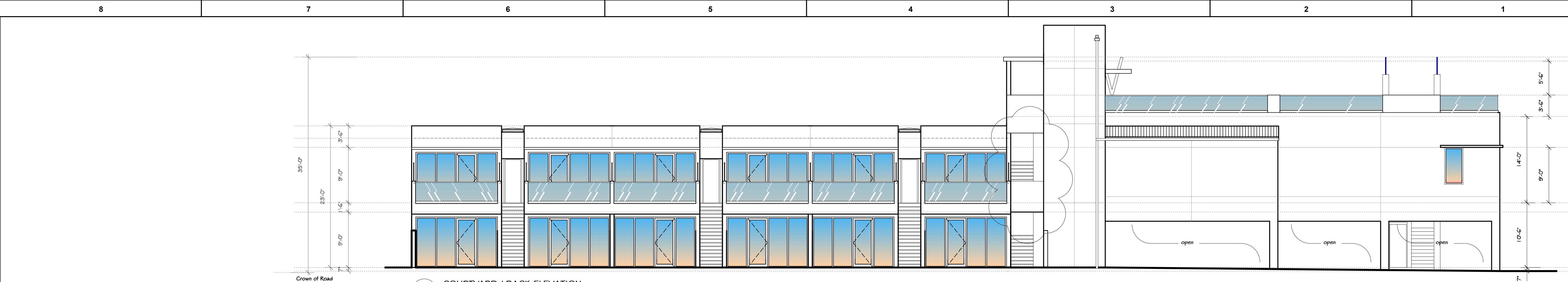
1 SIMONTON STREET
 A3.1 Scale: 1/8" = 1'-0"



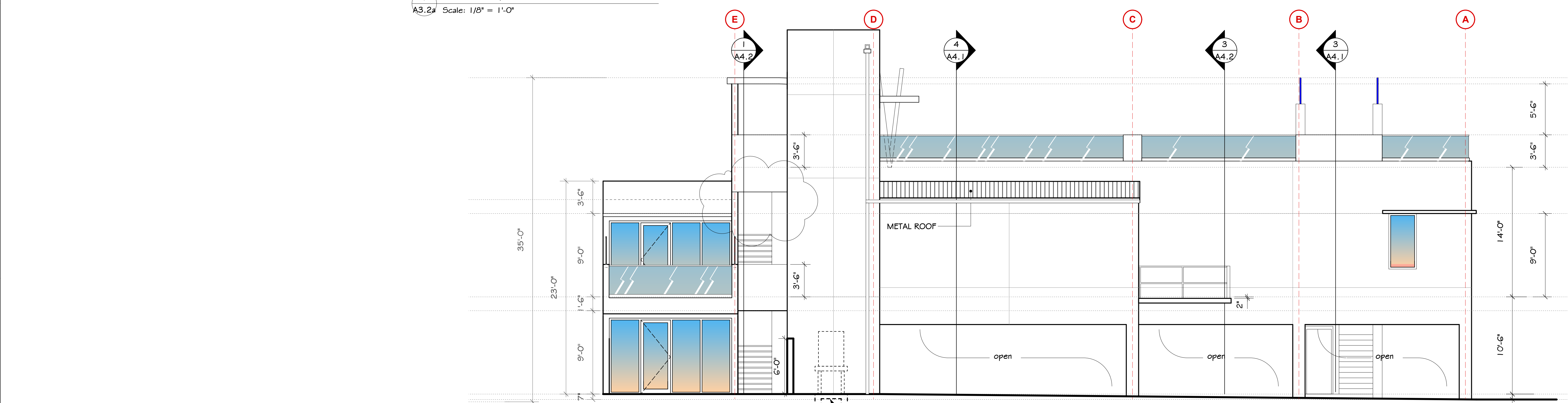
2 PARTIAL SIMONTON STREET
 A3.1 Scale: 3/16" = 1'-0"



3 PARTIAL SIMONTON STREET
 A3.1 Scale: 3/16" = 1'-0"

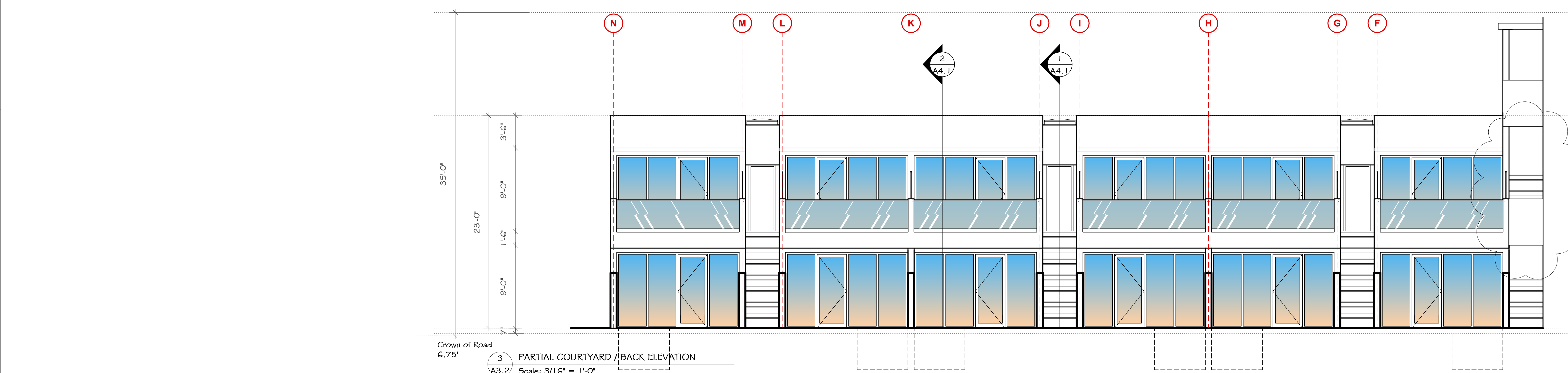


1 COURTYARD / BACK ELEVATION
A3.2a Scale: 1/8" = 1'-0"



2 PARTIAL COURTYARD / BACK ELEVATION
A3.2 Scale: 3/16" = 1'-0"

OUTLINE OF FUTURE GENERATOR & STAND / PLATFORM. SEE STRUCTURAL FOR STAND FOUNDATION DETAILS



3 PARTIAL COURTYARD / BACK ELEVATION
A3.2 Scale: 3/16" = 1'-0"

REVISIONS	DATE

PETER PIKE
ARCHITECT

471 U.S. HIGHWAY 1
SUITE 101
KEY WEST, FL 33040
305-296-1692

Gonzalez Architects
Hospitality

PROJECT:
SPINDRIFT HOTEL
1212 SIMONTON STREET
KEY WEST, FLORIDA 33040

DRAWING TITLE:
ELEVATIONS

PROJECT NUMBER:
14.12
DRAWN: TSN/KMP/MMP
CHECKED: PMP
DATE: 02-25-15

SHEET #
A3.2

REVISIONS	DATE

PETER PIKE ARCHITECT
 471 U.S. HIGHWAY 1
 SUITE 101
 KEY WEST, FL 33040
 305-296-1692

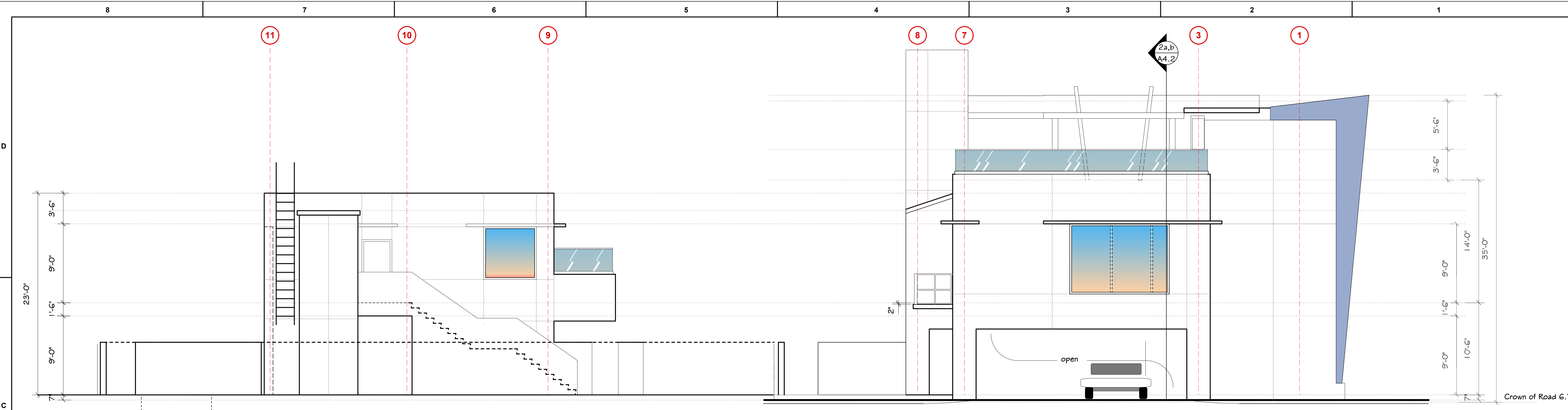
González Architects Hospitality

PROJECT: SPINDRIFT HOTEL
 1212 SIMONTON STREET
 KEY WEST, FLORIDA 33040

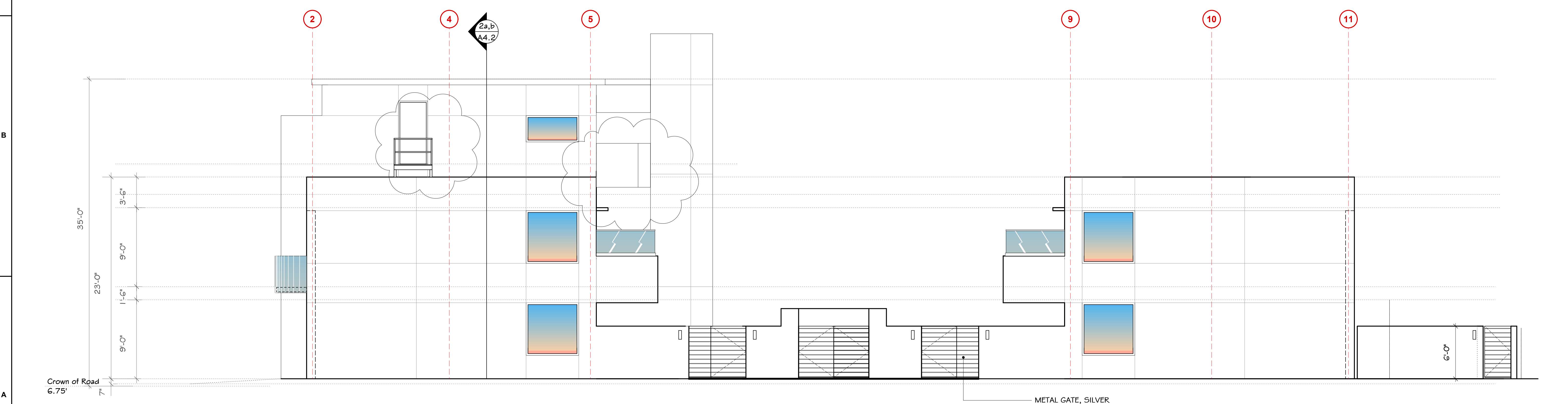
DRAWING TITLE: ELEVATIONS

PROJECT NUMBER: 14.12
 DRAWN: TSN/KMP/PMP
 CHECKED: PMP
 DATE: 02-25-15

SHEET #
A3.3



1 UNITED STREET
 A3.1 Scale: 3/16" = 1'-0"



2 LOUISA STREET
 A3.3 Scale: 3/16" = 1'-0"

REVISIONS	DATE

PETER PIKE ARCHITECT
 471 U.S. HIGHWAY 1
 SUITE 101
 KEY WEST, FL 33040
 305-296-1692

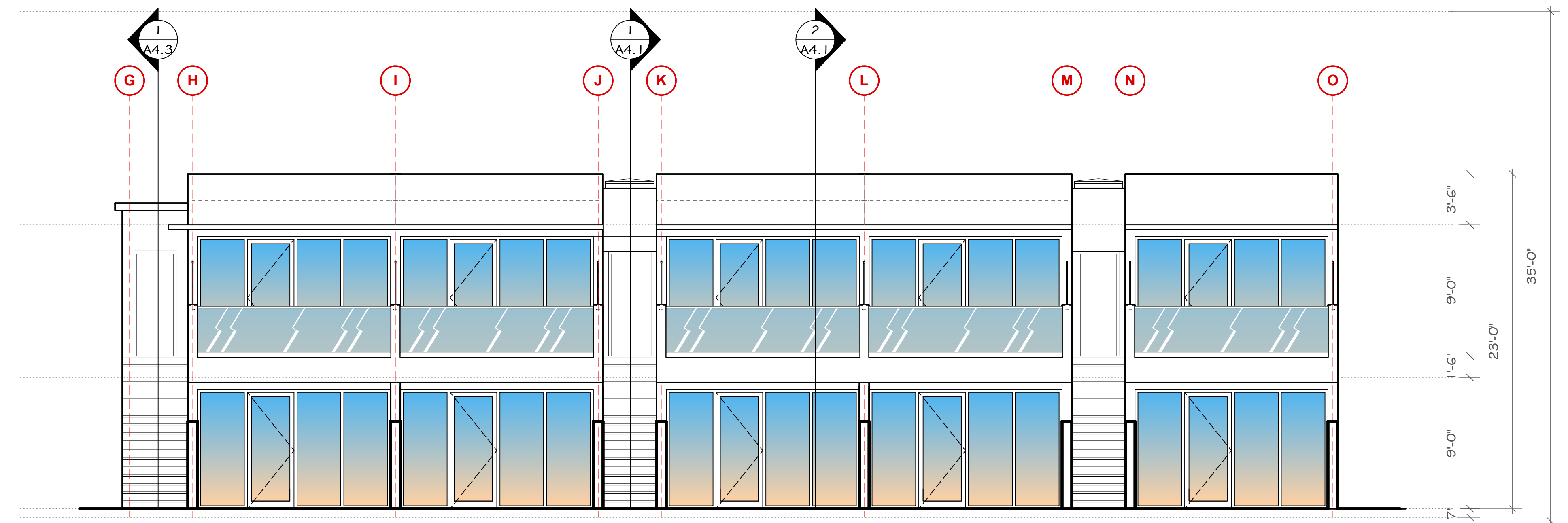
González Architects Hospitality

PROJECT:
SPINDRIFT HOTEL
 1212 SIMONTON STREET
 KEY WEST, FLORIDA 33040

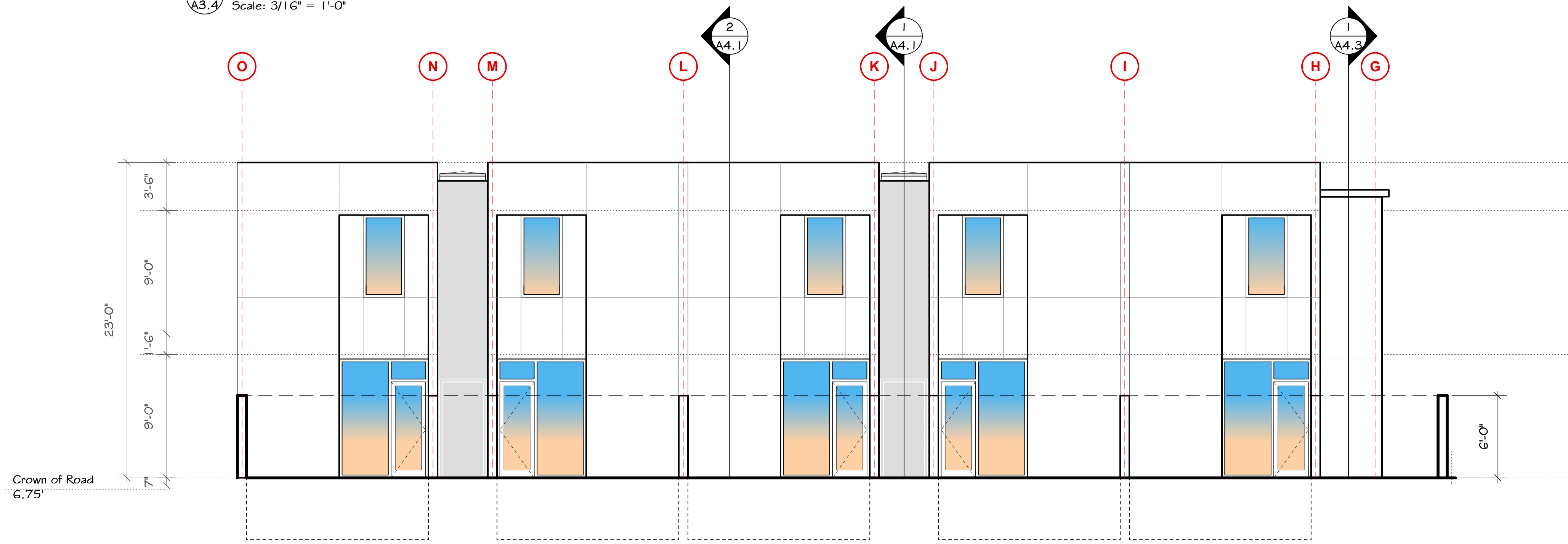
DRAWING TITLE:
 ELEVATIONS

PROJECT NUMBER:
 14.12
 DRAWN: TSN/KMP/MMP
 CHECKED: PMP
 DATE: 02-25-15

SHEET #
A3.4

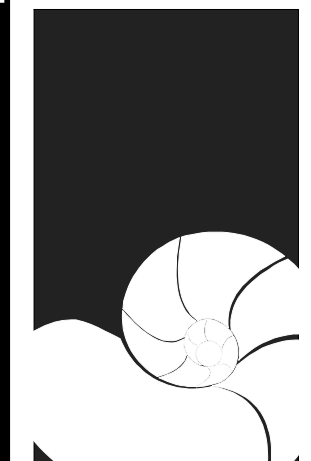


1
A3.4 COURTYARD ELEVATION
 Scale: 3/16" = 1'-0"



2
A3.4 PARTIAL BACK ELEVATION
 Scale: 3/16" = 1'-0"

REVISIONS	DATE



PETER PIKE
ARCHITECT

471 U.S. HIGHWAY 1
SUITE 101
KEY WEST, FL 33040
305-296-1692

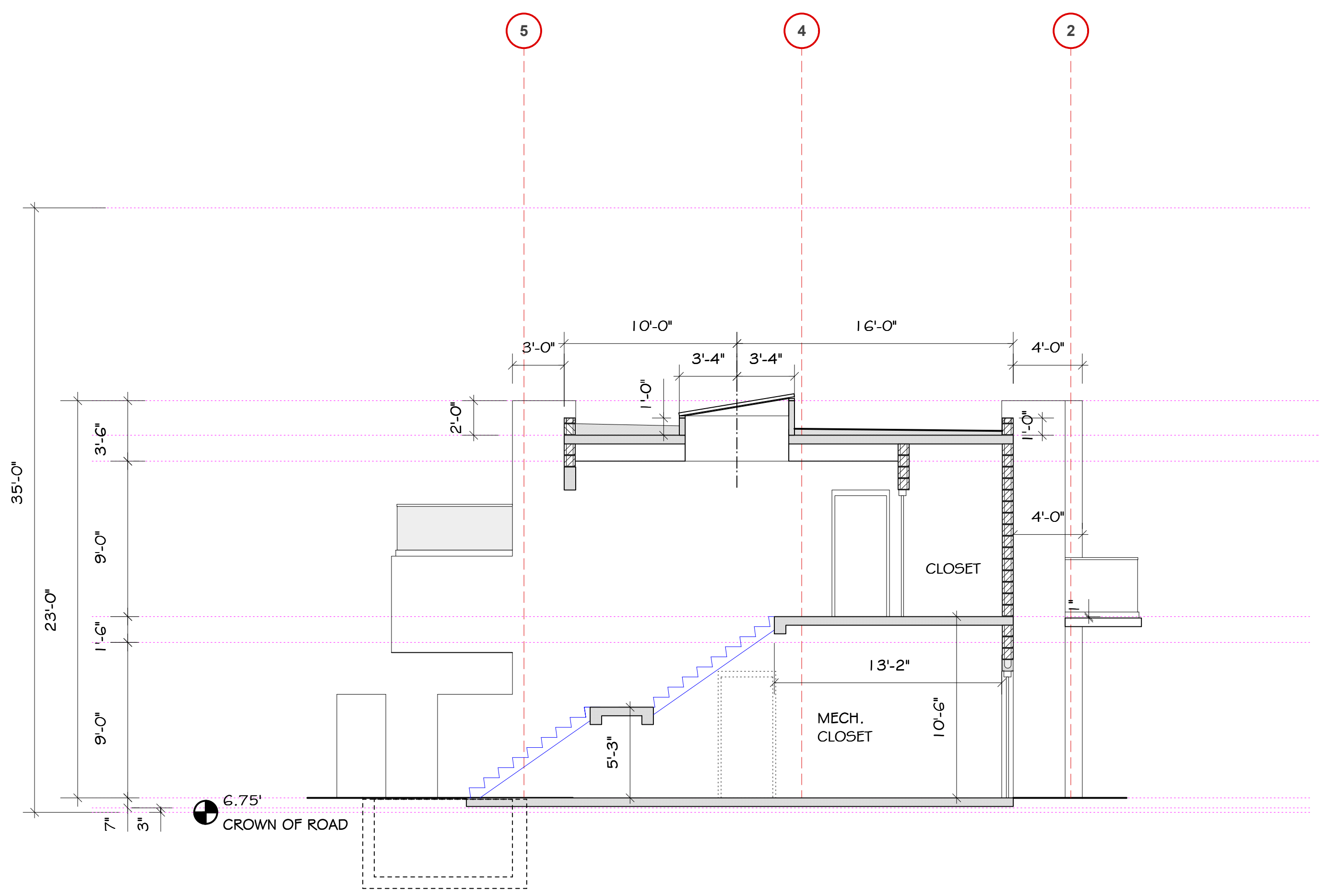
González Architects
Hospitality

PROJECT:
SPINDRIFT HOTEL
1212 SIMONTON STREET
KEY WEST, FLORIDA 33040

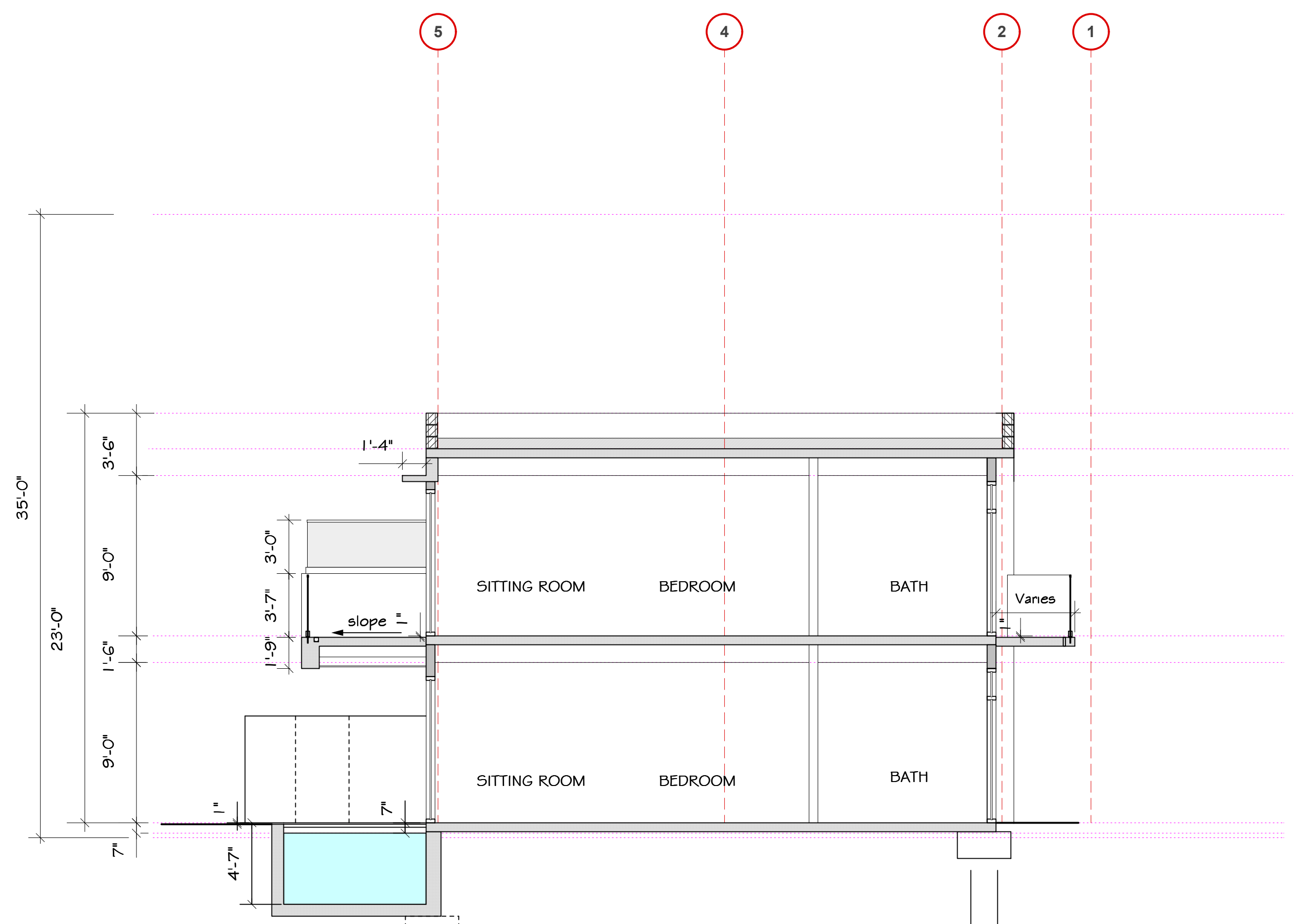
DRAWING TITLE:
SECTIONS

PROJECT NUMBER:
14.12
DRAWN: TSN/KMP/M
CHECKED: PMP
DATE: 02-25-15

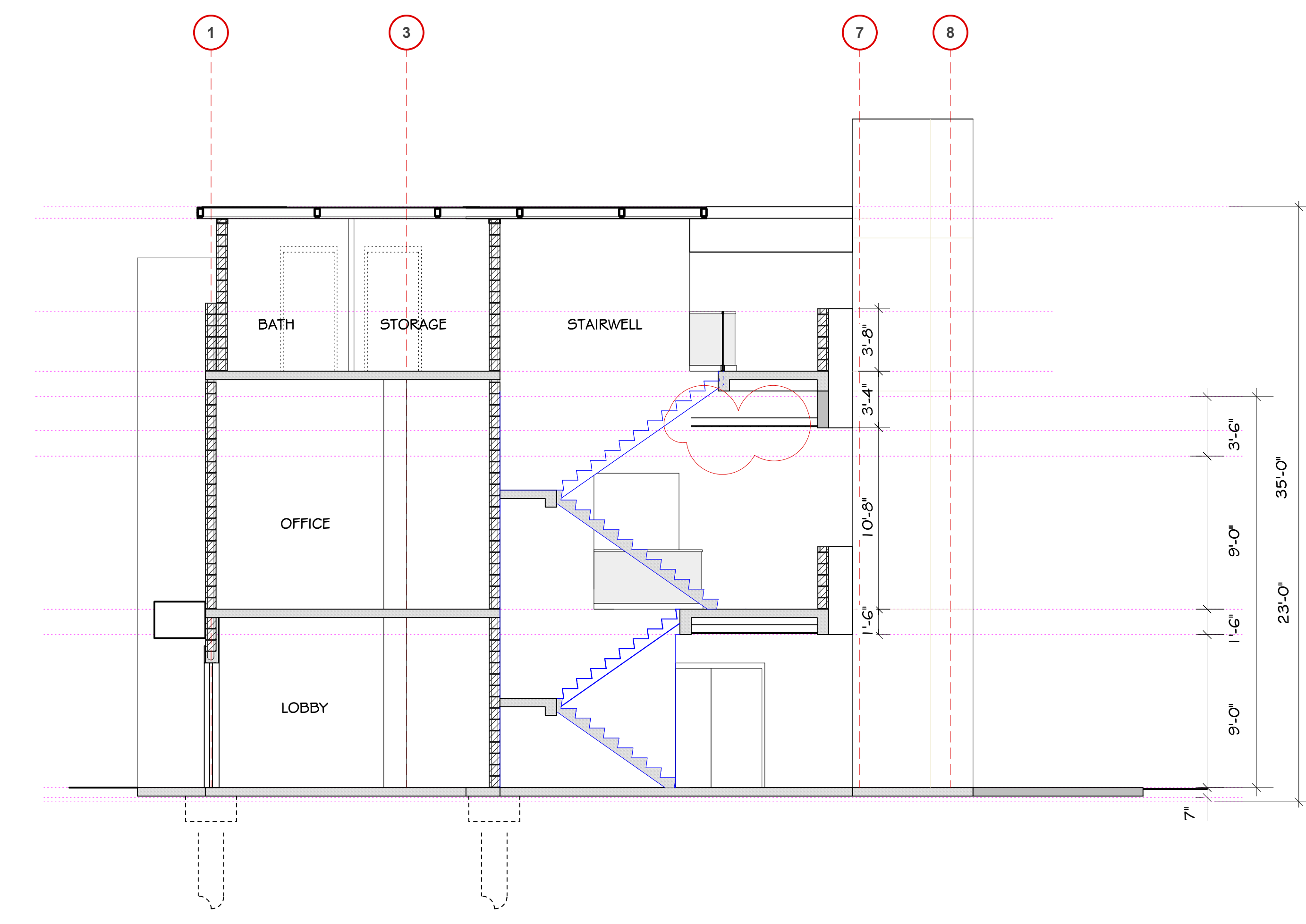
SHEET #
A4.1



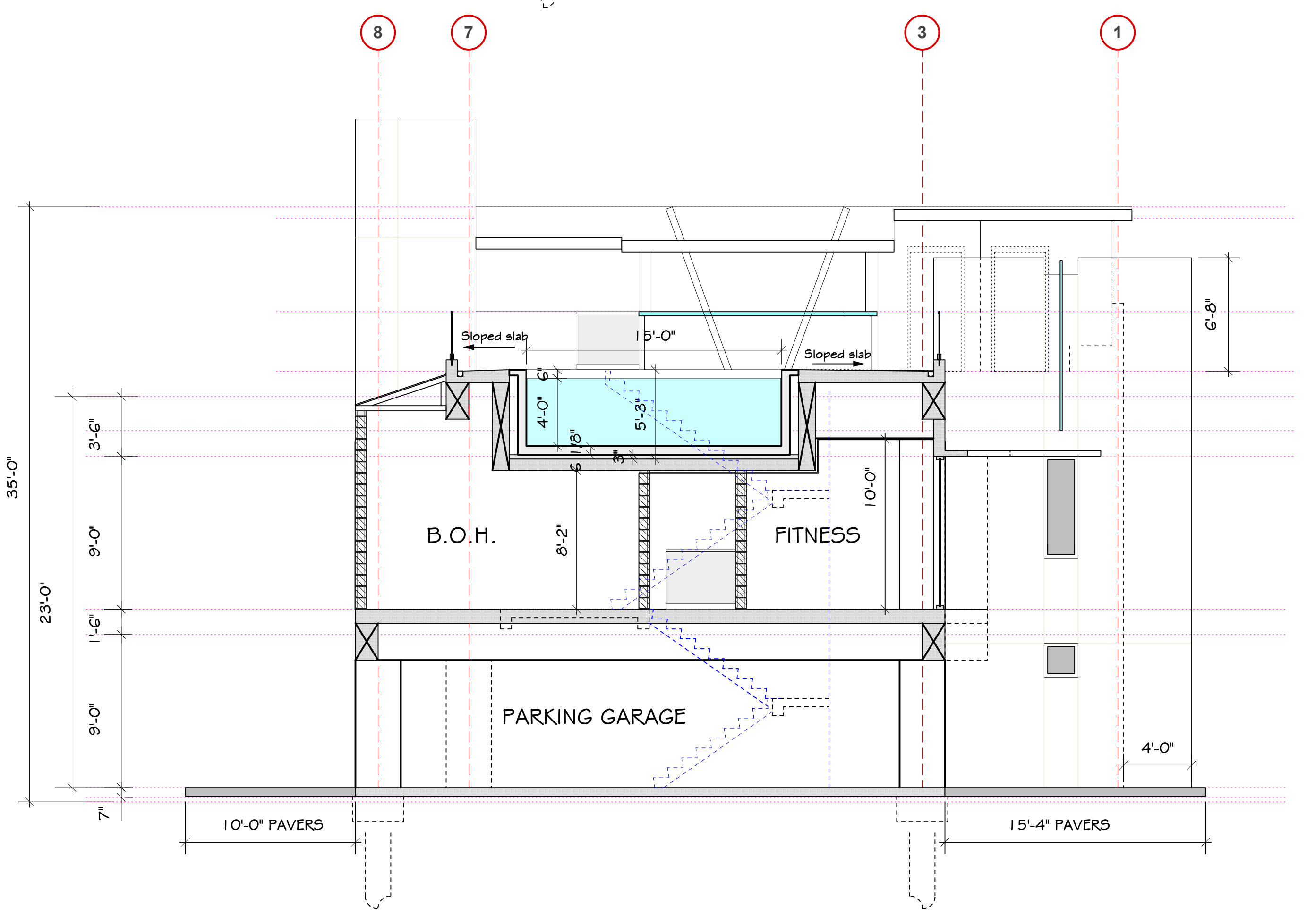
1 BUILDING SECTION
Scale: 3/16" = 1'-0"



2 BUILDING SECTION
Scale: 3/16" = 1'-0"

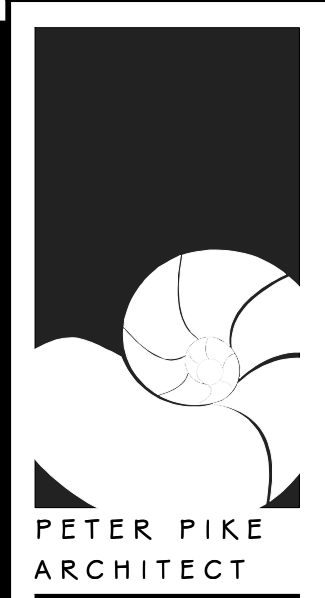


3 BUILDING SECTION
Scale: 3/16" = 1'-0"



4 BUILDING SECTION
Scale: 3/16" = 1'-0"

REVISIONS	DATE



PETER PIKE
ARCHITECT
471 U.S. HIGHWAY 1
SUITE 101
KEY WEST, FL 33040
305-296-1692

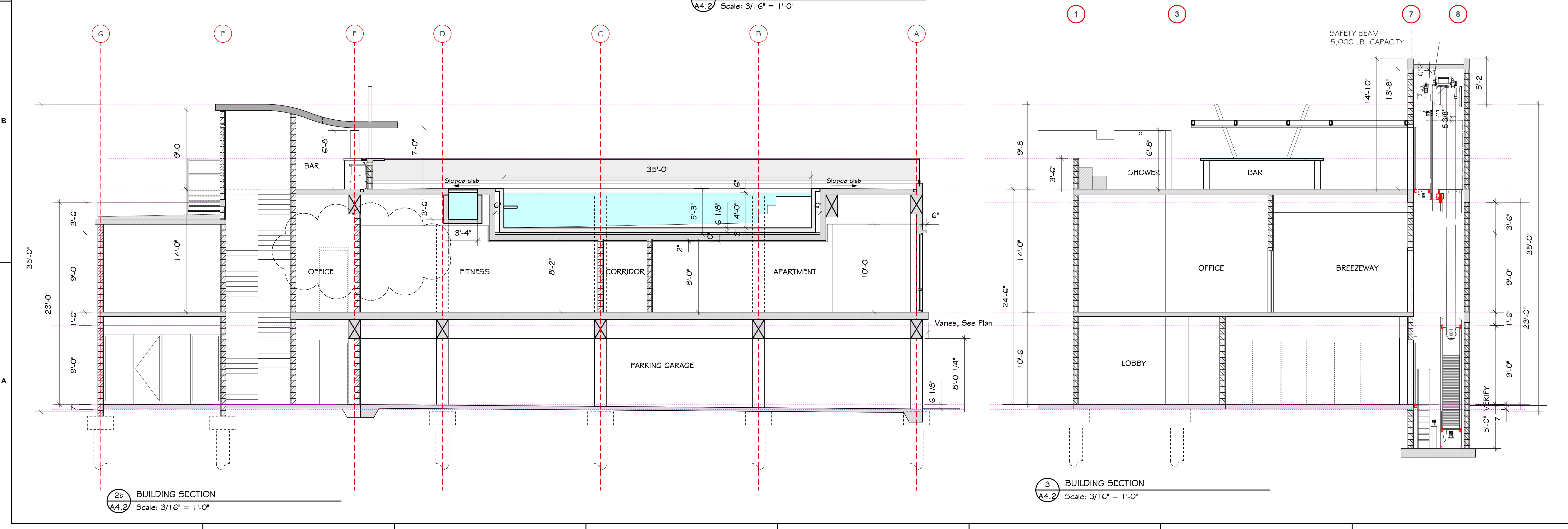
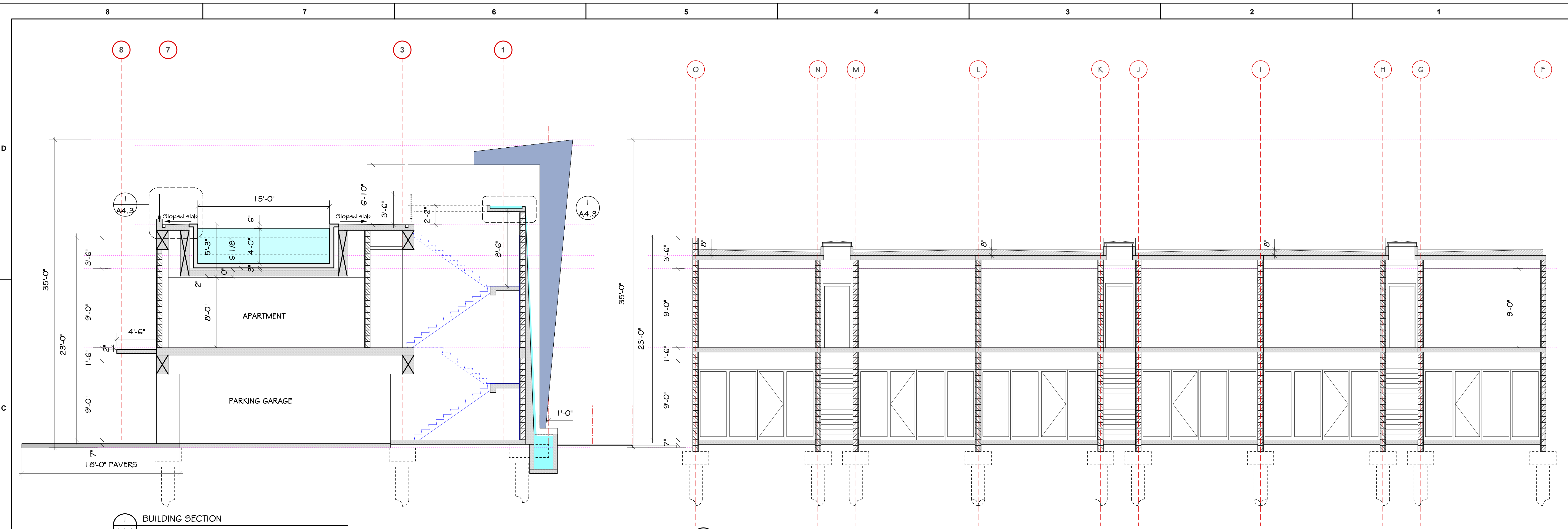


PROJECT:
SPINDRIFT HOTEL
1212 SIMONTON STREET
KEY WEST, FLORIDA 33040

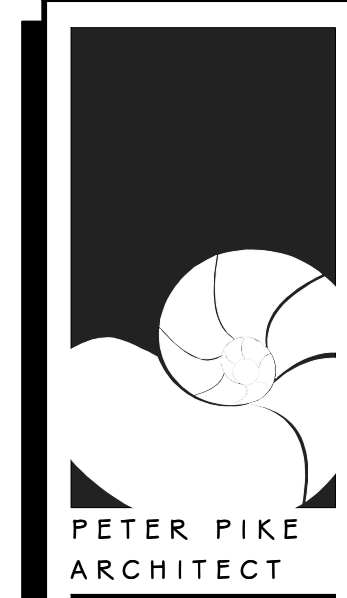
DRAWING TITLE:
SECTIONS

PROJECT NUMBER:
14.112
DRAWN: TSN/KMP/MMP
CHECKED: PMP
DATE: 02-25-15

SHEET #
A4.2



REVISIONS	DATE



471 U.S. HIGHWAY 1
SUITE 101
KEY WEST, FL 33040
305-296-1692

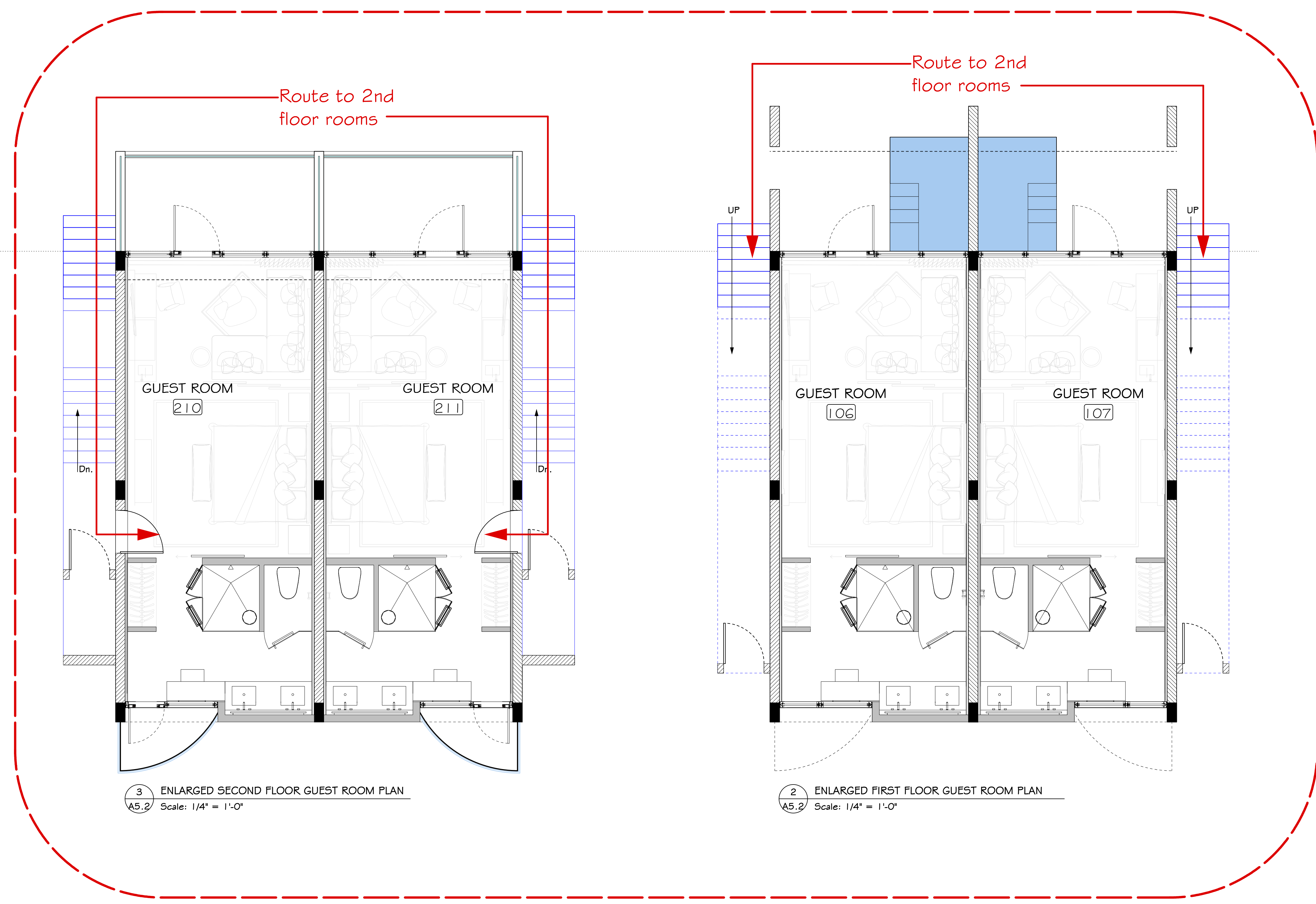


PROJECT:
SPINDRIFT HOTEL
1212 SIMONTON STREET
KEY WEST, FLORIDA 33040

DRAWING TITLE:
**ENLARGED PLANS
FITNESS., LOBBY**

PROJECT NUMBER:
14.12
DRAWN: TSN/KMP/MMP
CHECKED: PMP
DATE: 02-25-15

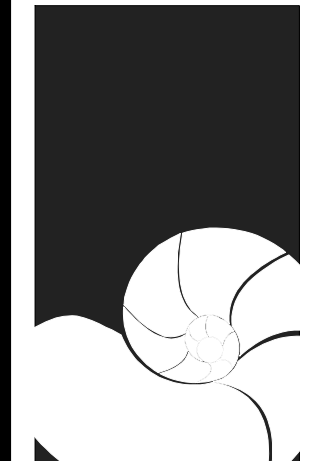
SHEET #
A5.2



3 ENLARGED SECOND FLOOR GUEST ROOM PLAN
A5.2 Scale: 1/4" = 1'-0"

2 ENLARGED FIRST FLOOR GUEST ROOM PLAN
A5.2 Scale: 1/4" = 1'-0"

REVISIONS	DATE



**PETER PIKE
ARCHITECT**

471 U.S. HIGHWAY 1
SUITE 101
KEY WEST, FL 33040
305-296-1692

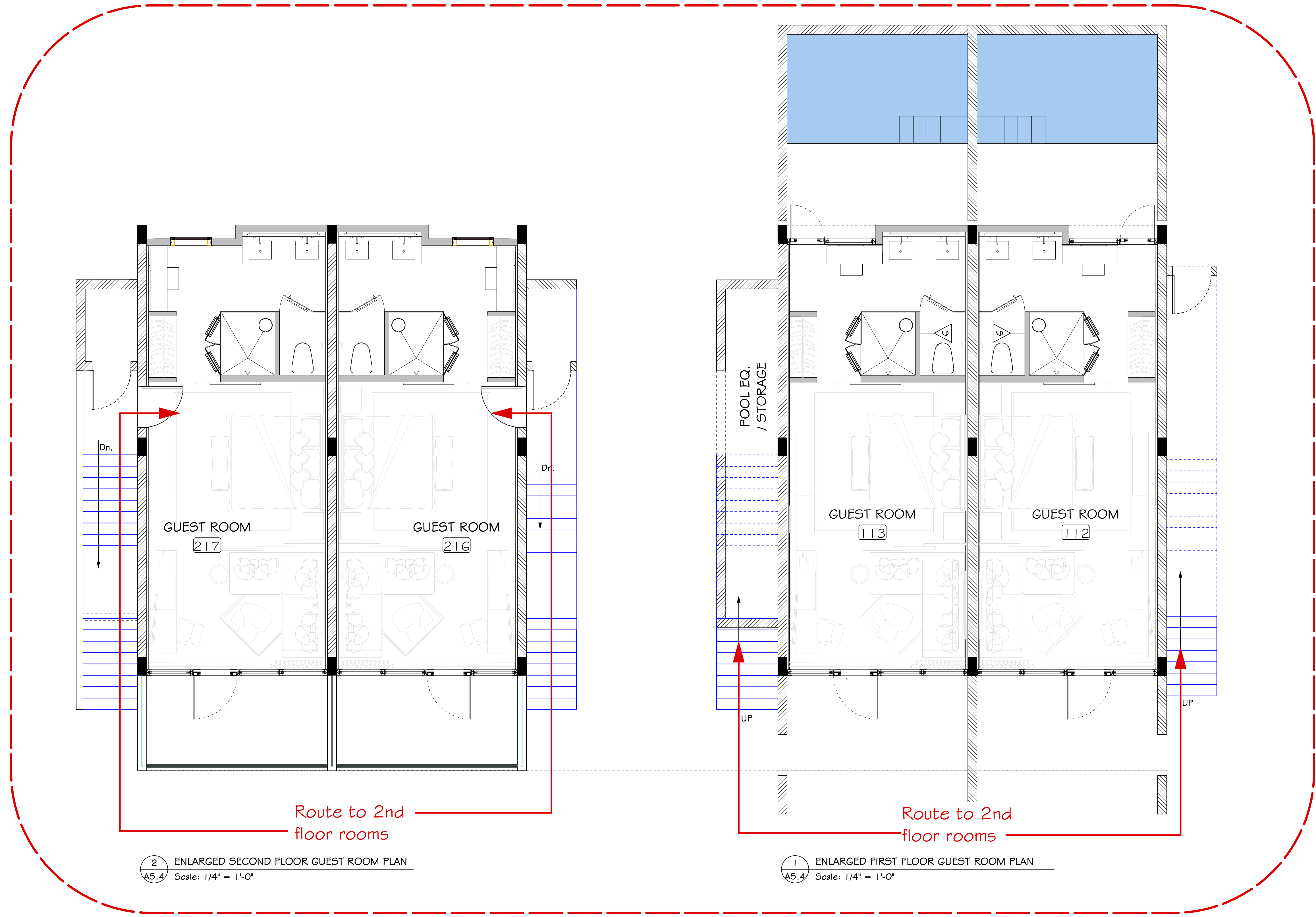
**González Architects
Hospitality**

**PROJECT:
SPINDRIFT HOTEL**
1212 SIMONTON STREET
KEY WEST, FLORIDA 33040

**DRAWING TITLE:
ENLARGED GUEST
ROOM PLANS**

PROJECT NUMBER:
14.12
DRAWN: TSN/KMP/MMP
CHECKED: PMP
DATE: 02-25-15

SHEET #
A5.3



2 ENLARGED SECOND FLOOR GUEST ROOM PLAN
A5.4 Scale: 1/4" = 1'-0"

1 ENLARGED FIRST FLOOR GUEST ROOM PLAN
A5.4 Scale: 1/4" = 1'-0"

Route to 2nd floor rooms

Route to 2nd floor rooms

8

7

6

5

4

3

2

1

8

7

6

5

4

3

2

1