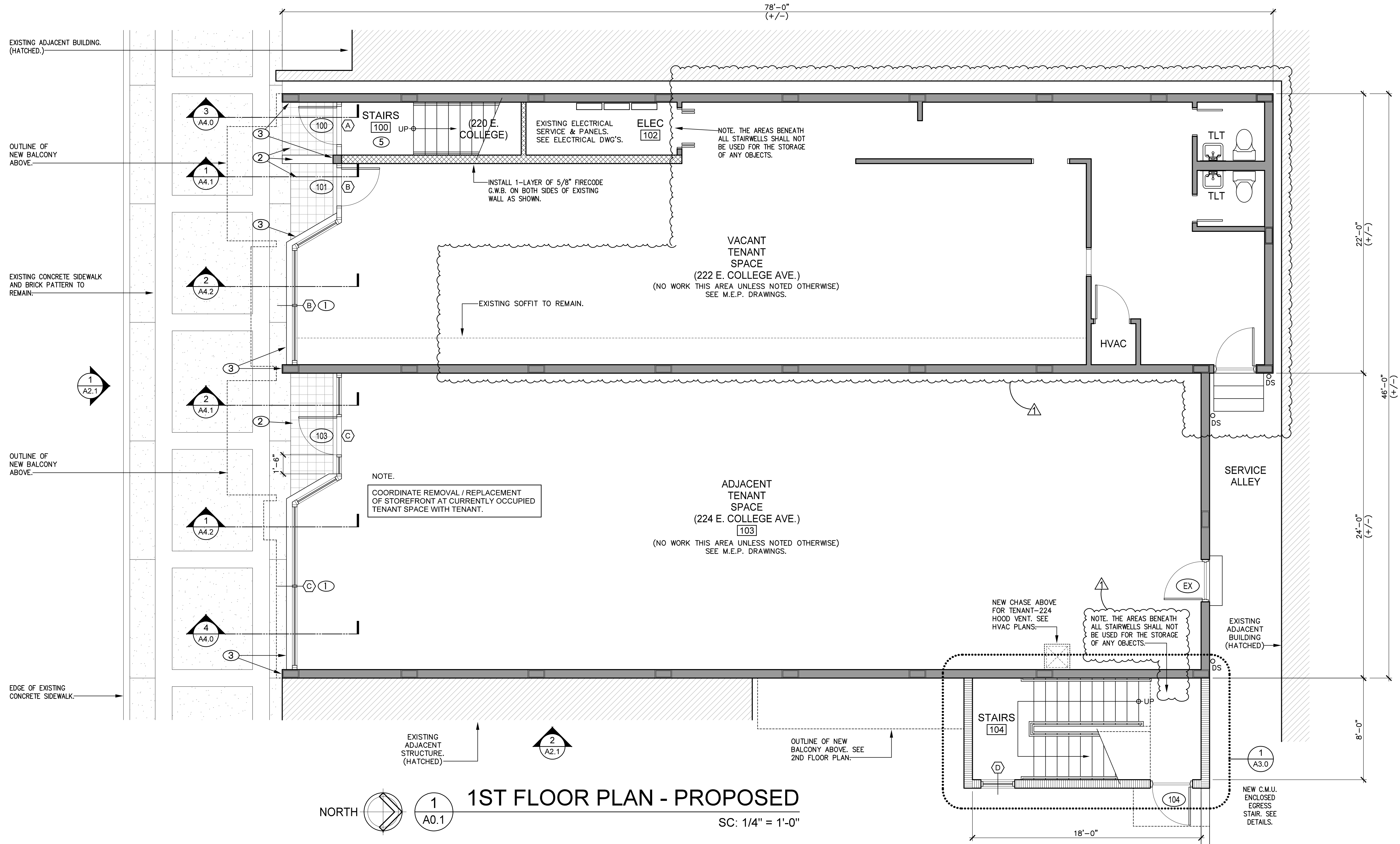


E. COLLEGE AVENUE



NORTH 1 A0.1 **1ST FLOOR PLAN - PROPOSED** SC: 1/4" = 1'-0"

NOTES

- NOTES - PROPOSED**
(THIS SHEET ONLY)
- NOTE 1. ALL DIMENSIONS TO EXISTING WALLS ARE TO FACE OF EXISTING C.M.U. ALL DIMENSIONS TO NEW STUD WALLS ARE TO THE FACE OF STUDS.
 - NOTE 2. INSTALL SOUND ATTENUATION BATTS INSULATION WITHIN ALL NEW INTERIOR WALLS UP TO CEILING HEIGHT. (U.O.N.)
 - NOTE 3. INSTALL SOLID BLOCKING WITHIN WALLS WHERE REQUIRED FOR NEW EQUIPMENT, ACCESSORIES, AND TRIM.
 - NOTE 4. IT IS THE CONTRACTOR'S RESPONSIBILITY TO VERIFY AND COORDINATE MASONRY COURSING, SILL, AND HEAD HEIGHTS. ALL NEW EXTERIOR FINISHES SHALL MATCH EXISTING TYPE AND SHALL ALIGN FLUSH AS SHOWN.
- DOOR NOTE.**
THE ELEVATION OF FLOOR SURFACES ON BOTH SIDES OF ALL DOORS SHALL NOT VARY MORE THAN 1/2". THE ELEVATION SHALL BE MAINTAINED ON BOTH SIDES OF A DOORWAY FOR A DISTANCE AT LEAST EQUAL TO THE WIDEST LEAF. (TYPICAL)

WALL LEGEND

- WALL LEGEND - PROPOSED**
(THIS SHEET ONLY)
- EXISTING PARTITION, DOOR, FINISH, FIXTURE, UTILITY, ETC., TO REMAIN. SEE PROPOSED PLANS, KEYNOTES, DEMOLITION NOTES, AND M.E.P. DRAWINGS.
 - EXISTING ADJACENT BUILDING TO REMAIN. NO WORK AT THIS AREA. SEE DEMOLITION NOTES, PROPOSED PLANS, AND M.E.P. DRAWINGS.
 - INDICATES NEW STUD FRAMED CONSTRUCTION. SEE SECTIONS, DETAILS, AND ELEVATIONS FOR ADDITIONAL INFORMATION. SEE ALSO DEMOLITION PLAN / NOTES.
 - INDICATES NEW CMU CONSTRUCTION. SEE SECTIONS, DETAILS, AND ELEVATIONS FOR ADDITIONAL INFORMATION. SEE DEMOLITION PLAN / NOTES.
 - INDICATES NEW 1-HOUR FIRE RATED, STUD FRAMED WALL ASSEMBLY. SEE RATED WALL DETAILS.

KEY NOTES

- KEYNOTES - PROPOSED**
(THIS SHEET ONLY)
- ① NEW ALUMINUM FRAMED WINDOW UNIT. SEE EXTERIOR ELEVATIONS AND GLAZING SCHEDULE.
 - ② INSTALL NEW FINISHED FLOORING AT PREVIOUS TILED ENTRY AREAS. MATCH EXISTING SLOPES.
 - ③ INSTALL NEW FINISH AS SCHEDULED. SEE ELEVATIONS AND WALL SECTIONS.

CONN ARCHITECTS & ASSOCIATES, INC. ALL RIGHTS RESERVED. ANY REPRODUCTION OF THESE DOCUMENTS WITHOUT THE WRITTEN PERMISSION OF CONN ARCHITECTS & ASSOCIATES, INC. IS STRICTLY PROHIBITED. THESE DOCUMENTS MAY BE REPRODUCED, STORED IN A RETRIEVABLE SYSTEM, OR TRANSMITTED IN ANY FORM OR BY ANY MEANS, ELECTRONIC, MECHANICAL, PHOTOCOPYING, RECORDING, OR OTHERWISE, WITHOUT THE PRIOR WRITTEN PERMISSION OF CONN ARCHITECTS & ASSOCIATES, INC.

RENOVATION & REMODEL for COLLEGE STATION
 220 E. COLLEGE AVE. TALLAHASSEE, FL.
1ST FLOOR PLAN - PROPOSED

CONN ARCHITECTS
 & ASSOCIATES
 196-C Buford Blvd. Tallahassee, Florida 32308 • Phone/Fax: 850-978-8784
 www.connandassociates.com • License No. AA C0016162

DATE	DEC. 11, 2014
DRAWN BY	B.K.
REVISED	
	FEB. 13, 2015
JOB NO.	14-174
DATE	
SHEET NUMBER	A1.1

ISSUED FOR PERMITTING