

1 LEFT SIDE ELEVATION (West Face)
1/4" = 1'-0"

- 1 EXIST. CONC. BEAM OR TIE BEAM TO REMAIN (SEE STRUCT. DWG'S.)
- 2 EXIST. CONC. COLUMN TO REMAIN (SEE STRUCT. DWG'S.)
- 3 EXIST. STUCCO FINISHED CONC. OR 8" MASONRY TO REMAIN.
- 4 EXIST. PAINTED, EXPOSED 8" x8" STACKED MASONRY WALL TO REMAIN.
- 5 EXIST. HEAVY TIMBER WD. STRUCTURE TO REMAIN.
- 6 EXIST. EXPOSED WD. LOUVERS TO REMAIN.
- 7 EXIST. PAINTED MTL. STAIR, SAFEGUARD & HAND RAIL TO REMAIN. (TYP.)
- 8 EXIST. DOOR or WINDOW UNIT TO REMAIN (SEE DOOR & WINDOW SCHEDULES)
- 9 EXIST. PAINTED MTL. SECURITY SCREEN INFILL TO REMAIN. (TYP.)
- 10 EXIST. PAINTED MTL. SECURITY GATE TO REMAIN. (TYP.)
- 11 NEW STUCCO FINISHED CONC. OR 8" MASONRY TO BE ADDED. (SEE STRUCT. DWG'S.)
- 12 NEW PAINTED, EXPOSED 8" x8" STACKED MASONRY WALL TO BE ADDED & MATCH EXIST. (SEE STRUCT. DWG'S.)
- 13 REINF. CONCRETE BEAM OR TIE BEAM. (SEE STRUCT. DWG'S.)
- 14 MIN. 1/2" 2-COAT CEMENT STUCCO FINISH OVER CONC. OR 8" MASONRY
- 15 MIN. 3/4" PAINTED STUCCO FINISHED EXTERIOR WALL OVER PLYWD. SHEATHING ON GALV. MTL. FRAMING AT 16" O.C. (TYP. - SEE STRUCT. DWG'S.)
- 16 PAINTED, FLUSH MTL. DOOR UNIT (SEE DOOR SCHEDULE)
- 17 ALUMINUM DOOR UNIT W/ IMPACT RESISTANT GLAZING (SEE DOOR SCHEDULE)
- 18 ALUMINUM WINDOW & DOOR UNIT W/ IMPACT RESISTANT GLAZING (SEE DOOR & WINDOW SCHEDULES)
- 19 ALUMINUM WINDOW W/ IMPACT RESISTANT GLAZING (SEE TO WINDOW SCHEDULE)
- 20 IMPACT RATED, PAINTED, MOTORIZED STL. COILING ROLL-UP OVERHEAD DOOR (SEE DOOR SCHEDULE)
- 21 CLR. ANOD. FIXED ALUM. IMPACT RESISTANT VENT. LOUVER (REFER TO WINDOW SCHEDULE)
- 22 NEW PAINTED MTL. PAN ROOF SYSTEM OVER RIGID INSUL. (SEE ROOFING SPEC. & N.O.A.)
- 23 GALV. MTL. DRIP FLASHING OVER PAINTED P.T. 1x4 NAILER ON NEW or EXIST. 2x8 WOOD FASCIA (TYP.)
- 24 HI-LOW DRINKING FOUNTAIN (SEE PLUMB'G. DWG'S.)



SYNALOVSKI ROMANK SAYE
Architecture • Planning • Interior Design

1800 Eller Drive, Suite 500
Fort Lauderdale, FL 33316
T 954.961.6806
F 954.961.6807
www.synalovskid.com

Manuel Synalovski, AIA
AR 0011628
SEAL

LICENSE NO. AA26001863

WINDMILL PARK

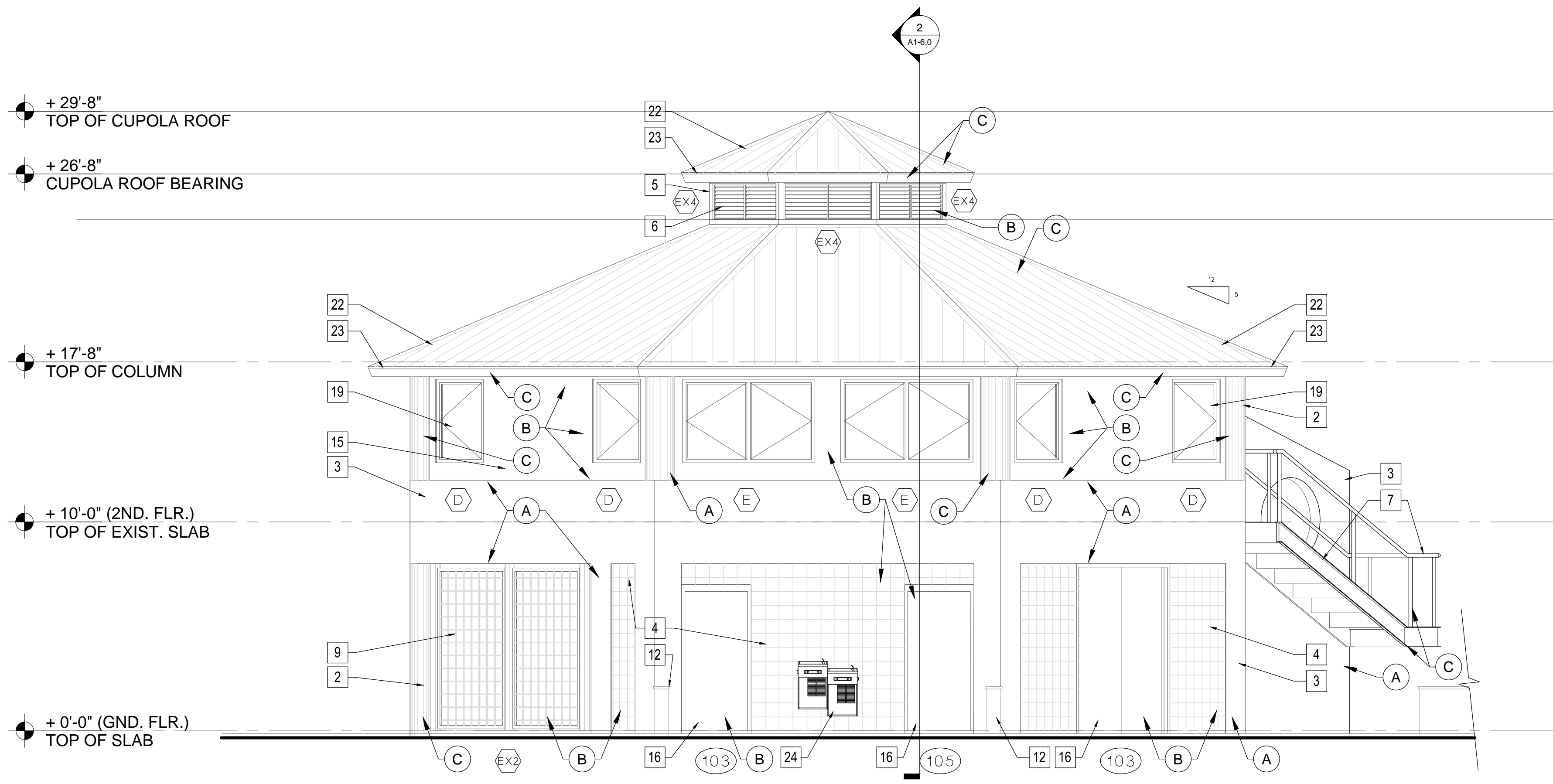
700 LYONS ROAD
COCONUT CREEK, FL 33063

CLIENT: CITY OF COCONUT CREEK

REV	DATE	DESCRIPTION

ADA VERTICAL ACCESSIBILITY WAIVER HAS BEEN APPLIED FOR UNDER FRAC. ACCESSIBILITY CODE (2014), SECTION 202, EXISTING BUILDINGS & FACILITIES, 2014 PARAGRAPH 202.1.

COLOR CODE LEGEND, ELEVATION NOTE LEGEND AND ELEVATION INFO CALLOUTS ADDED



2 RIGHT SIDE ELEVATION (East Face)
1/4" = 1'-0"

3 ELEVATION NOTE LEGEND

- (A) SHERWIN WILLIAMS SW 7567 NATURAL TAN
- (B) SHERWIN WILLIAMS SW 7506 LOGGIA
- (C) SHERWIN WILLIAMS SW 6967 FRANK BLUE
(MTL. ROOF COLOR: POLIGON MTL. STRUCTURES, COLOR "REGAL BLUE")

4 COLOR CODE LEGEND

DESIGN DELIVERABLE: DRC REVIEW SET
ISSUE DATE: 12/14/15

PROJECT NUMBER: 1252-140622
DRAWN BY: KW
CHECKED BY: MR

Copyright (c) by SYNALOVSKI ROMANK SAYE
All Rights Reserved
SHEET TITLE:
EXISTING PAVILION ELEVATIONS

SHEET NUMBER:
A1-2.1