

WINDMILL PARK

700 LYONS ROAD
COCONUT CREEK, FL 33063

CLIENT: CITY OF COCONUT CREEK

REV	DATE	DESCRIPTION

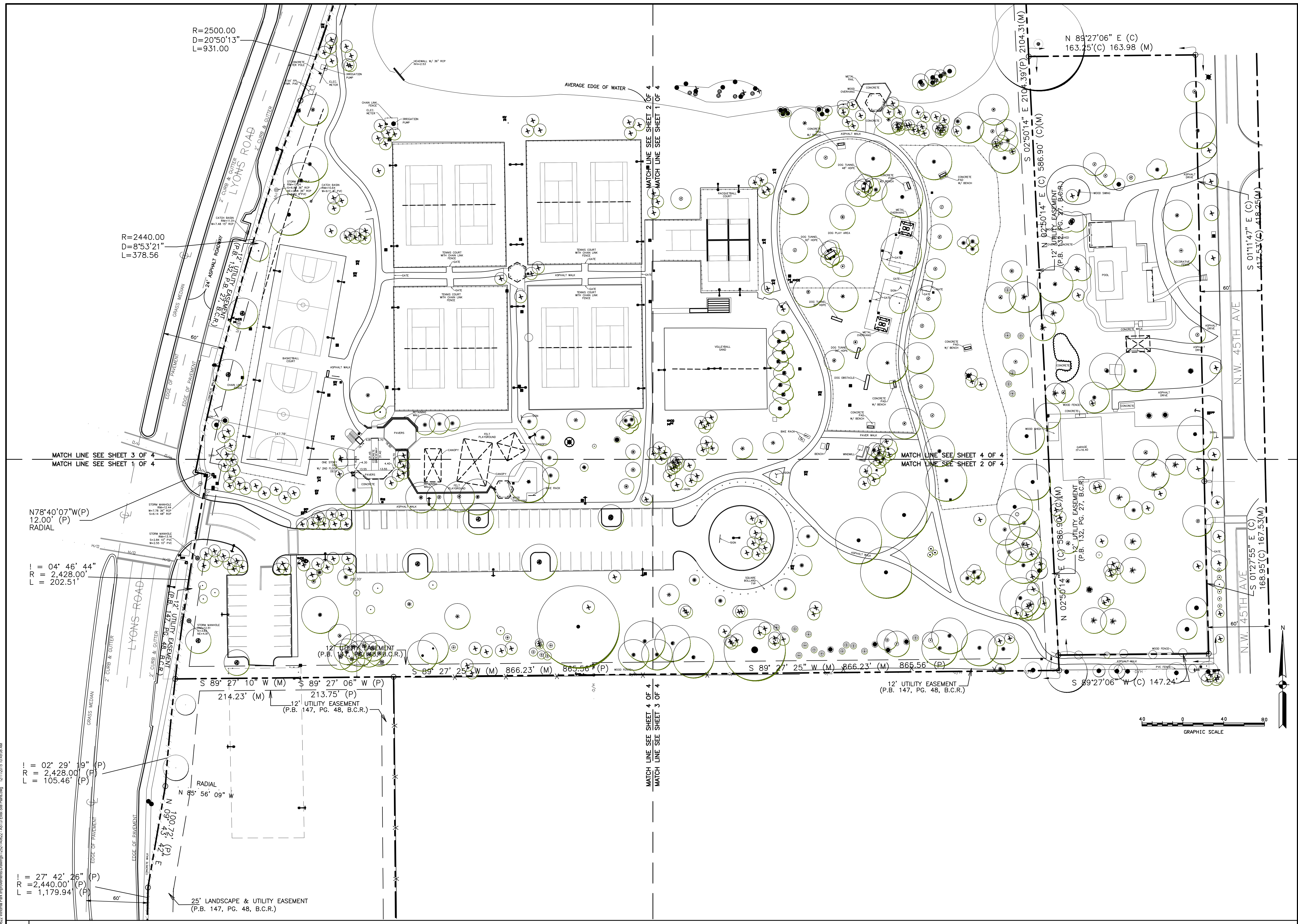
DESIGN DELIVERABLE: DRC REVIEW SET
ISSUE DATE: 12/14/15

PROJECT NUMBER: 1252-140622
DRAWN BY: KW
CHECKED BY: MR

Copyright (c) by SYNALOVSKI ROMANIK SAYE
All Rights Reserved.

SHEET TITLE:
OVERALL EXISTING SITE PLAN

SHEET NUMBER:
AS1.0



R=2500.00
D=20°50'13"
L=931.00

R=2440.00
D=8°53'21"
L=378.56

N 89°27'06" E (C)
163.25'(C) 163.98 (M)

N78°40'07"W(P)
12.00' (P)
RADIAL

R = 04' 46' 44"
L = 2,428.00'
L = 202.51'

R = 02' 29' 19" (P)
R = 2,428.00' (P)
L = 105.46' (P)

R = 27' 42' 26" (P)
R = 2,440.00' (P)
L = 1,179.94' (P)

