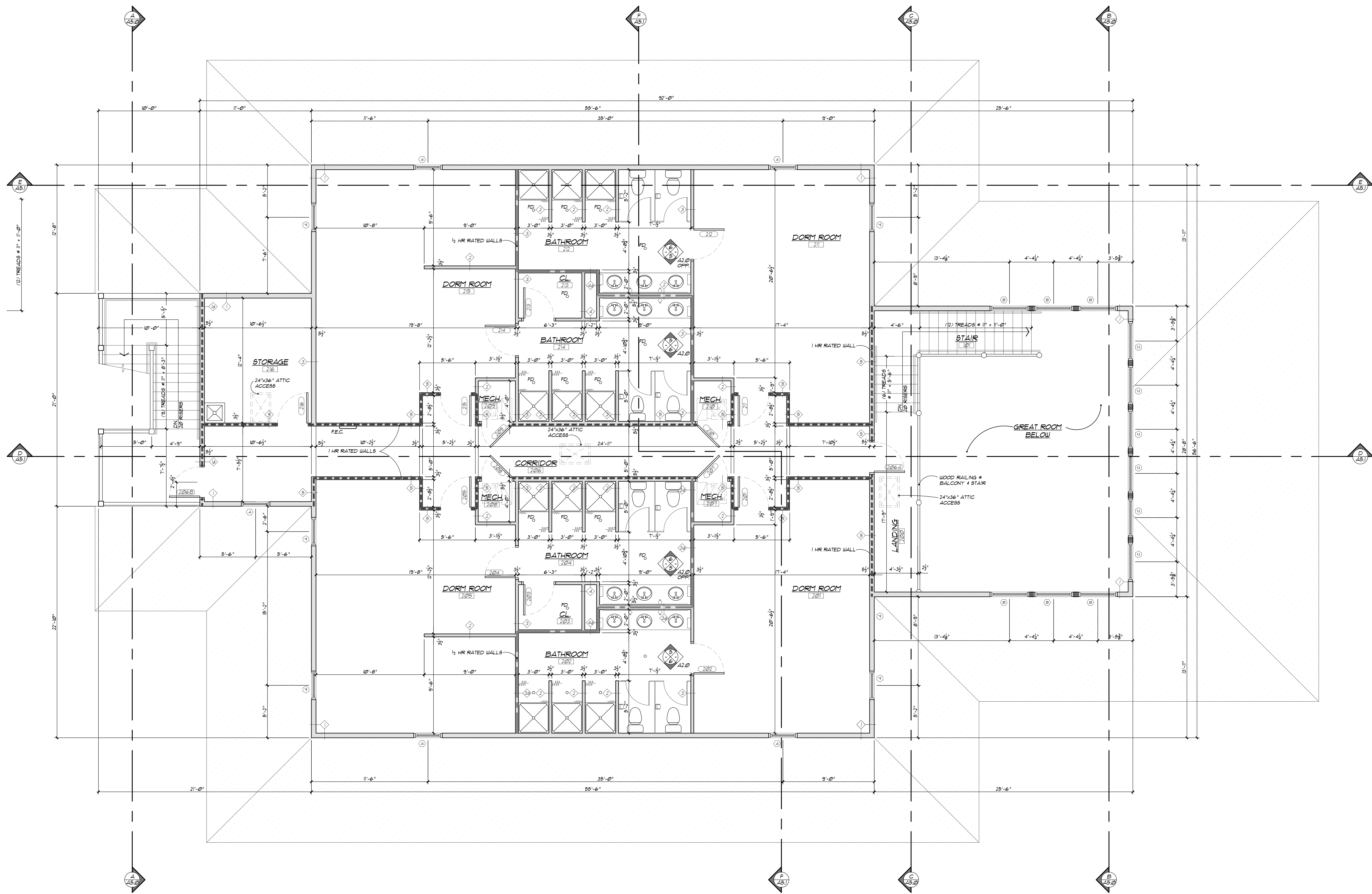


WALL TYPES LEGEND							
<p>◇ TYPICAL EXTERIOR WALL SIDING (TYPE VARIES - REFER TO ELEVATION): AIR INFILTRATION BARRIER 1" EXTERIOR GRADE SHEATHING 2x6 STUDS @ 16" O.C. R-21 INSULATION 1/2" GYPSUM BOARD VAPOR BARRIER PRIMER (2 COATS)</p>		<p>◇ TYPICAL EXTERIOR WALL - U.L. DESIGN 4.0/0.9 (1/2 HR. FIRE RATING): 1/4" THICK FIBER CEMENT SIDING AIR INFILTRATION BARRIER 1" TYPE X EXTERIOR GYPSUM SHEATHING 2x6 STUDS @ 16" O.C. R-21 INSULATION 1/2" GYPSUM BOARD VAPOR BARRIER PRIMER (2 COATS)</p>		<p>◇ TYPICAL SOUND ATTENUATION WALL - U.L. DESIGN 4.0/0.9 (1/2 HR. FIRE RATING): 1/2" GYPSUM BOARD 2x STUDS @ 16" O.C. (SEE PLAN FOR SIZE) 3 1/2" SOUND ATTENUATION BATT (2) LAYERS 1/2" GYPSUM BOARD</p>		<p>◇ TYPICAL SHEET WALL - U.L. DESIGN 5.14 (1/2 HR. FIRE RATING): 1/2" TYPE X GYPSUM BOARD 1/2" GYPSUM BOARD 2x4 STUDS @ 16" O.C. 3 1/2" SOUND ATTENUATION BATT (2) LAYERS 1/2" GYPSUM BOARD</p>	
<p>◇ TYPICAL INTERIOR WALL (1 HOUR FIRE RATED): 1/2" THICK FIBER CEMENT SIDING AIR INFILTRATION BARRIER 1" TYPE X EXTERIOR GYPSUM SHEATHING 2x6 STUDS @ 16" O.C. R-21 INSULATION 1/2" GYPSUM BOARD VAPOR BARRIER PRIMER (2 COATS)</p>		<p>◇ TYPICAL SOUND ATTENUATION WALL - U.L. DESIGN 4.0/0.9 (1/2 HR. FIRE RATING): 1/2" GYPSUM BOARD 2x STUDS @ 16" O.C. (SEE PLAN FOR SIZE) 3 1/2" SOUND ATTENUATION BATT (2) LAYERS 1/2" GYPSUM BOARD</p>		<p>◇ FIRE SEPARATION BARRIER - 1 HOUR RATING - U302: 1/2" TYPE X GYPSUM BOARD 1/2" EXTERIOR GRADE SHEATHING 2x STUDS @ 16" O.C. (SEE PLAN FOR SIZE) 3 1/2" SOUND ATTENUATION BATT (2) LAYERS TYPE X 1/2" GYPSUM BOARD</p>		<p>◇ TYPICAL SHEET WALL 1/2" GYPSUM BOARD 2x4 STUDS @ 16" O.C. 1/2" GYPSUM BOARD 2x4 STUDS @ 16" O.C.</p>	

NOTES:
1. USE MOISTURE RESISTANT GYPSUM BOARD IN ALL BATHROOMS
2. SEE ROOM FINISH SCHEDULE FOR WALL FINISHES



UPPER LEVEL FLOOR PLAN
1/4" = 1'-0" NORTH

ARCHITECT OF RECORD: Dean DeKryger - License # AR97456
DRAWN BY: K. Taylor, B. King
DATE ISSUED: November 17, 2015 Permits and Construction
SHEET NUMBER: A1.1
PROJECT NUMBER: 15101