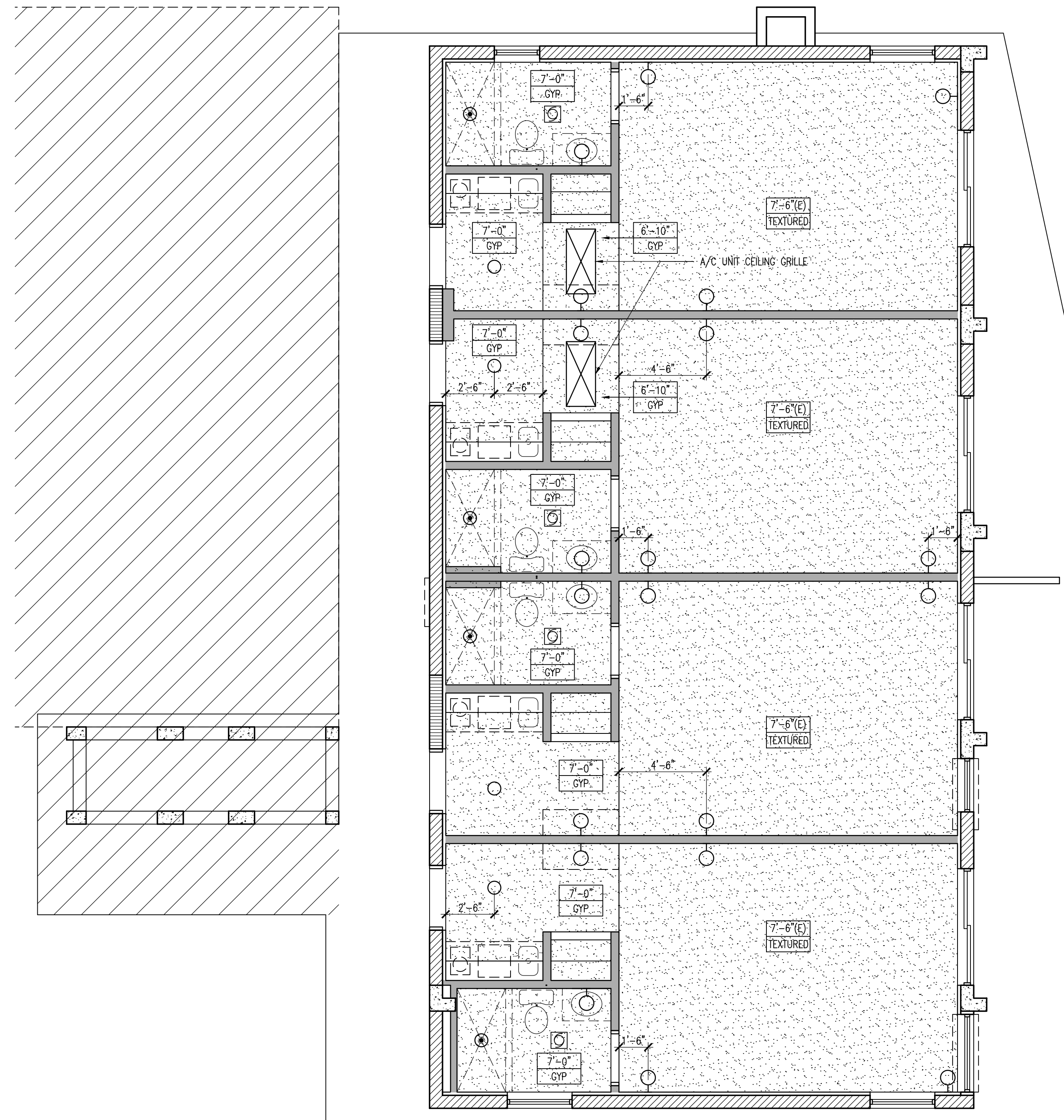


CEILING MATERIAL KEY

- X'-X"
XXXX FINISH CEILING HEIGHT ABOVE
FINISH FLOOR
(E) EXISTING TO REMAIN
- CEILING MATERIAL
NUMBER DESIGNATES TYPE AND/OR FINISH
- (E) EXISTING TO REMAIN
- ACP-1 ACOUSTICAL CEILING PANEL
- GYP GYPSUM BOARD CEILING
- STU CEMENT PLASTER (INTERIOR)/
STUCCO (EXTERIOR) CEILING
- TEXTURED TEXTURED "POPCORN" CEILING
- EXPOSED EXPOSED UNDERSIDE OF
FLOOR OR ROOF STRUCTURE

CEILING LEGEND

- ROOF OR CEILING ACCESS PANEL
- SUPPLY CEILING DIFFUSER,
SEE MECHANICAL DRAWINGS FOR DUCTING
- RETURN OR EXHAUST GRILLE,
SEE MECHANICAL DRAWINGS FOR DUCTING
- RECESSED MOUNTED FLUORESCENT
LIGHT FIXTURE, SEE ELECTRICAL
DRAWINGS FOR TYPE
- 1'x4' SUSPENDED LIGHT FIXTURE
SEE ELECTRICAL DRAWINGS FOR TYPE
- SURFACE MOUNTED FLUORESCENT
LIGHT FIXTURE, SEE ELECTRICAL
DRAWINGS FOR TYPE
- RECESSED OR SURFACE MOUNTED
DOWN LIGHT, SEE ELECTRICAL
DRAWINGS FOR TYPE
- RECESSED OR SURFACE MOUNTED
DOWN LIGHT, WET RATED
SEE. ELECT. DRAWINGS FOR TYPE
- WALL MOUNTED LIGHT FIXTURE,
SEE ELECTRICAL DRAWINGS FOR TYPE
- CEILING MOUNTED J-BOX
- EXHAUST FAN WITH LIGHT
- WALL MOUNTED EMERGENCY EXIT SIGN
- CEILING MOUNTED EMERGENCY EXIT SIGN
- CEILING MOUNTED EMERGENCY EXIT SIGN
WITH DIRECTION OF TRAVEL
- GYPSUM BOARD CEILING



1 THIRD FLOOR
REFLECTED CEILING PLAN
SCALE: 1/4" = 1'-0" 1



ARCHITECT
Jorge I. Perez, AIA
 AR 95576
Perez & Partners, Inc.
 AA 26002942
 7720 SW 89 Ct
 Miami, FL 33173
 786.543.9093
 jorge@perezandpartners.com

CLIENT/PROJECT NAME
**INTERIOR RENOVATIONS TO
 THE PRESTIGE HOTEL
 (East Building)**
 1526 OCEAN DRIVE
 VERO BEACH, FLORIDA 32963

CONSULTANTS
 STRUCTURAL ENGINEER:
Adolfo J. Gonzalez, PE
 2050 Coral Way #502
 Miami, FL 33145
 305.415.8782
 adolfogonzalezpe@gmail.com

MEP ENGINEER:
**Treasure Coast
 Engineering, Inc.**
 4925 13th Lane
 Vero Beach, FL 32966
 772.567.1007
 www.tce.eng.pro

ISSUE/REVISIONS

No.	DATE	DESCRIPTION
-	9-14-15	PERMIT SUBMITTAL

PROJECT No. 15-03
 DRAWN BY:
 CHECKED BY:

SEAL

SHEET No.
A2.32