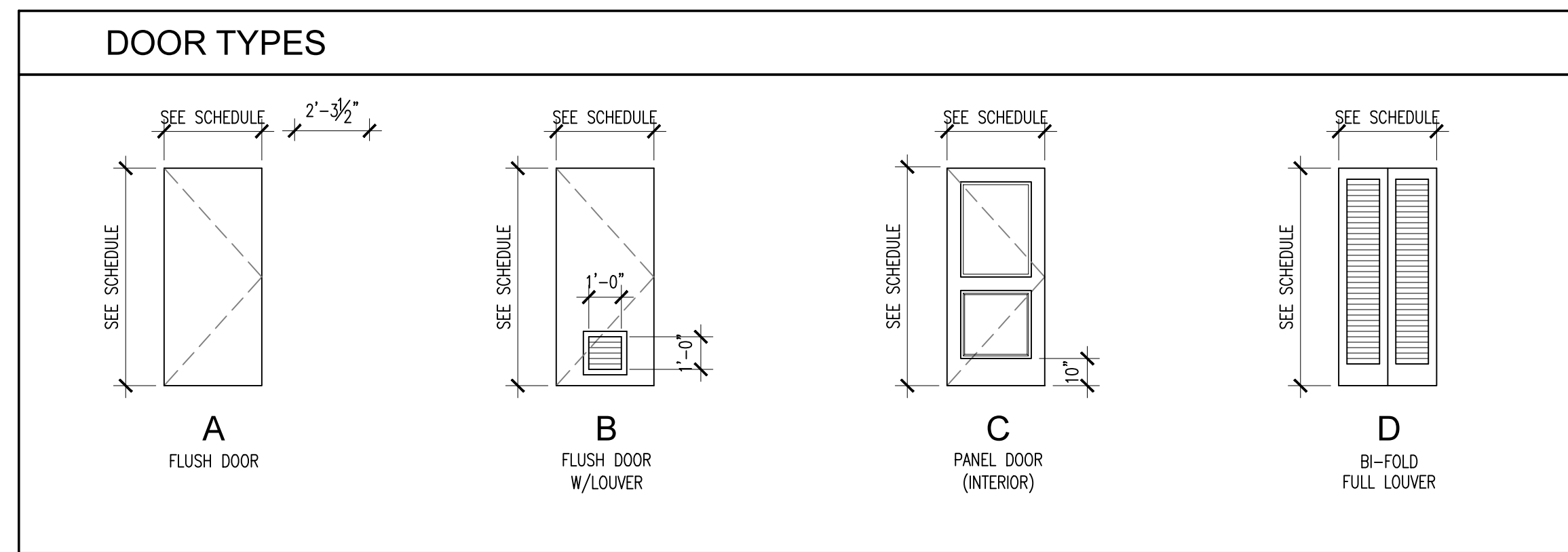


ROOM FINISH SCHEDULE					
ROOM No.	FLOOR	BASE	WALLS	CEILING	REMARKS
M111A	TL-1	WD-1	PT-1	CLG-1	
M111B	TL-2	TL-2	TL-2	PT-2	SEE FINISH NOTE-4
M211	TL-1	WD-1	PT-1	CLG-1	
E201, E202, E203, E204	TL-1	WD-1	PT-1	CLG-1	
E201A, E202A, E203A, E204A	TL-1	WD-1	PT-1	PT-2	
E201B, E202B, E203B, E204B	TL-2	TL-2	TL-2/PT-1	PT-2	SEE FINISH NOTE-4
E301, E302, E303, E304	TL-1	WD-1	PT-1	CLG-1	
E301A, E302A, E303A, E304A	TL-1	WD-1	PT-1	PT-2	
E301B, E302B, E303B, E304B	TL-2	TL-2	TL-2/PT-1	PT-2	SEE FINISH NOTE-4

FINISH LEGEND:		FINISH NOTES:	
TL-1: PORCELAIN TILE	TL-2: PORCELAIN TILE	1- ALL GYPSUM BOARD SURFACES SCHEDULED TO RECEIVED PAINT FINISH TO HAVE GYPSUM BOARD FINISH LEVEL-4	
WD-1: 4" HIGH WOOD BASE WITH PAINT FINISH	PT-1: PAINT	2- PORCELAIN TILE TO MEET FBC SLIP RESISTANT COEFFICIENT	
PT-2: PAINT, CEILING WHITE	CLG-1: TEXTURED 'POPCORN' CEILING PAINT	3- ALL FINISHES MATERIALS TO BE SELECTED BY OWNER	
		4- REFER TO BATHROOMS INTERIOR ELEVATIONS	

3 ROOM FINISH SCHEDULE

SCALE: N.T.S.



DOOR SCHEDULE													
DOOR NO.	TYPE	DOOR SIZE			DOOR MATERIAL		RATING	FRAME MATERIAL		DETAILS			REMARKS
		WIDTH	HEIGHT	THICKNESS	MATERIAL	FINISH		MATERIAL	FINISH	JAMB	HEAD	SILL	
M111A	C	3'-0"	6'-8"	1-3/8"	WD	PAINT	-	WD	PAINT	1/A501	1/A501	-	-
M111B	B	3'-0"	6'-8"	1-3/4"	FGL	PAINT	-	WD	PAINT	-	-	-	NOTE-E
M211	A	3'-0"	6'-8"	1-3/4"	FGL	PAINT	-	WD	PAINT	2/A501	2/A501	3/A501	NOTE-D
E203	A	3'-0"	6'-8"	1-3/4"	FGL	PAINT	-	WD	PAINT	2/A501	2/A501	3/A501	NOTE-D
E203A	D	3'-0"	6'-8"	1-3/8"	WD	PAINT	-	PAINT	1/A501	1/A501	-	-	
E203B	C	2'-10"	6'-8"	1-3/8"	WD	PAINT	-	WD	PAINT	1/A501	1/A501	-	-
E204	A	3'-0"	6'-8"	1-3/4"	FGL	PAINT	-	WD	PAINT	2/A501	2/A501	3/A501	NOTE-D
E204A	D	3'-0"	6'-8"	1-3/8"	WD	PAINT	-	PAINT	1/A501	1/A501	-	-	
E204B	C	2'-10"	6'-8"	1-3/8"	WD	PAINT	-	WD	PAINT	1/A501	1/A501	-	-
E301	A	3'-0"	6'-8"	1-3/4"	FGL	PAINT	-	WD	PAINT	2/A501	2/A501	3/A501	NOTE-D
E301A	D	3'-0"	6'-8"	1-3/8"	WD	PAINT	-	PAINT	1/A501	1/A501	-	-	
E301B	C	2'-10"	6'-8"	1-3/8"	WD	PAINT	-	WD	PAINT	1/A501	1/A501	-	-
E302	A	3'-0"	6'-8"	1-3/4"	FGL	PAINT	-	WD	PAINT	2/A501	2/A501	3/A501	NOTE-D
E302A	D	3'-0"	6'-8"	1-3/8"	WD	PAINT	-	PAINT	1/A501	1/A501	-	-	
E302B	C	2'-10"	6'-8"	1-3/8"	WD	PAINT	-	WD	PAINT	1/A501	1/A501	-	-
E303	A	3'-0"	6'-8"	1-3/4"	FGL	PAINT	-	WD	PAINT	2/A501	2/A501	3/A501	NOTE-D
E303A	D	3'-0"	6'-8"	1-3/8"	WD	PAINT	-	PAINT	1/A501	1/A501	-	-	
E303B	C	2'-10"	6'-8"	1-3/8"	WD	PAINT	-	WD	PAINT	1/A501	1/A501	-	-
E304	A	3'-0"	6'-8"	1-3/4"	FGL	PAINT	-	WD	PAINT	2/A501	2/A501	3/A501	NOTE-D
E304A	D	3'-0"	6'-8"	1-3/8"	WD	PAINT	-	PAINT	1/A501	1/A501	-	-	
E304B	C	2'-10"	6'-8"	1-3/8"	WD	PAINT	-	WD	PAINT	1/A501	1/A501	-	-

DOOR NOTES

- A- ALL DOOR HARDWARE SHALL BE LEVER-OPERATED TYPE
- B- VERIFY IN FIELD ROUGH OPENING DIMENSIONS (WIDTH & HEIGHT) BEFORE INSTALLATION.
- C- ALL WOOD DOORS TO BE SOLID CORE
- D- ARCHITECTURAL FIBERGLASS OPAQUE DOOR BY JELD-WEN, INC. FLORIDA PRODUCT APPROVAL FL16902-R3 DESIGN PRESSURES: PRODUCT DESIGN PRESSURES: ZONE-4 / +41.39 PSF, -45.01 PSF PRODUCT DESIGN PRESSURES: +60 PSF, -60 PSF
- E- NEW SOLID DOOR TO MATCH EXISTING HOTEL ROOMS. CONTRACTOR TO PROVIDE SHOP DRAWINGS FOR APPROVAL

2 DOOR SCHEDULE

SCALE: N.T.S.

FLOOR PLAN KEY NOTES

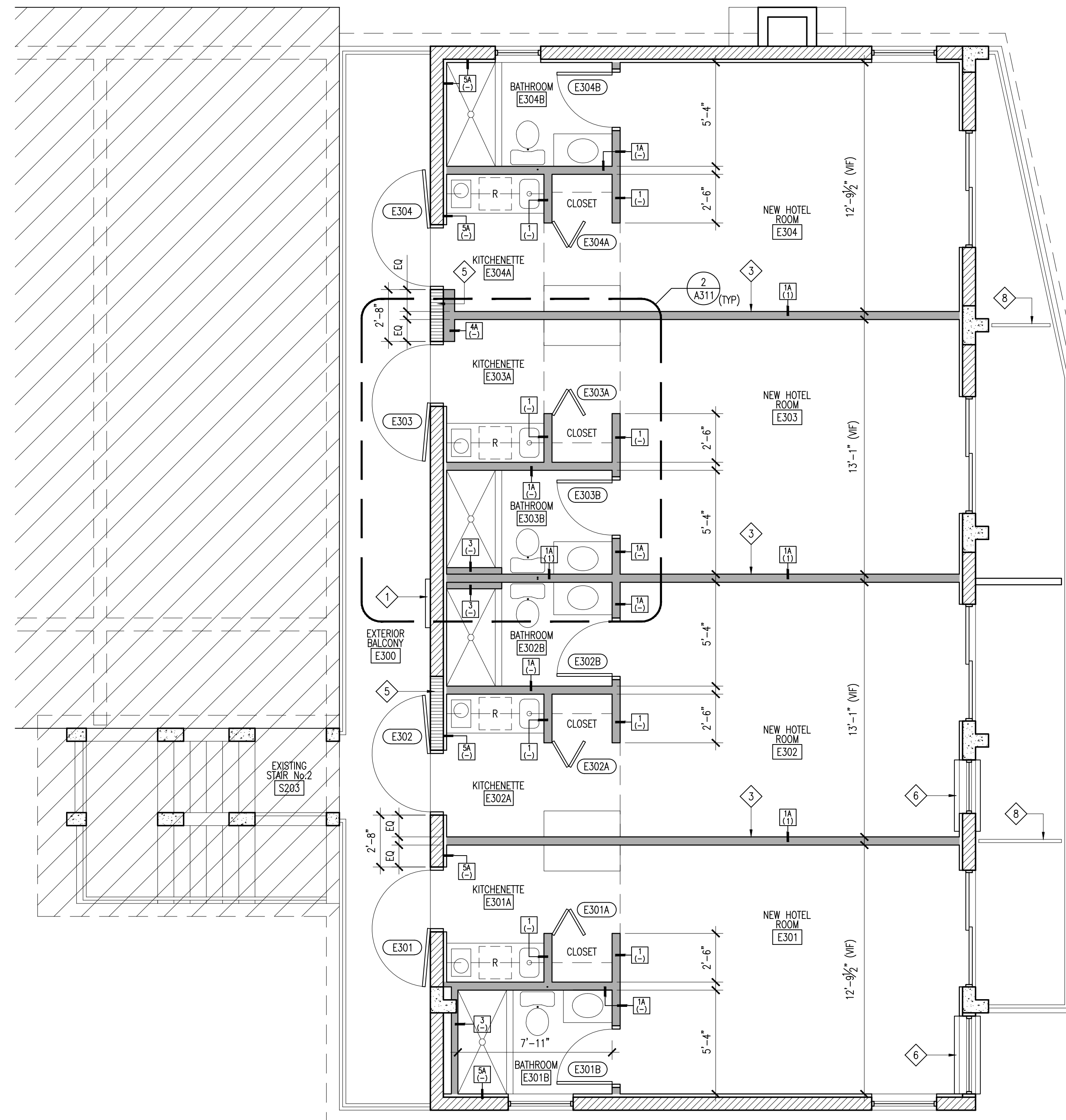
- 1 EXISTING FIRE DEPARTMENT CONNECTION TO REMAIN
- 2 EXISTING WALL TO REMAIN. PATCH AND REPAIR AS NECESSARY TO MATCH NEW FINISHES
- 3 HOTEL UNITS SEPARATING WALLS ON SECOND AND THIRD FLOORS TO BE ALIGNED
- 4 EXISTING A/C WALL UNIT TO REMAIN
- 5 NEW CMU WALL WITH SMOOTH STUCCO FINISH TO MATCH EXISTING. REFER TO SHEET S-1 AND S-2 FOR STRUCTURAL DETAILS
- 6 NEW AIR CONDITIONING UNIT. REFER TO MECHANICAL DRAWINGS FOR DETAILS
- 7 EXISTING AIR CONDITIONING UNIT
- 8 NEW METAL RAILING BALCONY DIVIDER TO MATCH EXISTING RAILING
- 9 PROVIDE SELF LEVELING CONCRETE MIX AS REQUIRED BEFORE TILE INSTALLATION TO ACHIEVE 1/2" MAX. LEVEL CHANGE AT DOOR THRESHOLD

FLOOR PLAN LEGEND

- DENOTES EXISTING BUILDING TO REMAIN
- DENOTES NEW INTERIOR PARTITION. REFER TO PARTITION TYPES
- EXISTING CMU WALL
- NEW CMU WALL

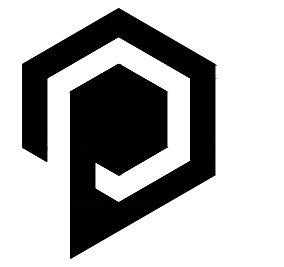
GENERAL NOTES

1. CONTRACTOR SHALL EXERCISE EXTREME CARE WHEN PENETRATING EXISTING WALLS AND SLABS SO STRUCTURAL INTEGRITY OF SUCH ELEMENTS IS NOT DEGRADED.
2. ACCESSIBLE HOTEL ROOMS ARE PROVIDED ON THE GROUND FLOOR (EXISTING CONDITIONS)
3. FOR PARTITIONS TYPES, REFER TO SHEET A4.01
4. FOR DOOR SCHEDULE AND FINISH SCHEDULE, REFER TO SHEET A2.22



1 NEW THIRD FLOOR PLAN

SCALE: 1/4" = 1'-0"



Perez & Partners, Inc.
architecture

ARCHITECT
Jorge I. Perez, AIA
AR 95576
Perez & Partners, Inc.
AA 26002942
7720 SW 89 Ct
Miami, FL 33173
786.543.9093
jorge@perezandpartners.com

CLIENT/PROJECT NAME

INTERIOR RENOVATIONS TO
THE PRESTIGE HOTEL
(East Building)
1526 OCEAN DRIVE
VERO BEACH, FLORIDA 32963

CONSULTANTS

STRUCTURAL ENGINEER:
Adolfo J. Gonzalez, PE
2050 Coral Way #502
Miami, FL 33145
305.415.8782
adolfojgonzalezpe@gmail.com

MEP ENGINEER:
Treasure Coast
Engineering, Inc.
4925 13th Lane
Vero Beach, FL 32966
772.567.1007
www.tce.eng.pro

ISSUE/REVISIONS

No.	DATE	DESCRIPTION
-	9-14-15	PERMIT SUBMITTAL
Δ	10/13/15	PERMIT COMMENTS

PROJECT No. 15-03

DRAWN BY:

CHECKED BY:

SEAL

SHEET No.

A2.22