

HEERY

4700 Millenia Boulevard
 Suite 550
 Orlando, FL 32839
 407-992-6300

Shop Drawing Transmittal

To: Charles Perry Partners, Inc.
 8200 NW 15th Place
 Gainesville, FL 32606
 Attn: Jake Plein
 Phone: 352-333-9292

Received Date: 3/20/14
Review Date: 3/24/14
Return Date: 3/24/14
Project No: 1218800
Spec. Section: 22 42 23
Number: 001-01

Re: UF Harrell Medical Education Building

This letter transmits the Shop Drawings identified below. If the transmitted documents are not as noted below, please advise this office at once.

Samples	Quantity		Date Submitted	NO EXCEPTIONS TAKEN	MAKE CORRECTIONS NOTED	MAKE CORRECTIONS NOTED & RESUBMIT	REJECTED	NOT REQUIRED FOR REVIEW	DESCRIPTION
	1		3/20/14	X					Revised Commercial Showers Product Data

Comments:



Architect's / Engineer's Signature
David H. Anelli CGT

We offer the following comments:

1. Reviewing is only for conformance with the design concept of the Project and compliance with the information given in the Contract Documents. The Contractor is responsible for dimensions to be confirmed and correlated at the site; for information that pertains solely to the fabricator process or to the means, methods, techniques, sequences and procedures of construction; and for the coordination of the work of all trades.
2. Maintain one set of shop drawings bearing the Architect's approval stamp and the General Contractor's approval stamp at the job site. All shop drawings used for construction at the site must bear the Architect's approval stamp and must be accessible to the Architect's representative during visits to the site.



SUBMITTAL COVER

RECEIVED
HEERY

03/20/2014

<p>Project: UF Harrell Medical Education Building Owner Project #: UF-286 CPPI Project #: 01-01-12141</p> <p>Charles Perry Partners, Inc. 8200 NW 15th Place Gainesville, FL. 32606 P: (352) 333-9292 F: (352) 333-9293</p>	<p>This submittal has been reviewed by Charles Perry Partners, Inc. for general conformity to the Contract Documents. SUBCONTRACTOR / SUPPLIER shall verify all dimensions, quantities and capacities. Approval does not relieve the SUBCONTRACTOR / SUPPLIER of responsibility for compliance with the Contract Documents.</p>
--	---

Submittal #: 22 42 23-001-01 Commercial Showers - PD
From: Charles Perry Partners, Inc.
Reviewed by: Austin Weingart
Review Date: 03/20/14

- REVIEWED
- REVIEWED AS NOTED
- REJECTED - RESUBMIT

Submittal Review Stamp

Review Comments:

Project # 1218800
Submittal# 22 42 23-001-01

- NO EXCEPTION TAKEN
- MAKE CORRECTIONS NOTED
- MAKE CORRECTIONS AS NOTED & RESUBMIT
- REJECTED
- NOT REQUIRED FOR REVIEW

Approval does not authorize changes to the Contract Sum unless stated in a separate letter or Change Order. The Contractor is not relieved of responsibility for compliance with requirements of the Contract Documents by this review, which is only for conformance with the design concept and general agreement with information given in the Contract Documents. The Contractor is responsible for confirming and correlating all dimensions at the site; for confirming information pertaining solely to the fabrication processes or to means, methods, techniques, sequences and procedures of construction; and for coordinating the Work with Work of all other trades



Date 3/24/14 By: D. H. Anelli

SUBMITTAL DATA

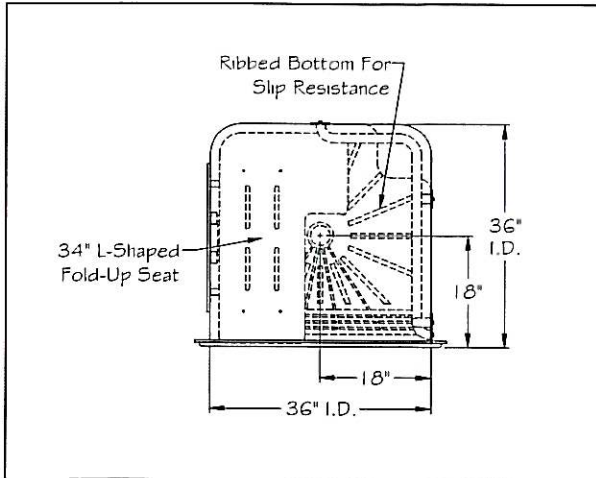
W.W. GAY MECHANICAL CONTRACTOR, INC.

JOB NAME:	HARRELL MEDICAL EDUCATION BUILDING UF-286
ARCHITECT:	HEERY DESIGN
ENGINEER:	BALLINGER
GENERAL CONTRACTOR:	CPPI CONSTRUCTION
MECHANICAL CONTRACTOR:	W. W. GAY MECHANICAL
VENDOR / SUBCONTRACTOR:	FERGUSON
DESCRIPTION OF ITEM:	COMMERCIAL SHOWERS
SPEC. SECTION:	224223
WWGMC JOB NO:	316147

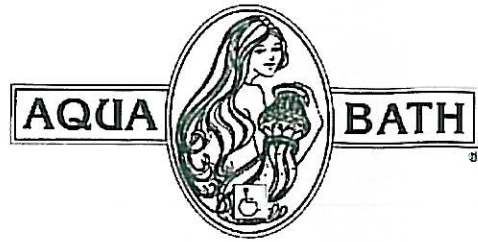
NOTES: **PARTIAL RESUBMITTAL**



C4136BF-FUS 3/4" (Right Hand Unit Shown)

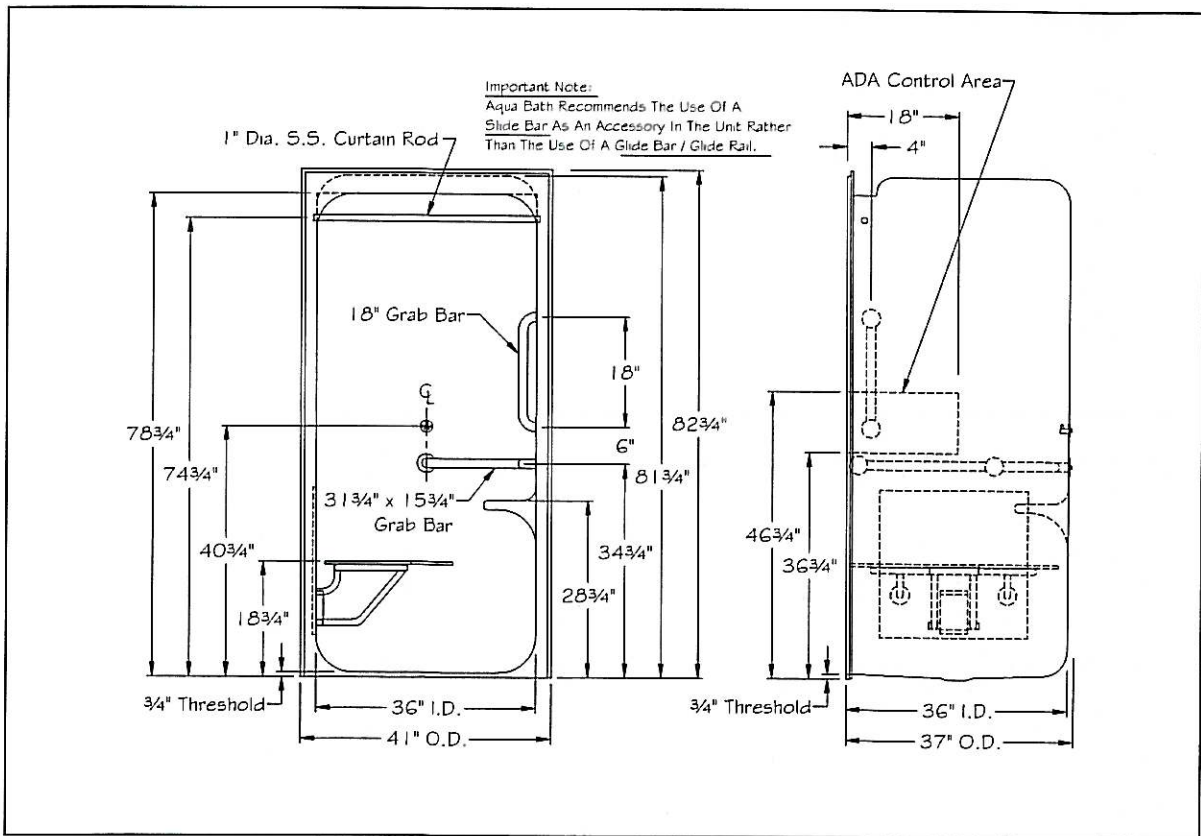


Top View - Right Hand Shown



For additional information, call the
Aqua Bath Customer Service
Department At 1-800-232-2284

Care Series
ADA Compliant
Submittal Data
C4136BF-FUS 3/4"



Front View and Right Side View

Note: Manufacturing Tolerance Of ($\pm 1/4$ ") Due To The Nature Of The Materials Used

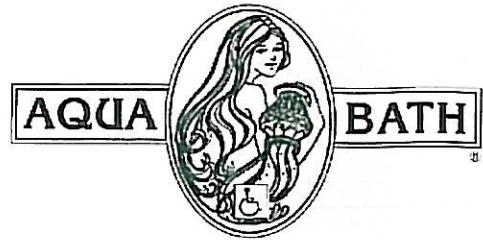
Installation: Detailed installation instructions are contained in this catalog, and provided with each unit shipped. The field installation instructions must be followed as directed or may void manufacturers warranty.

Reference installation instructions for C4136BF-FUS 3/4".

To be ADA compliant, top of threshold can not exceed 1/2" above the finished floor material.

CARE SERIES

- **Model C4136BF-FUS 3/4"-L** valve on left.
- **Model C4136BF-FUS 3/4"-R** valve on right.
- Bath units designed for hospitals, nursing homes, rehabilitation centers, hotels, motels and residential applications.
- Meets ANSI A117.1, ADA Guidelines and other standards for accessibility
- Acrylic one-piece molded construction simplifies installation.
- Inside dimensions: 36" W x 36" D x 78" H.
- Can be furnished complete with valve, hand held shower set, curtain and hooks.
- Barrier-Free Shower System, U.S. Patent No.6,178,571 B1.
- 2" threshold for pit detail installation.
- 3/4" threshold for top of slab installation.
- Factory installed fold-up seat full depth of stall.
- 18" vertical grab bar and 31 3/4" x 15 3/4" x 1 1/2" wrap grab bar.
- **Vacuum-formed from .1875" one-piece sanitary grade acrylic.**
- *Manufacturing Tolerance Of (±1/4") Due To The Nature Of The Materials Used.*



**For additional information, call the
Aqua Bath Customer Service
Department At 1-800-232-2284**

Please check with your local city and state for code compliancy. Aqua Bath's advertised ADA compliant units are based on our interpretation of the Americans with Disabilities Act 1991 Guidelines. Field alterations or improper installation could take the units out of compliance. Aqua Bath accepts no responsibility for final code compliance.

Transfer Shower Stall

The shower enclosure shall be Aqua Bath model **C4136BF-FUS 3/4"** acrylic and be molded from a single sheet so as not to have any joints or seams, shall meet ANSI Z124.2. Shall meet ADA guidelines and other standards for accessibility. Unit shall have a backside flame spread of less than 30 (Class B). Shall be designed to be **ADA COMPLIANT** and **NAHB LISTED**. The enclosure shall have inside dimensions of 36" W x 36" D x 78" H and outside dimensions of 41" W x 37" D x 82 3/4" H. The approximate weight of the unit shall be 230lbs. The unit shall be formed with a patented recessed trench system so as to direct water to the center drain. **To be ADA compliant, top of threshold cannot exceed 1/2" above finished floor material.**

Standard Accessories:

- 1) One 31 3/4" x 15 3/4" x 1 1/2" diameter two wall horizontal wrap grab bar and one 18" vertical grab bar, fabricated from 18 gauge stainless steel with 1 1/2" safety statute clearance, mounted with stainless steel bolts and secured from the rear with 3" x 3" x 11 gauge metal mounting plates.
 - 2) 34" "L" shaped phenolic fold-up seat.
 - 3) 1" diameter, 18 gauge stainless steel curtain rod.
 - 4) One wall bracket installed at 40" above floor in the center of back wall for hand held shower set.
- After grab bars, fold-up seat, curtain rod and wall bracket have been factory installed, they will be sealed from the backside making the unit completely waterproof.
- 5) Ribbed bottom for slip resistance (standard).

Available Accessories:

- 1) Hand held shower set (includes 60" flex hose, swivel connector, brass nipple, lock nut, wall outlet and vacuum breaker).
 - 2) 24" slide bar, 30" slide bar or two (2) wall brackets installed on valve wall for use with hand held shower set.
- Note: The determination of the use of slide bar or wall brackets to be installed in the unit is based upon the valve package chosen by the specifier for use in the unit. Aqua Bath recommends the use of a slide bar as an accessory in the unit rather than the use of a glide bar / glide rail.**
- 3) Pressure balance or thermostatic control valve.
 - 4) Shower curtain - antibacterial, with hooks.
 - 5) Weighted shower curtain (patented), antibacterial, with hooks.
 - 6) Seat belt.
 - 7) Dome light (factory drilled only, must be field installed and light shipped separately from unit).
 - 8) ASTM F462 non-slip bottom. (* When the ASTM F462 bottom is specified with the center drain location, it will re-configure the trench drain system. A signed off approval is required for the bottom re-configuration.

Modifications:

Received and / or approved by:

Name: _____

Company: _____

Title: _____

Phone: _____

Date: _____