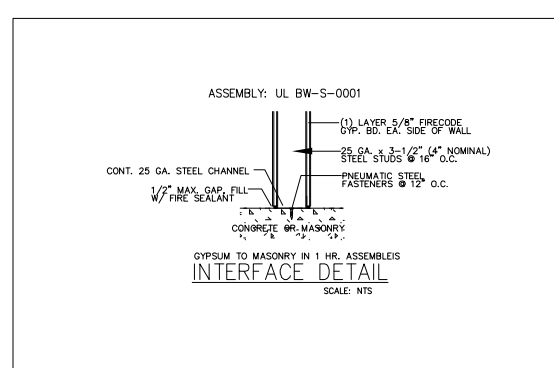
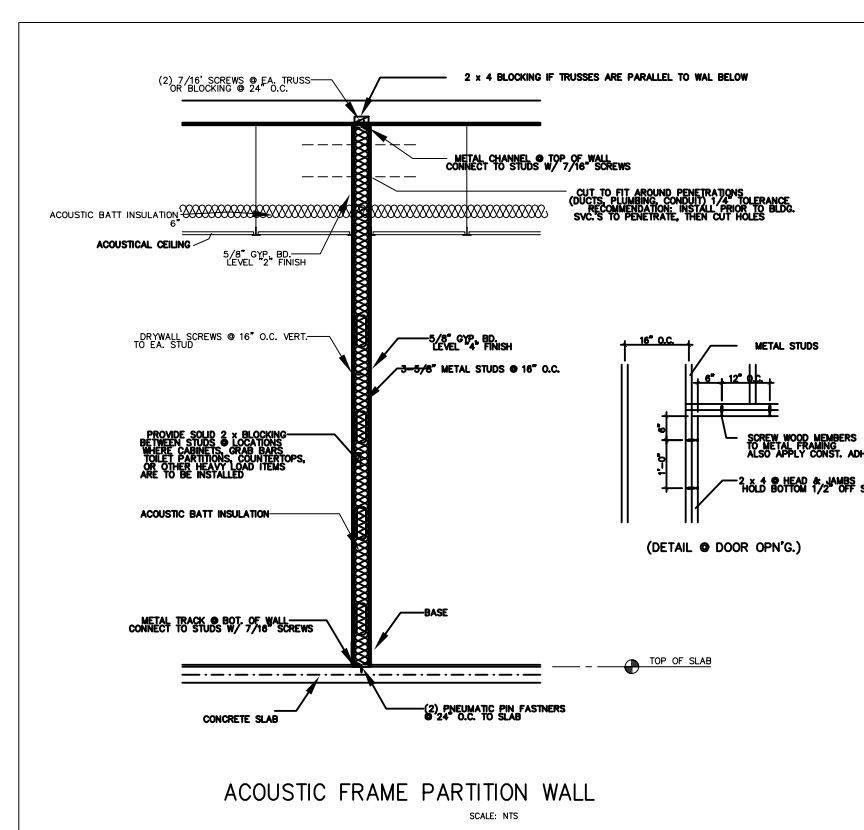
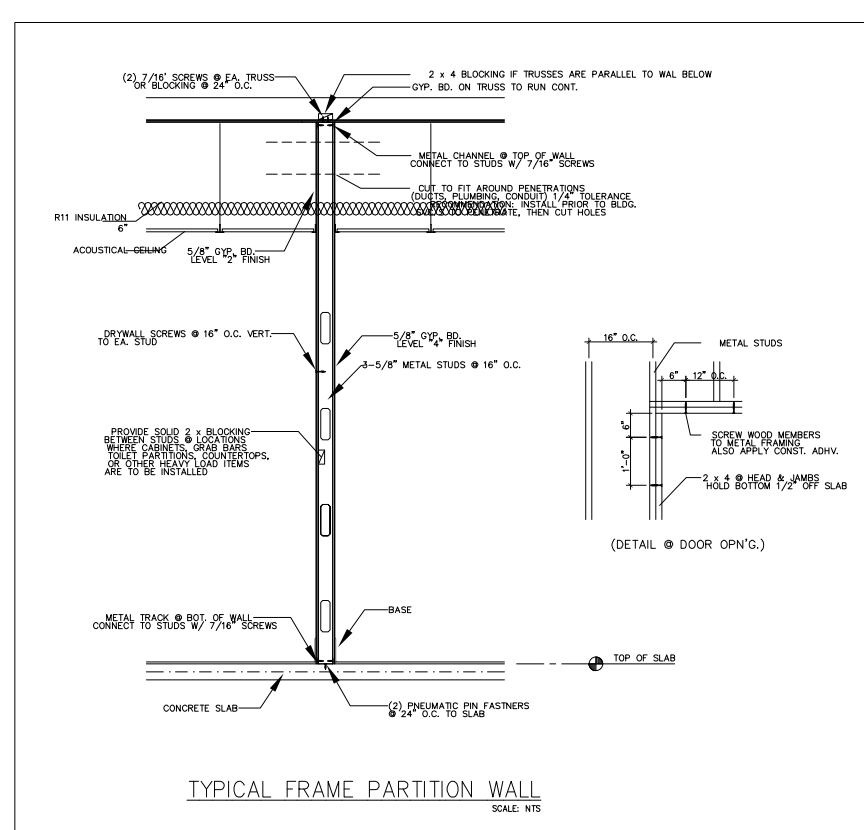


# SECOND FLOOR PLAN

SCALE: 1/4" = 1'-0"

606.2.3 Alternate Roll-In Type Shower Compartments. Alternate roll-in type shower compartments shall be 36 inches (915 mm) wide and 60 inches (1525 mm) deep minimum clear inside dimensions measured at center points of opposing sides. A 36 inch (915 mm) wide minimum entry shall be provided at one end of the long side of the compartment.

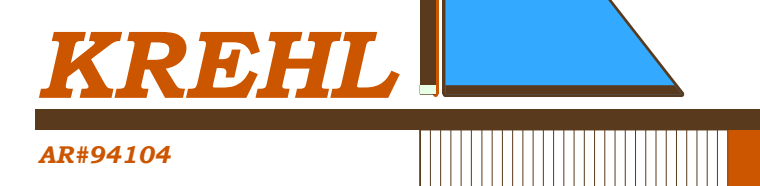


**CODE SEARCH:**  
 Scope of work consists of modifications to 4,173 GSF of the 2nd floor of the existing office building located at 3405 Ocean Drive, for business office use. Work includes architectural (non-load bearing), electrical, plumbing & mechanical modifications. The Building Occupancy Classification is Business Group "B", specifically Professional Services. All improvements to be type "B" classification.

- CODES REFERENCED:**
- 2010 FLORIDA BUILDING CODES:
    - BUILDING
    - EXISTING BUILDING
    - PLUMBING
    - MECHANICAL
  - 2008 NATIONAL ELECTRICAL CODE
  - 2010 NFPA 101 - LIFE SAFETY CODE

- SYNOPSIS OF APPLICABLE CODE CHAPTER/SECTIONS:**
- 2010 FBC: BUILDING
    - Chapter 2 Definitions
    - Chapter 3 Use and Occupancy Classification
      - Section 304 Business Group B
  - 2010 FBC: EXISTING BUILDING
    - Chapter 6 Alterations - Level 1
      - Section 602 Building Elements and Materials
      - Section 603 Fire Protection
      - Section 604 Means of Egress
      - Section 605 Accessibility
      - Section 606 Structural
      - Section 608 Electrical
      - Section 609 Mechanical
      - Section 610 Plumbing

- 2010 NFPA 101 - LIFE SAFETY CODE
  - Chapter 3 Definitions
  - Chapter 6 Classification of Occupancy and Hazard Contents
    - 6.1.11 Business
    - 6.1.11\* Definition - Business Occupancy - A business an occupancy used for the transaction of business other than mercantile
  - Chapter 7 Means of Egress
    - 7.3 Capacity of Means of Egress
    - 7.3.1 Occupant Load
    - 7.3.1.1 Sufficient Capacity
    - 7.3.1.2 Occupant Load Factor
  - Chapter 8 Features of Fire Protection



Marla Companion Interiors  
 3351 Ocean Drive, Suite 9  
 Vero Beach, FL 32963  
 Office: (772) 999-6009  
 Cell: (772) 589-9426  
 FL License ID #2582

Copyright © 2014

Permit Application #  
 2014110255

**QOL MEDICAL, LLC.**  
 3405 Ocean Drive  
 VERO BEACH, FLORIDA

**BROWN DOG Construction**  
 1031 Royal Palm Blvd.  
 VERO BEACH, FL 32960  
 772.633.8190

**DELLA PORTA Construction, INC**  
 1165 22nd Street  
 VERO BEACH, FL 32960  
 772.633.4044

DATE  
 11/25/14

REVISIONS  
 12/08/14  
 12/16/14

PROJECT NO.

101-01

SHEET NO.

1 of 5