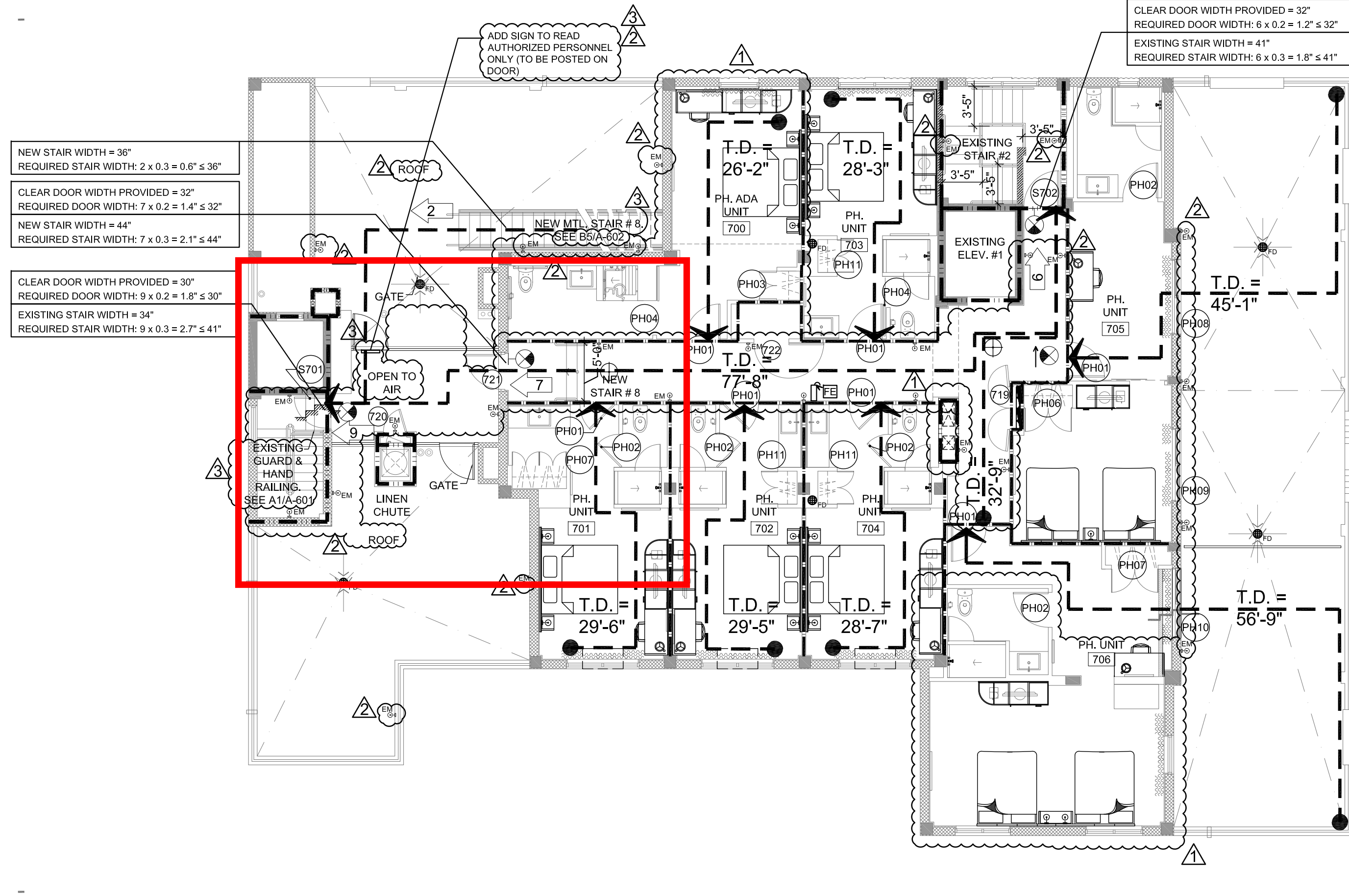


LIFE SAFETY PLAN ROOF LEVEL

SCALE: 1/8" = 1'



LIFE SAFETY PLAN PENTHOUSE (7TH)

SCALE: 1/8" = 1'

OCCUPANT LOAD CALCULATION
NOTE:
BASED ON NFPA 101 2010 F.F.P.C. TBL. 7.3.1.2 AND 2010 F.B.C. TABLE 1004.1.1
HIGHEST OCCUPANCY FACTOR WAS USED TO DETERMINED HIGHEST OCCUPANCY LOAD

LABEL	ROOM NAME	FUNCTION OF SPACE as per table 1004.1.1 F.B.C.	AREA (LENGTH IN BENCHES)	FBC 2010		FFPC NFPA 101			
				FLOOR AREA IN S.F. PER OCCUPANT	# OF OCCUPANTS	FLOOR AREA IN S.F. PER OCCUPANT	# OF OCCUPANTS		
800	ELEV. MCH. RM.	Acary. Storage / mech. eq.	83 SF	300 gross	0.27	1	300 gross	0.27	1
801	STORAGE RM.	Acary. Storage / mech. eq.	229 SF	300 gross	0.76	1	300 gross	0.76	1
TOTAL # OCCUPANTS						2			2

FIRE RATED WALLS NOTES:
1. REFER TO PAGES A-701 & A-702 FOR UL DETAILS FOR RATED WALLS.
2. ALL INTERIOR PARTITIONS AT BASEMENT LEVEL TO BE OF FLOOD-RESISTANT MATERIALS

EXISTING STRUCTURE NOTES:
1. EXISTING BUILDING FLOORS AND ROOF CONSIST OF RIBBED SLAB SYSTEM WITH 4" MIN. THICKNESS.
2. ALL COLUMNS ARE CONCRETE.
3. ALL BEAMS ARE CONCRETE

OCCUPANT LOAD CALCULATION
NOTE:
BASED ON NFPA 101 2010 F.F.P.C. TBL. 7.3.1.2 AND 2010 F.B.C. TABLE 1004.1.1
HIGHEST OCCUPANCY FACTOR WAS USED TO DETERMINED HIGHEST OCCUPANCY LOAD

LABEL	ROOM NAME	FUNCTION OF SPACE as per table 1004.1.1 F.B.C.	AREA (LENGTH IN BENCHES)	FBC 2010		FFPC NFPA 101			
				FLOOR AREA IN S.F. PER OCCUPANT	# OF OCCUPANTS	FLOOR AREA IN S.F. PER OCCUPANT	# OF OCCUPANTS		
700-708	SUITE ROOMS	RESIDENTIAL	2,507 SF	200 gross	12.5	13	200 gross	12.5	13
TOTAL # OCCUPANTS						13			13

SYMBOL LEGEND

- LINE OF EMERGENCY EGRESS
- ONE HR. FIRE RATED WALL
- TWO HR. FIRE RATED WALL
- # OF PEOPLE EXITING
- REQUIRED STAIR & DOOR WIDTH
- EXIST SIGN (WALL OR CEILING MOUNTED)
- FIRE EXTINGUISHER TYPE 2A-10BC. FIRE EXTINGUISHERS TO COMPLY W/ NFPA-1 UNIFORM FIRE CODE, FLORIDA FIRE PREVENTION CODE 2010 EDITION, CHAPTER 13.8, PORTABLE EXTINGUISHERS. FIRE EXTINGUISHER TO BE MOUNTED IN A RECESSED FIRE RATED CABINET. CABINET EQUAL TO LARSEN'S MODEL FS-AL-2409-R3 FULL CLEAR ACRYLIC DOOR)
- WALL MOUNTED FIRE EXTINGUISHER 2.5 GAL. TYPE K LOCATED IN KITCHEN AREA. FIRE EXTINGUISHERS TO COMPLY W/ NFPA-1 UNIFORM FIRE CODE, FLORIDA FIRE PREVENTION CODE 2010 EDITION, CHAPTER 13.6, PORTABLE EXTINGUISHERS

ROYAL POLO HOTEL
2940 COLLINS AVENUE
MIAMI BEACH, FL. 33139

DATE	REVISION
12-17-14	FIRE COMMENTS
12-05-14	FIRE CMNTS
10-07-14	GENERAL REV.

DWG. TITLE
LIFE SAFETY PLAN PENTHOUSE & ROOF PLAN
SCALE
1/8" = 1'
PROJECT NO.
2013-23
DATE
04-09-14
SHEET NUMBER
LS-102

COPYRIGHT 2013. ALL RIGHTS RESERVED. THESE DRAWINGS AND DOCUMENTS ARE INSTRUMENTS OF SERVICE. SHALL REMAIN THE PROPERTY OF BEILINSON GOMEZ ARCHITECTS PA. WHETHER THE PROJECT FOR WHICH THEY WERE PREPARED IS COMPLETED OR NOT. THEY ARE NOT TO BE USED IN ANY MANNER, ON OTHER PROJECTS OR EXTENDED TO THE PROJECT ORIGINALLY INTENDED WITHOUT THE WRITTEN CONSENT OF BEILINSON GOMEZ ARCHITECTS PA. THE WRITTEN CONSENT OF BEILINSON GOMEZ ARCHITECTS PA. IS A NECESSARY CONDITION FOR ANY REUSE OR REPRODUCTION OF THESE DRAWINGS. CONTRACTORS RESPONSIBLE FOR VERIFYING ALL SITE CONDITIONS PRIOR TO PROCEEDING WITH WORK.