

MOWREY

E L E V A T O R

Thursday, October 17, 2019

**RE: 106 S. MONROE
TALLAHASSEE, FL**

To Whom It May Concern:

We are pleased to quote the budget amount of **\$34,000.00** for the installation of **one V-1504 144"**
vertical platform lift by Savaria.

Rated Load	750 lbs.	Maximum lifting height	144"
Cab size	36"x 54"	Landings	1 front/1 rear
Travel	12'-0"	Doors	Automatic swing

Notes: **Power to the unit or any concrete work is by other.**
Please see the attached drawings.
Prevailing wage is not included unless otherwise stated on bid letter.
This quote is good for 60 days.
Bond, if required, add 3.5%.

Payment Terms:
50% Deposit
25% Upon delivery
25% Upon completion

Thank you for your consideration. Please do not hesitate to contact this office if you should have any questions.

Sincerely,

Grace Bush

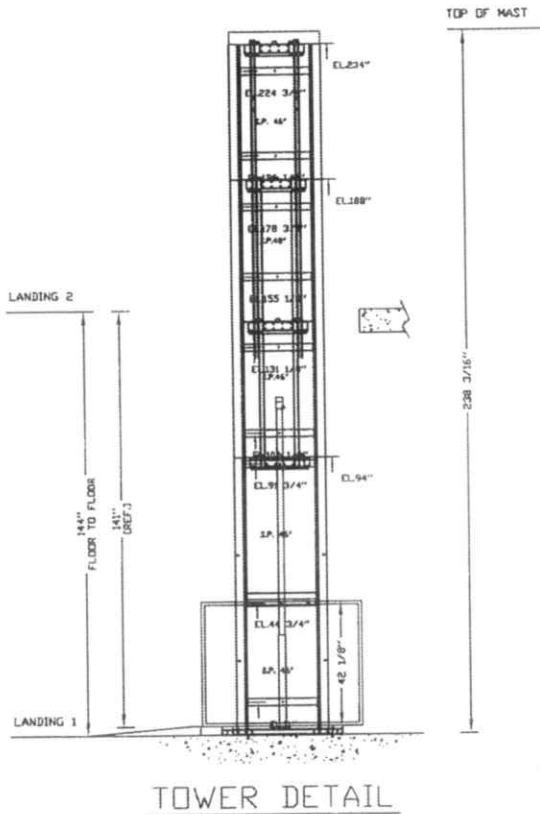
Grace Bush, Construction Sales Manager
Mowrey Elevator Company of Florida, Inc.
800-441-4449, Ext. 136
grace@mowrevelevator.com

WWW.MOWREYELEVATOR.COM

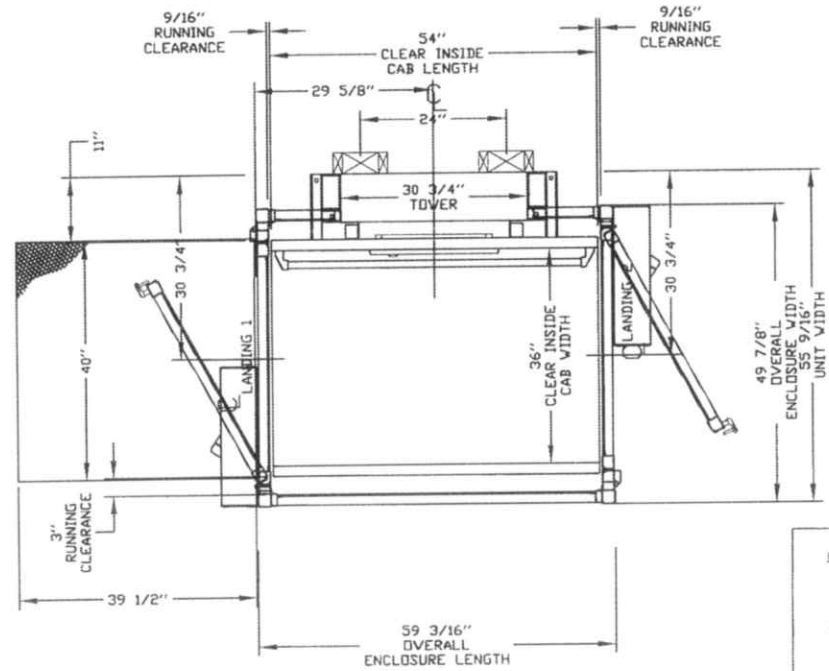


ENCLOSURE DOOR WIDTH DOESN'T ALWAYS MATCH INSIDE PLATFORM DIMENSION.
IF THERE ARE CONCERNS ABOUT THE DOOR SWING CONFLICTING WITH AN
OBSTRUCTION, PLEASE REQUEST FURTHER DETAIL.

TYPICAL PLAN



TOWER DETAIL



PRELIMINARY DRAWING ONLY
DRAWING APPROVAL:

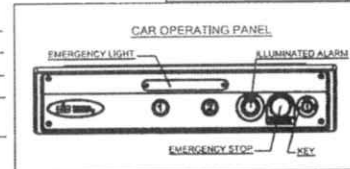
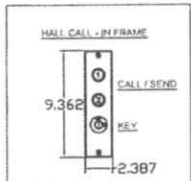
THIS DRAWING REFLECTS OUR INTERPRETATION OF THE INFORMATION PROVIDED BY THE DEALER IN THE ORDER FORM. THIS INFORMATION IS THE DEALER'S RESPONSIBILITY, AND IS THE BASIS FROM WHICH THIS LIFT IS DESIGNED AND MANUFACTURED. PLEASE INDICATE THE REQUESTED ACTION BY CHECKING ONE OF THE FOLLOWING BOXES AND SIGNING BELOW TO AUTHORIZE COMPLETION OF THIS ORDER.

- APPROVED WITH NO EXCEPTIONS
MANUFACTURE PRODUCT AS PER DRAWING
- APPROVED WITH EXCEPTIONS, NO REAPPROVAL REQUIRED
MAKE CHANGES AS NOTED, NO REAPPROVAL DRAWING REQUIRED
- CHANGE AS NOTED, REAPPROVAL REQUIRED
MAKE CHANGES AS NOTED, SEND CORRECTED DRAWING FOR REAPPROVAL BEFORE MANUFACTURE.

CHANGES REQUEST:

1. _____
2. _____
3. _____
4. _____

SIGNATURE: _____ DATE: _____
CAUTION: ONCE THE DRAWING IS APPROVED, JOB CANCELLATION FEES WILL APPLY.



OFFICE USE ONLY:	
CONFIGURATION VERSION STAMP:	0.0
MOBILE VERSION STAMP:	0-5-7-8-3

Part No. V-1504 ENCLOSURE
Variant No. 170386

GENERAL ARRANGEMENT
ENCLOSED VERTICAL WHEELCHAIR PLATFORM LIFT

CUSTOMER: MOWREY ELEVATOR CO. OF FLORIDA
PROJECT: 106 S. MONROE
ADDRESS: No. Street, City
FLORIDA

DATE: 10/17/19
REVISION DATE: 10/17/19
COMPLETED BY: [Signature]
JOB No. P00000
SHEET No. 1 OF 4

PROVISIONS BY OTHERS

GENERAL

HOISTWAY - THE HOISTWAY MUST BE DESIGNED AND BUILT IN ACCORDANCE WITH 'SAFETY STANDARD FOR PLATFORM LIFTS AND STAIRWAY CHAIRLIFTS' OR 'SAFETY CODE FOR ELEVATORS AND ESCALATORS' AND ALL STATE AND LOCAL CODES.

PLUMB RUNWAY - DUE TO CLOSE RUNNING CLEARANCES OWNER/AGENT MUST ENSURE THAT HOISTWAY AND PIT (WHERE PROVIDED) ARE LEVEL, PLUMB (+/- 1/8" (3 mm)) AND SQUARE AND ARE IN ACCORDANCE WITH THE DIMENSIONS ON THESE DRAWINGS.

MINIMUM OVERHEAD CLEARANCE - OWNER/AGENT MUST ENSURE MINIMUM OVERHEAD CLEARANCE IS IN COMPLIANCE WITH CODES.

CONSTRUCTION SITE - OWNER/AGENT TO PROVIDE ALL MASONRY, CARPENTRY AND DRYWALL WORK AS REQUIRED AND SHALL PATCH AND MAKE GOOD (INCLUDING FINISH PAINTING) ALL AREAS WHERE WALLS/FLOORS MAY REQUIRE TO BE CUT, DRILLED OR ALTERED IN ANY WAY TO PERMIT THE PROPER INSTALLATION OF THE LIFT.

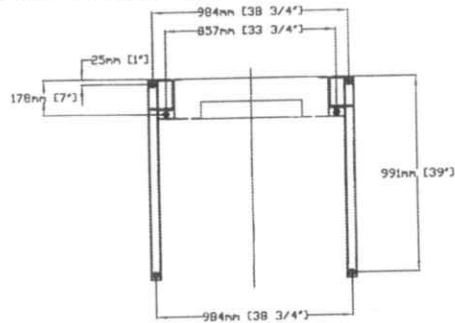
DIMENSIONS - CONTRACTOR/CUSTOMER TO VERIFY ALL DIMENSIONS AND REPORT ANY DISCREPANCIES TO OUR OFFICE IMMEDIATELY.

STRUCTURAL

FLOOR/SUPPORT WALL LOADS - CONTRACTOR TO ASSURE THAT BUILDING AND SHAFT WILL SAFELY SUPPORT ALL LOADS IMPOSED BY THE LIFT EQUIPMENT. REFER TO THE LOAD DIAGRAM ON THIS DRAWING.

MAST TO BE SECURELY FASTENED - WHERE REQUIRED THE MAST MUST BE SECURELY FASTENED TO THE STRUCTURAL SUPPORT WALL. REFER TO WALL / FLOOR SUPPORT LOAD DIAGRAM AND WALL LAG DIMENSIONS ON THIS DRAWING.

WHERE DOORS ARE REQUIRED - SUITABLE LINTELS MUST BE PROVIDED BY OWNER/AGENT. DOOR FRAMES ARE NOT DESIGNED TO SUPPORT OVERHEAD WALL LOADS.



LOADS CALCULATED ON BASED ON ANCHOR POINTS EVERY 48" EVERY TOWER SECTION NEEDS TO BE ANCHORED. IF SPACING IS INCREASED, LOADS PER BRACKETS WILL INCREASE ACCORDINGLY

ELECTRICAL

GENERAL - ELECTRICAL EQUIPMENT AND WIRING TO COMPLY WITH SECTION 38 OF CSA C22.1 (CANADA) OR SECTION 620 OF NEC ANSI/NFPA 70 (USA).

POWER SUPPLY - 120VAC, 20A, 60HZ, 1PH CIRCUIT THROUGH A FUSE DISCONNECT WITH AUXILIARY CONTACT ON MAIN POWER SUPPLY. PROVIDE TWO 18 AWG CONDUCTORS BETWEEN CONTACT AND CONTROLLER.

LIGHTING - LIGHTING OF 100 LX MIN. AT PLATFORM AND LANDINGS. LIGHTING WITH SWITCH AND ELECTRICAL GFCI OUTLET IN HOISTWAY PIT.

PHONE - IF A TELEPHONE CIRCUIT IS REQUIRED, JACK OR PHONE ARE PROVIDED ON THE CAR. A DEDICATED ANALOG PHONE LINE (NO VOIP) IS REQUIRED TO BE PROVIDED BY OTHERS TO THE CONTROLLER FOR VOIP, PLEASE CONTACT SAVARIA.

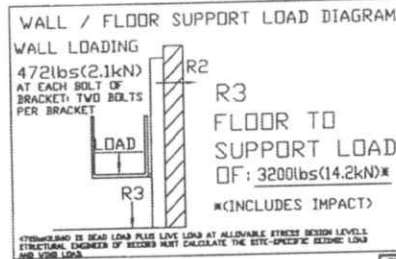
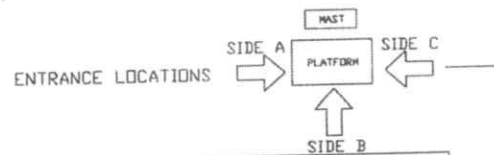
ENTRANCES

UPPER LANDING GATES - WHERE REQUIRED, SMOOTH SOLID BARRIERS ARE TO BE SUPPLIED AND INSTALLED ON BOTH SIDES OF ENTRANCE AT UPPER LEVEL AND MUST BE A MINIMUM OF 42" (1067 mm) HIGH. ENTRANCE ASSEMBLY MUST BE IN PLACE PRIOR TO THIS PROVISION.

FASCIA PANEL BELOW UPPER LEVEL ENTRANCE - WHERE REQUIRED, FASCIA PANEL MUST BE FASTENED TO A SOLID WALL AND BE PERPENDICULAR TO THE FLOOR AND WALLS. HOISTWAY FASCIA IS NOT SELF-SUPPORTING FOR LONG, CONTINUOUS RUNS VOID OF ENTRANCES. ADEQUATE SUPPORT FOR THE FASCIA MUST BE PROVIDED.

ENTRANCE ASSEMBLIES - ENTRANCE ASSEMBLIES MUST BE ADJUSTED TO ALIGN WITH PLATFORM AND INTERLOCK EQUIPMENT. OTHERS TO ALLOW AN ADEQUATE ROUGH OPENING.

RETURN WALLS - RETURN WALLS AT ENTRANCES MUST BE BUILT-IN BY OTHERS AFTER ENTRANCE ASSEMBLIES ARE IN PLACE. ENTRANCE ASSEMBLY MUST BE SECURELY FASTENED TO WALLS.



SPECIFICATIONS

GENERAL

CLASSIFICATION: Enclosed Vertical Wheelchair Platform Lift
APPLIED CODE: ASME A181-2008 Section 2 Pub
SPECIAL NOTE: Not A117.1 Compliant
MODEL: V-1504 Enclosure
CAPACITY: 750 lbs (341 kg)
NOMINAL SPEED: 20 fpm (0.102 m/s)
TRAVEL: 141" (3581 mm)
PIT DEPTH: 0" (0 mm)
PLATFORM SIZE: 36" X 54" (914 mm X 1372 mm)
POWER SUPPLY: 240v/120v/20A/60Hz/SINGLE PHASE
BATTERY BACK UP: up and down direction

JACK UNIT

STROKE: 72" (1829 mm)
PLUNGER O/D: 1.5" (38 mm)
CYL. O/D: 2.125" (54 mm)
CYL. I/D: 1.75" (44 mm)

CONTROLLER

MODEL: V-1504
CPFS: CPFS
QPS #: LR1390-7R1
H.P.: 1.5 HP USED FROM 3HP
MFR.: SAVARIA

POWER UNIT

MOTOR: 3.0 HP, 24V DC
FLOW: 1.15 Gal/min (4.35L/min)

CAB FINISH

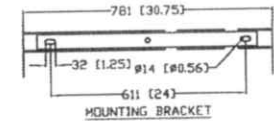
STEEL V PAINT

HYDRAULIC DATA

OIL TYPE: UNIVIS 32 INDOOR
 DEXRON ATF OUTDOOR
GALLONS REQ'D: 1.0 Gal (3.79 L)
MAXIMUM WORKING PRESSURE: 2500 psi (17.2 MPa)
RELIEF PRESSURE: WPx125% MAX.
MAXIMUM RELIEF PRESSURE: 2500 psi (17.2 MPa)
HYDRAULIC HOSE: 1/4" (6.4 mm) ID
BURST: 20000 psi (137.9 MPa)
FITTINGS: 1/4" (6.4 mm) NPT MALE

SUSPENSION CHAIN

2X #50 ROLLER CHAIN
BREAKING STRENGTH: 7171 lbs (31.9 kN) each
SAFETY BRAKE: TYPE 'A'



DOORS / GATES / CALL STATIONS

	LANDING 1	LANDING 2	LANDING 3	LANDING 4
DOOR TYPE	Enclosure 80" Door	Enclosure 80" Door		
ENTRANCE SIDE	a	c		
DOOR SWING	lh	lh		
DOOR INSERT	Clear Plexiglass	Clear Plexiglass		
LOCK TYPE	WR500 Lock (24V)	WR500 Lock (24V)		
AUTO DOOR OPENER	Commander Auto Opener	Commander Auto Opener		
CUSTOM DOOR WIDTH				
CUSTOM DOOR HEIGHT				
IN FRAME CALL STN.	yes	yes		
CALL STN. TYPE	Call/Send Buttons	Call/Send Buttons		
CALL STN. KEYED	OFF Pos. Removeable	OFF Pos. Removeable		
CALL STN. STOP BUTTON				
CALL STN. MOUNTING	Flush Mounted In Frame	Flush Mounted In Frame		
INSULATED PRODDOR KIT	No	No		

OPTIONS PROVIDED

EMERGENCY PENDENT PLUG IN MANUAL LOWERING BOX

VINGS:	no	RAMP:	Permanent Ramp (121)
TOUCH UP PAINT:	1 can(s)	EXTRA KEYS:	0
BUILDING:	Public Building	WALL FASTENERS:	none
LIGHT CURTAIN:	no	UNDERPAN SENSOR:	no
PHONE OR PHONE PLUG:	Hands free phone	UNIT COLOUR:	Standard Color - Almond Beige
FLOOD SWITCH:	no	FLOOR:	Anti-Skid Paint (Grey)
REMOTE MACHINE ROOM:	Not required	FOLD SEAT:	no
LOCATION:	INDOOR		

OFFICE USE ONLY:

CONFIRMATION VERSION STAMP: 0.0
 MEDIA VERSION STAMP: 15-183

Part No. V-1504 ENCLOSURE

Version No. 170386

CUSTOMER: MOWREY ELEVATOR CO. OF FLORIDA

PROJECT: 106 S. MONROE

ADDRESS: No. Street, City

FLORIDA

DATE: 10/17/19

REVISION DATE: 10/17/19

COMPLETED BY: [Signature]

JOB No. P00000

SHEET No. 2 OF 4

DATA SHEET

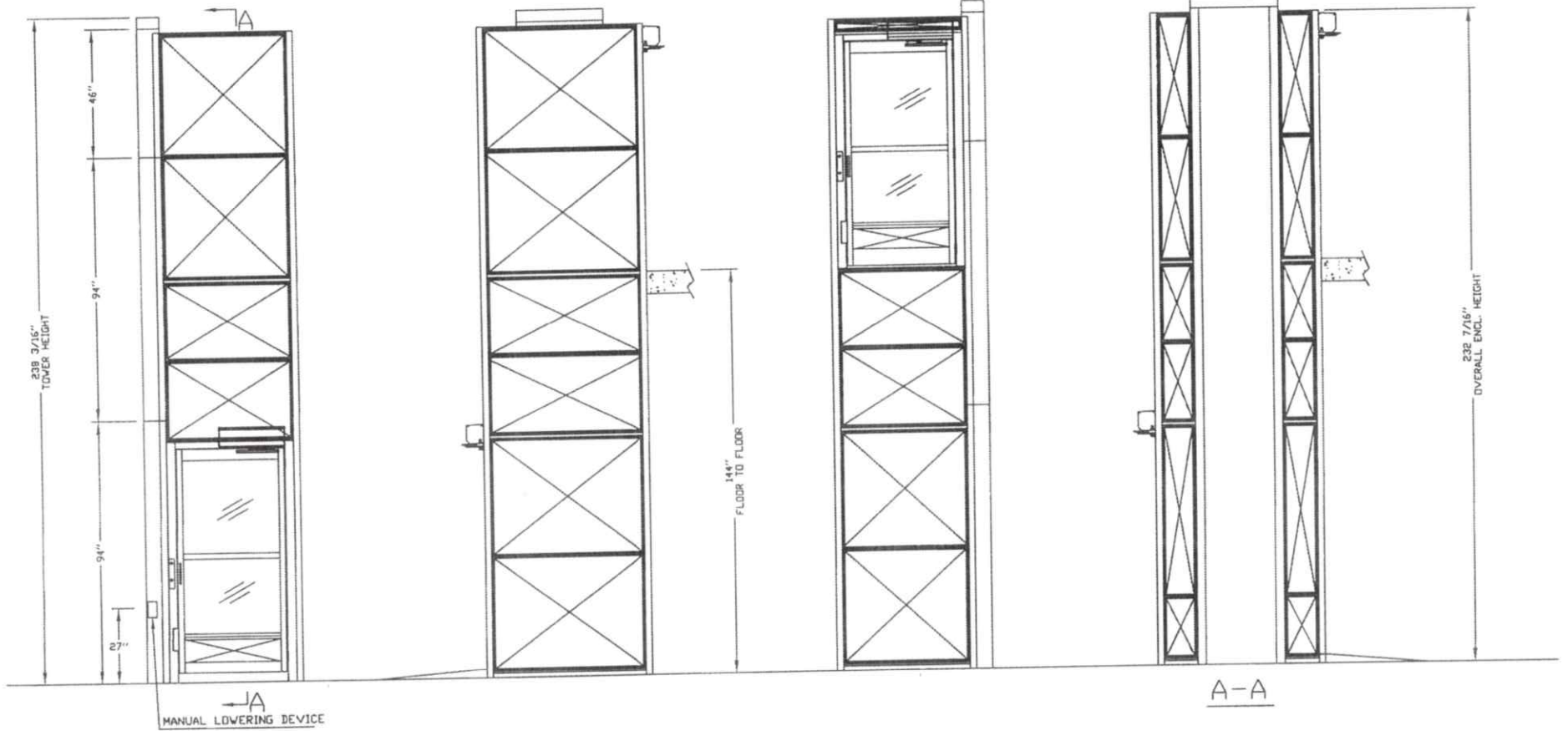
ENCLOSED VERTICAL WHEELCHAIR PLATFORM LIFT

SAVARIA

SAVARIA

SAVARIA

PANEL DRAWING



INSERT STYLE: DOOR & GATE

☒ SHEET METAL

▨ CLEAR PLEXIGLASS

INSERT STYLE: Enclosure

☒ SHEET METAL

▨ GLASS

ELEVATION VIEWS
ENCLOSED VERTICAL WHEELCHAIR PLATFORM LIFT

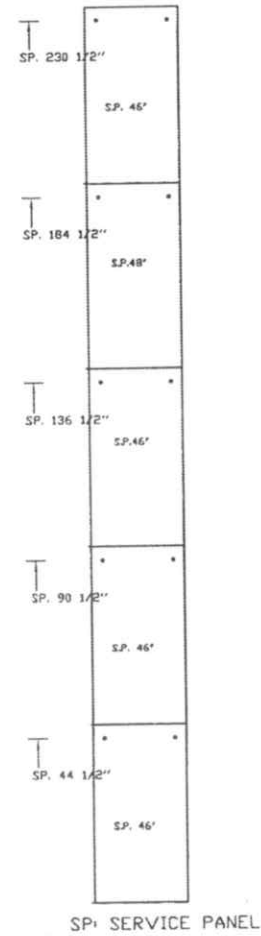
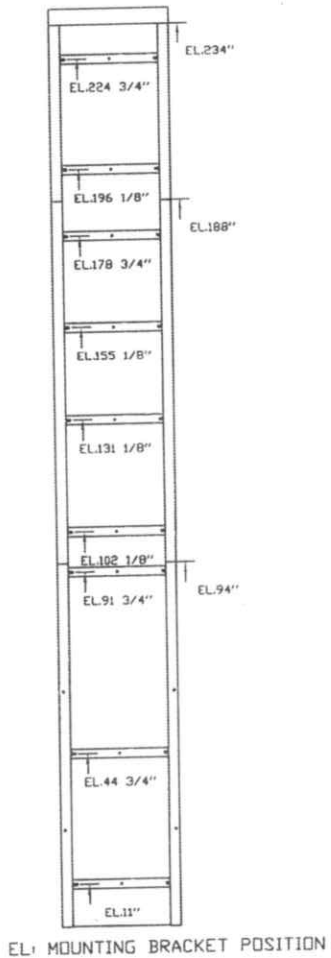
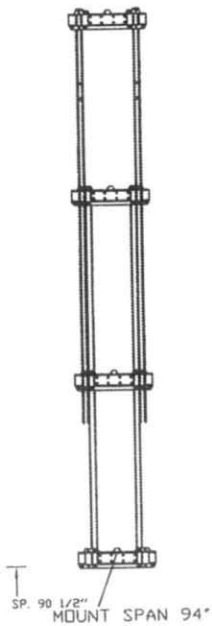
OFFICE USE ONLY:
CONFIGURATION VERSION STAMP: 0.0
MODEL VERSION STAMP: H-783

Part No. V-1504 ENCLOSURE
Variant No. 170386

CUSTOMER: MOWREY ELEVATOR CO. OF FLORIDA
PROJECT: 106 S. MONROE
ADDRESS: No. Street, City
FLORIDA

DATE: 10/17/19
REVISION DATE: 10/17/19
COMPLETED BY: ENCL-ENCLOSURE

JOB No. P00000
SHEET No. 3 OF 4



LOADS CALCULATED ON BASED ON ANCHOR POINTS EVERY 48"
 EVERY TOWER SECTION NEEDS TO BE ANCHORED. IF SPACING
 IS INCREASED, LOADS PER BRACKETS WILL INCREASE ACCORDINGLY

ELEVATION VIEWS
 ENCLOSED VERTICAL WHEELCHAIR PLATFORM LIFT

OFFICE USE ONLY:		Part No. V-1504 ENCLOSURE
CONFIGURATION VERSION STAMP:	0.0	Variant No. 170386
MOBILE VERSION STAMP:	15-18	
CUSTOMER:	DATE:	
MOWREY ELEVATOR CO. OF FLORIDA	10/17/19	
PROJECT:	ISSUE DATE:	
106 S. MONROE	10/17/19	
ADDRESS:	COMPLETED BY:	
No. Street, City	SECRET	
FLORIDA		
JOB No. P00000	SHEET No. 4 OF 4	