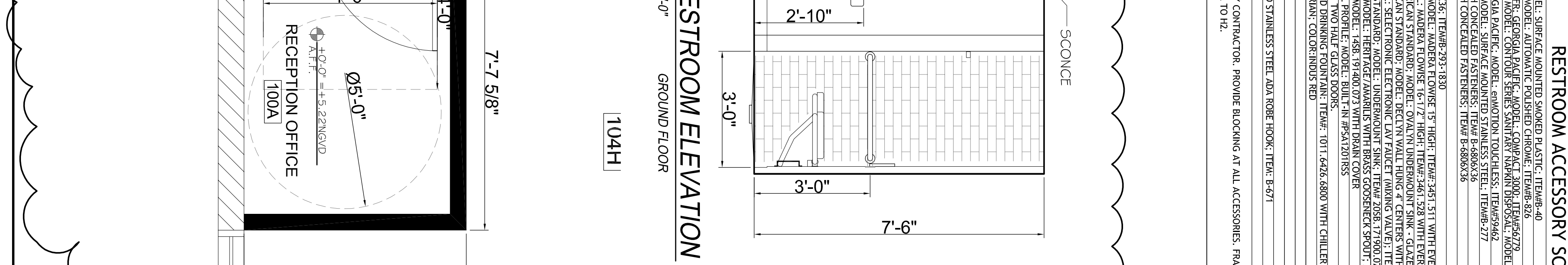
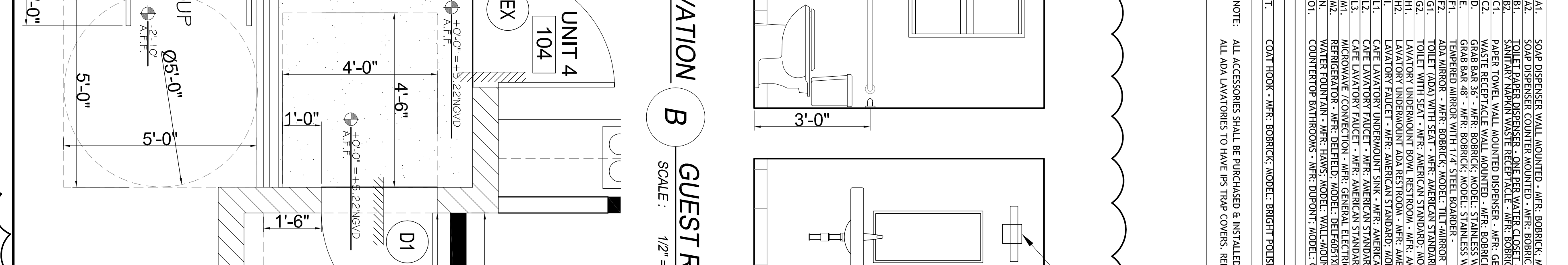
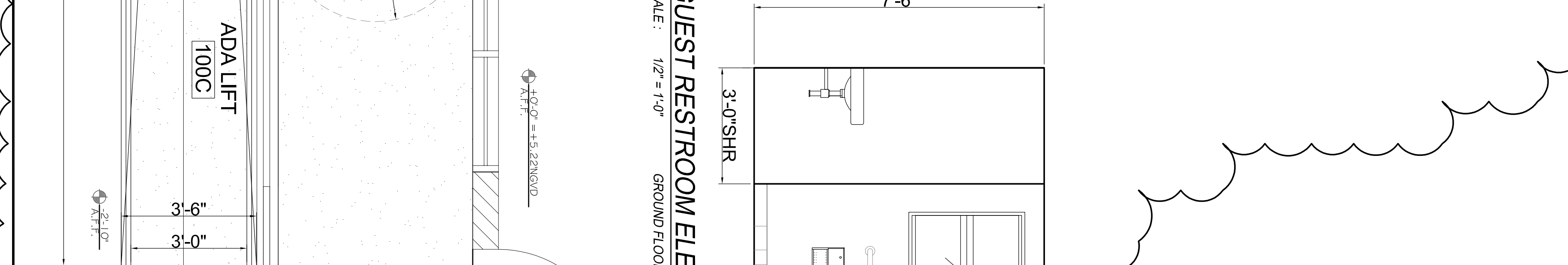
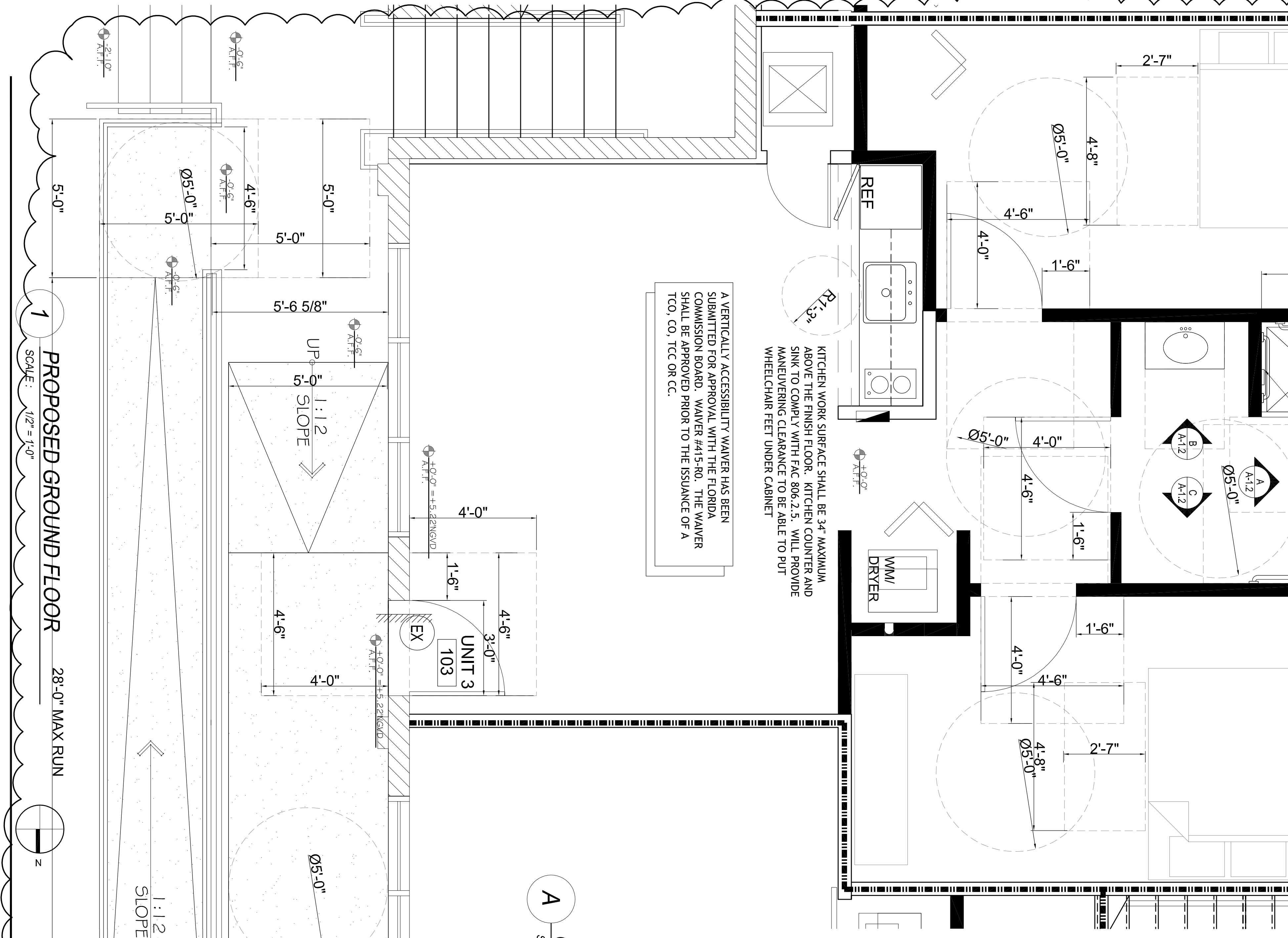
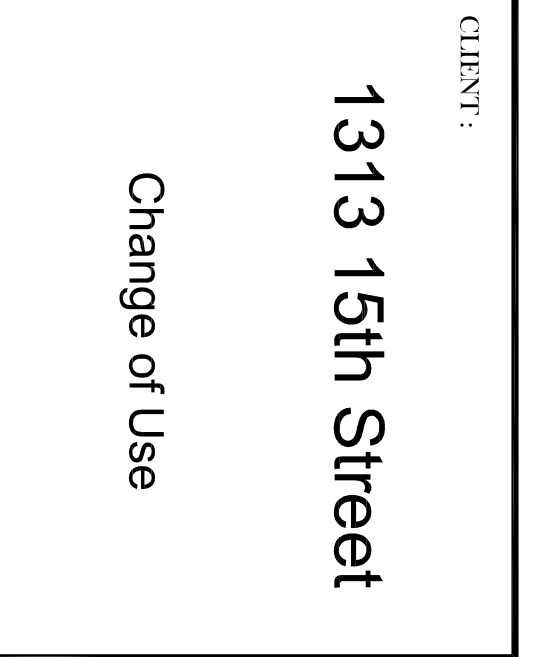


BATHROOM ACCESSORY & FIXTURE WITH MOUNTING HEIGHTS REQUIREMENTS

NO.	DESCRIPTION	MODEL	FINISH
A1.	SOAP DISPENSER WALL MOUNTED	- MFR: ROBRICK, MODEL: SURFACE MOUNTED SIGNED IN A31C, ITEM#-49	
A2.	SOAP DISPENSER COUNTER MOUNTED	- MFR: ROBRICK, MODEL: AUTOMATIC POLISHED CHROME, ITEM#-8-26	
B1.	TOILET PAPER DISPENSER - ONE REEL	- MFR: GEORGIA PACIFIC, MODEL: COMPACT 3000, ITEM#-5479	
B2.	TOILET PAPER DISPENSER - TWO REELS	- MFR: ROBRICK, MODEL: CONDO SERIES SENSITARY TAPER DISPENSER, MODEL: B-270	
C1.	WASTE RECEPTACLE WALL MOUNTED	- MFR: ROBRICK, MODEL: SURFACE MOUNTED STAINLESS STEEL, ITEM#-277	
C2.	WASTE RECEPTACLE COUNTER MOUNTED	- MFR: ROBRICK, MODEL: STAINLESS WITH CONCEALED FASTENERS, ITEM#-B-8000-36	
D.	GRAB BAR 36"	- MFR: ROBRICK, MODEL: STAINLESS WITH CONCEALED FASTENERS, ITEM#-B-8000-36	
E.	GRAB BAR 48"	- MFR: ROBRICK, MODEL: STAINLESS WITH CONCEALED FASTENERS, ITEM#-B-8000-36	
F1.	ADA HARBOR	- MFR: AMERICAN STANDARD, TILT-HARBOR, ITEM#-793-1830	
F2.	ADA HARBOR	- MFR: AMERICAN STANDARD, TILT-HARBOR, ITEM#-793-1830	
G1.	TOILET WITH SEAT	- MFR: AMERICAN STANDARD, MODEL: MAJESTY TOWER 15" HIGH, ITEM#-3451-3511 WITH EVERCLEAN SELECTRONIC FLUSH VALVE (SEAT-T00)	
G2.	TOILET WITH SEAT	- MFR: AMERICAN STANDARD, MODEL: MAJESTY TOWER 15" HIGH, ITEM#-3451-3528 WITH EVERCLEAN SELECTRONIC FLUSH VALVE (SEAT-T00)	
H1.	LAVATORY UNDERMOUNT ADA RESTROOM	- MFR: AMERICAN STANDARD, MODEL: ELECTRIC WALL HUNG 4" CENTERS WITH CONCEALED JAMS - GLAZED UNDERSIDE, ITEM#- 241-075, COLOR: WHITE	
H2.	LAVATORY UNDERMOUNT ADA RESTROOM	- MFR: AMERICAN STANDARD, MODEL: ELECTRIC WALL HUNG 4" CENTERS WITH CONCEALED JAMS - GLAZED UNDERSIDE, ITEM#- 241-075, COLOR: WHITE	
I.	LAVATORY FAUCET	- MFR: AMERICAN STANDARD, MODEL: SELECTRONIC ELECTRONIC LAV FAUCET TAPPING VALVE, ITEM#- 6056, 105-200 1/4" COVER PLATE, COLOR: CHROME	
L1.	CARE LAVATORY UNDERMOUNT	- MFR: AMERICAN STANDARD, MODEL: UNDERMOUNT SINK, ITEM#- 7700-L073 WITH 2451-3130/073 ROTUM CHILL, R-79156-07306 WASTE FIT	
L2.	CARE LAVATORY UNDERMOUNT	- MFR: AMERICAN STANDARD, MODEL: UNDERMOUNT SINK, ITEM#- 7700-L073 WITH 2451-3130/073 ROTUM CHILL, R-79156-07306 WASTE FIT	
M1.	MICROWAVE / CONVECTION	- MFR: GENERAL ELECTRIC, MODEL: 1458, 19"X20"X27" WITH TRAY COVER	
N.	WATER HEATER	- MFR: WATER HEATER, MODEL: WATER HEATER, ITEM#- 2451-3130/073 ROTUM CHILL, R-79156-07306 WASTE FIT	
N1.	WATER HEATER	- MFR: WATER HEATER, MODEL: WATER HEATER, ITEM#- 2451-3130/073 ROTUM CHILL, R-79156-07306 WASTE FIT	
O1.	COUNTERTOP BATHROOMS	- MFR: DUPONT, MODEL: CORIAN, COLOR:INDUS RED	
T.	COAT HOOK	- MFR: ROBRICK, MODEL: BRIGHT POLISHED STAINLESS STEEL ADA ROBE HOOK, ITEM: B-671	

NOTE: ALL ACCESSORIES SHALL BE PURCHASED & INSTALLED BY CONTRACTOR. PROVIDE BLOCKING AT ALL ACCESSORIES. FRAME OPENING AT RECESSED ACCESSORIES. ALL ADA LAVATORIES TO HAVE IPS TUB COVERS. REFER TO IZ.



BATHROOM ACCESSORY & FIXTURE WITH MOUNTING HEIGHTS REQUIREMENTS

NO.	DESCRIPTION	MODEL	FINISH
A1.	SOAP DISPENSER WALL MOUNTED	- MFR: ROBRICK, MODEL: SURFACE MOUNTED SIGNED IN A31C, ITEM#-49	
A2.	SOAP DISPENSER COUNTER MOUNTED	- MFR: ROBRICK, MODEL: AUTOMATIC POLISHED CHROME, ITEM#-8-26	
B1.	TOILET PAPER DISPENSER - ONE REEL	- MFR: GEORGIA PACIFIC, MODEL: COMPACT 3000, ITEM#-5479	
B2.	TOILET PAPER DISPENSER - TWO REELS	- MFR: ROBRICK, MODEL: CONDO SERIES SENSITARY TAPER DISPENSER, MODEL: B-270	
C1.	WASTE RECEPTACLE WALL MOUNTED	- MFR: ROBRICK, MODEL: SURFACE MOUNTED STAINLESS STEEL, ITEM#-277	
C2.	WASTE RECEPTACLE COUNTER MOUNTED	- MFR: ROBRICK, MODEL: STAINLESS WITH CONCEALED FASTENERS, ITEM#-B-8000-36	
D.	GRAB BAR 36"	- MFR: ROBRICK, MODEL: STAINLESS WITH CONCEALED FASTENERS, ITEM#-B-8000-36	
E.	GRAB BAR 48"	- MFR: ROBRICK, MODEL: STAINLESS WITH CONCEALED FASTENERS, ITEM#-B-8000-36	
F1.	ADA HARBOR	- MFR: AMERICAN STANDARD, TILT-HARBOR, ITEM#-793-1830	
F2.	ADA HARBOR	- MFR: AMERICAN STANDARD, TILT-HARBOR, ITEM#-793-1830	
G1.	TOILET WITH SEAT	- MFR: AMERICAN STANDARD, MODEL: MAJESTY TOWER 15" HIGH, ITEM#-3451-3511 WITH EVERCLEAN SELECTRONIC FLUSH VALVE (SEAT-T00)	
G2.	TOILET WITH SEAT	- MFR: AMERICAN STANDARD, MODEL: MAJESTY TOWER 15" HIGH, ITEM#-3451-3528 WITH EVERCLEAN SELECTRONIC FLUSH VALVE (SEAT-T00)	
H1.	LAVATORY UNDERMOUNT ADA RESTROOM	- MFR: AMERICAN STANDARD, MODEL: ELECTRIC WALL HUNG 4" CENTERS WITH CONCEALED JAMS - GLAZED UNDERSIDE, ITEM#- 241-075, COLOR: WHITE	
H2.	LAVATORY UNDERMOUNT ADA RESTROOM	- MFR: AMERICAN STANDARD, MODEL: ELECTRIC WALL HUNG 4" CENTERS WITH CONCEALED JAMS - GLAZED UNDERSIDE, ITEM#- 241-075, COLOR: WHITE	
I.	LAVATORY FAUCET	- MFR: AMERICAN STANDARD, MODEL: SELECTRONIC ELECTRONIC LAV FAUCET TAPPING VALVE, ITEM#- 6056, 105-200 1/4" COVER PLATE, COLOR: CHROME	
L1.	CARE LAVATORY UNDERMOUNT	- MFR: AMERICAN STANDARD, MODEL: UNDERMOUNT SINK, ITEM#- 7700-L073 WITH 2451-3130/073 ROTUM CHILL, R-79156-07306 WASTE FIT	
L2.	CARE LAVATORY UNDERMOUNT	- MFR: AMERICAN STANDARD, MODEL: UNDERMOUNT SINK, ITEM#- 7700-L073 WITH 2451-3130/073 ROTUM CHILL, R-79156-07306 WASTE FIT	
M1.	MICROWAVE / CONVECTION	- MFR: GENERAL ELECTRIC, MODEL: 1458, 19"X20"X27" WITH TRAY COVER	
N.	WATER HEATER	- MFR: WATER HEATER, MODEL: WATER HEATER, ITEM#- 2451-3130/073 ROTUM CHILL, R-79156-07306 WASTE FIT	
N1.	WATER HEATER	- MFR: WATER HEATER, MODEL: WATER HEATER, ITEM#- 2451-3130/073 ROTUM CHILL, R-79156-07306 WASTE FIT	
O1.	COUNTERTOP BATHROOMS	- MFR: DUPONT, MODEL: CORIAN, COLOR:INDUS RED	
T.	COAT HOOK	- MFR: ROBRICK, MODEL: BRIGHT POLISHED STAINLESS STEEL ADA ROBE HOOK, ITEM: B-671	

NOTE: ALL ACCESSORIES SHALL BE PURCHASED & INSTALLED BY CONTRACTOR. PROVIDE BLOCKING AT ALL ACCESSORIES. FRAME OPENING AT RECESSED ACCESSORIES. ALL ADA LAVATORIES TO HAVE IPS TUB COVERS. REFER TO IZ.

CASTELLANOS DESIGN STUDIO
7300 BISCAYNE BLVD, SUITE 200
MIAMI, FL 33138
Tel: 786.218.5335
License #AA 26002467
WWW.CASTELLANOSDESIGN.COM

CLIENT:
1313 15th Street
Miami Beach, FL 33139
Folio: 02-3233-016-0140

Change of Use

1313 15th Street
Miami Beach, FL 33139
Folio: 02-3233-016-0140

NO. DATE ISSUED / REVISED

1 22 AUG/16 CONSTRUCTION DOCUMENTS

2 24 OCT/19 PERMIT REV & DESIGN CHANGE / A

3

4

WESLEY ART CASTELLANOS
FLORIDA ARCHITECT LICENSE #616133
PROJECT NO.: 2016-17

ACCESSIBLE UNIT & INTERIOR ELEVATIONS

CHECKED BY: WJC SHEET NO.: A-1.2

DRAWN BY: WJC

SCALE: 1/2" = 1'-0"

© 2019 BY CDS