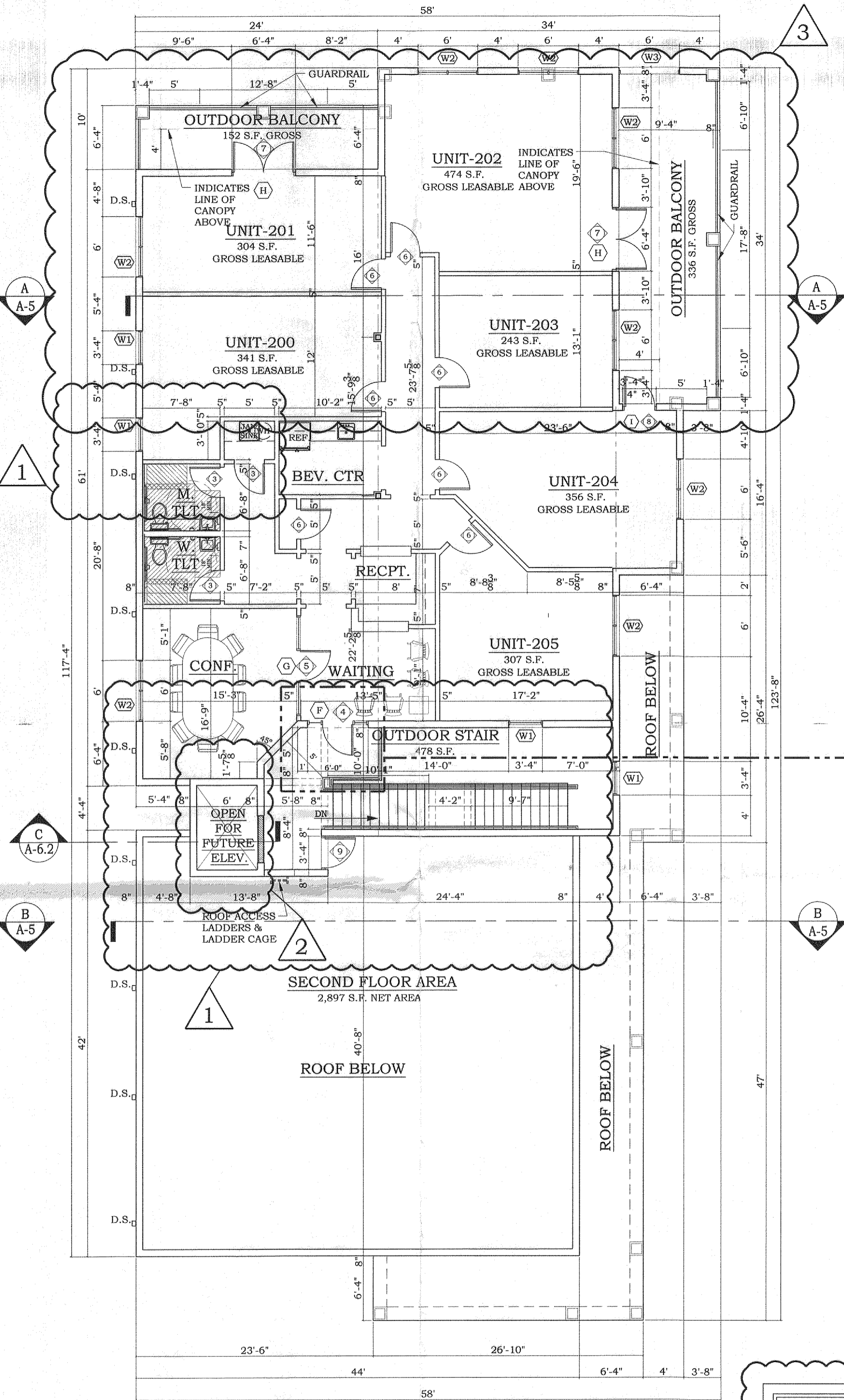
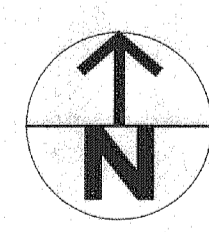
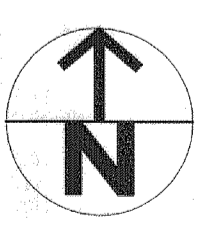


FIRST FLOOR PLAN
SCALE: 1/8" = 1'-0"



SECOND FLOOR PLAN
SCALE: 1/8" = 1'-0"



WALL LEGEND

[Symbol]	8" CMU WALL 1-HOUR FIRE RATED (SEE SHEET A10)
[Symbol]	NON-RATED FRAME WALL ASSEMBLY WITH 3" OR 6" MTL STUDS @ 16" O.C.
[Symbol]	1-HOUR FIRE RATED FRAME WALL ASSEMBLY WITH 3" OR 6" METAL STUDS @ 16" O.C. (SEE SHEET A10.1) NOTE: PROVIDE STUCCO FINISH TO MATCH EXISTING ADJACENT SURFACE IN EXTERIOR APPLICATIONS.

GENERAL

ALL NON-LOAD BEARING FRAME WALLS TO BE 3" OR 6" MTL STUDS UNLESS OTHERWISE NOTED.

ALL PLUMBING WALLS TO BE 6" MTL STUDS UNLESS OTHERWISE NOTED.

OCCUPANCY CALCULATIONS

TOTAL BUILDING OCCUPANCY AREA = 7,246 S.F.

1st FLOOR OCCUPANCY CALCULATIONS:

UNIT 101 = 1,252 S.F. + 30 (MERCANTILE) = 42 OCCUPANTS
 UNIT 102 = 1,252 S.F. + 30 (MERCANTILE) = 42 OCCUPANTS
 UNIT 103 = 496 S.F. + 30 (MERCANTILE) = 17 OCCUPANTS
 UNIT 104 = 1,228 S.F. (FUTURE RESTAURANT) 120 S.F. (FUTURE OUTDOOR SEATING)
 (MAX. FUTURE OCCUPANT LOAD) = 36 OCCUPANTS (INCLUDES OUTDOOR SEATING)

1st FLOOR TOTAL = 137 OCCUPANTS

2nd FLOOR OCCUPANCY CALCULATIONS:

UNIT 201 - 205 = 2,898 S.F. + 100 (BUSINESS) = 29 OCCUPANTS

2nd FLOOR TOTAL = 29 OCCUPANTS

TOTAL BUILDING OCCUPANCY LOAD = 166 OCCUPANTS

BUILDING AREA CALCULATIONS

1st FLOOR GROSS BUILDING AREAS

UNIT - 101 = 1,328 S.F.
 UNIT - 102 = 1,328 S.F.
 UNIT - 103 = 531 S.F.
 UNIT - 104 = 1,244 S.F.

SUBTOTAL (GROSS LEASABLE (A/C) UNIT BLDG. AREA) = 4,431 S.F.

OUTDOOR COVERED STAIR (COMMON AREA) = 555 S.F.
 OUTDOOR COVERED WALKWAYS (COMMON AREA) = 1,433 S.F.

SUBTOTAL (GROSS OUTDOOR COVERED BLDG. AREA) = 2,046 S.F.

TOTAL 1st FLOOR BUILDING AREAS = 6,419 S.F.
 GROSS OUTDOOR SEATING AREA (UNIT 104) = 120 S.F.

2nd FLOOR GROSS BUILDING AREAS

UNIT - 200 = 341 S.F.
 UNIT - 201 = 304 S.F.
 UNIT - 202 = 474 S.F.
 UNIT - 203 = 243 S.F.
 UNIT - 204 = 356 S.F.
 UNIT - 205 = 307 S.F.
 COMMON OFFICE AREA = 1,055 S.F.

SUBTOTAL (GROSS LEASABLE (A/C) UNIT BLDG. AREA) = 3,080 S.F.

OUTDOOR BALCONY #1 (COMMON AREA) = 152 S.F.
 OUTDOOR BALCONY #2 (COMMON AREA) = 336 S.F.

SUBTOTAL (GROSS OUTDOOR BALCONY AREA) = 488 S.F.

TOTAL 2nd FLOOR BUILDING AREAS = 3,568 S.F.

- DESIGN FEATURES PROVIDED**
- BUILDING FACADES:**
 - ALL FACADES OF THE BUILDING ARE DESIGNED WITH CONSISTENT ARCHITECTURAL STYLE, DETAIL AND TRIM FEATURES.
 - N/A
 - THE BUILDING IS LOCATED AT THE INTERSECTION OF TWO ARTERIAL ROADS AND INCLUDES DESIGN FEATURES EMPHASIZING ITS LOCATION AS A GATEWAY AND TRANSITION POINT WITHIN THE COMMUNITY.
 - PRIMARY FACADE STANDARDS:**
 - BUILDING ENTRANCE:** MAIN ENTRANCE(S) CLEARLY DEFINED
 - DESIGN FEATURES:** MUST HAVE A MIN. OF 2 OF THE FOLLOWING
 - GLAZED AREA = 41%
 - COVERED ENTRY(S) AND MIN. 20% WINDOWS & GLAZED DOORS
 - COVERED WALKWAY WITH 16" SQUARE COLUMNS
 - FACADE / WALL HEIGHT TRANSITION ELEMENTS:**
 - DESIGN STANDARDS**
 - 30 FEET MAX. HEIGHT
 - MASSING ELEMENTS INCORPORATED FOR A MIN. OF 60% OF THE LENGTH OF THE FACADE
 - TRANSITIONAL MASSING ELEMENTS INCLUDE WALL PLANE CHANGES, ROOFS, CANOPIES, COLONNADES WITH THE MIN. DEPTH FOR PROJECTIONS AND RECESSES AS FOLLOWS:
 - FOR BUILDINGS UP TO 9,999 SQ. FT. IN GROSS BLDG. AREA, PROJECTIONS & RECESSES WITH MIN. DEPTH OF 4 FEET
 - VARIATION IN MASSING:**
 - PROJECTIONS AND RECESSES**
 - A MAX. LENGTH, AT ANY POINT, MUST BE 75 LINEAR FEET. PROJECTIONS AND RECESSES MUST HAVE A MIN. DEPTH OF 2 FEET WITHIN 75 L.F. LIMITATION
 - WALL PLANE CHANGES**
 - NO SINGLE WALL PLANE EXCEEDING 60% OF EACH FACADE
 - BUILDING DESIGN TREATMENTS - EACH BLDG. FACADE MUST HAVE AT LEAST 4 OF THE FOLLOWING DESIGN TREATMENTS**
 - CANOPIES INTEGRATED WITHIN THE BLDG. MASSING
 - OVERHANGS, MINIMUM OF 3 FEET
 - COLONNADES OR ARCADES, A MIN. OF 8 FEET IN WIDTH
 - DISPLAY WINDOWS
 - STRUCTURAL ARCHITECTURAL DETAILS INTEGRATED INTO BUILDING STRUCTURE AND OVERALL DESIGN
 - COVERED ENTRY WITH MINIMUM DIMENSION 8 FEET AND THE MINIMUM AREA OF 100 SQUARE FEET
 - COLUMNS
 - EXPRESSED OR EXPOSED STRUCTURAL ELEMENTS
 - SITE DESIGN ELEMENTS - (BY CIVIL ENGINEER)**

McHARRIS PLANNING & DESIGN
11338 BONITA BEACH ROAD
BONITA SPRINGS, FL 34135
PHONE: (239) 948-6688
FAX: (239) 948-6689
MOBILE: (239) 821-9999

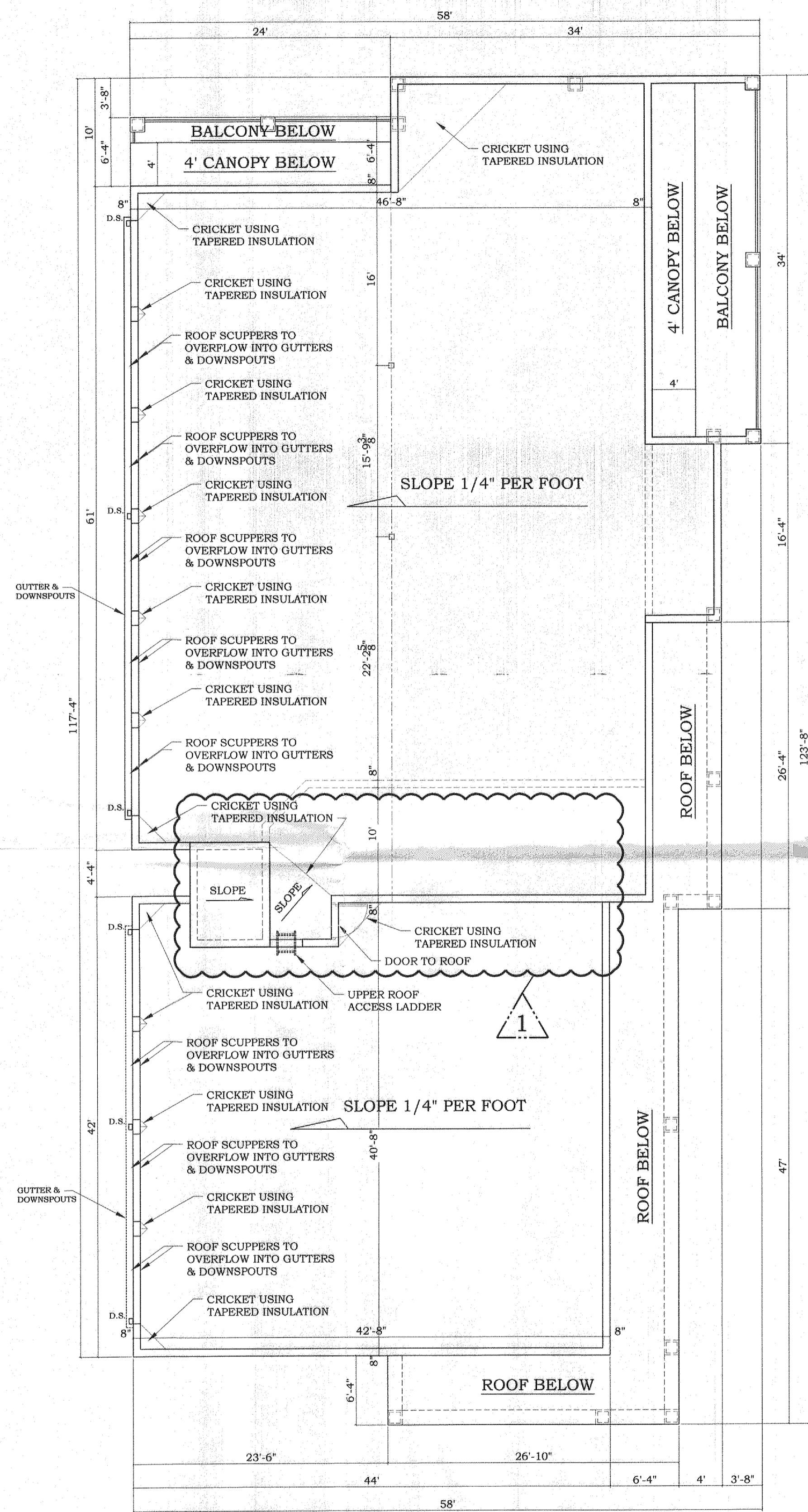
GOETTLER ARCHITECT
FLORIDA REG. NO. AR0009382
11338 BONITA BEACH ROAD, SUITE 103
BONITA SPRINGS, FL 34135
PHONE: (239) 948-6688
FAX: (239) 948-6689
EMAIL: greg@goettlerarch.com

808 WIGGIN'S PASS
808 Wiggins Pass Road
Naples, Florida 34110

Project Name and Address: 808 WIGGIN'S PASS
Project No.: C16-0011
Client Name: 1st FLOOR PLAN
1st FLOOR PLAN
2nd FLOOR PLAN
APPLICABLE DESIGN FEATURES & S.F. CALC'S
Sheet No.: A2

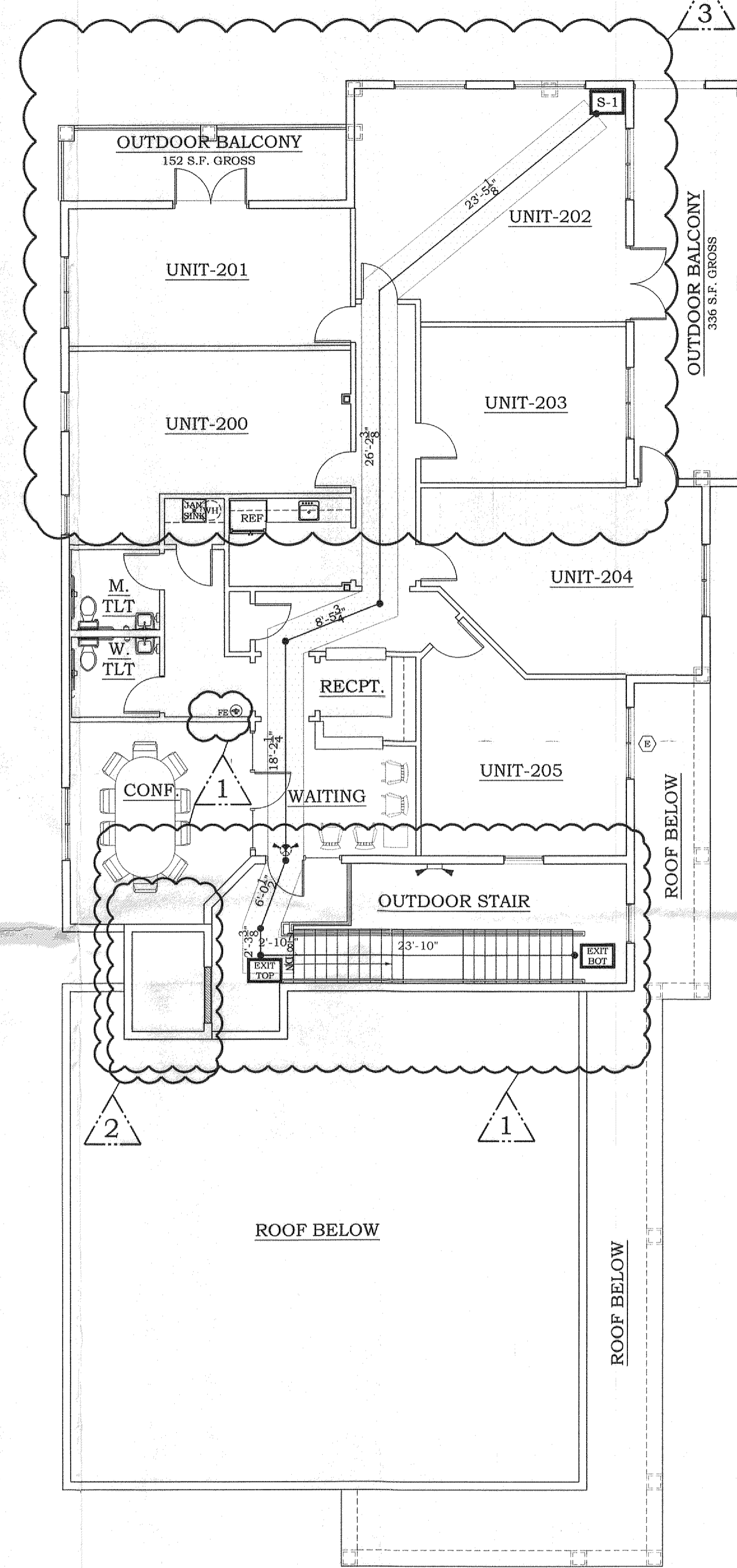
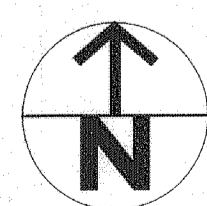
Check by:	JOE McHARRIS	Date:	9-30-17
Drawn by:	GRS	Issue:	
Scale:	AS NOTED	Revision:	
Project No.:	C16-0011	By:	

JOSEPH M. McHARRIS, Inc. hereby certifies that common law design, these ideas, designs and plans are not to be reproduced, copied or used in any form or by any means, without written permission from Joseph M. McHARRIS, Inc. over scale dimensions. Contractor shall verify and seal all drawings. Joseph M. McHARRIS, Inc. shall be notified in writing of any changes to these drawings. All communications shall be in accordance with all state and local codes.



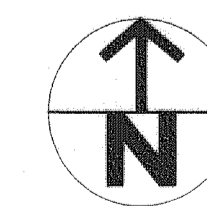
ROOF PLAN

SCALE: 1/8" = 1'-0"



LIFE SAFETY PLAN

SCALE: 1/8" = 1'-0"



EGRESS TRAVEL DISTANCE

MAXIMUM ALLOWED FOR BUSINESS OCCUPANCY PER FBC 2010 TABLE 1015.1: 300 FT (SPRINKLERED) (WORST CASE SCENARIOS SHOWN)

START POINT	TOP STAIR	BOT. STAIR
S-1	87'-6"	111'-4"

FIRE PROTECTION NOTES

FIRE ALARM & FIRE SPRINKLERS:
FIRE ALARM SYSTEM & FIRE SPRINKLER SYSTEM ARE TO BE PROVIDED (UNDER SEPARATE PERMIT).

FIRE EXTINGUISHERS (VERIFY WITH FIRE MARSHALL):
PORTABLE FIRE EXTINGUISHERS SHALL COMPLY WITH AND BE INSTALLED, INSPECTED AND MAINTAINED IN ACCORDANCE WITH NFPA 10, 2013 EDITION, "STANDARD FOR PORTABLE FIRE EXTINGUISHERS".

UNLESS OTHERWISE REQUESTED BY THE FIRE MARSHALL, PROVIDE (1) 2A:10B-C MULTIPURPOSE FIRE EXTINGUISHER FOR EVERY 3,000 SF OF FLOOR SPACE PER NFPA 10/2013, TABLE 6.2.1.1, FIRE EXTINGUISHER SIZE AND PLACEMENT FOR "CLASS A HAZARDS" (LIGHT HAZARD OCCUPANCY) AND TABLE 6.3.1.1 FIRE EXTINGUISHER SIZE AND PLACEMENT FOR "CLASS B HAZARDS" (LIGHT).

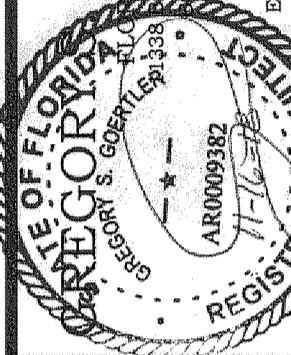
DEMISING WALLS:
ALL NEW FIRE WALLS, FIRE BARRIERS, FIRE PARTITIONS, SMOKE BARRIERS, SMOKE PARTITIONS, OR MAY WALL REQUIRED TO HAVE PROTECTED OPENINGS SHALL BE PERMANENTLY IDENTIFIED WITH SIGNS OR STENCILING ABOVE ANY DECORATIVE CEILING AND IN CONCEALED SPACES WITH THE WORDING "FIRE AND SMOKE BARRIER PROTECTED OPENINGS" OR SIMILAR LANGUAGE IN 4" HIGH LETTERS (1/12 STROKE) AND NOT MORE THAN 15'-0" ON CENTER PER FPFC 101.8.3.2.4.

FIRE SYMBOLS:
FE (R) DENOTES SEMI-RECESSED FIRE EXTINGUISHER IN THIS LOCATION

SIGNAGE:
THE SYMBOL BELOW DENOTES THE FIRE IDENTIFICATION SYMBOL TO BE APPLIED TO MAIN ENTRY DOORS AND ENTRYWAYS IN ACCORDANCE WITH FLORIDA STATUTE 633.027 & RULE 69A-60.0081.

SYMBOL LEGEND

SYMBOL	ELEVATION TYPE
	2x4 FLOURESCENT LIGHT FIXTURE
	DOWNLIGHT FIXTURE
	DIRECTIONAL WALL WASHER
	COMBINATION EXIT/EMER. LIGHT
	EXIT LIGHT
	DIRECTIONAL EXIT LIGHT
	STROBE LIGHT
	EMERGENCY LIGHT



Joseph M. McHarris, Inc. hereby certifies that the common law and design. These ideas, designs and plans are not to be reproduced, copied, or used in any way without the written permission of Joseph M. McHarris, Inc. over scale dimensions. Contractor shall verify and seal. Joseph M. McHarris, Inc. shall be notified in writing of any changes to these drawings. All construction shall be in accordance with all state and local codes.

Revision	By	Date
11-16-18	GSB	
3-2-18	GSB	
12-12-17	GSB	

No.	Revision	By	Date
1	9-20-17	GSB	

Check by: JOE MCHARRIS
Drawn by: GSB
Scale: AS NOTED
Project No.: C16-0011

Sheet Name:
ROOF PLAN & LIFE SAFETY PLAN