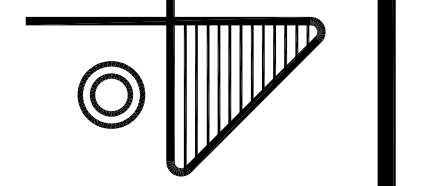


AP Construction
Contractor, LLC
439 River Isle Ct.
Longwood, Florida 32779

New Control Room
FOR
Florida Caribbean Distillers Co
425 Recker Highway, Auburndale, Polk County, Florida

JULIAN J. GARCIA
Architect - Engineer
709 West Central Avenue • Winter Haven, Florida 33880
Phone: (863) 294-1760
Web Site: jgarcia.com
Email: architect@jgarcia.com

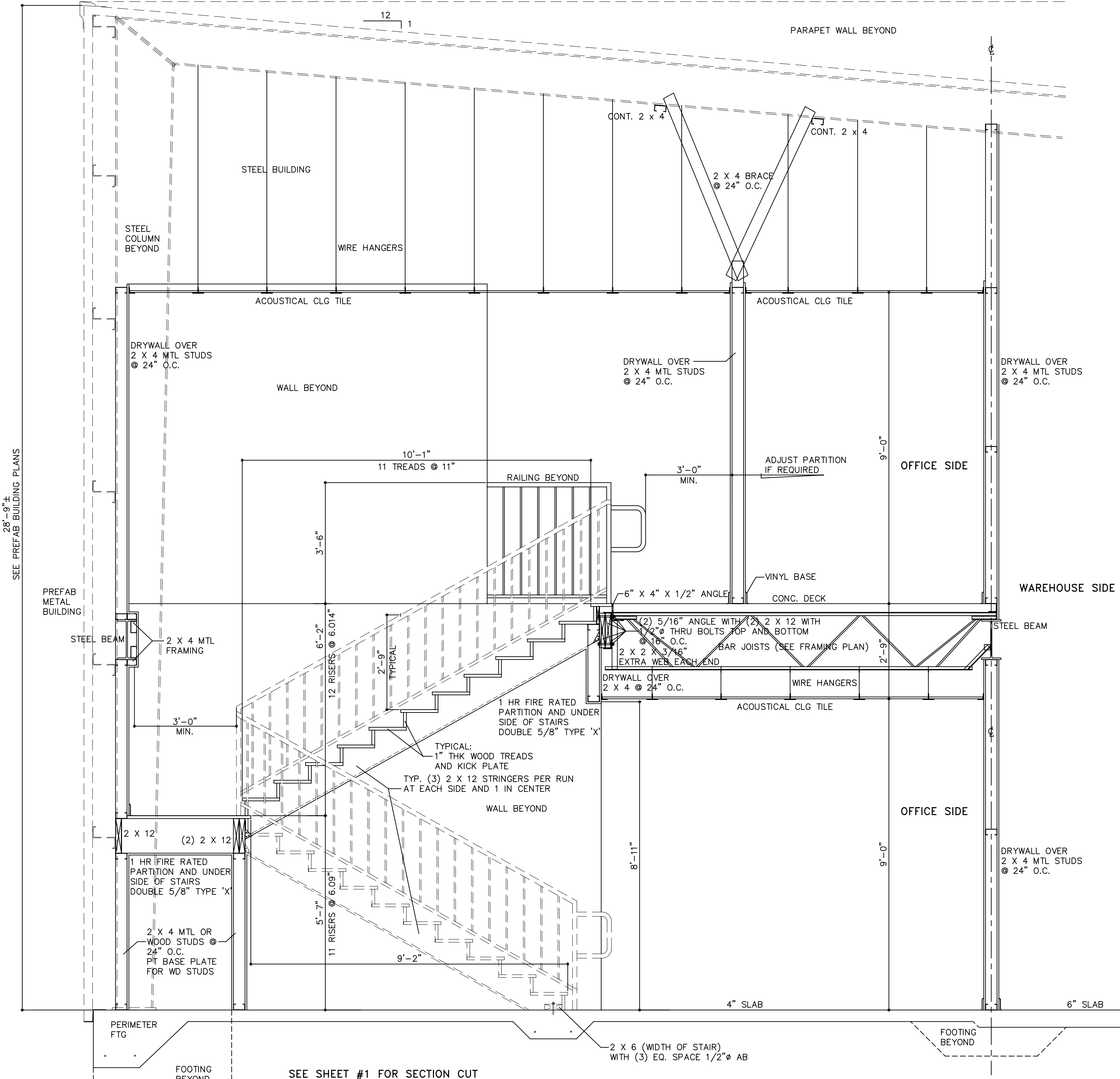


THESE PLANS ARE NOT VALID UNLESS THEY ARE SIGNED AND SEALED

Signature: _____

DRAWN	JJG
CHECKED	JJG
DATE	10/25/19
SCALE	AS SHOWN
JOB NUMBER	1804908C-Auburndale
SHEET	5
OF 8 SHEETS	

ALL CONTRACTORS AND SUB-CONTRACTORS ARE TO REVIEW THE ENTIRE SET OF PLANS INCLUDING THE GENERAL NOTES AND OTHER INFORMATION IN THESE PLANS PRIOR TO AND DURING CONSTRUCTION. USE WRITTEN DIMENSIONS ONLY - DO NOT SCALE DRAWINGS.



RAILING REQUIREMENTS

PROVIDE 42" HIGH GUARD RAIL

PROVIDE INTERMEDIATE RAILS OR PATTERNS SUCH THAT A 4" DIAMETER SPHERE CANNOT PASS THROUGH ANY OPENING

PROVIDE A CURB OR BOTTOM RAIL THAT WILL REJECT A 2" DIAMETER SPHERE

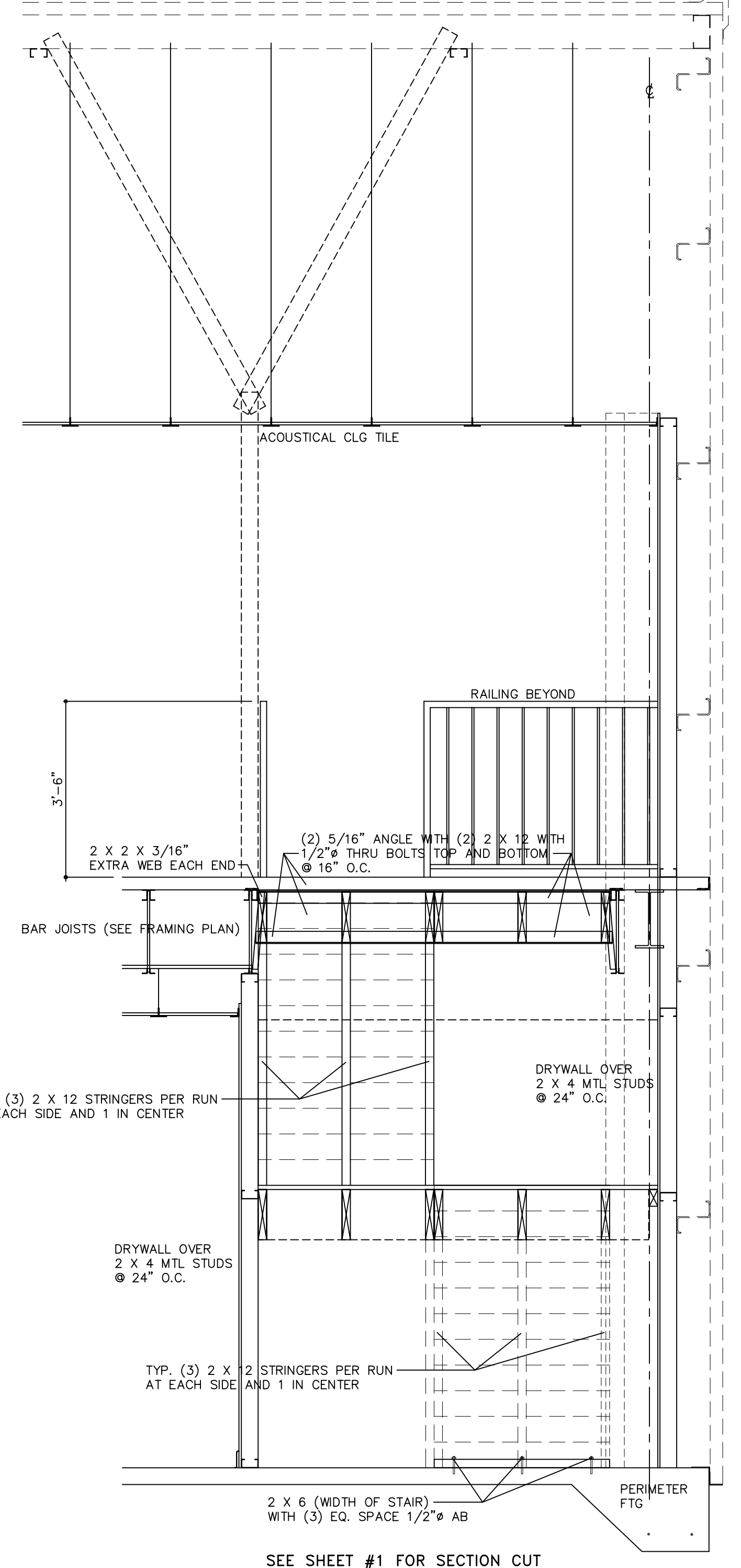
A BOTTOM RAIL OR CURB IS NOT REQUIRED ON STAIRS

A 6" SPHERE SHALL NOT PASS THROUGH THE TRIANGULAR OPENING FORMED BY A TREAD, RISER AND BOTTOM GUARD RAIL

RAILLOAD1:
HANDRAILS SHALL BE DESIGNED AND CONSTRUCTED FOR A CONCENTRATED LOAD OF 200 LB APPLIED AT ANY POINT AND IN ANY DIRECTION

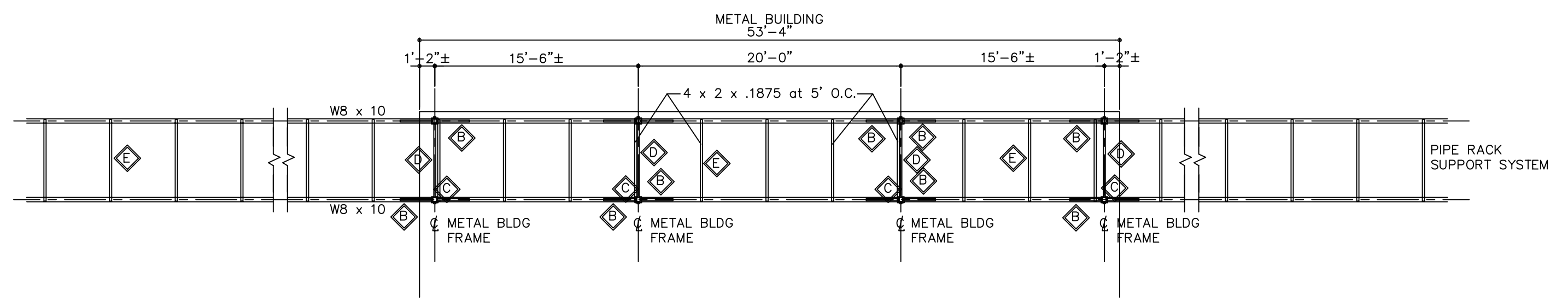
RAILLOAD2:
HANDRAILS LOCATED OTHER THAN WITHIN DWELLING UNITS SHALL ALSO BE DESIGNED AND CONSTRUCTED FOR A LOAD OF 50 PLF APPLIED IN ANY DIRECTION

LOADING CONDITIONS FOR RAILLOAD1 AND RAILLOAD2 SHALL NOT BE APPLIED SIMULTANEOUSLY, BUT EACH SHALL BE APPLIED TO PRODUCE MAXIMUM STRESS IN EACH OF THE RESPECTIVE COMPONENTS OR ANY OF THE SUPPORTING COMPONENTS



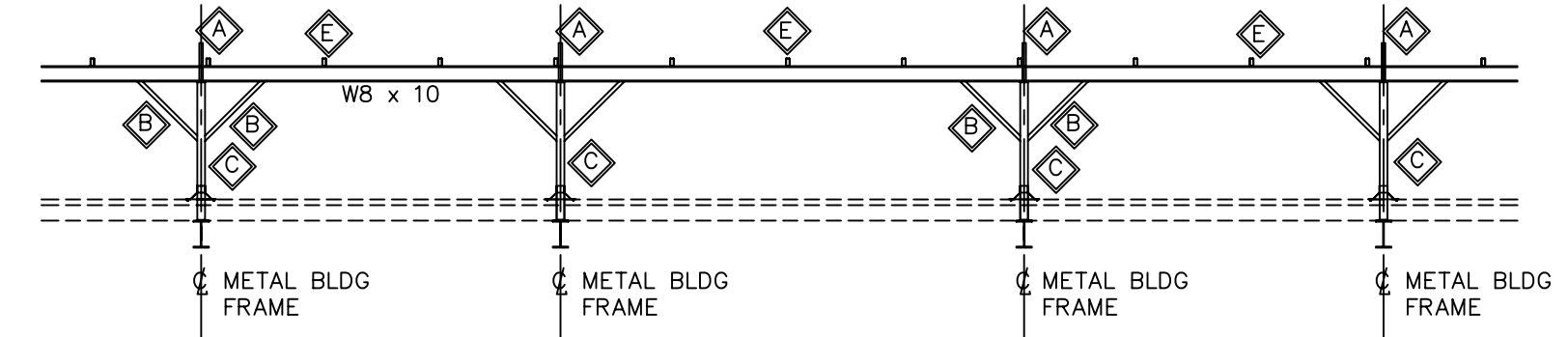
SEE SHEET #1 FOR SECTION CUT
STAIR SECTION 'STR1'
SCALE: 1/2" = 1'-0"

SEE SHEET #1 FOR SECTION CUT
STAIR SECTION 'STR2'
SCALE: 1/2" = 1'-0"

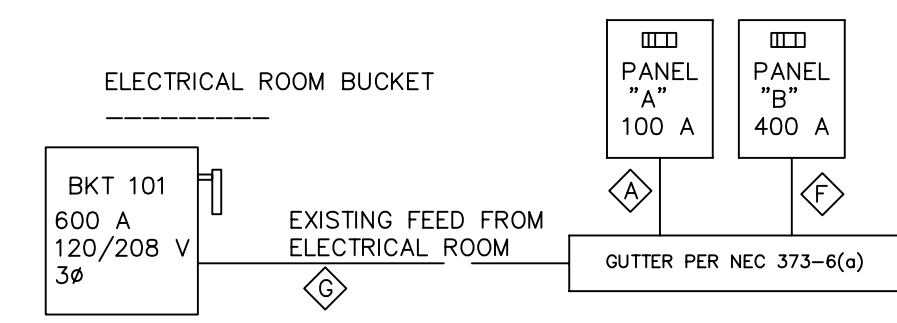


PARTIAL PLAN VIEW - ROOF MOUNTED PIPE RACK SYSTEM
SCALE: 1/8" = 1'-0"

- STEEL LEGEND**
- ⊠ 2" x 2" x 3/16" AT EACH PIPE SUPPORT
 - ⊡ 2 1/2" x 2 1/2" x 3/16" DIAG. ANGLE (SEE SECTION SHEET #3)
 - ⊜ 4"φ .237" STD PIPE COL.
 - ⊞ 2" x 2" x 3/16" DIAGONAL BRACE 45° WELDED TO WF AND 4"φ PIPE SUPPORT
 - ⊟ 4 x 2 x .1875 at 5' O.C.



PARTIAL PLAN VIEW - ROOF MOUNTED PIPE RACK SYSTEM
SCALE: 1/8" = 1'-0"



NOTE:
MIN. SHORT CKT CURRENT INTERRUPTING CAPACITY REQUIRED IS 25000 AIC

ELECTRICAL RISER DIAGRAM

- NTS
- ELECTRICAL LEGEND**
- 100 A ⊠ #3 CU THWN PER PHASE, #4 GND, IN 1 1/4"φ COND.
 - 400 A ⊡ (1) #500 CU THWN PER PHASE, #1/0 GND, #500 CU NEUTRAL, 3"φ CONDUIT EACH
 - 600 A ⊞ (2) #300 CU THWN PER PHASE, #1/0 GND, (2) #300 NEUTRAL, 3"φ CONDUIT EACH