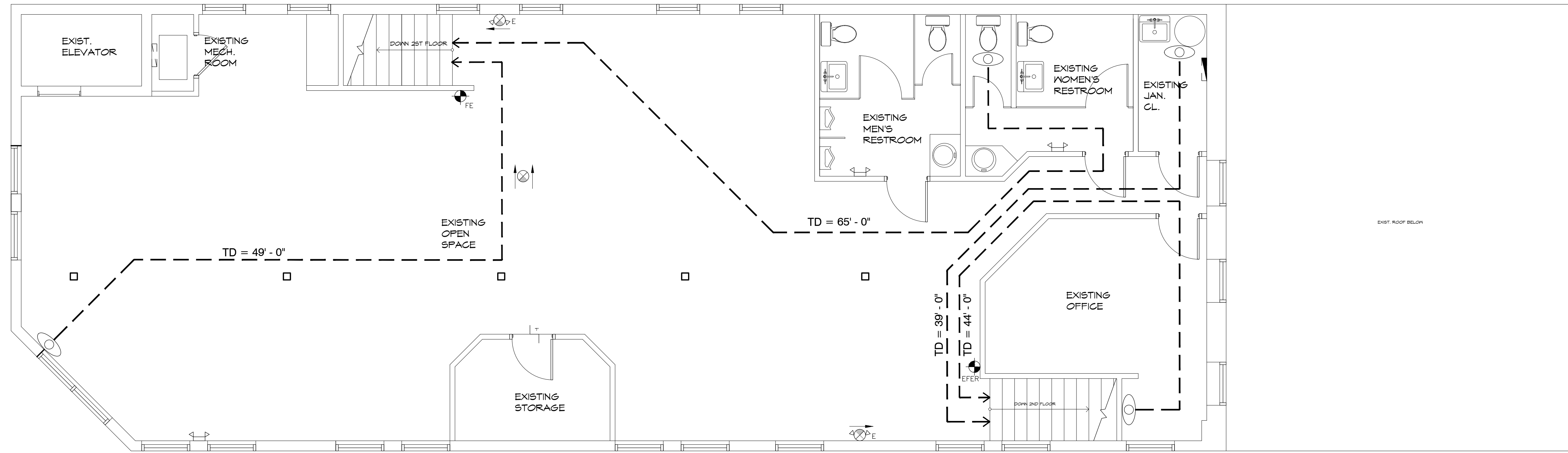


3rd TO 2nd STAIR PLAN
SCALE: 1/4" = 1'-0"



3rd FLOOR LIFE SAFETY PLAN
SCALE: 1/4" = 1'-0"

SYMBOLS LEGEND

- EXIT SIGN W/ EMERGENCY BATTERY PACK
- COMBINATION EXIT SIGN W/ EMERGENCY LIGHT BATTERY PACK
- FIRE EXTINGUISHER CLASS "2A-10BC" RATING FIRE EXTINGUISHER (TYP. BY G.O.) COORDINATE EXACT LOCATION W/ LOCAL FIRE OFFICIALS.
- EMERGENCY LIGHT W/ BATTERY PACK
- DIRECTIONAL EXIT SIGN W/ EMERGENCY LIGHT BATTERY PACK
- EXISTING COMBINATION EXIT SIGN W/ EMERGENCY LIGHT BATTERY PACK
- EXISTING FIRE EXTINGUISHER RELOCATED
- EXISTING EMERGENCY LIGHT W/ BATTERY PACK RELOCATED

EXIT CAPACITY

← CAPACITY OF EXIT
← OCCUPANT LOAD

TRAVEL DISTANCE

← TRAVEL DISTANCE (TD)
← DIRECTION OF TRAVEL

INDICATES DISTANCE OF TRAVEL FROM MOST REMOTE LOCATION WITHIN A ROOM OR SPACE TO AN EXIT.

SECONDARY OCCUPANCY (FBC CHAPTER 9):
ASSEMBLY - GROUP - B

SQ. FT. DATA

USE	AREA	AREA / PERSON	POPULATION
FUTURE BUSINESS SPACE	1,900 SF	100 GROSS	19 PERSONS
BLDG. TOTAL	1,900 SF	-	19 PERSONS

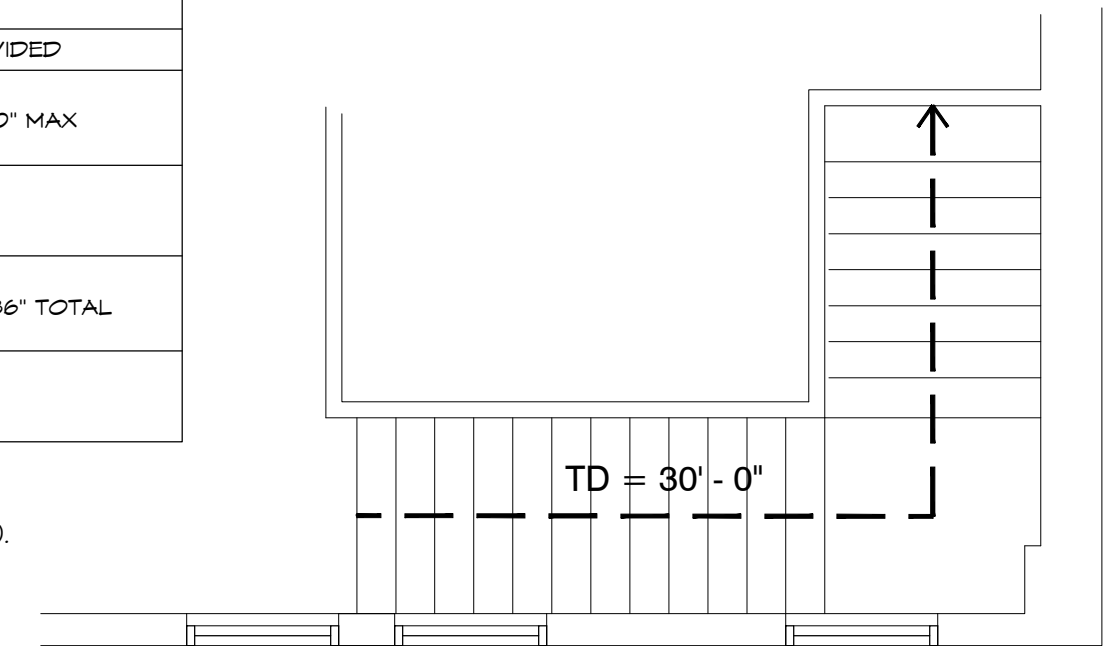
ASSEMBLY OCCUPANCY
MINIMUM NUMBER OF PLUMBING FACILITIES (FBC TABLE P403.1)
19 PERSONS = 10 MEN & 9 WOMEN

OCCUPANCY	WATER CLOSETS		LAVS		DRINKING FOUNTAINS	SERVICE SINKS
	M	F	M	F		
REQUIRED:	1-25 = 1 EACH	1-40 = 1 EACH	-	-	-	1
PROVIDED:	4	2	2	2	-	1

MEANS OF EGRESS (FBC CHAPTER 10)

OCCUPANCY CLASSIFICATION	SPRINKLERED	
	REQUIRED	PROVIDED
BUSINESS		
MAXIMUM TRAVEL DISTANCE (TABLE 1017.2)	300 FT	131'-0" MAX
TOTAL # OF EXITS PER TENANT (SECTION 1006)	2 REQUIRED	2
EGRESS WIDTH PER PERSON (LEVEL) (TABLE 1009.3.2)	0.2 FACTOR 49 x (0.2) = 9.8	2 @ 36" TOTAL
MINIMUM CLEAR OPENING OF EXIT DOORS (TABLE 1010.1.1)	32"	36"

MINIMUM NUMBER OF EXITS (FBC CHAPTER 1006.3.1)
OCCUPANT LOAD 1-500, MINIMUM # OF EXITS SHALL BE (2).



3rd TO 2nd STAIR PLAN
SCALE: 1/4" = 1'-0"

architecture studio
great design shapes the future

1823 east fort king street, suite 102, ocala, florida, 34471
p:(352) 620-0944 f:(352) 620-0996 www.sosarchitect.com
florida license: aa26002579 sosa@sosarchitect.com

copyright © 2019
ALL RIGHTS RESERVED. THESE PLANS ARE PROTECTED BY COPYRIGHT LAW. ANY REUSE WITHOUT PERMISSION WILL RESULT IN LEGAL ACTION.

A NEW (Renovation) FOR:
LODGE EXPANSION
36 S. MAGNOLIA AVENUE
OCALA, FLORIDA

project no.
1957

by SG date
12.23.19

sheet no.

LSP200

