

PROJECT LOCATION:
1443 WEST AV. MIAMI BEACH, FL 33139

SCOPE OF WORK
CHANGE OF USE
ALTERATION LEVEL II
- CHANGE OF USE FROM APARTMENTS TO 10 HOTEL SUITES. - ENLARGE EXIST. LANDING AREA TO ACCOMMODATE ADA ACCESSIBILITY.
APPLICABLE CODES
JURISDICTION: MIAMI BEACH, FL. - 2014 EXISTING FLORIDA BUILDING CODE. - 2014 FLORIDA BUILDING CODE PLUMBING. - FLORIDA FIRE PREVENTION CODE 5TH EDITION. - 2011 NATIONAL ELECTRICAL CODE
NOTES
- NO MECHANICAL WORK TO BE PERFORMED. - NO WORK TO BE PERFORMED ON SECOND FLOOR; TO REMAIN AS IT IS. - ALL SMOKE DETECTORS SHALL BE INTERCONNECTED; NO SPRINKLER BUILDING. - FIRE ALARM UNDER SEPARATE PERMIT.

LEGEND	
ELECTRICAL PANEL	
OUTLET	
DUPLEX OUTLET GFI.	
HEATER	
SMOKE DETECTOR	
FIRE EXTINGUISHER	
WALL MOUNTED EMERGENCY LIGHTS	
HORN / STROBE LIGHT	

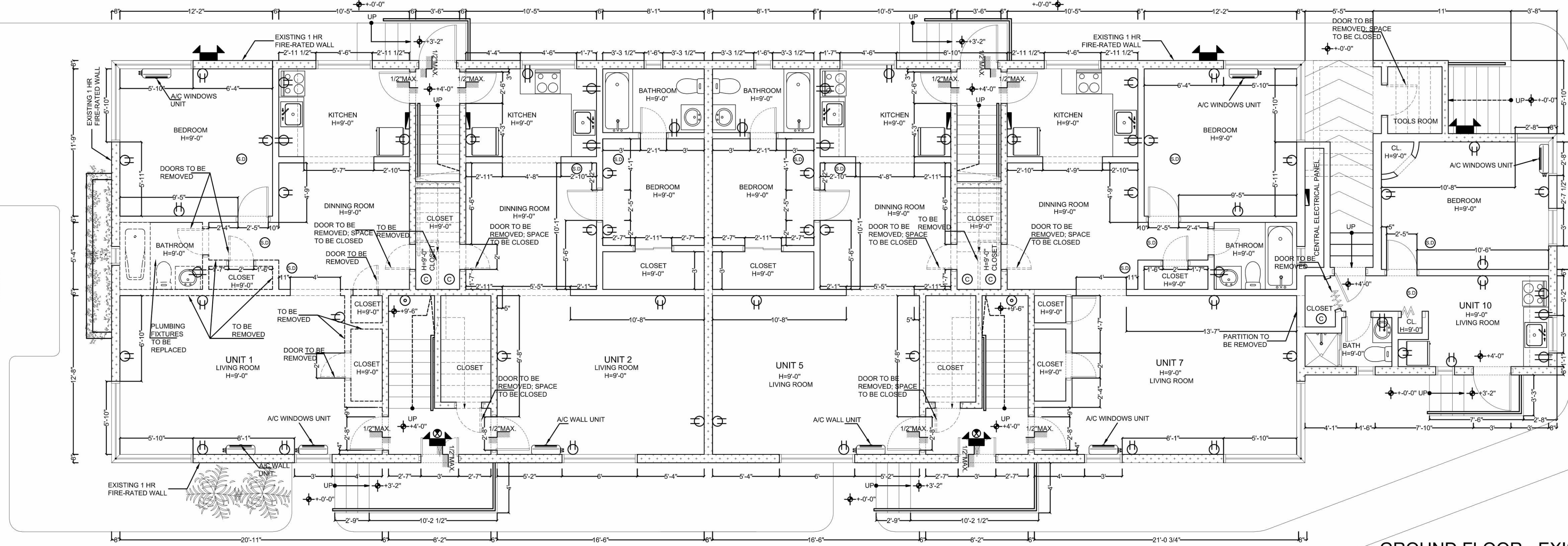
LEGEND	
	EXIST. 1HR FIRE RATED WALL
	EXIST. INTERIOR WALL
	EXIST. TO BE REMOVED
	NEW WALL

UNITS AREA INFORMATION	
UNIT NO.	TOTAL SQ.FT.
UNIT 1	615.00 SQ.FT.
UNIT 2	551.33 SQ.FT.
UNIT 3	681.29 SQ.FT.
UNIT 4	551.33 SQ.FT.
UNIT 5	551.33 SQ.FT.
UNIT 6	551.33 SQ.FT.
UNIT 7	405.88 SQ.FT.
UNIT 8	525.14 SQ.FT.
UNIT 9	405.88 SQ.FT.
UNIT 10	549.49 SQ.FT.
AVERAGE UNIT SIZE: 539.00 SQ.FT.	

DOOR SCHEDULE - NEW DOORS

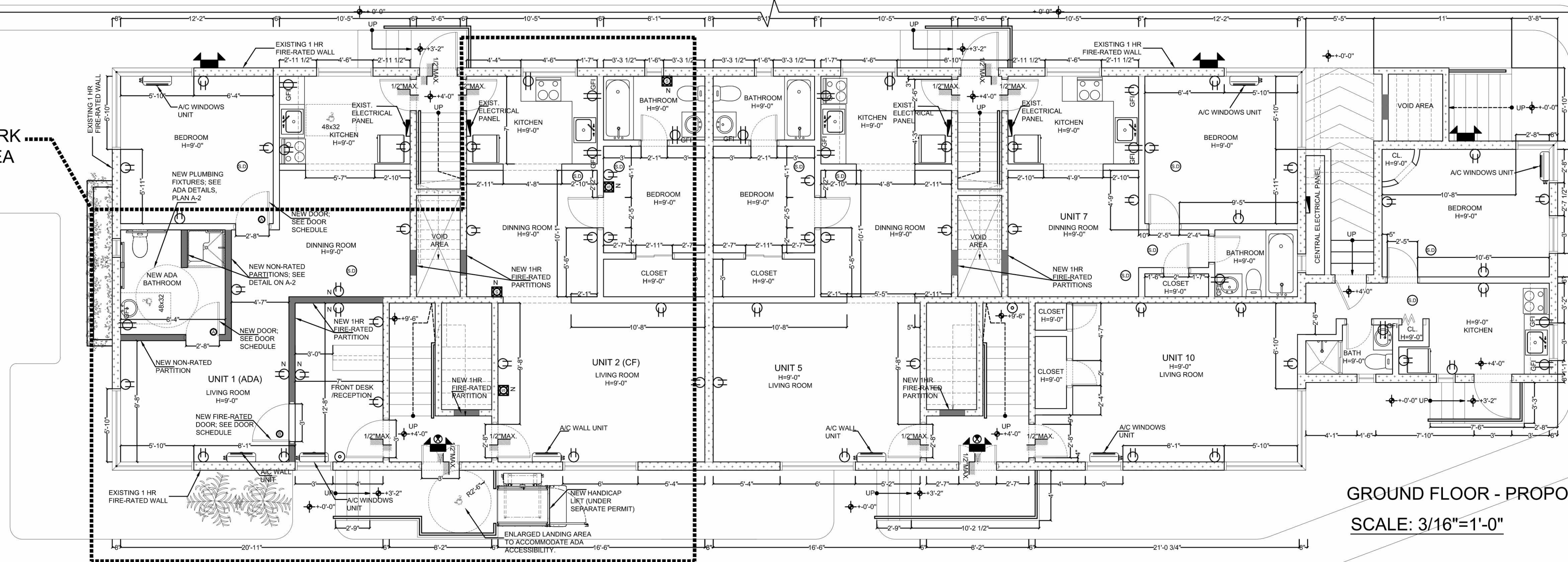
MARK	QUANT.	DIMENSIONS			MANUF.	TYPE	REMARKS	MATERIAL	RATING	N.O.A.
		W	H	THICK.						
(A)	2 (NEW)	32"	82"	1 3/8"	N/A	INTERIOR	SWING / SELF CLOSING - LATCH	HOLLOW CORE WOOD	NON-RATED	N/A
(B)	1 (NEW)	36"	82"	1 3/8"	N/A	INTERIOR	SWING / SELF CLOSING - LATCH	SOLID CORE WOOD	1HR	N/A

*TOTAL WALL DEMOLITION= 132 SF



GROUND FLOOR - EXISTING FLOOR PLAN

SCALE: 3/16"=1'-0"



GROUND FLOOR - PROPOSED FLOOR PLAN

SCALE: 3/16"=1'-0"

PROJECT NAME
WEST AVENUE DECO
APARTMENTS LLC
1443 WEST AV. MIAMI BEACH, FL
33139

BY: MB

SCALE: AS SHOWN

REVISIONS

SHEET NAME

GROUND FLOOR
EXISTING &
PROPOSED
FLOOR PLANS

SHEET NUMBER

A1