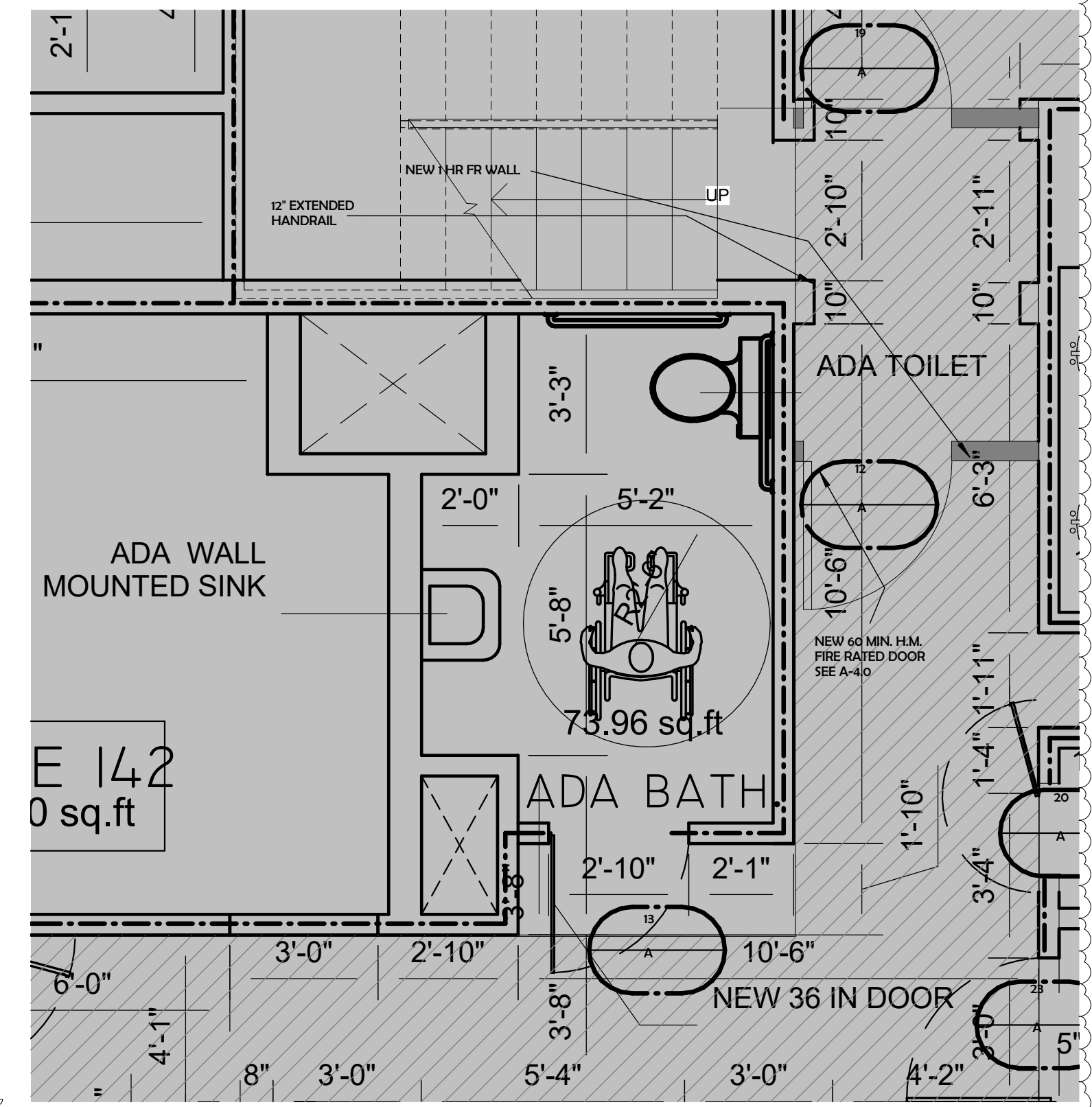
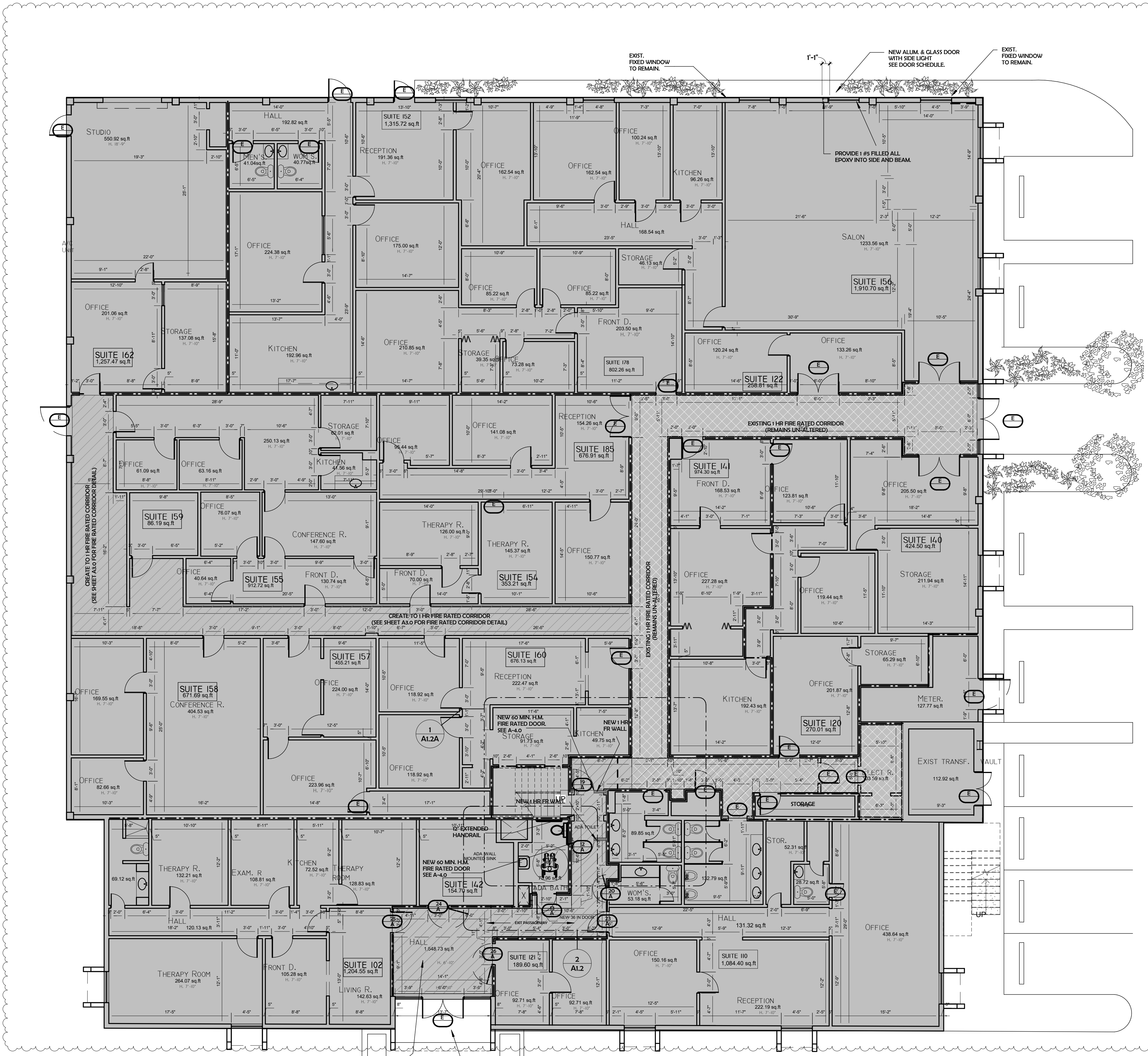


BLDG. SQ. FOOTAGE	
1ST FLOOR	16,806.68 SQ. FT.
2ND FLOOR	3,928.30 SQ. FT.
TOTAL BLDG. SQ. FT	= 20,734.98 SQ. FT.

PLAN LEGEND	
	EXISTING GWB PARTITION
	EXISTING 1 HOUR TO BE VERIFY IN FIELD
	NEW TRANSFORMED GWB PARTITION INTO 1 HOUR FIRE RATED-SEE WALL TYPES
	EXISTING WALLS TO BE LEGALIZED. WALLS SHALL EXTENDED ABOVE NEW FIRE RATED CEILING ASSEMBLY TO ACHIEVE A 1 HOUR FIRE RATED CORRIDOR
	EXISTING ACOUSTICAL CEILING. CONVERT INTO NEW 1 HR FR GRID.
	DOOR NUMBER
	WALL TYPE
*SEE DOOR SCHEDULE ON A 4.0	

ENCLOSURE AND PROTECTION OF STAIRS

7.2.2.5 ENCLOSURE AND PROTECTION OF STAIRS.
7.2.2.5.1 ENCLOSURES.
7.2.2.5.1.1 ALL STAIRS SERVING AS AN EXIT OR EXIT COMPONENT SHALL BE ENCLOSED IN ACCORDANCE WITH 7.1.3.2.
7.2.2.5.1.2 INSIDE STAIRS OTHER THAN THOSE SERVING AS AN EXIT OR EXIT COMPONENT, SHALL BE PROTECTED IN ACCORDANCE WITH SECTION 6.6.
7.2.2.5.1.3 IN EXISTING BUILDINGS, WHERE A TWO-STORY EXIT ENCLOSURE CONNECTS THE STORY OF EXIT DISCHARGE WITH AN ADJACENT STORY, THE EXIT SHALL BE PERMITTED TO BE ENCLOSED ONLY ON THE STORY OF EXIT DISCHARGE, PROVIDED THAT NOT LESS THAN 50 PERCENT OF THE NUMBER AND CAPACITY OF EXITS ON THE STORY OF EXIT DISCHARGE ARE INDEPENDENT OF SUCH ENCLOSURES.



2 ENLARGED ADA BATHROOM- Callout
3/8" = 1'-0"

LIFE SAFETY MODIFICATIONS FOR:
EXECUTIVE OFFICES-MIAMI LAKES
6000 NW 153RD ST.
MIAMI LAKES, FL 33014

- REVIEW SET
- PRELIMINARY
- NOT FOR CONSTRUCTION
- DRY RUN PERMIT SET
- PERMIT SET
- BID SET
- CONSTRUCTION SET

SUBMITTAL DATE: 06-03-2014

DRAWN BY:
Author
CHECKED BY:
ARI SKLAR

PROPOSED GROUND FLOOR PLAN

A1.2

PROJECT #: 14-023

DATE: 09-14-2015